

**155**  
**Fall Bred**  
**Heifer**

**MISS BLACKBIRD ELLSTON G411**

Reg. 16341332 Tattoo: L/R G411 8-17-2008

S A F Connection #  
**SYDGEN C C & 7**  
SydGen Forever Lady 4087

S A Neutron 377 #  
**MISS BLACKBIRD ELLSTON A528**  
Miss Blackbird Ellston K599

SVF Gdar 216 LTD #  
S A F Royal Queen 5084  
SydGen 1407 Corona 2016  
S A F Forever Lady 8292  
S A F Neutron #  
S A Queen Susan 102 #  
H&K Brutus F15  
Miss Blackbird Ellston G10

BW	+2.2
WW	+51 20%
Milk	+21
YW	+91 25%

BW	Adj. 205/WR	Adj. 365/YR	% IMF/Ratio	Adj. RE/Ratio	Rib Fat/Ratio	Rump Fat/Ratio
70	653/103	914/98	4.69/90	11.8/107	.26/87	.31/79
CW	+22 5%	Marb. +.31	RE +.57 15%	FAT +.007		
SW	+26.82 30%	\$F +29.77 30%	\$G +26.14 30%	\$B +54.27 15%		
Scr.	+.85 20%	CEM +4	CEM +7	SEN -.24		
Dam's Production:		BWR 5-101	WWR 5-99	YWR 4-101		
Sons @ Auction: None		Daughters @ Auction: 2-\$1675		Daughters In Herd: 1-116		
Est. Calf EPDs	BW +.8 20%	WW +54 10%	Milk +23	YW +99 10%		
Carcass	Marb. +.35	RE +.39 15%	Fat +.018	\$B +52.99 15%		

- ★ Pasture exposed to Connealy Reward from 11-5-09 on. Ultrasound safe to Reward, due approximately September 10, 2010
- ★ G411 scanned the 2nd biggest ribeye of the fall bred heifers selling.
- ★ A maternal sister to G411 works as the 7th high indexing cow of the Hoover herd with 2-116 WR! Her first son was the 2nd heaviest bull calf of the fall 2007 crop at 848 lbs.
- ★ Dam A528 also produced a feature daughter in our 2008 sale to Darren Martin. She was the 6th heaviest weaning weight heifer calf of her crop.
- ★ Although legal for registry, G411 has some white on her underline in her flank.

**156**  
**Fall Bred**  
**Heifer**

**PRIM LASSIE OF ELLSTON G409**

Reg. 16341330 Tattoo: L/R G409 8-15-2008

S A F Connection #  
**SYDGEN C C & 7**  
SydGen Forever Lady 4087

S A V Fame 9312  
**PRIM LASSIE OF ELLSTON A534**  
Prim Lassie of Ellston X309

SVF Gdar 216 LTD #  
S A F Royal Queen 5084  
SydGen 1407 Corona 2016  
S A F Forever Lady 8292  
S A F Fame #  
S A V Juana 6232  
H&K Neutron T137  
Prim Lassie of Ellston T238

BW	+2.3
WW	+41
Milk	+22
YW	+88 30%

BW	Adj. 205/WR	Adj. 365/YR	% IMF/Ratio	Adj. RE/Ratio	Rib Fat/Ratio	Rump Fat/Ratio
68	516/82	882/95	5.67/108	11.0/100	.21/70	.36/92
CW	+13	Marb. +.39	RE +.45 10%	FAT +.012		
SW	+20.65	\$F +30.64 25%	\$G +28.56 25%	\$B +50.58 20%		
Scr.	+1.02 10%	CEM +6	CEM +9 15%	SEN -.23		
Dam's Production:		BWR 5-97	WWR 5-97	YWR 3-101		
Sons @ Auction: 1-\$2100		Daughters @ Auction: None		Daughters In Herd: 1-115		
Grandam's Production:		Sons @ Auction: 1-\$3700		Daughters @ Auction: None		
BWR 7-98		WWR 7-101		YWR 4-102		
Est. Calf EPDs	BW +.8 20%	WW +49 30%	Milk +24 25%	YW +97 10%		
Carcass	Marb. +.39	RE +.33 25%	Fat +.021	\$B +51.14 20%		

- ★ A.I. to Connealy Reward 11-17-09. Pasture exposed to same bull from 11-18-09 on. Ultrasound safe to Reward, due approximately August 26, 2010.
- ★ An exceptionally deep ribbed heifer that should make a great cow. She will be a buy of a lifetime! Her first calf by Reward should be a great combination.
- ★ Dam A534 is a moderate framed Fame daughter with literally a perfect udder—great udder shape and a small teat size.
- ★ A534's only daughter in the herd ties as the 13th top indexing cow of the Hoover herd with 2-115 WR. Her first two sons have been photo features, see lot 94. This is the type of cow potential G409 has in your herd.
- ★ Grandam X309 produced lot 144 feature bred heifer.
- ★ Great grandam T238 is a sweetie cow that records 8-100 BWR and 8-110 WR.
- ★ One of my highest recommended heifers with a lot of potential as a momma cow!

*David and Joy were eating dinner and discussing the below zero temperatures that day when David inadvertently creates a new word. He meant to say terrible or horrendous, but it came out "terrendous"!*



**Queenmere of Ellston D496**  
Full sister to lot 157

**157**  
**Fall Bred**  
**Heifer**

**QUEENMERE ELLSTON G429**

Reg. 16341339 Tattoo: L/R G429 8-22-2008

G A R Grid Maker #  
**TC GRIDIRON 258**  
TC Blackbird 7049 #

S A Neutron 377 #  
**QUEENMERE ELLSTON A508 #**  
Queenmere Ellston X297

G D A R Traveler 044 #  
G A R Precision 2536  
T C Dividend 494 #  
O C C Blackbird 902D  
S A F Neutron #  
S A Queen Susan 102 #  
H&K Black Fix S104  
Queenmere Ellston T308

BW	+3.4
WW	+59 3%
Milk	+16
YW	+102 5%

BW	Adj. 205/WR	Adj. 365/YR	% IMF/Ratio	Adj. RE/Ratio	Rib Fat/Ratio	Rump Fat/Ratio
73	747/118	1003/107	4.25/81	11.4/104	.30/100	.35/90
CW	+17 25%	Marb. +.16	RE +.38 15%	FAT +.005		
SW	+25.43	\$F +37.78 10%	\$G +19.03	\$B +45.66		
Scr.	+.75 25%	CEM +3	CEM +9 15%	SEN +1.20		
Dam's Production:		BWR 5-103	WWR 5-108	YWR 4-104		
Sons @ Auction: 1-\$2300		Daughters @ Auction: 1-\$1600		Daughters In Herd: 1-91		
Est. Calf EPDs	BW +1.4 30%	WW +58 4%	Milk +21	YW +104 4%		
Carcass	Marb. +.27	RE +.29 30%	Fat +.019	\$B +48.68 25%		

- ★ A.I. to SydGen CC&7 11-16-09. Pasture exposed to Connealy Reward from 11-30-09 on. Estimated calf EPDs are for a Reward calf.
- ★ G429 was the 4th heaviest weaning weight heifer of the fall 2008 crop! This surged her WW EPD to the top 3% of the breed. She will definitely add more frame and growth to her progeny.
- ★ G429's full sister pictured above was the 5th heaviest WW heifer calf of her crop.
- ★ Dam A508 is a cow that does well no matter what bull she is mated to.
- ★ Grandam X297 works in the Express Ranch herd in Oklahoma.
- ★ Maternal great grandsire S104 has progeny in 13 herds and daughters in 11 herds ratioing 100 on their progeny.
- ★ Although legal for registry, G429 has some white on her navel.
- ★ Eight Pathfinders are represented in G429's pedigree.

**158**  
**Fall Bred**  
**Heifer**

**ERICA OF ELLSTON G406**

Reg. 16341327 Tattoo: L/R G406 8-13-2008

S A F Connection #  
**SYDGEN C C & 7**  
SydGen Forever Lady 4087

Hilltops Focus 56L  
**ERICA OF ELLSTON A652 #**  
Erica of Ellston N207

SVF Gdar 216 LTD #  
S A F Royal Queen 5084  
SydGen 1407 Corona 2016  
S A F Forever Lady 8292  
S A F Focus of E R #  
Hilltops Miss Bando 12  
S A V Dark Star 1076  
Erica of Thymac X20

BW	+2.4
WW	+57 5%
Milk	+18
YW	+96 15%

BW	Adj. 205/WR	Adj. 365/YR	% IMF/Ratio	Adj. RE/Ratio	Rib Fat/Ratio	Rump Fat/Ratio
71	646/102	961/103	5.10/98	9.9/90	.28/93	.40/103
CW	+14	Marb. +.27	RE +.19	FAT -.002 25%		
SW	+28.23 20%	\$F +32.45 20%	\$G +22.47	\$B +45.60		
Scr.	+.48	CEM +5	CEM +9 15%	SEN +.88		
Dam's Production:		BWR 5-94	WWR 5-104	YWR 5-102		
Sons @ Auction: 3-\$3650		Daughters @ Auction: None		Daughters In Herd: 1-93		
Est. Calf EPDs	BW +.9 20%	WW +57 5%	Milk +22	YW +101 5%		
Carcass	Marb. +.33	RE +.20	Fat +.014	\$B +48.65 25%		

- ★ A.I. to Connealy Reward 11-13-09. Pasture exposed to same bull from 11-14-09 on. Ultrasound safe to Reward, due approximately August 22, 2010.
- ★ One of the nicest CC&7 heifers here with an extra rib of length. You will like her!
- ★ Dam is a Pathfinder cow whose calves are born light, yet come in heavy at weaning. All three sons have come to auction selling for \$3200-4000 to Mark Holt, Butch Miller, and Nick Bence.
- ★ I was working on footnotes in the washroom, and I tried to solicit some footnote ideas. Jessi pipes up and says, "Her mom is black, her dad is black. . ."



**FALL BRED HEIFERS**



**159**  
**Fall Bred**  
**Heifer**

**MISS ERICA ELLSTON G498**

Reg. 16341334 Tattoo: L/R G498 9-05-2008

S A F Connection #  
**SYDGEN C C & 7**  
SydGen Forever Lady 4087

Bon View Paragon 714 #

**MISS ERICA ELLSTON T170**  
Miss Erica Thymac C22

S V F Gdar 216 LTD #  
S A F Royal Queen 5084  
SydGen 1407 Corona 2016  
S A F Forever Lady 8292  
Bon View Paragon 1190 #  
Bon View Gammer 2070 #  
Leos C J Brutus 4092  
Miss Erica Thymac F129

BW	+1.8
WW	+41
Milk	+22
YW	+73

BW	Adj. 205/WR	Adj. 365/YR	% IMF/Ratio	Adj. RE/Ratio	Rib Fat/Ratio	Rump Fat/Ratio
68	573/91	861/92	5.92/113	10.8/98	.28/93	.36/92
CW +5	Marb. +.41	RE +.23	FAT -.002	25%		
SW +26.14	\$F +16.13	\$G +29.53	20%	SB +41.69		
Scr. +.51	CED +4	CEM +7	SEN +4.24			
Dam's Production:	BWR 9-100	WWR 9-101	YWWR 7-98			
Sons @ Auction:	1-\$2400	Daughters @ Auction:	4-\$1375	Daughters In Herd:	None	
Est. Calf EPDs	BW +.6 15%	WW +49 30%	Milk +24 25%	YW +90 25%		
Carcass	Marb. +.40	RE +.22	Fat +.014	SB +46.70	30%	

- ★ Pasture exposed to Connealy Reward from 11-5-09 on. Ultrasound safe to Reward, due approximately August 27, 2010.
- ★ A CC&7 heifer bred to Reward—what a perfect combination! Reward is a bull that isn't afraid to breed a female, but once he gets her bred, he moves on. It was a pleasure to watch Reward this summer with his first group of cows.
- ★ Dam T170 is an older cow with lower EPDs, but that certainly doesn't hurt her performance, nor will it hurt G498's.
- ★ Sons and daughters of T170 work in five states: Iowa, Missouri, Nebraska, South Dakota, and Illinois in the herds of John Allen, Thomas & Catherine Craig, RR Cattle Co., Doug Niemann, Nathan Palm, and Maas Angus Farm.



**BLACKBIRD OF ELLSTON G423 – Lot 161**

**161**  
**Fall Bred**  
**Heifer**

**BLACKBIRD OF ELLSTON G423**

Reg. 16341335 Tattoo: L/R G423 8-19-2008

S A F Connection #  
**SYDGEN C C & 7**  
SydGen Forever Lady 4087

R F Partners Ambush 38C6  
**BLACKBIRD OF ELLSTON T257 #**  
Blackbird of Ellston R247 #

S V F Gdar 216 LTD #  
S A F Royal Queen 5084  
SydGen 1407 Corona 2016  
S A F Forever Lady 8292  
Paramont Ambush 2172 #  
Basin Chloe 938C  
Steele Hi Flyer C12  
Blackbird of Thymac V164

BW	+2.5
WW	+49 30%
Milk	+25 20%
YW	+86

BW	Adj. 205/WR	Adj. 365/YR	% IMF/Ratio	Adj. RE/Ratio	Rib Fat/Ratio	Rump Fat/Ratio
73	680/108	954/102	5.41/103	11.6/105	.26/87	.38/97
CW +11	Marb. +.30	RE +.28	30%	FAT +.002	30%	
SW +27.15	\$F +25.60	\$G +24.81		SB +44.17		
Scr. +.69	30%	CED +3	CEM +5	SEN -2.38		
Dam's Production:	BWR 8-104	WWR 8-108	YWWR 7-103			
Sons @ Auction:	3-\$2850	Daughters @ Auction:	None	Daughters In Herd:	2-103	
Grandam's Production:	Sons @ Auction:	2-\$2500	Daughters @ Auction:	2-\$3125		
	BWR 8-101	WWR 8-104	YWWR 7-104			
Est. Calf EPDs	BW +.9 20%	WW +53 15%	Milk +25 20%	YW +96 15%		
Carcass	Marb. +.34	RE +.24	Fat +.016	SB +47.94	30%	

- ★ Pasture exposed to Connealy Reward from 11-5-09 on.
- ★ You've been told not to judge a book by its cover, and don't judge this heifer by her picture. . . you will like her much better in person!
- ★ She has great performance figures as well as a very solid ultrasound scan. A hard-to-fault heifer!
- ★ Pathfinder dam T257 is a cow that can be counted on for a good calf every year. One daughter in the herd has achieved Pathfinder status, one daughter was the 8th heaviest weaning weight heifer calf of her crop.
- ★ Grandam R247 is also a Pathfinder with a 360 day calving interval.
- ★ Great grandam V164 has 5 Pathfinder daughters, granddaughters, or great granddaughters working in the Hoover herd.

**160**  
**Fall Bred**  
**Heifer**

**BLKCP EMPRESS ELLSTON G500**

Reg. 16341422 Tattoo: L/R G500 10-03-2008

Sitz Greatplains 9520  
**WOODHILL STATESMAN 54K-90N**  
Woodhill Lucy 666-54K

Roth Famous 1006 #

**BLKCP EMPRESS ELLSTON B327**  
Blkcp Empress Ellston V127 #

O C C Great Plains 943G #  
Sitz Pride 3038  
Connealy Frontline #  
V D A R Lucy 666  
Famous 7001 #  
Roth Formera 9199  
S A Neutron 377 #  
Blkcp Empress Ellston M127

BW	-.1 10%
WW	+47
Milk	+22
YW	+85

BW	Adj. 205/WR	Adj. 365/YR	% IMF/Ratio	Adj. RE/Ratio	Rib Fat/Ratio	Rump Fat/Ratio
55	504/80	842/90	5.95/114	10.2/93	.23/77	.24/62
CW +7	Marb. +.44	RE +.18	FAT +.021			
SW +29.76	10%	\$F +25.38	\$G +27.12	30%	SB +42.99	
Scr. +.85	20%	CED +11	4%	CEM +11	2%	SEN +1.36
Dam's Production:	BWR 4-89	WWR 4-90	YWWR 4-97			
Sons @ Auction:	None	Daughters @ Auction:	1-\$1200	Daughters In Herd:	1-107	
Grandam's Production:	Sons @ Auction:	2-\$4250	Daughters @ Auction:	None		
	BWR 9-103	WWR 9-109	YWWR 6-110			
Est. Calf EPDs	BW -.4 5%	WW +52 15%	Milk +24 25%	YW +96 15%		
Carcass	Marb. +.41	RE +.19	Fat +.025	SB +47.35	30%	

- ★ Pasture exposed to Connealy Reward from 11-5-09 on. Observed 11-12-09. Ultrasound safe with TWINS due approximately August 21, 2010, however twins tend to come early. No guarantee of two live calves, but scan day we saw two fetuses.
- ★ Charlie (who goes with John and the feed wagon each day) thinks this is the best fall heifer. She will make a moderate framed cow. She scanned nearly 1.2" of ribeye per hundred pounds of scan weight!
- ★ Dam B327 weaned at 742 lbs., WR 117, YW 1123 lbs., YR 119. She maintains a 355 day calving interval.
- ★ A full sister to B327 has earned the Pathfinder honor.
- ★ Grandam V127 is an extremely easy fleshing cow. Her 2009 son was the 14th heaviest bull calf of the crop and sells as lot 56. Her son the year before was a top-notch CC&7 son purchased by Dennis Faust. Dennis comes to the farm prior to the sale with a list of the bulls and dams he wants to see. He evaluates every dam on his list before making his selections. We appreciate the time he takes to make the best buying decision possible. We encourage everyone to come see the cattle prior to the sale—they are easier to see on the farm, and we can show you dams, grandams, sisters, herd sires, etc.

**How It All Unfolded, Part II**

The Angus breed has now been faced with a second genetic defect—Neuropathic Hydrocephalus (NH). This came within less than a year after Arthrogyrosis Multiplex (AM) was discovered. Like AM, NH is a simple recessive genetic factor. Pessimists say genetic defects are "ruining the Angus breed". Common sense tells us otherwise. First of all, every breed of cattle, every race of humans, and every species of animals have genetic defects. We have all heard of muscular dystrophy, cystic fibrosis, or color blindness, all of which are genetic disorders in humans. We are incredibly lucky in the Angus breed to have the widest genetic diversity of any breed in the world, and pedigrees that document this fact.

If we turned back the clock of scientific advancement 50 years when we did not have a test for such genetic factors, we could have reason for concern. However, we are able to use science to definitively test for AM and NH, and make sound breeding decisions in both the purebred and commercial segments of the industry. Thus, having knowledge of such genetic factors and taking advantage of the science to test animals lets us strengthen the Angus breed. . . not ruin it.

Due to constricting horizontal space in our catalog on the pedigrees, we did not list AMF, NHF, etc. designations. *However, our entire offering has been tested free of AM and NH, or has no pedigree risk.* All of our current herd sires have been tested for both AM and NH. SAV New Design 3105 is a carrier of NH, all other herd sires have been tested free of AM and NH.

Visit the Education Center at [www.hooverangus.com](http://www.hooverangus.com) for an NH Q&A.



**FALL BRED HEIFERS**



**162**  
**Fall Bred**  
**Heifer**

**BLACKCAP OF ELLSTON G410**

Reg. 16341331 Tattoo: L/R G410 8-17-2008

S A F Connection #  
**SYDGEN C C & 7**  
SydGen Forever Lady 4087

SVF Gdar 216 LTD #  
S A F Royal Queen 5084  
SydGen 1407 Corona 2016  
S A F Forever Lady 8292  
G A R Grid Maker #  
TC Blackbird 7049 #  
Bon View Paragon 2121 #  
Miss Thymac Alyne Z172

BW	+2.6
WW	+56 5%
Milk	+21
YW	+101 5%

TC Gridiron 258  
**BLACKCAP OF ELLSTON D404**  
Blackcap Ellston P193 #

BW	70	Adj. 205/WR	641/101	Adj. 365/YR	1003/107	% IMF/Ratio	4.03/77	Adj. RE/Ratio	11.9/108	Rib Fat/Ratio	.24/80	Rump Fat/Ratio	.31/79
CW	+15	Marb.	+.25	RE	+.57	3%	FAT	+.006					
SW	+26.34	\$F	+37.94	10%	\$G	+25.11	\$B	+50.39	20%				
Scr.		CED	+5	CEM	+8	25%	SEN	-3.36					
Dam's Production:		BWR	2-104	WWR	2-101	YWR	1-107						
Sons @ Auction:	None	Daughters @ Auction:	None	Daughters In Herd:	None								
Est. Calf EPDs	BW	+1.0	25%	WW	+56	5%	Milk	+23	YW	+104	4%		
Carcass	Marb.	+.32	RE	+.39	15%	Fat	+.018	\$B	+51.05	20%			

- ★ Pasture exposed to Connealy Reward from 11-5-09 on. Observed 12-17-09.
- ★ The tamest heifer of the group! This heifer has been pettable since last summer. She definitely has her daddy's docility! Better yet, she has a superb set of EPDs. She is super long and has a nice profile. A rare and unique opportunity here!
- ★ We Aled dam D404 the same way for next year, so hopefully we will get a replacement daughter next.
- ★ Give G410 a good home, and pet her every once-in-a-while! She will enjoy it!
- ★ You know the song, "Outside My Window" by Sarah Buxton? THIS is the heifer you will want outside your window in your front pasture.

**163**  
**Fall Bred**  
**Heifer**

**BLKCP EMPRESS ELLSTON G415**

Reg. 16341333 Tattoo: L/R G415 8-17-2008

G A R Grid Maker #  
**TC GRIDIRON 258**  
TC Blackbird 7049 #

G D A R Traveler 044 #  
G A R Precision 2536  
T C Dividend 494 #  
O C C Blackbird 902D  
S A F Neutron #  
S A Queen Susan 102 #  
H&K Dark Star M36  
Blackcap Empress Ellston 417

BW	+2.8
WW	+55 10%
Milk	+15
YW	+97 10%

S A Neutron 377 #  
**BLACKCAP EMPRESS ELLSTON Z22**  
Blackcap Empress Ellston R23

BW	72	Adj. 205/WR	667/106	Adj. 365/YR	1001/107	% IMF/Ratio	3.36/64	Adj. RE/Ratio	11.7/106	Rib Fat/Ratio	.21/70	Rump Fat/Ratio	.26/67
CW	+16	30%	Marb.	+.03	RE	+.51	5%	FAT	-.011	15%			
SW	+25.25	\$F	+34.24	15%	\$G	+16.45	\$B	+41.53					
Scr.	+.45	CED	+3	CEM	+8	25%	SEN	+3.67					
Dam's Production:		BWR	5-99	WWR	5-103	YWR	4-104						
Sons @ Auction:	1-\$2800	Daughters @ Auction:	None	Daughters In Herd:	2-104								
Grandam's Production:		Sons @ Auction:	4-\$2525	Daughters @ Auction:	2-\$1675								
		BWR	10-102	WWR	10-101	YWR	9-100						
Est. Calf EPDs	BW	+1.1	25%	WW	+56	5%	Milk	+20	YW	+102	5%		
Carcass	Marb.	+.21	RE	+.36	20%	Fat	+.009	\$B	+46.62	30%			

- ★ A.I. to Connealy Reward 11-19-09. Pasture exposed to same bull from 11-27-09 on. Ultrasound safe to Reward, due approximately August 28, 2010.
- ★ I like this heifer! She has some frame and length, but enough body to go along with it. She also had the 3rd biggest ribeye scan of the fall heifers selling.
- ★ A full sister to G415 works in the herd (C438), and she is one of my very favorite fall cows. She has an exceptional udder, and you can walk up to her out in the pasture and pet her. This fall we were having predation problems in our fall calving pasture, and one night just before dark we saw C438 starting to calve. She has had twins before, and looked as big as a barn, so we thought it would be best to take her into the barn to calve to decrease the potential predator problem, especially if she happened to have twins. Joy, John & I walked her 1/2 mile through the pasture, up to the lot, and into the barn. Not once did she challenge us on where we were taking her. She was smart enough to know we were there to help! Luckily, she only had one healthy calf.
- ★ Grandam Z22 also has a good disposition and was the first cow to calve in the fall 2009 season.
- ★ I only have faint memories of great grandam known as "Old Bob" Born in 1977, she stayed in production until 19 years of age. One of Joy and John's favorite cows!



**H&K Midland E41**  
**Owned by Kelly Morrison**  
**\$4250 full brother**  
**to lot 164**

**164**  
**Fall Bred**  
**Heifer**

**MISS BLACKCAP ELLSTON G443**

Reg. 16341423 Tattoo: L/R G443 8-27-2008

BR Midland #  
**SVA MIDLAND 4089**  
Thomas Erica 8603 #

Twin Valley Precision E161 #  
BR Royal Lass 7036-19  
Sitz Traveler 8180 #  
Thomas Erica 5053  
Famous 7001 #  
Roth Formera 9199  
S A Neutron 377 #  
Miss Blackcap Ellston L759 #

Roth Famous 1006 #  
**MISS BLACKCAP ELLSTON B50**  
Miss Blackcap Ellston V71 #

BW	+3.1
WW	+51 20%
Milk	+17
YW	+90 25%

BW	73	Adj. 205/WR	648/103	Adj. 365/YR	954/102	% IMF/Ratio	4.71/90	Adj. RE/Ratio	10.8/98	Rib Fat/Ratio	.31/103	Rump Fat/Ratio	.50/128
CW	+11	Marb.	+.14	RE	+.11	FAT	+.035						
SW	+25.17	\$F	+28.77	30%	\$G	+12.08	\$B	+32.26					
Scr.	+1.15	10%	CED	+4	CEM	+8	25%	SEN	+4.64				
Dam's Production:		BWR	4-98	WWR	4-106	YWR	4-103						
Sons @ Auction:	2-\$3275	Daughters @ Auction:	None	Daughters In Herd:	None								
Est. Calf EPDs	BW	+1.2	25%	WW	+54	10%	Milk	+21	YW	+98	10%		
Carcass	Marb.	+.26	RE	+.16	Fat	+.032	\$B	+41.98					

- ★ A.I. to SydGen CC&7 11-12-09. Pasture exposed to Connealy Reward from 11-30-09 on. Observed with Reward 12-2-09. Projected EPDs are for a Reward calf.
- ★ A little bit different pedigree here.
- ★ Dam B50 is one of our favorites—docile with a great udder and top progeny performance. I wish I had a picture of her, but I don't. She looks a lot like the Famous daughter pictured on page 52, above lot 174.
- ★ B50 weaned at 806 lbs., WR 120 to be the 2nd top WW heifer calf of her crop! She also turned in a 1112 lb. yearling weight, YR 112 and a 13.3" ribeye, ratio 102.
- ★ B50 was the only daughter of Pathfinder V71 who was lost at a young age to a leg injury. V71 recorded 6-111 WR and four of her five bull calves averaging \$3975 were features. Two of her bull calves were the lead-off bulls in our sale.
- ★ Pathfinder great grandam L759 ended her career with 13-111 WR! Her most notable son, H&K Neutron 377 X3, has been in the very top sires of the Angus breed for growth EPDs. X3 is now a Pathfinder sire. See his picture on page 45.
- ★ Nine Pathfinders in this pedigree!



High school students visit Hoover Angus Farm to learn about heat detection, A.I., EPDs, and genetic selection.



**FALL BRED HEIFERS**





**H&K Gridiron C16**  
**Owned by Nold Family**  
**Angus and CJ Angus**  
**\$10,000 maternal**  
 **grandsire of lot 165**

**167 Fall Bred Heifer** **BLKCP EMPRESS ELLSTON G447**  
 Reg. 16341425 Tattoo: L/R G447 8-30-2008  
 Sitz Greatplains 9520 O C C Great Plains 943G #  
**WOODHILL STATESMAN 54K-90N** Sitz Pride 3038  
 Woodhill Lucy 666-54K Connealy Frontline #  
 Woodhill Fusion 177-70L V D A R Lucy 666  
**BLKCP EMPRESS ELLSTON B527 #** Bon View New Design 878 #  
 Blkcp Empress Ellston X296 Woodhill Barbara 674-177  
 S A Neutron 377 #  
 Blkcp Empress Ellston T280

BW	+9	20%
WW	+53	15%
Milk	+27	10%
YW	+82	

BW	Adj. 205/WR	Adj. 365/YR	% IMF/Ratio	Adj. RE/Ratio	Rib Fat/Ratio	Rump Fat/Ratio
69	673/107	924/99	6.70/128	9.6/87	.42/140	.66/169
CW	+8	Marb. +.50	25%	RE -.06	FAT +.079	
SW	+35.96	1%	\$F +20.24	\$G +16.03	\$B +31.83	
Scr.	+.84	20%	CEM +8	20%	CEM +9	15%
Dam's Production:		BWR 4-99	WWR 4-112		YWR 4-103	
Sons @ Auction:		3-\$4725		Daughters @ Auction: None		Daughters In Herd: None
Est. Calf EPDs	BW +1.5	WW +60	2%	Milk +27	10%	YW +104
Carcass	Marb. +.53	20%	RE +.30	30%	Fat +.046	\$B +51.75

- ★ A.I. to SydGen CC&7 11-22-09. Pasture exposed to Connealy Reward from 12-11-09 on. Ultrasound safe to CC&7, due approximately August 31, 2010.
- ★ G447 is a nice, long, clean-fronted heifer that combines low birth, easy fleshing, and high marbling.
- ★ G447 was the 3rd top scanning IMF heifer of the crop and the 2nd top IMF fall heifer to sell! Dam B527 is the 4th top IMF ratio cow of the herd (with 2 or more progeny scanned). B527 is the #5 \$W Hoover-owned female in a herd where 79 females rank in or above the top 1% of the breed for \$W!
- ★ Dam B527 has had 4 Statesman progeny in a row. . . on purpose. This has been a superb mating. Two full brothers to G447 have been photo features selling to Marvin Ellis and Bill Archer. These bulls were the 3rd and 4th heaviest weaning weight bull calves of their crop, respectively. Jason Stoll purchased G447's other full brother.
- ★ Undoubtedly one of the top young cows in the herd, B527 will be a cow you see more from in the future!

**165 Fall Bred Heifer** **ELLSTON BLACK BEAUTY G419**  
 Reg. 16344460 Tattoo: L/R G419 8-18-2008

TC Friction 3275 Connealy Forefront #  
**TC FRICTION 5130** TC Pride 8067 #  
 TC Barbara 3022 Bon View New Design 878 #  
 TC Barbara 1017  
 H&K Gridiron C16 TC Gridiron 258  
**ELLSTON BLACK BABS E419** Blackcap Empress Ellston V6  
 Ellston Black Babs T284 # H&K Black Fix M3  
 Black Babs V16

BW	+0	10%
WW	+53	15%
Milk	+20	
YW	+87	

BW	Adj. 205/WR	Adj. 365/YR	% IMF/Ratio	Adj. RE/Ratio	Rib Fat/Ratio	Rump Fat/Ratio
54	602/95	912/97	7.58/145	10.2/93	.29/97	.43/110
CW	+11	Marb. +.50	25%	RE +.24	FAT +.035	
SW	+32.13	2%	\$F +25.06	\$G +27.22	30%	\$B +46.44
Scr.	+.84	20%	CEM +9	15%	CEM +11	2%
Dam's Production:		BWR 1-86	WWR 1-95		YWR 1-97	
Sons @ Auction: None		Daughters @ Auction: None		Daughters In Herd: None		
Grandam's Production:		Sons @ Auction: 2-\$3250		Daughters @ Auction: 1-\$1700		
BWR 9-98		WWR 9-103		YWR 6-101		
Est. Calf EPDs	BW -.3	5%	WW +55	10%	Milk +22	YW +97
Carcass	Marb. +.44		RE +.22		Fat +.032	\$B +49.07

- ★ A.I. to Connealy Reward 11-17-09. Pasture exposed to same bull from 11-18-09 on. Ultrasound safe to Reward, due approximately August 26, 2010.
- ★ G419 has the highest IMF scan of any female selling today as well as the #1 Marbling EPD fall heifer selling!
- ★ Dam E419 scanned a 4.42 IMF, ratio 113 and a 11.3" ribeye, ratio 115.
- ★ Maternal grandsire C16 had exceptional thickness and puts the kind and style you want in your cattle.
- ★ Pathfinder grandam T284 brings in the marbling with 5-122 IMF ratio to be one of the top 15 cows of the herd for high IMF ratios on her progeny.

**168 Fall Bred Heifer** **BLKCP EMPRESS ELLSTON G484**  
 Reg. 16341326 Tattoo: L/R G484 9-13-2008

S A F Connection #  
**SYDGEN C C & 7** SydGen 1407 Corona 2016  
 SydGen Forever Lady 4087

H&K Black Fix M3  
**BLACKCAP EMPRESS R210 #**  
 Blackcap Empress L771

SVF Gdar 216 LTD #  
 S A F Royal Queen 5084  
 SydGen 1407 Corona 2016  
 S A F Forever Lady 8292  
 H&K Black Fix K491  
 Miss Empress K483  
 S A F Fix 8178 #  
 Blackcap Empress J353

BW	+3.2	
WW	+39	
Milk	+21	
YW	+86	

BW	Adj. 205/WR	Adj. 365/YR	% IMF/Ratio	Adj. RE/Ratio	Rib Fat/Ratio	Rump Fat/Ratio
75	537/85	953/102	4.65/89	11.5/105	.22/73	.33/85
CW	+18	20%	Marb. +.19	RE +.59	2%	FAT -.024
SW	+17.68		\$F +29.42	30%	\$G +25.01	\$B +50.47
Scr.	+.63	30%	CEM +1		CEM +6	\$EN +1.30
Dam's Production:		BWR 11-103	WWR 11-102		YWR 11-102	
Sons @ Auction: 3-\$2750		Daughters @ Auction: 3-\$1625		Daughters In Herd: None		
Est. Calf EPDs	BW +1.3	30%	WW +48		Milk +23	YW +96
Carcass	Marb. +.29		RE +.40	15%	Fat +.003	30%

- ★ Pasture exposed to Connealy Reward from 11-5-09 on. Ultrasound safe to Reward, due approximately August 21, 2010.
- ★ Dam R210 is an easy-to-spot cow in the fall calving pasture. She has a nice front end, good udder, and not a speck of excess leather. R210 is best known for the huge ribeyes she puts in her progeny. Three sons have averaged a 16.0" ribeye. Current breed average for yearling bulls is 12.37". R210 is the 4th high ribeye ratio cow in the herd with 10-112 ribeye ratio!
- ★ R210 has the 5th high \$Yield Grade index of any dam in the Angus breed.
- ★ Note that great grandam J353 is also the grandam of feature bull calf lot 6.
- ★ G484 comes backed by 12 generations of Blackcap Empress females at Hoover Angus that have withstood the rigors of culling at each generation.
- ★ G484 will be bred to the up-and-coming Reward herd sire. In two to three year's time, look for the Reward calves to be the ones at the top of the sale order.

**166 Fall Bred Heifer** **BLACKBIRD OF ELLSTON G448**  
 Reg. 16364281 Tattoo: L/R G448 8-27-2008

TC Friction 3275 Connealy Forefront #  
**TC FRICTION 5130** TC Pride 8067 #  
 TC Barbara 3022 Bon View New Design 878 #  
 TC Barbara 1017  
 S A V New Design 3105 Bon View New Design 1407 #  
**BLACKBIRD OF ELLSTON E448** S A V Pride 1329  
 Blackbird of Ellston Z362 S A V Fame 9312  
 Blackbird of Ellston V325

BW	+2.1	
WW	+51	20%
Milk	+26	15%
YW	+89	30%

BW	Adj. 205/WR	Adj. 365/YR	% IMF/Ratio	Adj. RE/Ratio	Rib Fat/Ratio	Rump Fat/Ratio
69	655/104	970/104	6.19/118	11.3/103	.32/107	.44/113
CW	+13	Marb. +.41	RE +.29	30%	FAT +.043	
SW	+28.63	15%	\$F +27.78	\$G +23.65	\$B +45.17	
Scr.	+.63	30%	CEM +6		CEM +9	15%
Dam's Production:		BWR 1-108	WWR 1-104		YWR 1-104	
Sons @ Auction: None		Daughters @ Auction: None		Daughters In Herd: None		
Grandam's Production:		Sons @ Auction: 1-\$2100		Daughters @ Auction: None		
BWR 6-97		WWR 6-103		YWR 4-103		
Est. Calf EPDs	BW +1.6	WW +53	15%	Milk +26	15%	YW +97
Carcass	Marb. +.33		RE +.26		Fat +.038	\$B +45.70

- ★ A.I. to Basin Excitement 11-19-09. Pasture exposed to Connealy Reward from 12-4-09 on. Ultrasound safe to Excitement, due approximately August 28, 2010.
- ★ This heifer is deep bodied and has a pedigree stacked with low birth weight bulls. Friction is one of our biggest "spread" bulls with a BW EPD in the best 15% of the breed and WW top 2%! It was the Friction sons in our 2009 auction that stole the show in the older bull division, averaging \$4722. They have been the cattlemen's choice for bulls that start out light but have added frame and weight at weaning time.
- ★ G448 was the first calf of dam E448. E448 had a 63 lb. birth weight, 661 lb. weaning weight, 906 lb. yearling weight, with positive carcass traits.
- ★ Grandam Z362 is a low birth weight cow that maintains a 356 day calving interval on her 6 progeny.

December is always a crazy month—we are putting together a sale catalog, clipping cattle for the sale, and preparing for calving season. When David, Joy or Landi finally steal a few minutes for Christmas shopping, it is a miracle! David & Landi found Joy a gift she really needed—a new pair of winter gloves! Joy saved them for the coldest day of the year (John's truck claimed it was 17 below). As Joy carefully cut loose the tags on the gloves, she bragged of how warm her new gloves would be. After a few moments of examining the gloves she proclaimed, "They are both left handed!"



**FALL BRED HEIFERS**





**ELBAMERE QUEEN ELLSTON G456 – Lot 169**

**169  
Fall Bred  
Heifer**

**ELBAMERE QUEEN ELLSTON G456**

Reg. 16341424 Tattoo: L/R G456 9-02-2008

G A R Grid Maker #  
**TC GRIDIRON 258**  
TC Blackbird 7049 #

Roth Famous 1006 #  
**ELBAMERE QUEEN ELLSTON B456**  
Elbamere Queen P22

G D A R Traveler 044 #  
G A R Precision 2536  
T C Dividend 494 #  
O C C Blackbird 902D  
Famous 7001 #  
Roth Formera 9199  
Bon View Paragon 2121 #  
Elbamere Queen L913

BW	+3.1
WW	+64 1%
Milk	+19
YW	+102 5%

BW	Adj. 205/WR	Adj. 365/YR	% IMF/Ratio	Adj. RE/Ratio	Rib Fat/Ratio	Rump Fat/Ratio		
73	782/124	1043/112	4.09/78	13.1/119	.27/90	.35/90		
CW	+14	Marb.	+11	RE	+55 3%	FAT	+0.01 30%	
SW	+31.72 3%	\$F	+35.79 10%	\$G	+19.64	\$B	+43.71	
Scr.	+65 30%	CE	+4	CEM	+9 15%	SEN	-.09	
Dam's Production:	BWR	4-99	WWR	4-103	YWR	2-106		
Sons @ Auction:		None		Daughters @ Auction:		None		
				Daughters In Herd:		1-117		
Est. Calf EPDs	BW	+1.2 25%	WW	+60 2%	Milk	+22	YW	+104 4%
Carcass	Marb.	+25	RE	+38 15%	Fat	+0.15	\$B	+47.71

- ★ Pasture exposed to Connealy Reward from 11-5-09 on. Observed with Reward 12-18-09.
- ★ G456 has the 15th highest WW EPD of any Hoover-owned female (approximately 625 females)! She has the 2nd highest WW EPD of any female to sell today!
- ★ A gorgeous Gridiron daughter backed by one of the most productive cow families in the herd. G456 was the #2 weaning weight heifer of the fall 2008 crop and tied as having the biggest ribeye scan! She offers a little more frame than most.
- ★ One of B456's daughters (maternal sister to G456) was identified as one of the elite cows of the herd and flushed this past fall. This cow raised the #1 weaning weight heifer calf of the crop, beating out G456 by only 10 pounds—thus mother and daughter weaned the #1 AND #2 top weaning weight heifer calves of the crop! B456's daughter is also has the #47 high \$W among 300,000+ Angus dams!
- ★ Grandam P22 and her daughters have produced 14 features in our past sales.
- ★ I could literally write books on this cow family, but I will condense it down to this: G456's great grandam L913 has 18 daughters, granddaughters, etc. working in the Hoover herd. L913 and these 18 descendants have weaned a total of 92 progeny with an average 105 WR! Five of the 10 eligible females have achieved Pathfinder status, and one more may be on the way in the 2010 report. It absolutely doesn't get any better than this!

Jessi Smith has a year-old boy and a 3 year-old girl at home. It was three days before Christmas, and we were finishing up burn blocking the first set of heifers for the sale. Beside the chute is a big pile of black hair.

Joy said to Jessi, "I've got the Christmas presents for your kids. . . A tube of KMar glue, a box of KMar heat detection patches, a gallon jug of red chin-ball ink, and a nice big sack of this black hair."

A look of horror crosses his faces as he asks, "What?"

Joy says, "Sure, just sit them in the middle of the living room floor, give them the glue, patches, ink, and hair, and the entertainment will be better than any movie you have seen in the past year!"

**170  
Fall Bred  
Heifer**

**BLKCP EMPRESS ELLSTON G441**

Reg. 16341337 Tattoo: L/R G441 8-27-2008

G A R Grid Maker #  
**TC GRIDIRON 258**  
TC Blackbird 7049 #

S A Neutron 2164 #  
**BLKCP EMPRESS ELLSTON X327 #**  
Blkcp Empress Ellston T204

G D A R Traveler 044 #  
G A R Precision 2536  
T C Dividend 494 #  
O C C Blackbird 902D  
S A F Neutron #  
S A Erica 742  
K L B Hi Flyer 76RE #  
Blackcap Empress Ellston H67

BW	+3.8
WW	+43
Milk	+18
YW	+78

BW	Adj. 205/WR	Adj. 365/YR	% IMF/Ratio	Adj. RE/Ratio	Rib Fat/Ratio	Rump Fat/Ratio		
74	557/88	914/98	3.91/75	10.2/93	.24/80	.30/77		
CW	+5	Marb.	+07	RE	+19	FAT	-.003 20%	
SW	+22.27	\$F	+20.12	\$G	+15.77	\$B	+28.69	
Scr.	+65 30%	CE	+3	CEM	+9 15%	SEN	+7.76 20%	
Dam's Production:	BWR	7-101	WWR	7-104	YWR	5-102		
Sons @ Auction:		2-\$3000		Daughters @ Auction:		1-\$1375		
				Daughters In Herd:		1-119		
Est. Calf EPDs	BW	+1.6	WW	+50 25%	Milk	+22	YW	+92 20%
Carcass	Marb.	+23	RE	+20	Fat	+0.13	\$B	+40.20

- ★ Pasture exposed to Connealy Reward from 11-5-09 on.
- ★ A Gridiron daughter with a little more frame than some.
- ★ X327 has achieved Pathfinder status, as well as her sire 2164. She has a 361 day calving interval on her 7 progeny. X327 has a superb Famous calf at her side right now. . . you will see more out of this guy!
- ★ Darrell Wagoner, Gordon Houser and Bill Higdon selected X327's progeny. Darrell's bull was the 2nd heaviest bull calf of his crop and Bill's heifer was a feature in our 2004 auction. Gordon's bull was an easy-to-look at full brother to G441.
- ★ Eight Pathfinders represented in this pedigree!

**171  
Fall Bred  
Heifer**

**MISS ERICA ELLSTON G470**

Reg. 16341338 Tattoo: L/R G470 9-03-2008

Sitz Greatplains 9520  
**WOODHILL STATESMAN 54K-90N**  
Woodhill Lucy 666-54K

S A Neutron 377 #  
**MISS ERICA ELLSTON Z42 #**  
Miss Erica Ellston H69

O C C Great Plains 943G #  
Sitz Pride 3038  
Connealy Frontline #  
V D A R Lucy 666  
S A F Neutron #  
S A Queen Susan 102 #  
Eileenmere Lad 205  
Miss Erica Ellston 10

BW	+2.2
WW	+51 20%
Milk	+24 25%
YW	+83

BW	Adj. 205/WR	Adj. 365/YR	% IMF/Ratio	Adj. RE/Ratio	Rib Fat/Ratio	Rump Fat/Ratio		
74	716/113	999/107	5.47/105	11.3/103	.41/137	.47/121		
CW	+14	Marb.	+34	RE	+17	FAT	+0.050	
SW	+31.07 5%	\$F	+21.94	\$G	+18.11	\$B	+39.07	
Scr.	+92 15%	CE	+5	CEM	+8 25%	SEN	+6.2	
Dam's Production:	BWR	6-99	WWR	6-106	YWR	6-104		
Sons @ Auction:		2-\$2000		Daughters @ Auction:		1-\$2000		
				Daughters In Herd:		1-92		
Est. Calf EPDs	BW	+2.1	WW	+59 3%	Milk	+25 20%	YW	+105 3%
Carcass	Marb.	+45 30%	RE	+42	Fat	+0.32	\$B	+55.37 10%

- ★ A.I. to SydGen CC&7 11-17-09. Pasture exposed to Connealy Reward from 12-11-09 on. Ultrasound safe to CC&7, due approximately August 26, 2010.
- ★ G470 tied as the 7th heaviest weaning weight heifer calf of the fall 2008 crop! Her added length really added the pounds to her. She did this with beautiful scan data!
- ★ Mike Carlson, David Leeper, and Paul King have selected Z42's first progeny to come to auction.
- ★ Grandam H69 was a big 'ole gal that was retired from the herd when she had 13-111 WR. Some people ask why we keep such old cows. When H69 was 15 years old she weaned a 763 pound bull calf, and had produced over \$21,000 worth of sons (and remember, in 1992 when her first son sold, bull calves averaged \$1551). I'd say she earned the place to stay in the herd for so long!



*Rain or shine,  
John can be  
found feeding  
cattle!*



**FALL BRED HEIFERS**



**172**  
**Fall Bred**  
**Heifer**

**BLACKBIRD OF ELLSTON G479**

Reg. 16342233 Tattoo: L/R G479 9-07-2008

Sitz Greatplains 9520  
**WOODHILL STATESMAN 54K-90N**  
Woodhill Lucy 666-54K

O C C Great Plains 943G #  
Sitz Pride 3038  
Connealy Frontline #  
V D A R Lucy 666  
Famous 7001 #  
Roth Formera 9199  
S A Neutron 377 #  
Blackbird of Ellston P213 #

BW	+1.9
WW	+54 10%
Milk	+25 20%
YW	+84

Roth Famous 1006 #  
**BLACKBIRD OF ELLSTON C454**  
Blackbird of Ellston Z386

BW	Adj. 205/WR	Adj. 365/YR	% IMF/Ratio	Adj. RE/Ratio	Rib Fat/Ratio	Rump Fat/Ratio
69	622/98	873/93	5.48/105	10.1/92	.32/107	.44/113
CW +5		Marb. +.38		RE +.14		FAT +.040
SW +33.52 1%		SF +21.78		SG +22.50		SB +35.82
Scr. +1.08 10%		CED +6		CEM +8 25%		SEN -.75
Dam's Production:		BWR 3-99		WWR 3-110		YWR 2-101
Sons @ Auction: 1-\$4750		Daughters @ Auction: None		Daughters In Herd: None		
Grandam's Production:		Sons @ Auction: 2-\$4250		Daughters @ Auction: None		
BWR 6-104		WWR 6-98		YWR 4-105		
Est. Calf EPDs	BW +.6 15%	WW +55 10%	Milk +25 20%	YW +95 15%		
Carcass	Marb. +.38	RE +.17	Fat +.035	SB +43.76		

- ★ Pasture exposed to Connealy Reward from 11-5-09 on.
- ★ G479 gets added length from her dam and grandam. Her \$W is above the top 1% of the breed!
- ★ Repeat customer Roger Cerven selected a darn good maternal brother to G479 in our 2009 auction.
- ★ Dam C454 has a WW EPD above the top 1% of the breed! C454 is an excellent uddered cow whose full sister that has earned Pathfinder status. C454 can always be counted on for one of the better fall calves. She is a smaller cow that will wean a higher portion of her body weight than many cows. C454 can pass on white on the underside to her progeny.
- ★ This morning was the morning of the December blizzard, and I helped feed and bed the herd sires in the bull run. Statesman is so easy fleshing, he normally just gets hay during the winter with no grain or silage, but today we felt bad and gave him some silage. Below zero wind chill and gusts to 41 mph makes a soft spot in everyone's heart for the animals!

**173**  
**Fall Bred**  
**Heifer**

**ELBAMERE QUEEN ELLSTON G491**

Reg. 16341426 Tattoo: L/R G491 9-20-2008

Sitz Greatplains 9520  
**WOODHILL STATESMAN 54K-90N**  
Woodhill Lucy 666-54K

O C C Great Plains 943G #  
Sitz Pride 3038  
Connealy Frontline #  
V D A R Lucy 666  
S A F Fame #  
S A V Juana 6232  
H&K Black Fix M3  
Elbamere Queen A85

BW	+.9 20%
WW	+48
Milk	+27 10%
YW	+73

S A V Fame 9312  
**ELBAMERE QUEEN ELLSTON B567 #**  
Elbamere Queen V324

BW	Adj. 205/WR	Adj. 365/YR	% IMF/Ratio	Adj. RE/Ratio	Rib Fat/Ratio	Rump Fat/Ratio
69	656/104	930/100	6.38/122	10.6/96	.43/143	.43/110
CW +3		Marb. +.41		RE +.16		FAT +.056
SW +35.14 1%		SF +13.62		SG +22.09		SB +31.77
Scr. +.60		CED +6		CEM +8 25%		SEN +1.43
Dam's Production:		BWR 4-99		WWR 4-111		YWR 4-105
Sons @ Auction: 2-\$4000		Daughters @ Auction: None		Daughters In Herd: None		
Est. Calf EPDs	BW +.1 10%	WW +52 15%	Milk +26 15%	YW +90 25%		
Carcass	Marb. +.40	RE +.18	Fat +.043	SB +41.74		

- ★ Pasture exposed to Connealy Reward from 11-5-09 on. Observed with Reward 12-2-09.
- ★ Statesman daughters tend to be nice moderate famed, easy keeping females, and G491 will fill that bill. Statesman daughters in production average 104 WR on their progeny, which has boosted Statesman's Milk EPD to +32.
- ★ G491 isn't the first high marbling son or daughter produced by B567, she records 4-111 IMF ratio. G491 is the 3rd high IMF scanning fall heifer to sell.
- ★ Let the information in the boxes above speak for itself on Pathfinder dam B567. She is a small cow that always weans a huge portion of her body weight. These are exactly the type of cattle that rise to the top of the \$W rankings. B567 is the herd's 15th top \$W female, far above the top 1% of the breed.

History tells us these fall heifers are excellent bargains in our sale... and this is certainly a buyer's market. Don't look back 3-4 years from now when good Angus females cost twice as much and wish you would have invested in good genetics February 2, 2010! We will only sell females one time in 2010—and that is February 2nd.

Fall heifers will not sell unless they can be assured ultrasound safe in calf. At the time of cataloging, time was still too short for ultrasound results on all animals.



**Miss Blackcap Ellston C446**  
Full sister to lot 174

**174**  
**Fall Bred**  
**Heifer**

**MISS BLACKCAP ELLSTON G434**

Reg. 16341336 Tattoo: L/R G434 8-24-2008

Famous 7001 #  
**ROTH FAMOUS 1006 #**  
Roth Formera 9199

S A F Fame #  
T K Karen 1369  
V N A R Fame 87G  
North Fork Formera 7069  
Bon View Paragon 1190 #  
Bon View Gammer 2070 #  
H&K Brutus 28  
Miss Blackcap Ellston F121

BW	+3.1
WW	+40
Milk	+19
YW	+70

Bon View Paragon 714 #  
**MISS BLACKCAP ELLSTON V180**  
Miss Blackcap Ellston H95

BW	Adj. 205/WR	Adj. 365/YR	% IMF/Ratio	Adj. RE/Ratio	Rib Fat/Ratio	Rump Fat/Ratio
67	576/91	869/93	4.19/80	9.4/85	.22/73	.25/64
CW +10		Marb. +.16		RE -.03		FAT -.018 5%
SW +23.14		SF +13.71		SG +17.63		SB +33.93
Scr. +.89 15%		CED +2		CEM +8 25%		SEN +8.11 20%
Dam's Production:		BWR 8-100		WWR 8-104		YWR 4-105
Sons @ Auction: 1-\$3500		Daughters @ Auction: 1-\$950		Daughters In Herd: 1-116		
Est. Calf EPDs	BW +1.2 25%	WW +48	Milk +22	YW +88 30%		
Carcass	Marb. +.27	RE +.09	Fat +.006	SB +42.82		

- ★ A.I. to Connealy Reward 11-13-09. Pasture exposed to same bull from 11-14-09 on. Ultrasound safe to Reward, due approximately August 22, 2010.
- ★ G434's full sister, C446, records 3-99 BWR, 3-116 WR, 3-113 YR in the Hoover herd and produced two sons averaging \$4825. These bulls were purchased by Double K Ranch and Bruce Crumpacker. C446 ties as the 5th top indexing cow of the herd! See her photo above.
- ★ C446's first daughter retained in the herd was flushed to Hoover Dam. This daughter was the 6th high weaning weight heifer of her crop. C446 had excellent individual performance and was the 4th heaviest weaning weight heifer calf of her crop.
- ★ Sire Famous achieved Pathfinder status for his daughter's exceptional progeny performance, early calving, and regular calving intervals.
- ★ V180's progeny were selected by Bill Hargrafen and Jim Wauters.

**175**  
**Fall Bred**  
**Heifer**

**ELLSTONS KEYMURA G418**

Reg. 16342879 Tattoo: L/R G418 8-18-2008

S A F Connection #  
**SYDGEN C C & 7**  
SydGen Forever Lady 4087

SVF Gdar 216 LTD #  
S A F Royal Queen 5084  
SydGen 1407 Corona 2016  
S A F Forever Lady 8292  
G A R Grid Maker #  
TC Blackbird 7049 #  
S A Neutron 2164 #  
Ellstons Keymura R150

BW	+1.7
WW	+57 5%
Milk	+20
YW	+106 2%

TC Gridiron 258  
**ELLSTONS KEYMURA E44**  
Ellstons Keymura V150

BW	Adj. 205/WR	Adj. 365/YR	% IMF/Ratio	Adj. RE/Ratio	Rib Fat/Ratio	Rump Fat/Ratio
63	633/100	980/105	5.07/97	11.4/104	.31/103	.46/118
CW +14		Marb. +.36		RE +.45 10%		FAT +.027
SW +27.06 30%		SF +42.75 3%		SG +25.82		SB +51.67 20%
Scr.		CED +7 30%		CEM +9 15%		SEN -4.04
Dam's Production:		BWR 1-98		WWR 1-100		YWR 1-105
Sons @ Auction: None		Daughters @ Auction: None		Daughters In Herd: None		
Est. Calf EPDs	BW +.5 15%	WW +57 5%	Milk +23	YW +106 2%		
Carcass	Marb. +.37	RE +.33 25%	Fat +.028	SB +51.69 20%		

- ★ A.I. to Connealy Reward 11-9-09. Pasture exposed to same bull from 11-14-09 on. Ultrasound safe to Reward, due approximately August 18, 2010.
- ★ G418 offers a very well-balanced set of EPDs, and her calf by Reward will have added thickness and eye appeal.
- ★ G418 is a ¾ sister to Hoover Dam. Mating a Gridiron daughter to CC&7 in this fashion has produced some excellent calves, and this mating is one both commercial cattlemen and registered breeders will look to for quality.
- ★ Grandam V150 was injured and lost, but not before Ron & LuAnne Brown selected a superb CC&7 son for \$4000.



**FALL BRED HEIFERS**



**176**  
**Fall Bred**  
**Heifer**

**BLKCP EMPRESS ELLSTON G481**

Reg. 16342877 Tattoo: L/R G481 9-08-2008

TC Friction 3275  
**TC FRICTION 5130**  
TC Barbara 3022

Connealy Forefront #  
TC Pride 8067 #  
Bon View New Design 878 #  
TC Barbara 1017  
Sitz Greatplains 9520  
Woodhill Lucy 666-54K  
Roth Famous 1006 #  
Blkcp Empress Ellston X275 #

Woodhill Statesman 54K-90N  
**BLKCP EMPRESS ELLSTON E496**  
Blkcp Empress Ellston B513

BW	+1.7
WW	+59 3%
Milk	+25 20%
YW	+94 15%

BW	67	Adj. 205/WR	667/106	Adj. 365/YR	950/102	% IMF/Ratio	5.22/100	Adj. RE/Ratio	10.9/99	Rib Fat/Ratio	.30/100	Rump Fat/Ratio	.36/92									
CW	+10	Marb.	+.37	RE	+.22	FAT	+.025	SW	+33.27	1%	\$F	+29.67	30%	\$G	+24.11	\$B	+43.59					
Scr.		CE	+7	30%	CEM	+9	15%	SEN	-4.85	Dam's Production: BWR 1-105 WWR 1-106 YWR 1-102												
Sons @ Auction: None				Daughters @ Auction: None				Daughters In Herd: None														
Grandam's Production: BWR 4-94				Sons @ Auction: None				Daughters @ Auction: 1-\$1000														
WWR 4-99				YWR 3-101																		
Est. Calf EPDs	BW	+5	15%	WW	+58	4%	Milk	+25	20%	YW	+100	5%	Carcass	Marb.	+.38	RE	+.21	Fat	+.027	\$B	+47.65	30%

- ★ A.I. to SydGen CC&7 11-11-09. Pasture exposed to Connealy Reward from 11-30-09 on. Ultrasound safe to Reward, due approximately September 9, 2010.
- ★ This is a pedigree I really like. She will make a cute, moderate framed cow.
- ★ Dam E496, grandam B513, and great grandam X275 are all nice uddered females. E496 is one of the smallest cows in the herd, but she weaned a darn big calf her first year! This is David's favorite type of cow.
- ★ E496 is the #1 \$W female owned by Hoover Angus and ranks #4 in the breed for \$W among 306,159 Angus dams! Four of the top 100 dams in the breed for \$W live in Ellston, IA, and three of them are sired by Statesman.
- ★ Grandam B513 is a cute cow you have to love. Her 2008 son sells as the top scanning ribeye bull of the fall 2008 crop, lot 97. He is an excellent CC&7 son. B513 has a 343 day calving interval.
- ★ Pathfinder X275 has had success also—her first son was the #1 weaning weight bull calf of the fall 2002 crop at 817 lbs. Trent Mayer selected this bull, and Mark Grossman, Chris Cadle, and Jesse Beaman chose her daughters at auction.
- ★ Trace this pedigree back fourteen generations to the "Blackcap Empress of Ellston" female born in 1944 at Hoover Angus sired by Revolution's Bell Boy.

**Apples to apples,  
or apples to oranges?**

All animals at Hoover Angus are treated similar. The top yearling bull doesn't get a pen by himself, nor are there bulls being fed and fitted for show that receive better nutrition than their contemporaries. All yearling bulls in this sale are from one contemporary group—because they were all were treated and managed in the same manner, by the same people and raised within a 5 mile radius of one another. When you look at each division of bulls for sale in this catalog, all have been treated equally—from birth until sale day. At Hoover Angus, the differences expressed in the bulls should be genetic rather than environmental.

Why is this important? At Hoover Angus, you ARE comparing apples to apples. Many sales offer cattle that have been raised in cooperator herds in different locations or even different states, under different management. Differences you see sale day may be genetic, but may be environmental.

Rest assured at Hoover Angus Farm, you DO get what you see. Every animal selling today was calved out by the same people. The same people that calve the cows, weigh the cattle, and make the breeding decisions are the ones making the culling decisions and writing this catalog.

Think of your family at the big Christmas dinner gathering. . . you know which relatives will be giggly and bubbly, which ones will show up late, and which ones will try (unsuccessfully) to stay awake until Santa comes. Now think of the Hoover cows as our extended family. We know which ones will be the best moms, which sire's daughters slick out in the summer, and which ones are the easiest keeping. If you have a question about a certain animal, please ask. If we can't answer a specific question about an animal, we can answer questions about the cow family—after all, 95% of the animals in this sale have been at Hoover Angus for 3 or more generations. Many of the cattle in this offering have withstood our selection and culling for 10+ generations.

We have been in the rolling hills of southern Iowa for 154 years, raising purebred Angus cattle for 82 years. The cow families and bulls that rise to the top have earned their place at the top, and have not just achieved it by chance.

**177**  
**Fall Bred**  
**Heifer**

**BLKCP EMPRESS ELLSTON G521**

Reg. 16342875 Tattoo: L/R G521 11-06-2008

Sitz Greatplains 9520  
**WOODHILL STATESMAN 54K-90N**  
Woodhill Lucy 666-54K

O C C Great Plains 943G #  
Sitz Pride 3038  
Connealy Frontline #  
V D A R Lucy 666  
Bon View New Design 878 #  
Woodhill Barbara 674-177  
S A Neutron 377 #  
Blkcp Empress Ellston T250 #

Woodhill Fusion 177-70L  
**BLKCP EMPRESS ELLSTON C475**  
Blkcp Empress Ellston X275 #

BW	+1.3 30%
WW	+48
Milk	+24 25%
YW	+80

BW	65	Adj. 205/WR	580/92	Adj. 365/YR	895/96	% IMF/Ratio	5.92/113	Adj. RE/Ratio	10.3/94	Rib Fat/Ratio	.24/80	Rump Fat/Ratio	.38/97									
CW	+3	Marb.	+.38	RE	+.10	FAT	+.027	SW	+31.76	3%	\$F	+20.18	30%	\$G	+24.01	\$B	+35.02					
Scr.		CE	+7	30%	CEM	+8	25%	SEN	+1.75	Dam's Production: BWR 2-100 WWR 2-93 YWR 1-96												
Sons @ Auction: None				Daughters @ Auction: None				Daughters In Herd: None														
Grandam's Production: BWR 7-101				Sons @ Auction: 1-\$2600				Daughters @ Auction: 3-\$1250														
WWR 7-105				YWR 7-99																		
Est. Calf EPDs	BW	+3	15%	WW	+52	15%	Milk	+25	20%	YW	+93	20%	Carcass	Marb.	+.38	RE	+.15	Fat	+.028	\$B	+43.36	30%

- ★ Pasture exposed to Connealy Reward from 11-5-09 on. Ultrasound safe to Reward, due approximately August 29, 2010.
- ★ G521 is the youngest fall heifer, but that won't hurt her production as a momma cow. She will end up a feminine, moderate framed cow. Statesman progeny in 11 herds average 98 BWR and 101 WR. He is a bull we have successfully used on heifers for the past 6 years. Sons get the nod of approval for those looking to lower birth weight while still keeping the thickness in their cattle. A nice set of Statesman bull calves sells in this year's offering.
- ★ Maternal grandsire Fusion is making some nice daughters.
- ★ Read about Pathfinder grandam X275 in lot 176's footnote. Great grandam T250 has also achieved the elite Pathfinder status.

**178**  
**Open Heifer**

**MARGIE OF ELLSTON H92**

Reg. 16404291 Tattoo: L/R H92 2-10-2009

TC Friction 3275  
**TC FRICTION 5130**  
TC Barbara 3022

Connealy Forefront #  
TC Pride 8067 #  
Bon View New Design 878 #  
TC Barbara 1017  
S A F Neutron #  
S A Queen Susan 102 #  
S A F Focus of E R #  
G G Margie 9186 #

S A Neutron 377 #  
**MARGIE OF ELLSTON C160**  
Margie of Ellston Z31 #

BW	+2.6
WW	+57 5%
Milk	+19
YW	+98 10%

BW	68	Adj. 205	571	WR	94					
Adj. 365/YR	%IMF/Ratio	Adj. RE/Ratio	Rib Fat/Ratio	Rump Fat/Ratio						
CW	+22	5%	Marb.	+.26	RE	+.29	30%	FAT	+.032	
SW	+27.46	25%	\$F	+34.47	15%	\$G	+17.75	\$B	+46.79	30%
Scr.		CE	+5	CEM	+8	25%	SEN	-.63	Dam's Production: BWR 4-113 WWR 4-90 YWR	
Sons @ Auction: None			Daughters @ Auction: None			Daughters In Herd: None				

- ★ This set of open heifers contains some of the most popular pedigrees we have to offer—CC&7s, Frictions, and Gridirons. The first Friction daughters in production appear to be making nice females! They will offer a little more frame size, yet have light birth weight calves. The Friction calves are really shaped for calving ease.
- ★ Nine Pathfinders are represented in this pedigree!
- ★ Dam C160 weaned at 768 lbs., WR 116, YW 1090 lbs., YR 114. She scanned a 13.6" ribeye which boosted her Ribeye EPD to the top 4% of current dams. Her WW and YW EPDs rank in the top 10% of the breed. C160 has a 357 day calving interval.
- ★ C160 has a Pathfinder maternal sister working in the herd. This female produced a \$6000 son in our 2008 auction.
- ★ Grandam Z31 produced a photo feature Gridiron daughter in our 2007 auction selling for \$4000, and two years later a bred heifer selling to Lee and Lori Crock. They report an excellent udder and a real nice heifer calf from this female. Z31 is the great grandam of feature bull lot 75.



**FALL BRED HEIFERS/OPEN HEIFERS**



Reasonably priced show heifers for anyone's budget!



**PRIDE OF ELLSTON H88 – Lot 179**



**SydGen Sedalia 8166**  
CC&7 son with show ring success—  
2009 Missouri State Fair Grand Champion Bull

**179** **PRIDE OF ELLSTON H88**  
**Open Heifer** Reg. 16404288 Tattoo: L/R H88 2-10-2009

S A F Connection #  
**SYDGEN C C & 7**  
SydGen Forever Lady 4087

S A Neutron 377 #  
**PRIDE OF ELLSTON B61 #**  
Pride of Ellston V61

SVF Gdar 216 LTD #  
S A F Royal Queen 5084  
SydGen 1407 Corona 2016  
S A F Forever Lady 8292  
S A F Neutron #  
S A Queen Susan 102 #  
Bon View Paragon 2121 #  
Thymac Pride U91

BW	+2.8
WW	+56 5%
Milk	+23
YW	+100 5%

BW 69		Adj. 205 639		WR 105	
Adj. 365/YR	%IMF/Ratio	Adj. RE/Ratio	Rib Fat/Ratio	Rump Fat/Ratio	
CW +19 15%	Marb. +.29	RE +.32 25%	FAT +.017		
\$W +26.68	\$F +36.91 10%	\$G +21.87	\$B +49.57 25%		
Scr. +.74 25%	CED +3	CEM +6	\$EN -4.87		
Dam's Production:		IMF Ratios 4-96		RE Ratios 4-93	
BWR 5-107		WWR 5-105		YWR 4-101	
Sons @ Auction: 4-\$2400		Daughters @ Auction: None		Daughters In Herd: None	

- ★ A gentle CC&7 daughter out of a cow that is a really quiet female when she calves. I wish someone would count the number of times I used the words "gentle" and "CC&7" in the same sentence in this catalog. It's the truth. . . if one thing is for sure about the CC&7 calves, it is they all have a great disposition. After all, CC&7 is the #1 undisputed Docility EPD bull in the breed!
- ★ Pathfinder dam B61 has a 362 day calving interval. B61's second son was a photo feature in our 2007 auction weaning at an even 800 lbs. and selling to Paul Smith. Other sons were purchased by Dennis Stormer and Steve McKay.
- ★ CC&7 has just started to see show ring success. A CC&7 son from his first crop at Sydenstrickers was the 2009 Missouri State Fair Grand Champion Bull.
- ★ With a disposition like hers, this would be a great heifer for a beginning 4-H member to show.

**180** **BLACKBIRD OF ELLSTON H164**  
**Open Heifer** Reg. 16404466 Tattoo: L/R H164 2-19-2009

BR Midland #  
**SVA MIDLAND 4089**  
Thomas Erica 8603 #

S A Neutron 377 #  
**BLACKBIRD OF ELLSTON Z26**  
Blackbird of Ellston L788

Twin Valley Precision E161 #  
BR Royal Lass 7036-19  
Sitz Traveler 8180 #  
Thomas Erica 5053  
S A F Neutron #  
S A Queen Susan 102 #  
S A V Dark Star 1076  
Blackbird of Ellston G100

BW	+4.3
WW	+43
Milk	+14
YW	+79

BW 78		Adj. 205 617		WR 101	
Adj. 365/YR	%IMF/Ratio	Adj. RE/Ratio	Rib Fat/Ratio	Rump Fat/Ratio	
CW +9	Marb. +.09	RE +.27	FAT +.026		
\$W +17.94	\$F +21.07	\$G +13.71	\$B +30.48		
Scr. +.47	CED -1	CEM +5	\$EN +9.30 15%		
Dam's Production:		IMF Ratios 5-97		RE Ratios 5-105	
BWR 7-106		WWR 7-101		YWR 5-102	
Sons @ Auction: 1-\$2250		Daughters @ Auction: None		Daughters In Herd: 2-99	

- ★ Dam Z26 scanned one of the biggest ribeye measurements in the herd's history. At 15.4; she ratioed 132! This advanced her Ribeye EPD to +.59, above the top 1% of the breed. A daughter of Z26 has the 7th high Ribeye EPD in the herd at +.72!
- ★ A full brother to Z26 was a photo feature in our 2003 auction selling to Dr. Palmer, who reports very good calves.
- ★ Z26 records a 357 day calving interval on her 7 progeny. The words, "Good Mom" are written on Z26's production records.
- ★ Grandam L788 produced three photo feature progeny in past auctions. She recorded 7-109 WR and a 359 day calving interval.

**181** **JESSICA OF ELLSTON H253**  
**Open Heifer** Reg. 16405512 Tattoo: L/R H253 3-06-2009

G A R Grid Maker #  
**TC GRIDIRON 258**  
TC Blackbird 7049 #

H&K Neutron 377 B2  
**JESSICA OF ELLSTON E265**  
Jessica of Ellston B242 #

G D A R Traveler 044 #  
G A R Precision 2536  
T C Dividend 494 #  
O C C Blackbird 902D  
S A Neutron 377 #  
C J Gammer 173 #  
Roth Famous 1006 #  
Jessica of Ellston Z240

BW	+4.2
WW	+65 1%
Milk	+21
YW	+111 1%

BW 73		Adj. 205 728		WR 119	
Adj. 365/YR	%IMF/Ratio	Adj. RE/Ratio	Rib Fat/Ratio	Rump Fat/Ratio	
CW +14	Marb. +.24	RE +.35 20%	FAT +.009		
\$W +25.82	\$F +44.76 2%	\$G +22.08	\$B +48.55 25%		
Scr. +.74 25%	CED +1	CEM +7	\$EN -6.54		
Dam's Production:		IMF Ratios None		RE Ratios None	
BWR 2-106		WWR 2-112		YWR None	
Sons @ Auction: None		Daughters @ Auction: None		Daughters In Herd: None	
Grandam's Production:		Sons @ Auction: None		Daughters @ Auction: 1-\$2100	
BWR 5-107		WWR 5-104		YWR 3-106	

- ★ H253 has the 12th highest WW EPD and YW EPD of any Hoover-owned female (approximately 625 females)! She has the highest WW EPD of any female to sell today!
- ★ This heifer has the style typical of a Gridiron daughter, and being backed by a B2 daughter and Famous doesn't hurt. Even though she is a little younger, she is going to stack up nicely with her older contemporaries! A nice heifer with big show potential!
- ★ Maternal grandsire B2 was the \$11,100 top-selling bull in our 2004 auction to Nold Family Angus in South Dakota. Doc Nold reports good manners and great daughters. Well Doc, you will be proud of this heifer—she is a product of what the B2 daughters are capable of!
- ★ Grandam B242 has a 357 day calving interval and Pathfinder status. B242 produced a very nice bred heifer in our 2009 auction purchased by Steve and Doug Garrett. A full sister to Garrett's heifer was the 14th high weaning weight heifer calf of the 2005 crop.
- ★ In 2009, B242 calved so quickly she had the calf born before we even knew she was calving. It is nice when they calve so easily, but we do prefer to have them in the calving pen first!
- ★ Eight Pathfinders are represented in this pedigree.

It was May 15, 2009. John said the creek was rising and out of its banks like never before. "Journey" and his girls were in grave danger - they were in the wrong part of the pasture. It was Andy Myers who swam through floodwaters to get the bull, cows, and calves to move to higher ground and safety.



**OPEN HEIFERS**





**ROSELLA OF ELLSTON H106** – Lot 182

**182** **ROSELLA OF ELLSTON H106**  
**Open Heifer** Reg. 16404297 Tattoo: L/R H106 2-12-2009

SA F Connection # <b>SYDGEN C C &amp; 7</b> SydGen Forever Lady 4087	SVF Gdar 216 LTD # SA F Royal Queen 5084 SydGen 1407 Corona 2016 SA F Forever Lady 8292 SA F Neutron # SA Queen Susan 102 # BA F Uncle Sam 3292 C J Rosella 209	<b>BW +2.2</b> <b>WW +58 4%</b> <b>Milk +24 25%</b> <b>YW +106 2%</b>
SA Neutron 377 # <b>ROSELLA OF ELLSTON A52 #</b> C J Rosella 394 #		

BW 68		Adj. 205 645		WR 106	
Adj. 365/YR	%IMF/Ratio	Adj. RE/Ratio	Rib Fat/Ratio	Rump Fat/Ratio	
CW +22 5%	Marb. +.36	RE +.44 10%	FAT +.026		
\$W +27.61 25%	\$F +42.34 3%	\$G +24.30	\$B +55.28 10%		
Scr. +1.08 10%	CED +4	CEM +6	SEN -7.69		
Dam's Production:		IMF Ratios 4-97		RE Ratios 4-97	
BWR 6-102		WWR 6-106		YWR 4-105	
Sons @ Auction: 3-\$3100		Daughters @ Auction: None		Daughters In Herd: 1-115	



**H&K Gridiron F67**  
**Owned by Dwayne Scar**  
**\$4250 maternal brother to lot 182**

- ★ A52 has achieved Pathfinder status with a 363 day calving interval and excellent progeny performance. Her good fertility is due in part to a big Scrotal EPD of +1.05, top 4% of the breed.
- ★ A52's last two bull calves have been excellent Gridiron sons. Purchased by Dwayne Scar and Jeff Vos—Sun Valley Angus, these two bulls had plenty of thickness and muscle. Dwayne's bull was the 4th heaviest yearling weight bull of the 2008 auction, the 3rd biggest scrotal bull, and was the third bull in the ring out of 105 bulls.
- ★ A52's individual performance: BW 71 lbs., WW 696 lbs., WR 112, YW 1115 lbs., YR 108, IMF 4.80, ratio 103, ribeye 15.0", ratio 107.
- ★ A52's daughter in the herd raised the #1 IMF bull in Hoover Angus history.
- ★ Pathfinder grandam is no longer in the herd but recorded 5-105 WR.
- ★ The last cow in the pedigree, CJ Rosella 209 is the dam of CJ Fix 31—the maternal grandsire of H&K Neutron 377 B2. B2 resides in South Dakota with Nold Family Angus, and was the lead-off, top selling bull of our 2004 auction at \$11,100. B2 was the #1 weaning weight bull calf of the crop at 914 lbs. Doc Nold reports that he loves the B2 daughters—great manners, and the daughters through AHIR average a 107 WR on their progeny! See his picture on page 22.

- ★ Docility, docility, docility—here it is! From the #1 sire in the breed for Docility, to a dam that is extremely gentle when she calves, H106 has got good temperament genes from both sides of her pedigree. One year after A52 calved, it was time for her to come out of her pen to get a drink. She didn't stand up when I opened the gate and walked in with her and her baby, so I sat down on her for a while. She didn't seem to mind! She is truly as good as they come.
- ★ We watched this heifer grow up this past summer, and she has been a standout the whole time. Definitely a CC&7 shining star!



**OPEN HEIFERS**



**183** **BLUEBLOOD LADY ELLSTON H129**  
**Open Heifer** Reg. 16404450 Tattoo: L/R H129 2-15-2009

TC Friction 3275 <b>TC FRICTION 5130</b> TC Barbara 3022	Connealy Forefront # TC Pride 8067 # Bon View New Design 878 # TC Barbara 1017 Bon View Paragon 2108 Bon View Erica 69 Eileenmere Lad 205 Blueblood Lady Ellston L727 # Blueblood Lady Ellston F33	BW +2.4 WW +51 20% Milk +20 YW +84
--	--	---

BW 70		Adj. 205 635		WR 104
Adj. 365/YR	%IMF/Ratio	Adj. RE/Ratio	Rib Fat/Ratio	Rump Fat/Ratio
CW +16 30%	Marb. +.25	RE +.27	FAT +.037	
\$W +28.31 20%	\$F +22.90	\$G +17.68	\$B +40.38	
Scr. +.56	CED +3	CEM +7	\$EN +2.81	
Dam's Production:		IMF Ratios 6-103	RE Ratios 6-106	
BWR 8-109		WWR 8-101	YWR 6-106	
Sons @ Auction: 4-\$3700		Daughters @ Auction: 2-\$1300	Daughters In Herd: None	

- ★ Sire Friction has been used extensively to moderate birth weights and aid in calving ease! Better yet, his growth EPDs have grown since we purchased him. He was a +51 WW EPD, and now with .64 accuracy, he has grown to a +65 WW EPD! Look at this year's set of Friction bull calves—they are a pretty impressive sire group!
- ★ Dam V97 has a 363 day calving interval on her progeny. She has a nice udder and calving book records say V97 is a quiet cow when she calves. Her last daughter was chosen by Paul Smith in our 2009 auction.
- ★ V97's first son was the top selling bull of our 2003 auction at \$5000 to Bill Hargrafen.
- ★ Grandam L727 earned Pathfinder status and recorded 10-112 WR and 5-114 ribeye ratio at the end of her career. Two daughters averaged a 14.6" ribeye (breed average 9.70") and three sons a 15.7" ribeye (breed average is 12.37"). Four of her sons and daughters were photo features.
- ★ Great grandam F33 ended her career with 10-103 WR. Five daughter descendants have achieved Pathfinder status!

**184** **MISS BLACKCAP ELLSTON H235**  
**Open Heifer** Reg. 16405506 Tattoo: L/R H235 2-28-2009

G A R Grid Maker # <b>TC GRIDIRON 258</b> TC Blackbird 7049 #	G D A R Traveler 044 # G A R Precision 2536 T C Dividend 494 # O C C Blackbird 902D Hyline Right Time 338 # Andora Gammer 9023 H&K Dark Star M163 # Miss Blackcap Ellston S50 #	BW +3.7 WW +55 10% Milk +23 YW +95 15%
---	--	---

BW 71		Adj. 205 681		WR 112
Adj. 365/YR	%IMF/Ratio	Adj. RE/Ratio	Rib Fat/Ratio	Rump Fat/Ratio
CW +7	Marb. +.14	RE +.23	FAT +.002 30%	
\$W +25.61	\$F +32.22 20%	\$G +18.46	\$B +35.95	
Scr. +.32	CED +2	CEM +7	\$EN -3.31	
Dam's Production:		IMF Ratios 1-112	RE Ratios 1-87	
BWR 2-100		WWR 2-109	YWR 1-101	
Sons @ Auction: None		Daughters @ Auction: None	Daughters In Herd: None	

- ★ A high performing Gridiron daughter here with a stout set of EPDs. She has a little more frame coming from the last two cows on the dam's side of her pedigree.
- ★ Note the dam of this heifer is a 1/2 sister to the dam of lot 185.
- ★ Maternal grandsire Right Time moderated birth weights and added marbling.
- ★ Eight Pathfinders are represented in this pedigree, including grandam and great grandam.



While momma gets Aled, Barb pets Hoover Dame.

**185** **MISS BLACKCAP ELLSTON H114**  
**Open Heifer** Reg. 16404299 Tattoo: L/R H114 2-13-2009

TC Friction 3275 <b>TC FRICTION 5130</b> TC Barbara 3022	Connealy Forefront # TC Pride 8067 # Bon View New Design 878 # TC Barbara 1017 Famous 7001 # Roth Formera 9199 H&K Dark Star M163 # Miss Blackcap Ellston Z215 # Miss Blackcap Ellston S50 #	BW +3.2 WW +56 5% Milk +23 YW +94 15%
--	--	--

BW 69		Adj. 205 613		WR 101
Adj. 365/YR	%IMF/Ratio	Adj. RE/Ratio	Rib Fat/Ratio	Rump Fat/Ratio
CW +17 25%	Marb. +.20	RE +.18	FAT +.011	
\$W +27.70	\$F +30.83	\$G +17.42	\$B +42.41	
Scr. +.63 25%	CED +3	CEM +9 15%	\$EN -3.00	
Dam's Production:		IMF Ratios 4-98	RE Ratios 4-102	
BWR 5-99		WWR 5-100	YWR 4-101	
Sons @ Auction: 1-\$1750		Daughters @ Auction: 2-\$1775	Daughters In Herd: None	

- ★ A Friction/Famous combination—one of my favorites! This heifer offers more frame and length, typical of Friction daughters.
- ★ Dam B296 has a 354 day calving interval on her 5 progeny. Progeny have sold to Mark Groth, Mike Carlson, and Jim Shaw.
- ★ Grandam Z215 weaned the 2nd heaviest bull calf of the 2005 crop that sold to Mike Christensen for \$6000. Z215 and her dam were both Pathfinders.
- ★ Eight Pathfinders are represented in this pedigree.

**186** **BLACKCAP EMPRESS ELLSTON H46**  
**Open Heifer** Reg. 16404280 Tattoo: L/R H46 2-02-2009

Connealy Danny Boy <b>ALC TITANIC V13T</b> ALC Rachel I12R	Connealy Timeline # Energy of Conanga 4851 Rito 112 of 2536 Rito 616 # ALC Rachel N22N G A R Grid Maker # TC Blackbird 7049 # S A V Fame 9312 Blackcap Empress Ellston V6	BW +3.9 WW +57 5% Milk +17 YW +96 15%
--	--	--

BW 70		Adj. 205 639		WR 105
Adj. 365/YR	%IMF/Ratio	Adj. RE/Ratio	Rib Fat/Ratio	Rump Fat/Ratio
CW +14	Marb. +.17	RE +.40 15%	FAT +.004	
\$W +24.71	\$F +32.45 20%	\$G +20.18	\$B +43.31	
Scr. +.32	CED +3	CEM +7	\$EN +1.76	
Dam's Production:		IMF Ratios 3-102	RE Ratios 3-102	
BWR 4-97		WWR 4-102	YWR 3-99	
Sons @ Auction: 2-\$2100		Daughters @ Auction: None	Daughters In Herd: None	
Grandam's Production:		Sons @ Auction: 3-\$4000	Daughters @ Auction: None	
BWR 5-103		WWR 5-111	YWR 4-105	

- ★ H46 stems from the same cow family as the #1 weaning weight bull calf of the spring 2009 crop—lot 57! The fourth generation dam of H46 is the grandam of lot 57.
- ★ Sire Titanic was selected as the top weaning weight bull of the 2008 Assman offering at 900 lbs., WR 123.
- ★ Dam C59 is a beautiful Gridiron daughter with a nice udder. She maintains a 356 day calving interval.
- ★ A full sister to C59 was the #1 weaning weight female of the 2005 crop at 805 lbs., WR 125!
- ★ Great grandam V6 produced the \$10,000 H&K Gridiron C16 bull selling to Nold Family Angus and CJ Angus and a feature bred heifer in our 2007 auction selling to Dean Lenz.
- ★ C59, Z16, and V6 are three of the 22 daughter descendants working in the herd stemming from the Blackcap Empress Ellston C57 cow. Four of these females have achieved Pathfinder status.

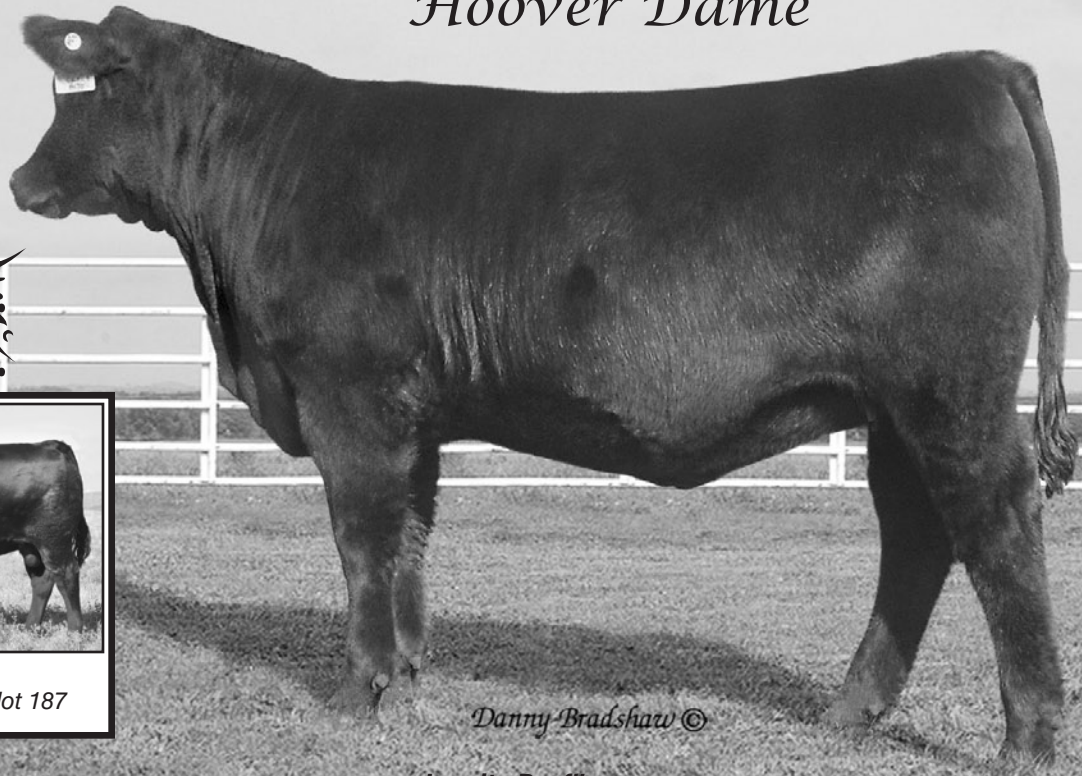
It won't be a free ride for a heifer to claim top yearling weight honors in this set of open heifers, the competition is stiff. These open heifers average a WW EPD in the top 5% of the breed and YW EPD top 10%! Stay tuned, yearling weights and ultrasound information will be available the week prior to the sale.



**OPEN HEIFERS**



# "Hoover Dame"



Hoover Dam:  
One of  
ORIGen's  
Top Selling  
Young Sires  
of 2009!



**Hoover Dam**

\$47,500 full brother to lot 187

Danny Bradshaw ©

## Igenity Profile:

10 Marbling, 9 Ribeye, 8 Docility, 7 Tenderness, 7 Stayability

## ERICA OF ELLSTON H170 – Lot 187

**187** **Open Heifer** **ERICA OF ELLSTON H170**  
Reg. 16404467 Tattoo: L/R H170 2-19-2009

S A F Connection #  
**SYDGEN C C & 7**  
SydGen Forever Lady 4087

TC Gridiron 258  
**ERICA OF ELLSTON C124 #**  
Erica of Ellston V65

SVF Gdar 216 LTD #  
S A F Royal Queen 5084  
SydGen 1407 Corona 2016  
S A F Forever Lady 8292  
G A R Grid Maker #  
TC Blackbird 7049 #  
S A Neutron 377 #  
Shottish V047

BW	+3.3
WW	+64 1%
Milk	+26 15%
YW	+116 1%

BW 69		Adj. 205 703		WR 115	
Adj. 365/YR	%IMF/Ratio	Adj. RE/Ratio	Rib Fat/Ratio	Rump Fat/Ratio	
CW +21 10%	Marb. +.53 20%	RE +.66 1%	FAT +.024		
SW +26.51	\$F +50.54 1%	\$G +32.87 10%	\$B +65.27 1%		
Scr. +1.10 10%	CED +5	CEM +8 25%	\$EN -12.75		
Dam's Production:		IMF Ratios 3-101		RE Ratios 3-103	
BWR 4-97		WWR 4-114		YWR 3-107	
Sons @ Auction: 2-\$26,000		Daughters @ Auction: None		Daughters In Herd: 1-110	
Grandam's Production:		Sons @ Auction: 2-\$4125		Daughters @ Auction: None	
BWR 7-98		WWR 7-103		YWR 7-102	

- ★ *The one and only full sister to Hoover Dam!*
- ★ Selling full possession and full interest. We reserve the right to one flush of at least 4 transferable quality embryos at buyer's convenience and seller's expense.
- ★ Without a doubt, the most exciting heifer calf born in Ellston, Iowa in 2009!
- ★ H170 is a full sister to the \$47,500 top-selling bull in 80+ year Hoover Angus history. Hoover Dam is owned by a progressive group of Angus breeders from Montana, Iowa, and California. He was a complete bull that blended exceptional phenotype and tremendous thickness with EPDs and performance perfection. Hoover Dam currently resides in the ORIGen stud, and semen is available through the ORIGen network and ABS. Please read more about Hoover Dam on page 1 of the herd sire directory.
- ★ Thick, yet feminine and showy, this gal has a million dollar disposition. "Hoover Dame" as we call her certainly has donor potential not only as a full sister to one of the most exciting young bulls of the 2009-2010 season, but as a standout individual also. H170 will be a notch bigger frame than Hoover Dam.
- ★ H170 is truly one of the best. Among 625 Hoover-owned females, here is how her EPDs stack up: She ranks #2 for \$B, #4 for YW EPD, #15 for Marbling EPD, #15 WW EPD, and #16 for Ribeye EPD!
- ★ Hoover Dame has stacked Ribeye genetics. The two closest sires in her pedigree,

- CC&7 and Gridiron, both rank in the top 1% of the breed for Ribeye EPD. Full brother Hoover Dam scanned a 16.1" ribeye, to earn a Ribeye EPD way above the top 1% of the breed. The #1 Ribeye EPD female in the Hoover herd was produced by Hoover Dame's cow family. This heifer has the 17th high Ribeye EPD among 48,900 non-parent Angus females! Two other females produced by this same cow family rank among the top 15 Hoover-owned females for RE EPD. These are among the 46 bred-and-owned Hoover females that rank in or above the top 1% of the breed for Ribeye EPD.
- ★ H170's maternal sister, E75, works in the Hoover herd with 2-110 WR. Her 2009 bull calf sells as lot 16. Take a look at his EPDs!
- ★ Perfection is probably too bold of a word, but hard-to-fault is certainly not a stretch on Pathfinder dam C124. She has a 368 day calving interval, and her production records are outlined in the boxes to the left. She is the 15th top indexing cow of the Hoover herd!
- ★ C124's EPDs: BW +4.2, WW +56 (2%), Milk +26 (15%), YW +99 (2%), MB +.23, RE +.57 (above 1%), Fat +.021, \$W +35.11 (above 1%), \$B +48.26 (10%).
- ★ C124 ranks #35 for Ribeye EPD in the Hoover herd.
- ★ C124 ranks #39 for the \$W index in the Hoover herd, where 79 females rank in or above the top 1% for this index.
- ★ C124's first son was a photo feature in our 2009 auction as a coming two year-old bull, and sold to long time repeat customers Roy and Rick Reno for \$4500.
- ★ Grandam V65 has two Pathfinder daughters, and the third daughter is not old enough for Pathfinder status yet, but records 2-109 WR and a 365 day calving interval. V65's second daughter is the 3rd high IMF ratio cow of the Hoover herd with 4-131 IMF ratio.
- ★ V65 produced the 4th top selling bull of our 2008 auction selling to Husz Brothers and Chateau Enterprises. This bull was named H&K All Around F32 because heaced every category—growth, high IMF, big RE, easy fleshing, and good disposition. V65's other son to come to auction was selected by Dustin McCoy—Dustin knows how to find the good ones!
- ★ Third generation dam V047 has produced four sons averaging \$5075. Her last son topped our 2002 auction at \$11,000 to Wayne James. This bull weaned at 825 lbs., WR 124, YW 1569 lbs., YR 123. He scanned a 5.23 IMF, ratio 129, ribeye 16.0", ratio 108. Z7 has over 150 progeny on AHIR averaging 103 WR and 103 YR. His WW, YW, and \$F are above the top 1% of the breed, while \$B is in the top 2% and Marbling top 15%. Z7 daughters in 7 herds have weaned over 100 progeny averaging 100 WR.
- ★ Another bull produced by V047 sold to Landmark Angus for \$4200. This bull has sired over 100 progeny in 13 Angus herds.
- ★ As you have just read, H170 comes from a cow family that has done a phenomenal job at Hoover Angus. V047 has left us with 17 daughters, granddaughters, and great granddaughters currently in production at Hoover Angus. V047 along with these 17 females have weaned a total of 81 progeny with an average 107 WR! Lots 13-17 trace back to this cow family.
- ★ I don't know if Darius Rucker knew about Hoover Dame when he wrote the song, but she is definitely "History in the Making". WW, YW, RE, \$F and \$B all in or above the top 1% of the breed!



# OPEN HEIFERS

