



H&K CC&7 G76 – Lot 68

**68
Bull**

H&K CC&7 G76

Reg. 16124996

Tattoo: L/R G76

2-08-2008

SA F Connection #
SYDGEN C C & 7
SydGen Forever Lady 4087

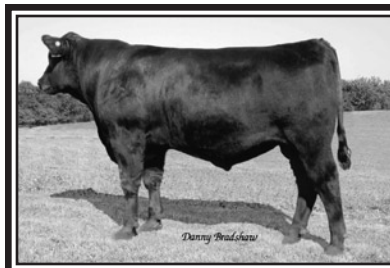
SA Neutron 377 #
GAMMER OF ELLSTON C2
C J Gammer 173 #

SVF Gdar 216 LTD #
SA F Royal Queen 5084
SydGen 1407 Corona 2016
SA F Forever Lady 8292
SA F Neutron #
SA Queen Susan 102 #
C J Fix 31
C J Gammer 128

BW	+3.5
WW	+62 2%
Milk	+24 30%
YW	+115 1%

BW	Adj. 205/ WR	Adj. 365/ YR	% IMF/ Ratio	Adj. RE/ Ratio	Rib Fat/ Ratio	Rump Fat/ Ratio	Scrotal	Pelvic
80	754/116	1360/114	7.05/147	14.5/108	.36/106	.49/123	40.5	264
CW +29 1%		Marb. +.64 10%		RE +.51 4%		FAT +.037		
SW +24.71		\$F +50.29 1%		\$G +30.73 15%		\$B +67.09 1%		
Scr. +.41		CED +2		CEM +6		SEN -10.56		
Dam's Production:			IMF Ratios 2-140			RE Ratios 2-100		
BWR 4-101			WWR 4-105			YWR 3-106		
Sons @ Auction: None			Daughters @ Auction: None			Daughters In Herd: 1-106		
Grandam's Production:			Sons @ Auction: 3-\$7650			Daughters @ Auction: 1-\$3750		
BWR 11-106			WWR 11-109			YWR 10-108		

- ★ Retaining 1/3 revenue sharing semen interest.
- ★ G76 is the big power bull that puts it all together nicely in a package with the #1 IMF and ribeye scan of the two year-old bulls selling and the #1 IMF scan of all the older bulls in the sale! He ties as the #1 Marbling EPD bull of the auction with lot 102!
- ★ G76 was the 14th heaviest weaning weight bull calf of the spring 2008 crop. His YW EPD stretches 3 pounds above the top 1% of the breed and he is the #1 YW EPD bull to sell!
- ★ I'll venture to guess G76 will be easier calving than expected by looking at his BW EPD. As with many CC&7 sons, his head is shaped for calving ease.
- ★ Dam C2 is a fertile cow that has settled AI every year, and records a 356 day calving interval. She is due to CC&7 again for 2010. Even though reproduction and high marbling are sometimes antagonistic, C2 has the best of both worlds. She is the #1 IMF ratio cow in the herd with two or more progeny scanned!
- ★ A full sister to G76 is a nice coming yearling heifer that will be retained in the herd.
- ★ C2's individual performance data: BW 82 lbs., adj. WW 737 lbs., WR 111, YW 1054 lbs., YR 110, IMF 4.55, ratio 102, ribeye 13.2", ratio 112.
- ★ Pathfinder grandam 173 produced three photo feature progeny including two sons at \$10,000+. Her first feature was a daughter and full sister to C2 purchased by



H&K Gridiron D2
Owned by Maass Angus
and Paulsen Angus
\$10,000 maternal brother
to the dam of lot 68

H&K Neutron 377 B2
Owned by
Nold Family Angus
\$11,100 top selling bull in
2004 sale and full brother
to the dam of lot 68



- Askdal Angus Farms of Minnesota. Next came B2, the full sister to C2 and lead-off, top-selling bull in our 2004 auction. The Nold Family of South Dakota reports superb dispositions and great daughters by B2. Finally, H&K Gridiron D2 sold to Paulsen Angus and Maass Angus of Iowa.
- ★ 173's last two daughters work in the Hoover herd. One of them was the first cow to be flushed at Hoover Angus. You will hear more in the future from this cow!
 - ★ 173 is sired by the highest performing Fix 8178 son ever recorded at CJ Angus with a 113 WR and a 112 YR. CJ Fix 31's dam, CJ Rosella 209, is the third generation dam of feature open heifer, lot 182. The 209 cow was double bred to the "Vince" bull, who left some of the finest daughters in Hoover Angus history.
 - ★ On the dam side of 173, you will find she traces back to the cow family that produced Bon View Gammer 85, one of the most popular cows in the breed's recent history. Her most notable son, Bon View New Design 878, was the breed's leading sire for registrations 4 years.
 - ★ A bull with a \$Beef above the top 1% of the breed!



2 YEAR OLD BULLS



69 Bull

H&K FRICTION G336

Reg. 16123310 Tattoo: L/R G336 3-20-2008

TC Friction 3275
TC FRICTION 5130
TC Barbara 3022

Connealy Forefront #
TC Pride 8067 #
Bon View New Design 878 #
TC Barbara 1017
C A Future Direction 5321 #
Roth Miss Countess 1508
S A Neutron 2164 #
Elbamere Queen N47 #

Table with 2 columns: Trait, Value. BW -1.0 4%, WW +57 5%, Milk +26 15%, YW +88

LaGrand Future Direction 3368
ELBAMERE QUEEN ELLSTON D291
Elbamere Queen S160

Table with 10 columns: BW, Adj. 205/WR, Adj. 365/YR, % IMF/Ratio, Adj. RE/Ratio, Rib Fat/Ratio, Rump Fat/Ratio, Scrotal, Pelvic. Includes production and auction data.

- ★ Here is a moderate framed Friction son that has excellent depth. His pedigree is stacked with low birth weight bulls, and G336 can certainly be used on heifers.
★ A full brother was purchased by Allan and Leland Dolecheck. This was a really nice bull, and we bred D291 the same way for next year.
★ Dam D291 is one of 5 daughters of S160 working in the herd, one of which is a Pathfinder. D291 is a gentle cow when she calves.
★ D291's BW EPD is in the best 10% of current Angus dams, as is grandam S160's.
★ Fourth generation dam F4 was a 1985 model that produced three sons averaging \$5450. Not too shabby!
★ G336's \$W index is way above the top 1% of the breed. This says his daughters are the keeper' kind! To learn more about the \$Value indexes, visit the Education Center at www.hooverangus.com.

71 Bull

H&K FRICTION G338

Reg. 16126678 Tattoo: L/R G338 3-20-2008

TC Friction 3275
TC FRICTION 5130
TC Barbara 3022

Connealy Forefront #
TC Pride 8067 #
Bon View New Design 878 #
TC Barbara 1017
Bon View New Design 878 #
Woodhill Barbara 674-177
Summitcrest Expo F292
Queen of Ellston R28

Table with 2 columns: Trait, Value. BW +.4 15%, WW +54 10%, Milk +24 30%, YW +85

Woodhill Fusion 177-70L
QUEEN OF ELLSTON D259
Queen of Ellston A345 #

Table with 10 columns: BW, Adj. 205/WR, Adj. 365/YR, % IMF/Ratio, Adj. RE/Ratio, Rib Fat/Ratio, Rump Fat/Ratio, Scrotal, Pelvic. Includes production and auction data.

- ★ Pair this guy up with lot 69 and cover a big pasture of heifers! With a 66 lb. birth weight and a BW EPD of +.4, G338 will certainly work fine on heifers. Both G336 and G338 are an outcross pedigree for many of our customers who have been using Neutron and Gridiron. Both bulls have the ability to increase milking ability.
★ G338 offers the second high IMF scan of the older bulls selling.
★ Friction sons were in high demand in last year's offering. Nine older Friction sons averaged \$4722.
★ Grandam A345 exemplifies big ribeye. She scanned a 15.5" ribeye, ratio 128 to earn her a Ribeye EPD 28th high among 200,000+ Angus dams! Her EPD of +.74 is way above the top 1% of the breed (+.54). For 3 consecutive years, A345 has been the #1 ribeye ratio cow of the herd (two or more progeny scanned) with 4-119 ribeye ratio!
★ Great grandam R28 comes in as the 5th high ribeye ratio cow of the herd with 6-112 ribeye ratio. R28 has produced two Pathfinder daughters.

70 Bull

H&K MIDLAND G350

Reg. 16123307 Tattoo: L/R G350 3-25-2008

BR Midland #
SVA MIDLAND 4089
Thomas Erica 8603 #

Twin Valley Precision E161 #
BR Royal Lass 7036-19
Sitz Traveler 8180 #
Thomas Erica 5053
G A R Sleep Easy 1009 #
Summitcrest Blackcap D010 #
S A Neutron 44
Blueblood Lady Ellston L727 #

Table with 2 columns: Trait, Value. BW +3.4, WW +44, Milk +15, YW +77

Summitcrest Sleep Easy F157
BLUEBLOOD LADY ELLSTON T77 #
Blueblood Lady Ellston R159 #

Table with 10 columns: BW, Adj. 205/WR, Adj. 365/YR, % IMF/Ratio, Adj. RE/Ratio, Rib Fat/Ratio, Rump Fat/Ratio, Scrotal, Pelvic. Includes production and auction data.

- ★ Unfortunately because this bull was a twin, his growth EPDs do not reflect his performance, but are a strict average of sire and dam.
★ Nine Pathfinders are represented in this bull's pedigree, and three generations in a row of Pathfinder dams! This is an enormous feat! Very few cow families across the nation accomplish this.
★ Midland 4089's dam works in the Sauk Valley Angus herd with 8-90 BWR, 8-105 WR, 7-102 YR, 7-101 IMF, and 7-105 RE ratio.
★ Tom Reed, Ralph McQuerry, Eddie Ehm, and Lonnie Hedinger have selected T77's other sons to come to auction.
★ Grandam R159 raised three heifers that were either the #1, #2, or #3 adjusted weaning weight heifer calves of their crop.
★ Great grandam L727 produced four feature sons or daughters in past auctions and recorded 10-112 WR.

72 Bull

H&K NEUTRON 377 G267

Reg. 16123338 Tattoo: L/R G267 3-01-2008

S A F Neutron #
S A NEUTRON 377 #
S A Queen Susan 102 #

V D A R New Trend 315 #
S A F Duchess 9029
S A F Power Fix #
S A Queen Susan 910
S A V Dark Star 1076
Keymura of Ellston H124
Marshall Pride 494
Blackcap Empress Ellston 637

Table with 2 columns: Trait, Value. BW +2.7, WW +43, Milk +11, YW +68

H&K Dark Star M36
BLACKCAP EMPRESS ELLSTON R23
Blackcap Empress Ellston 417

Table with 10 columns: BW, Adj. 205/WR, Adj. 365/YR, % IMF/Ratio, Adj. RE/Ratio, Rib Fat/Ratio, Rump Fat/Ratio, Scrotal, Pelvic. Includes production and auction data.

- ★ One of the last 377 sons to come to auction. 377 was the bull to hold popularity among commercial bull buyers for the longest period of time of any recent Hoover herd sire. Cattlemen still appreciate the length, frame, and pounds 377 sons add to their calf crops.
★ A full sister to G267 works in the herd, and produced the very nice lot 163 heifer. Read more about this cow on page 49. With 5-103 WR, this cow has proven her ability to milk, and G267's daughters will do the same, even though his EPDs might not indicate such.
★ A full brother to G267 was the #1 ribeye scanning bull of our 2008 auction with a 16.0" ribeye, ratio 116. In fact, R23's five 377 sons have averaged a 15.0" ribeye! Current breed average is 12.37".
★ Grandam was better known as "Old Bob" and reached 19 years of age in production at Hoover Angus. This cow went above and beyond the call of duty, and certainly a far cry from the story her EPDs would tell.
★ This is a growth bull to use on cows.

The pitfalls of paying too little

It's unwise to pay too much. But it's worse to pay too little. When you pay too much, you lose a little money, that is all. When you pay too little you sometimes lose everything, because the thing you bought was incapable of doing what it was bought to do. The common law of business balances prohibits paying a little and getting a lot. It can't be done.

John Ruskin, British Writer



2 YEAR OLD BULLS





H&K Gridiron G20
Owned by Glen Hanson
\$5000 full brother to the
sire of lot 73



H&K FRICTION G375 – Lot 75

73
Bull

H&K GRIDIRON G276

Reg. 16127425 Tattoo: L/R G276 3-02-2008

TC Gridiron 258
H&K GRIDIRON E160
Keymura Katy Z99 #

TC Stockman 365 #
G G MARGIE 9186 #
G G Margie 2123

G A R Grid Maker #
TC Blackbird 7049 #
S A Neutron 377 #
Keymura Katy V47 #
TC Stockman #
TC Pride 0014
J R Juice 2005 #
Landmark Margie 7122

BW	+1.9
WW	+61 2%
Milk	+25 20%
YW	+92 20%

BW	Adj. 205/ WR	Adj. 365/ YR	% IMF/ Ratio	Adj. RE/ Ratio	Rib Fat/ Ratio	Rump Fat/ Ratio	Scrotal	Pelvic
75	805/124	1354/114	4.03/84	13.9/104	.31/91	.50/125	44.5	255
CW	+19 15%	Marb.	+09	RE	+32 20%	FAT	+0 25%	
SW	+34.85 1%	SF	+26.92	SG	+15.34	SB	+40.98	
Scr.	+91 15%	CED	+5	CEM	+9 15%	SEN	-4.23	
Dam's Production:			IMF Ratios 8-103			RE Ratios 8-97		
BWR 9-98			WWR 9-108			YWR 8-104		
Sons @ Auction: 4-\$2625			Daughters @ Auction: 1-\$2100			Daughters In Herd: 2-107		

- ★ If you are looking for a bull to sire pounds, this is the bull. He was the 6th heaviest bull calf of his crop, and sired by the #1 weaning weight bull of the 2006 Hoover crop, E160. To read more about E160, turn to the footnote of lot 133 on page 41.
- ★ G276 is super deep chested and is a huge scrotal bull, ranking in the top 15% for Scrotal EPD. His \$W comes in above the top 1% of the breed, indicating this is a great bull if you are retaining replacement daughters and are selling calves by the pound at weaning.
- ★ A maternal brother sells as lot 10, one of the nicest Titanic sons.
- ★ Other sons of 9186 have been selected by Ken Dawson, Richard Clark, Roger Cerven, and Dr. Palmer with her daughter selected by Todd Reynolds. Todd & Dave Taylor are big fans of the Margie cow family, and rightly so!
- ★ 9186's first daughter achieved Pathfinder status and is the great grandam of feature bull lot 75. 9186 is one of the top Milk EPD females of the Hoover herd.
- ★ Use G276 on heifers or cows.

74
Bull

H&K CC&7 G104

Reg. 16119688 Tattoo: L/R G104 2-12-2008

S A F Connection #
SYDGEN C C & 7
SydGen Forever Lady 4087

S A Neutron 377 #
LORA OF ELLSTON D430
G G Lora 9231

SVF Gdar 216 LTD #
S A F Royal Queen 5084
SydGen 1407 Corona 2016
S A F Forever Lady 8292
S A F Neutron #
S A Queen Susan 102 #
TC Stockman 365 #
G G Lora 430

BW	+7 20%
WW	+52 20%
Milk	+20
YW	+97 15%

BW	Adj. 205/ WR	Adj. 365/ YR	% IMF/ Ratio	Adj. RE/ Ratio	Rib Fat/ Ratio	Rump Fat/ Ratio	Scrotal	Pelvic
58	610/94	1130/95	3.80/79	12.8/96	.24/71	.31/78	39.5	225
CW	+18 15%	Marb.	+27	RE	+44 10%	FAT	+0.07	
SW	+27.66 25%	SF	+35.43 15%	SG	+23.88	SB	+50.67 20%	
Scr.	+65 30%	CED	+10 10%	CEM	+11 2%	SEN	-1.21	
Dam's Production:			IMF Ratios 1-79			RE Ratios 1-96		
BWR 2-87			WWR 2-90			YWR 1-95		
Sons @ Auction: None			Daughters @ Auction: None			Daughters In Herd: None		
Grandam's Production:			Sons @ Auction: 2-\$4500			Daughters @ Auction: None		
BWR 5-100			WWR 5-108			YWR 4-102		

- ★ A CC&7 son to use on a larger pasture of heifers. G104 will leave moderate sized daughters that should be nice females.
- ★ G104 offers a big EPD spread from birth to weaning and yearling. Eleven of his EPDs rank in the top 2-30% of the breed!
- ★ Dam D430 was one of the first heifers to calve to CC&7 at Hoover Angus. We quickly discovered that when using CC&7 on moderate birth weight heifers, the calves were small at birth, and we had no calving difficulty.
- ★ Grandam 9231 produced two photo feature sons selling for \$5000 and \$4000 to Westlie Phipps and Ed Claycomb, respectively. Both were full brothers to D430. Ed's bull shined as the #1 adjusted weaning weight bull calf of his crop.

75
Bull

H&K FRICTION G375

Reg. 16123303 Tattoo: L/R G375 4-13-2008

TC Friction 3275
TC FRICTION 5130
TC Barbara 3022

Woodhill Statesman 54K-90N
MARGIE OF ELLSTON D273
Margie of Ellston B48 #

Connealy Forefront #
TC Pride 8067 #
Bon View New Design 878 #
TC Barbara 1017
Sitz Greatplains 9520
Woodhill Lucy 666-54K
H&K Neutron 377 X3 #
Margie of Ellston Z31 #

BW	+2.1
WW	+63 1%
Milk	+26 2%
YW	+99 10%

BW	Adj. 205/ WR	Adj. 365/ YR	% IMF/ Ratio	Adj. RE/ Ratio	Rib Fat/ Ratio	Rump Fat/ Ratio	Scrotal	Pelvic
81	662/112	1145/106	5.11/107	11.4/97	.33/118	.34/113	43	221
CW	+10	Marb.	+36	RE	+13	FAT	+0.44	
SW	+33.78 1%	SF	+33.13 20%	SG	+19.99	SB	+40.18	
Scr.	+85 20%	CED	+5	CEM	+7	SEN	-7.34	
Dam's Production:			IMF Ratios 2-104			RE Ratios 2-94		
BWR 3-106			WWR 3-105			YWR 2-103		
Sons @ Auction: None			Daughters @ Auction: None			Daughters In Herd: 1-117		
Grandam's Production:			Sons @ Auction: 1-\$6000			Daughters @ Auction: None		
BWR 5-103			WWR 5-102			YWR 3-102		

- ★ Retaining 1/3 revenue sharing semen interest.
- ★ G375 was in the younger contemporary group of bulls in 2008. He is a clean sheath Friction son that could be used on heifers or cows.
- ★ Both grandam and great grandam are Pathfinder cows, and it looks like dam D273 has a good shot at the honor this year. D273 is a moderate framed, heavy milking cow, and this bull should add milking ability to your cow herd. The first Friction daughters in production are doing well with a 104 WR on their progeny.
- ★ Grandam B48 produced a feature son in our 2008 sale that was the #1 yearling weight bull of the coming two year-olds in the sale and weighed over a ton sale day. He was an exceptional bull selected by Tom Doud for \$6000 as the third top selling bull of the auction.
- ★ Great grandam was a great uddered female whose last daughter was purchased as a bred heifer by Lee and Lori Crock. They report this female also had an excellent udder and a real nice heifer calf.
- ★ The dam of lot 73 is the fourth generation dam of G375. Please read more about her in this bull's footnote.

Certified Angus Beef® – Angus Beef at it's Best!

Ten carcass specifications ensure that every carcass earning the Certified Angus Beef® brand offers consumers the same quality eating experience every time. To receive the brand cattle must first be at least 51% black-hided or AngusSource® enrolled and meet these criteria:

1. Modest or higher marbling
2. Medium or fine marbling texture
3. "A" maturity for each, lean and skeletal characteristics
4. 10 to 16 square inch ribeye area
5. Less than 1,000 pound hot carcass weight
6. Less than 1 inch fat thickness
7. Superior muscling (restricts dairy influence)
8. Practically free of capillary rupture
9. No dark cutters
10. No neck hump exceeding 2 inches



2 YEAR OLD BULLS



76
Bull**H&K MARATHON G324**

Reg. 16123312 Tattoo: L/R G324 3-16-2008

B C Marathon 7022
LAGRAND MARATHON 6018
LaGrand Miss Baranda 4400

LaGrand 338 Right Time 3404
ERICA OF ELLSTON E250
Erica of Ellston B235 #

O C C Kirby 633K
Gibbet Hill Mignonne E37
W C C Special Design L309 #
Fairview Miss Baranda 6264
Hyline Right Time 338 #
Andora Gammer 9023
Roth Famous 1006 #
Erica of Ellston V65

BW	+1.4	30%
WW	+55	10%
Milk	+23	
YW	+95	15%

BW	Adj. 205/WR	Adj. 365/YR	% IMF/ Ratio	Adj. RE/ Ratio	Rib Fat/ Ratio	Rump Fat/ Ratio	Scrotal	Pelvic
64	707/109	1289/108	4.37/91	13.8/103	.37/109	.35/88	39.5	232
CW +18 15%		Marb. +.18		RE +.11		FAT +.017		
SW +30.37 10%		\$F +32.22 10%		\$G +14.60		\$B +40.49		
Scr. +.65 30%		CED +8 20%		CEM +7		SEN -3.31		
Dam's Production:			IMF Ratios 1-91			RE Ratios 1-103		
BWR 2-103			WWR 2-115			YWR 1-108		
Sons @ Auction: None			Daughters @ Auction: None			Daughters In Herd: None		
Grandam's Production:			Sons @ Auction: 1-\$3000			Daughters @ Auction: None		
BWR 5-95			WWR 5-102			YWR 4-105		

- ★ G324 is an easy fleshing bull that stems from the same cow family as Hoover Dam! Great grandam V65 is also the grandam of Hoover Dam. I could talk all day about this cow family, but it will save space if you read about this bull in the herd sire directory. See Hoover Dam's full sister on the inside back cover.
- ★ Dam E250 is certainly on her way to success—her 2009 bull calf was the #2 heaviest adjusted weaning weight bull calf of the crop at 827 lbs., WR 108. E250 ties as the 13th top indexing cow of the Hoover herd!
- ★ E250 was the #2 IMF heifer of her crop with a 6.52 IMF, ratio 156.
- ★ A maternal sister to E250 works in the herd with 3-110 WR.
- ★ Grandam B235 achieved Pathfinder status and has a great Famous udder. She is the 3rd high IMF ratio cow of the herd with 4-131 IMF ratio.
- ★ Fourth generation dam and her 17 daughters, granddaughters, and great granddaughters working in the Hoover herd have weaned a total of 81 progeny with an average 107 WR. Three of the 10 eligible daughters have achieved Pathfinder status. Less than 1% of eligible dams make the Pathfinder report in any given year.
- ★ G324 would be suitable for use on heifers.

77
Bull**H&K FRICTION G471**

Reg. 16341049 Tattoo: L/R G471 9-05-2008

TC Friction 3275
TC FRICTION 5130
TC Barbara 3022

Woodhill Statesman 54K-90N
MISS KEYMURA OF ELLSTON E474
Miss Keymura A509 #

Connealy Forefront #
TC Pride 8067 #
Bon View New Design 878 #
TC Barbara 1017
Sitz Greatplains 9520
Woodhill Lucy 666-54K
S A Neutron 377 #
Miss Keymura X347

BW	+1.1	25%
WW	+58	5%
Milk	+26	15%
YW	+87	

BW	Adj. 205/WR	Adj. 365/YR	% IMF/ Ratio	Adj. RE/ Ratio	Rib Fat/ Ratio	Rump Fat/ Ratio	Scrotal	Pelvic
67	755/110	1198/96	4.30/115	12.2/91	.42/140	.43/123	37	180
CW +7		Marb. +.37		RE +.09		FAT +.051		
SW +35.76 1%		\$F +23.18		\$G +19.27		\$B +34.78		
Scr. +.64 30%		CED +8 20%		CEM +9 15%		SEN -3.62		
Dam's Production:			IMF Ratios 1-115			RE Ratios 1-91		
BWR 1-101			WWR 1-110			YWR 1-96		
Sons @ Auction: None			Daughters @ Auction: None			Daughters In Herd: None		
Grandam's Production:			Sons @ Auction: 1-\$3400			Daughters @ Auction: 1-\$1500		
BWR 5-102			WWR 5-105			YWR 4-98		

- ★ An excellent choice to use on heifers. Friction sons were the top averaging sire group of the older bulls last year—they are low birth weight bulls that still pack a punch at weaning time.
- ★ Both dam and grandam are more moderate framed cows that are easier on feed resources. Hence, G471 has a \$W above the top 1% of the breed. Cattle that excel in \$W tend to have lower birth weights, good growth, optimum milk, and an economical mature size.
- ★ Pathfinder grandam A509 has a perfect 365 day calving interval.

78
Bull**H&K FRICTION G412**

Reg. 16341048 Tattoo: L/R G412 8-17-2008

TC Friction 3275
TC FRICTION 5130
TC Barbara 3022

S A V New Design 3105
BLKCP EMPRESS ELLSTON E456
Blkcp Empress Ellston X327 #

Connealy Forefront #
TC Pride 8067 #
Bon View New Design 878 #
TC Barbara 1017
Bon View New Design 1407 #
S A V Pride 1329
S A Neutron 2164 #
Blkcp Empress Ellston T204

BW	+1.1	25%
WW	+62	2%
Milk	+28	5%
YW	+100	10%

BW	Adj. 205/WR	Adj. 365/YR	% IMF/ Ratio	Adj. RE/ Ratio	Rib Fat/ Ratio	Rump Fat/ Ratio	Scrotal	Pelvic
66	823/119	1394/112	3.79/101	14.7/110	.34/113	.50/143	40	194
CW +17 20%		Marb. +.36		RE +.24		FAT +.043		
SW +34.73 1%		\$F +34.54 15%		\$G +20.22		\$B +46.25 30%		
Scr. +.43		CED +8 20%		CEM +10 10%		SEN -9.55		
Dam's Production:			IMF Ratios 1-101			RE Ratios 1-110		
BWR 1-100			WWR 1-119			YWR 1-112		
Sons @ Auction: None			Daughters @ Auction: None			Daughters In Herd: None		
Grandam's Production:			Sons @ Auction: 2-\$3000			Daughters @ Auction: 1-\$1375		
BWR 7-101			WWR 7-104			YWR 5-102		

- ★ G412 is the 3rd heaviest weaning weight bull calf of his crop! He even had the 4th biggest ribeye scan in the fall bull division. His length will be disguised by his superior depth. He will transmit his easy fleshing ability to his progeny.
- ★ A newer calving ease pedigree here for our repeat customers.
- ★ Dam E456 weaned at 683 lbs., WR 110, YW 937 lbs., YR 105, IMF 5.37, ratio 138 and Ribeye 10.8; ratio 110.
- ★ Pathfinder grandam has been a solid cow that has maintained a 361 day calving interval.
- ★ Use this bull to strengthen milk in your herd, he is the #1 Milk EPD older bull to sell! Better yet, he ties as the #1 WW EPD fall bull and has a \$W above the top 1% of the breed. A complete package to cover all the bases.

79
Bull**H&K CC&7 G416**

Reg. 16341020 Tattoo: L/R G416 8-17-2008

S A F Connection #
SYDGEN C C & 7
SydGen Forever Lady 4087

H&K Black Fix M3
ELLSTON PRIDE T312
Ellston Pride P199 #

SVF Gdar 216 LTD #
S A F Royal Queen 5084
SydGen 1407 Corona 2016
S A F Forever Lady 8292
H&K Black Fix K491
Miss Empress K483
S A F Fix 8178 #
T T Pride Z124

BW	+1.6	
WW	+46	
Milk	+20	
YW	+84	

BW	Adj. 205/WR	Adj. 365/YR	% IMF/ Ratio	Adj. RE/ Ratio	Rib Fat/ Ratio	Rump Fat/ Ratio	Scrotal	Pelvic
70	680/99	1118/100	3.29/100	11.8/100	.25/100	.35/100	38	202
CW +15 30%		Marb. +.30		RE +.45 5%		FAT -.009 15%		
SW +26.42		\$F +24.78		\$G +27.06 30%		\$B +49.33 25%		
Scr. +.64 30%		CED +5		CEM +8 25%		SEN +2.81		
Dam's Production:			IMF Ratios 4-84			RE Ratios 4-103		
BWR 7-99			WWR 7-101			YWR 4-104		
Sons @ Auction: 2-\$2900			Daughters @ Auction: 1-\$1425			Daughters In Herd: None		

- ★ G416 injured a hind leg prior to yearling weight time. At yearling and ultrasound time, the bull was recovering, but since he had not gained as well because of the injury, we pulled him out of the contemporary group to be more fair to him. Since this time, he has made a full recovery. By sale time, he will still weigh less than what he could have, but he still is a very valuable bull.
- ★ This bull is suitable for use on heifers or cows. He is tame and pettable.
- ★ Dam T312 has a 359 day calving interval. Progeny have sold to Howard Pothoven, Bill Higdon, and Don Campbell.
- ★ Since sire CC&7 was purchased in the fall of 2006, his BW EPD has gone down by .6, his WW EPD up 10 lbs., Milk has stayed the same, and YW EPD up 43 lbs! His \$B has moved from +40.41 to +71.67 to make him the 7th high proven sire for \$B!

Hoover Angus Farm offers free boarding of bulls purchased in our sale until May 1, 2010. On or before May 1st, we ask that bulls be picked up so lots can be cleared to make room to A.I. 300 spring-calving females.

80% of the older bulls selling today scanned a ribeye measurement bigger than breed average!



2 YEAR OLD BULLS/FALL BULLS



80 Bull

H&K GRIDIRON G469

Reg. 16341026 Tattoo: L/R G469 9-05-2008

G A R Grid Maker #
TC GRIDIRON 258
 TC Blackbird 7049 #

Mogck New Design 878 C1181
MISS KEYMURA KATY B400
 Miss Keymura Katy S240

G D A R Traveler 044 #
 G A R Precision 2536
 T C Dividend 494 #
 O C C Blackbird 902D
 Bon View New Design 878 #
 Mogck Black Lass C 935
 H&K Ferragamo J313
 Miss Keymura Katy H41

BW	+3.3
WW	+58 5%
Milk	+16
YW	+101 10%

BW	Adj. 205/ WR	Adj. 365/ YR	% IMF/ Ratio	Adj. RE/ Ratio	Rib Fat/ Ratio	Rump Fat/ Ratio	Scrotal	Pelvic
80	814/118	1400/112	3.33/89	13.1/98	.41/137	.44/126	36.5	224
CW +14		Marb. +.17		RE +.23		FAT +.031		
SW +27.45		30% \$F +37.14		10% \$G +14.97		\$B +39.44		
Scr. +.04		CED +2		CEM +7		SEN +3.67		
Dam's Production:			IMF Ratios 3-100			RE Ratios 3-94		
BWR 4-102			WWR 4-103			YWR 3-106		
Sons @ Auction: 1-\$3300			Daughters @ Auction: None			Daughters In Herd: None		

- ★ G469 is the 5th heaviest weaning weight bull of his crop at 814 pounds! Use him to cover a larger pasture of cows. Pair him up with 1/2 brother lot 82 and cover even a bigger pasture of cows. I guarantee you will love their calves!
- ★ Dam B400 has a 355 day calving interval. B400 is raising the best fall heifer calf right now according to Joy.
- ★ If you don't have a Gridiron son in your pasture, now is the time to own one. Over 200 Gridiron daughters are in 68 different Angus herds. Gridiron daughters like Hoover Dam's mother are drawing attention from across the country.
- ★ Recommended for use on cows.

81 Bull

H&K GRIDIRON G467

Reg. 16341027 Tattoo: L/R G467 9-04-2008

G A R Grid Maker #
TC GRIDIRON 258
 TC Blackbird 7049 #

S A V Fame 9312
ELBAMERE QUEEN A618
 Elbamere Queen X286

G D A R Traveler 044 #
 G A R Precision 2536
 T C Dividend 494 #
 O C C Blackbird 902D
 S A F Fame #
 S A V Juana 6232
 S A Neutron 2164 #
 Elbamere Queen A85

BW	+2.6
WW	+55 10%
Milk	+16
YW	+95 15%

BW	Adj. 205/ WR	Adj. 365/ YR	% IMF/ Ratio	Adj. RE/ Ratio	Rib Fat/ Ratio	Rump Fat/ Ratio	Scrotal	Pelvic
73	762/111	1343/108	2.94/79	14.6/109	.23/77	.30/86	39.5	203
CW +10		Marb. +.05		RE +.45 5%		FAT -.008 15%		
SW +27.76		25% \$F +32.22		20% \$G +17.40		\$B +37.57		
Scr. +.68		30% CED +5		CEM +10 10%		SEN +4.56		
Dam's Production:			IMF Ratios 2-84			RE Ratios 2-105		
BWR 5-97			WWR 5-102			YWR 2-111		
Sons @ Auction: 1-\$4200			Daughters @ Auction: None			Daughters In Herd: None		

- ★ G467 is the 10th heaviest weaning weight bull of his crop. He is a bigger framed powerful Gridiron son that will add length and pounds of weaning growth to his calves.
- ★ G467 is an eye-catcher and standout in this pen of bulls.
- ★ Dam A618 is a low birth weight cow with a 350 day calving interval on her progeny. Her sire, Fame, was known for leaving good udders, and A618 certainly fits the mold.

THE VALUE OF A REGISTERED ANGUS BULL!

A registered Angus bull provides many advantages over a "purebred Angus" bull with no registration paper. Here are some of the things often taken for granted, yet these parts of the registration paper are very important aspects of purchasing a registered Angus bull.

- The breeder's name: This may be the most important part of the paper. We are proud to supply superior genetics to you. Our name and reputation is on the line of the bull you purchase from Hoover Angus and we stand behind it.
- Permanent record of your ownership. For AngusSource® participation, all bulls used must be properly registered and transferred by the breeder to your name.
- Pedigree record and proof of currently known genetic defect status.
- EPDs current as of registration print date, and registration number to be able to access current EPDs 24 hours a day, 365 days a year through the AAA site (available to both members and non-members).



H&K GRIDIRON G468 - Lot 82

82 Bull

H&K GRIDIRON G468

Reg. 16341033 Tattoo: L/R G468 9-05-2008

G A R Grid Maker #
TC GRIDIRON 258
 TC Blackbird 7049 #

S A Bando 598-1309
BLACKBIRD OF ELLSTON A608
 Blackbird of Ellston V325

G D A R Traveler 044 #
 G A R Precision 2536
 T C Dividend 494 #
 O C C Blackbird 902D
 Bon View Bando 598 #
 S A Wetonkas Erica 1317
 H&K Black Fix R211
 Blackbird of Ellston S251

BW	+2.7
WW	+55 10%
Milk	+19
YW	+97 15%

BW	Adj. 205/ WR	Adj. 365/ YR	% IMF/ Ratio	Adj. RE/ Ratio	Rib Fat/ Ratio	Rump Fat/ Ratio	Scrotal	Pelvic
76	844/122	1420/114	3.37/90	13.8/103	.36/120	.42/120	41	217
CW +16		25% Marb. +.19		RE +.29 25%		FAT +.006		
SW +28.17		20% \$F +34.24		15% \$G +19.26		\$B +44.34		
Scr. +1.21		5% CED +3		CEM +10 10%		SEN +1.66		
Dam's Production:			IMF Ratios 5-91			RE Ratios 5-104		
BWR 5-100			WWR 5-107			YWR 5-105		
Sons @ Auction: 2-\$4250			Daughters @ Auction: 1-\$1800			Daughters In Herd: None		

- ★ G468 is the 2nd heaviest weaning weight bull calf of his crop at 844 pounds! G468 and lot 80 are two meaty Gridiron sons! G468 is one of the favorites of visitors to the farm.
- ★ This is a big scrotal bull, with a Scrotal EPD in the top 5% of the breed. Dam A608 has a Scrotal EPD above the top 1%.
- ★ Two full brothers have sold to Fallon & Fallon for \$4500 and Ed Claycomb for \$4000. Tom DeYoung purchased a full sister to G468, making A608's progeny reside in 3 states.
- ★ A608 has a 366 day calving interval on her 5 calves.
- ★ Recommended for use on cows.

83 Bull

H&K CC&7 G473

Reg. 16341044 Tattoo: L/R G473 9-06-2008

S A F Connection #
SYDGEN C C & 7
 SydGen Forever Lady 4087

S A Neutron 2164 #
ELBAMERE QUEEN V289 #
 Elbamere Queen E182

SVF Gdar 216 LTD #
 S A F Royal Queen 5084
 SydGen 1407 Corona 2016
 S A F Forever Lady 8292
 S A F Neutron #
 S A Erica 742
 Crackerjack Baros 61
 Elbamere Queen 757

BW	+2.0
WW	+41
Milk	+18
YW	+77

BW	Adj. 205/ WR	Adj. 365/ YR	% IMF/ Ratio	Adj. RE/ Ratio	Rib Fat/ Ratio	Rump Fat/ Ratio	Scrotal	Pelvic
75	654/95	1193/96	2.88/77	12.6/94	.33/110	.38/109	38	182
CW +11		Marb. +.17		RE +.18		FAT +.018		
SW +23.60		\$F +19.91		\$G +16.56		\$B +34.76		
Scr. +.48		CED +7 30%		CEM +11 2%		SEN +6.71 25%		
Dam's Production:			IMF Ratios 5-94			RE Ratios 5-101		
BWR 8-99			WWR 8-104			YWR 6-105		
Sons @ Auction: 4-\$3575			Daughters @ Auction: 1-\$1400			Daughters In Herd: None		

- ★ A CC&7 son that should be suitable for use on cows or heifers. His dam is an older cow, which gives him a disadvantage when it comes to calculation on his EPDs.
- ★ Pathfinder dam V289 has maintained a 357 day calving interval.
- ★ Bill Archer, Mike Gage, Ed Claycomb, and Richard Notz have selected V289's first sons to come to auction.



FALL BULLS



84
Bull

H&K STATESMAN G464

Reg. 16341034 Tattoo: L/R G464 9-04-2008

Sitz Greatplains 9520
WOODHILL STATESMAN 54K-90N
Woodhill Lucy 666-54K

O C C Great Plains 943G #
Sitz Pride 3038
Connealy Frontline #
V D A R Lucy 666
Bon View New Design 878 #
Woodhill Barbara 674-177
Summitcrest Sleep Easy F157
Blue Ribbon Heiress S55

BW	+1.6
WW	+59 4%
Milk	+26 15%
YW	+89 30%

Woodhill Fusion 177-70L
BLUE RIBBON HEIRESS B536 #
Blue Ribbon Heiress X171

BW	Adj. 205/ WR	Adj. 365/ YR	% IMF/ Ratio	Adj. RE/ Ratio	Rib Fat/ Ratio	Rump Fat/ Ratio	Scrotal	Pelvic
75	817/119	1334/107	3.64/97	15.6/116	.52/173	.62/177	38	208
CW +8		Marb. +.35		RE +.31 25%		FAT +.066		
SW +36.64 1%		SF +24.74		SG +19.74		SB +36.44		
Scr. +.60		CED +6		CEM +7		SEN -2.79		
Dam's Production:			IMF Ratios 4-102			RE Ratios 4-100		
BWR 4-100			WWR 4-112			YWR 3-103		
Sons @ Auction: None			Daughters @ Auction: 1-\$1700			Daughters In Herd: 1-107		

- ★ G464 is the 4th heaviest weaning weight bull calf of his crop! This guy has meat and muscle and certainly pushed the scales down at weaning time. Talking about muscle... he has the 2nd biggest ribeye scan of all the fall bulls! G464 is one of the best Statesman sons we have produced.
- ★ A full sister in the herd records 2-107 WR.
- ★ Pathfinder dam B536 has earned this elite status by her superior progeny performance along with a regular calving interval.
- ★ Sire Statesman has the 29th high \$W in the breed, and G464's \$W is way above the top 1% of the breed.

85
Bull

H&K STATESMAN G408

Reg. 16341019 Tattoo: L/R G408 8-14-2008

Sitz Greatplains 9520
WOODHILL STATESMAN 54K-90N
Woodhill Lucy 666-54K

O C C Great Plains 943G #
Sitz Pride 3038
Connealy Frontline #
V D A R Lucy 666
TC Stockman #
TC Pride 0014
Premier Chairman 6011A #
Landmark Queenmere 512

BW	+1.1 25%
WW	+42
Milk	+27 10%
YW	+65

TC Stockman 365 #
G G QUEENMERE 9208 #
G G Queenmere 320

BW	Adj. 205/ WR	Adj. 365/ YR	% IMF/ Ratio	Adj. RE/ Ratio	Rib Fat/ Ratio	Rump Fat/ Ratio	Scrotal	Pelvic
72	738/107	1204/97	4.49/120	12.0/90	.25/83	.37/106	38	210
CW +2		Marb. +.48 20%		RE +.09		FAT -.007 15%		
SW +31.47 5%		SF +8.46		SG +31.20 15%		SB +39.00		
Scr. +.54		CED +8 20%		CEM +9 15%		SEN +2.25		
Dam's Production:			IMF Ratios 7-101			RE Ratios 7-104		
BWR 7-97			WWR 7-104			YWR 7-102		
Sons @ Auction: 3-\$3250			Daughters @ Auction: 2-\$2800			Daughters In Herd: 1-91		

- ★ An excellent bull to use on heifers and out of a Pathfinder cow. He scanned the 3rd highest IMF score of his fall contemporaries and is the 3rd high Marbling EPD bull of the auction!
- ★ Dam 9208 has been a highly productive cow that produced a herd sire for us that was later purchased by Shiloh Gennaro. Sharon Husz, Roger Vest, Mona Melton, and Blaine Behnken also selected her progeny.
- ★ Use G408 to strengthen milking ability in your cow herd. He ties as having the 2nd highest Milk EPD of the older bulls in the auction.
- ★ This bull offers a different pedigree for many of our repeat customers.



David can often be found doing repairs!



Blkcp Mary of Ellston F470
Owned by Mike Grimm
\$2400 maternal sister to lot 86

86
Bull

H&K GRIDIRON G414

Reg. 16341046 Tattoo: L/R G414 8-17-2008

G A R Grid Maker #
TC GRIDIRON 258
TC Blackbird 7049 #

G D A R Traveler 044 #
G A R Precision 2536
T C Dividend 494 #
O C C Blackbird 902D
Sitz Greatplains 9520
Woodhill Lucy 666-54K
H&K Neutron 377 X3 #
Blkcp Mary of Ellston X187

BW	+3.3
WW	+58 5%
Milk	+18
YW	+104 5%

Woodhill Statesman 54K-90N
BLKCP MARY OF ELLSTON D462
Blkcp Mary of Ellston A542 #

BW	Adj. 205/ WR	Adj. 365/ YR	% IMF/ Ratio	Adj. RE/ Ratio	Rib Fat/ Ratio	Rump Fat/ Ratio	Scrotal	Pelvic
75	685/99	1315/105	3.67/98	11.0/82	.20/67	.30/86	37.5	196
CW +8		Marb. +.28		RE +.27 30%		FAT +0 25%		
SW +26.20		SF +40.25 5%		SG +24.71		SB +45.08		
Scr. +.28		CED +3		CEM +8 25%		SEN +.07		
Dam's Production:			IMF Ratios 2-109			RE Ratios 2-87		
BWR 2-110			WWR 2-102			YWR 2-104		
Sons @ Auction: None			Daughters @ Auction: 1-\$2400			Daughters In Herd: None		
Grandam's Production:			Sons @ Auction: 1-\$2500			Daughters @ Auction: None		
BWR 3-104			WWR 3-116			YWR 3-108		

- ★ A maternal sister to G414 was a photo feature heifer in our 2009 sale selling to repeat customer Mike Grimm.
- ★ Dam D462 was the 3rd heaviest weaning weight heifer of the fall 2005 crop at 774 lbs., WR 126. She had a YW of 1064 lbs., YR 116, IMF 5.37, ratio 127, Ribeye 12.5; ratio 117!
- ★ Grandam A542 earned elite Pathfinder status after raising three of the top 10 weaning weight calves of their respective crops. Her record says it all.
- ★ We recommend G414 for use on cows.

87
Bull

H&K STATESMAN G424

Reg. 16341038 Tattoo: L/R G424 8-20-2008

Sitz Greatplains 9520
WOODHILL STATESMAN 54K-90N
Woodhill Lucy 666-54K

O C C Great Plains 943G #
Sitz Pride 3038
Connealy Frontline #
V D A R Lucy 666
S A F Neutron #
S A Queen Susan 102 #
H&K Black Fix M3
Blackbird of Ellston P213 #

BW	+1.4 30%
WW	+56 10%
Milk	+23
YW	+93 20%

S A Neutron 377 #
BLACKBIRD OF ELLSTON C412
Blackbird of Ellston T303 #

BW	Adj. 205/ WR	Adj. 365/ YR	% IMF/ Ratio	Adj. RE/ Ratio	Rib Fat/ Ratio	Rump Fat/ Ratio	Scrotal	Pelvic
74	666/97	1220/98	4.56/122	14.0/104	.15/50	.40/114	39	210
CW +11		Marb. +.43 30%		RE +.36 15%		FAT +.021		
SW +32.28 3%		SF +29.83 30%		SG +28.36 25%		SB +48.58 25%		
Scr. +.95 15%		CED +6		CEM +7		SEN -2.09		
Dam's Production:			IMF Ratios 2-113			RE Ratios 2-96		
BWR 2-102			WWR 2-100			YWR 2-103		
Sons @ Auction: None			Daughters @ Auction: 1-\$1700			Daughters In Herd: None		

- ★ Use this Statesman son on heifers if you like. Statesman has been used very successfully for many years on heifers. His EPDs cover a lot of bases.
- ★ G424 was the 2nd high scanning IMF fall bull!
- ★ Dam C412 is a big gal with big growth EPDs: WW and YW EPDs both above the top 1% of the breed.
- ★ Her performance data is second-to-none: BW 67 lbs., WW 765 lbs., WR 122, YW 1178 lbs., YR 123, IMF 4.18, ratio 103, Ribeye 13.7; ratio 111. She was the #1 heaviest weaning weight heifer of her crop!
- ★ Grandam T303 was lost before her time, but was a Pathfinder cow that recorded 5-95 BWR and 5-106 WR.



FALL BULLS





H&K CC&7 G426 – Lot 88

88 Bull
Twin w/Bull

H&K CC&7 G426

Reg. 16341042

Tattoo: L/R G426

8-22-2008

S A F Connection #
SYDGEN C C & 7
SydGen Forever Lady 4087

SVF Gdar 216 LTD #
S A F Royal Queen 5084
SydGen 1407 Corona 2016
S A F Forever Lady 8292
S A F Fame #
S A V Juana 6232
B A F Uncle Sam 3292
C J Prim Lassie 50 #

BW	+1.8
WW	+51 20%
Milk	+23
YW	+94 20%

S A V Fame 9312
PRIM LASSIE OF ELLSTON C441
C J Prim Lassie 194

BW	Adj. 205/ WR	Adj. 365/ YR	% IMF/ Ratio	Adj. RE/ Ratio	Rib Fat/ Ratio	Rump Fat/ Ratio	Scrotal	Pelvic
70	848/123	1414/114	3.43/92	14.4/107	.33/110	.33/94	44	217
CW +17 20%		Marb. +.29		RE +.41 10%		FAT +.009		
SW +27.15 30%		SF +32.78 20%		SG +24.26		SB +49.78 20%		
Scr. +1.36 3%		CED +7 30%		CEM +9 15%		SEN -3.00		
Dam's Production:			IMF Ratios 4-94			RE Ratios 4-101		
BWR 2-92			WWR 2-108			YWR 2-106		
Sons @ Auction: 1-\$4000			Daughters @ Auction: None			Daughters In Herd: None		

- ★ Twin to lot 89.
- ★ Retaining 1/3 revenue sharing semen interest.
- ★ G426 is the #1 weaning weight bull of the fall 2008 crop! He has been one of our favorites since he was born. Unfortunately, his EPDs are an average of his sire and dam because he is a twin. If his actual performance had been taken into consideration, his EPDs would be much higher. His Scrotal EPD is the 2nd high of all fall bulls selling!
- ★ Dam C441's first son was a \$4000 bull selling to repeat customer Dick Bissell. He was the 10th heaviest weaning weight bull calf of his crop.
- ★ C441 has a 366 day calving interval and is an excellent uddered cow.
- ★ When CC&7 was young, I found myself explaining who he was, and why we had paid so much for the bull. Now, when I mention CC&7 to other registered breeders, many of them tell me why they used CC&7 in their herd. He has become a household name and continues to be one of the most intriguing bulls in the ORlgen and ABS line-ups.

89 Bull
Twin w/Bull

H&K CC&7 G425

Reg. 16341031

Tattoo: L/R G425

8-22-2008

S A F Connection #
SYDGEN C C & 7
SydGen Forever Lady 4087

SVF Gdar 216 LTD #
S A F Royal Queen 5084
SydGen 1407 Corona 2016
S A F Forever Lady 8292
S A F Fame #
S A V Juana 6232
B A F Uncle Sam 3292
C J Prim Lassie 50 #

BW	+1.8
WW	+51 20%
Milk	+23
YW	+94 20%

S A V Fame 9312
PRIM LASSIE OF ELLSTON C441
C J Prim Lassie 194

BW	Adj. 205/ WR	Adj. 365/ YR	% IMF/ Ratio	Adj. RE/ Ratio	Rib Fat/ Ratio	Rump Fat/ Ratio	Scrotal	Pelvic
70	693/101	1264/102	3.78/101	13.1/98	.21/70	.26/74	40	186
CW +11		Marb. +.33		RE +.36 15%		FAT -.004 20%		
SW +27.15 30%		SF +32.78 20%		SG +27.36 25%		SB +48.39 25%		
Scr. +.74 25%		CED +7 30%		CEM +9 15%		SEN -3.00		
Dam's Production:			IMF Ratios 4-94			RE Ratios 4-101		
BWR 2-92			WWR 2-108			YWR 2-106		
Sons @ Auction: 1-\$4000			Daughters @ Auction: None			Daughters In Herd: None		

- ★ Twin to lot 88. Please refer to his footnote.

90 Bull

H&K FRICTION G474

Reg. 16341037

Tattoo: L/R G474

9-06-2008

TC Friction 3275
TC FRICTION 5130
TC Barbara 3022

Roth Famous 1006 #
PRIM LASSIE OF ELLSTON B228 #
C J Prim Lassie 275 #

Connealy Forefront #
TC Pride 8067 #
Bon View New Design 878 #
TC Barbara 1017
Famous 7001 #
Roth Formera 9199
C J Paragon 2121 303
C J Prim Lassie 50 #

BW	+1.9
WW	+51 20%
Milk	+24 30%
YW	+84

BW	Adj. 205/ WR	Adj. 365/ YR	% IMF/ Ratio	Adj. RE/ Ratio	Rib Fat/ Ratio	Rump Fat/ Ratio	Scrotal	Pelvic
71	693/101	1200/97	3.60/96	13.8/103	.21/70	.34/97	35.5	189
CW +13		Marb. +.24		RE +.22		FAT +.023		
SW +30.23 10%		SF +22.90		SG +18.99		SB +39.53		
Scr. +.56		CED +6		CEM +9 15%		SEN -.84		
Dam's Production:			IMF Ratios 4-99			RE Ratios 4-100		
BWR 4-100			WWR 4-106			YWR 4-100		
Sons @ Auction: 2-\$3150			Daughters @ Auction: None			Daughters In Herd: 1-113		
Grandam's Production:			Sons @ Auction: 1-\$3000			Daughters @ Auction: 2-\$1825		
BWR 10-101			WWR 10-105			YWR 8-104		

- ★ A rare find here—three generations of dams have achieved Pathfinder status!
- ★ B228's first son was the 3rd heaviest bull of his crop and was purchased by Verle Norris for \$3800. Arnold Maynes selected her next son.
- ★ Grandam 275 produced two Pathfinder daughters. She has a 358 day calving interval.
- ★ Use G474 on heifers or cows. He should make nice replacement daughters with good udders.

91 Bull
Twin w/Cow

H&K CC&7 G478

Reg. 16341041

Tattoo: L/R G478

9-07-2008

S A F Connection #
SYDGEN C C & 7
SydGen Forever Lady 4087

TC Gridiron 258
BLKCP EMPRESS ELLSTON C438
Blackcap Empress Ellston Z22

SVF Gdar 216 LTD #
S A F Royal Queen 5084
SydGen 1407 Corona 2016
S A F Forever Lady 8292
G A R Grid Maker #
TC Blackbird 7049 #
S A Neutron 377 #
Blackcap Empress Ellston R23

BW	+2.3
WW	+59 4%
Milk	+20
YW	+109 2%

BW	Adj. 205/ WR	Adj. 365/ YR	% IMF/ Ratio	Adj. RE/ Ratio	Rib Fat/ Ratio	Rump Fat/ Ratio	Scrotal	Pelvic
69	725/105	1306/105	4.03/108	13.9/104	.31/103	.32/91	39.5	194
CW +17 20%		Marb. +.38		RE +.61 1%		FAT +.006		
SW +26.25		SF +45.10 2%		SG +29.96 15%		SB +58.48 5%		
Scr. +.30		CED +6		CEM +8 25%		SEN -5.00		
Dam's Production:			IMF Ratios 1-108			RE Ratios 1-104		
BWR 2-105			WWR 2-101			YWR None		
Sons @ Auction: None			Daughters @ Auction: None			Daughters In Herd: None		
Grandam's Production:			Sons @ Auction: 1-\$2800			Daughters @ Auction: None		
BWR 5-99			WWR 5-103			YWR 4-104		

- ★ G478 comes in as the #1 Ribeye EPD older bull in today's auction!
- ★ Dam C438 is a beautiful Gridiron daughter that will let you pet her in the pasture. As a yearling heifer, we called her the "best heifer of the crop" Combine her great disposition with the #1 Docility EPD bull in the breed, and you should have genetic potential for superb disposition.
- ★ In 2008, C438 raised both her bull and heifer twins.
- ★ C438 scanned a 13.8" ribeye, ratio 112. Breed average for heifers is currently 9.70". Her Ribeye EPD of +.67 ranks far above the breed's top 1% of current dams of +.54. C438 ranks #13 of all Hoover-owned females for Ribeye EPD.
- ★ Grandam Z22 was the first cow to calve in the fall 2009 season. Her last 5 calves have been born between August 6th and August 17th.
- ★ Great grandam R23 served in the herd past 13 years of age, great grandam "Old Bob" served until 19 years of age.

Got Growth?
106 bulls in this sale AVERAGE a +55 WW EPD
– top 10% of the breed!



FALL BULLS





H&K Gridiron C443
Owned by Dwayne Scar
\$4200 maternal brother to lot 92



H&K CC&7 G439 – Lot 94

92 Bull H&K CC&7 G400

Reg. 16341018 Tattoo: L/R G400 8-12-2008

S A F Connection # SVF Gdar 216 LTD #
SYDGEN C C & 7 S A F Royal Queen 5084
 SydGen 1407 Corona 2016
 SydGen Forever Lady 4087 S A F Forever Lady 8292
 S S Scotch Cap S08 S S Scotch Cap S08
 S S Miss Rito 0H3 7H3 #
PRIM LASSIE OF ELLSTON T238 S A F Uncle Sam 3292
 C J Prim Lassie 194 C J Prim Lassie 50 #

BW	+1.2	30%
WW	+53	15%
Milk	+23	
YW	+90	25%

BW	Adj. 205/WR	Adj. 365/YR	% IMF/ Ratio	Adj. RE/ Ratio	Rib Fat/ Ratio	Rump Fat/ Ratio	Scrotal	Pelvic
73	795/115	1329/107	3.41/91	15.4/115	.35/117	.36/103	42.5	216
CW +18 15%		Marb. +.34		RE +.53 3%		FAT +.029		
SW +30.74 5%		SF +28.00		SG +25.19		SB +50.28 20%		
Scr. +1.30 4%		CED +6		CEM +7		SEN -1.76		
Dam's Production:			IMF Ratios 4-98			RE Ratios 4-109		
BWR 8-100			WWR 8-110			YWR 6-109		
Sons @ Auction: 2-\$3700			Daughters @ Auction: 1-\$1600			Daughters In Herd: 2-96		

- ★ G400 is the 6th heaviest weaning weight bull calf of the fall 2008 crop and turned in the 3rd biggest ribeye measurement! He has one of the biggest Scrotal EPDs of any bull in the auction.
- ★ A maternal brother was the 5th heaviest weaning weight bull calf of his crop and was a feature in our 2006 auction selling to repeat customer Dwayne Scar.
- ★ A maternal sister was the 7th heaviest weaning weight heifer of her crop and a photo feature in our 2009 auction selling to repeat customers Paul & Philip Brown.
- ★ If past performance is a prediction of future success, I would say this son of CC&7 and T238 will sire an excellent set of calves. Suitable for use on heifers or cows.
- ★ T238 is the fourth generation dam of lot 94, the 7th heaviest calf of the crop.
- ★ T238 is a very gentle fall cow that lets you pet her. Combine her disposition with CC&7's, and I'd say you will have some of the most docile genes to be found.

93 Bull H&K STATESMAN G480

Reg. 16341039 Tattoo: L/R G480 9-08-2008

Sitz Greatplains 9520 O C C Great Plains 943G #
WOODHILL STATESMAN 54K-90N Sitz Pride 3038
 Woodhill Lucy 666-54K Connealy Frontline #
 V D A R Lucy 666
 Roth Famous 1006 # Famous 7001 #
PRIM LASSIE ELLSTON B501 # Roth Formera 9199
 C J Prim Lassie 194 B A F Uncle Sam 3292
 C J Prim Lassie 50 #

BW	+1.8	
WW	+47	
Milk	+24	30%
YW	+71	

BW	Adj. 205/WR	Adj. 365/YR	% IMF/ Ratio	Adj. RE/ Ratio	Rib Fat/ Ratio	Rump Fat/ Ratio	Scrotal	Pelvic
71	658/96	1156/93	3.60/96	13.5/101	.30/100	.31/89	38.5	216
CW -1		Marb. +.32		RE +.26 30%		FAT +.032		
SW +32.74 2%		SF +12.14		SG +24.18		SB +29.50		
Scr. +1.00 10%		CED +6		CEM +8 25%		SEN +4.29		
Dam's Production:			IMF Ratios 3-96			RE Ratios 3-100		
BWR 4-95			WWR 4-103			YWR 3-94		
Sons @ Auction: 2-\$2525			Daughters @ Auction: None			Daughters In Herd: None		

- ★ Sire Statesman epitomizes the traits emphasized in the \$W index by having the 29th high \$W in the breed among 22,000+ sires!
- ★ Full brothers have sold to Cort Jaeschke and Mike Frame. Another full brother was the 9th heaviest bull calf of his crop and injured prior to yearling time.
- ★ Dam B501 is a moderate framed, easy fleshing, good uddered, beautiful cow that has earned elite Pathfinder status and helped make her sire a Pathfinder sire. She is the kind of cow you wish you had hundreds of!
- ★ F480 comes from the same cow family as lots 88, 89, 90, 92 and 94.

94 Bull H&K CC&7 G439

Reg. 16341045 Tattoo: L/R G439 8-26-2008

S A F Connection # SVF Gdar 216 LTD #
SYDGEN C C & 7 S A F Royal Queen 5084
 SydGen 1407 Corona 2016
 SydGen Forever Lady 4087 S A F Forever Lady 8292
 LaGrand 338 Right Time 3404 Hyline Right Time 338 #
PRIM LASSIE OF ELLSTON D406 Andora Gammer 9023
 Prim Lassie of Ellston A534 S A V Fame 9312
 Prim Lassie of Ellston X309

BW	+2.1	
WW	+61	2%
Milk	+27	10%
YW	+110	2%

BW	Adj. 205/WR	Adj. 365/YR	% IMF/ Ratio	Adj. RE/ Ratio	Rib Fat/ Ratio	Rump Fat/ Ratio	Scrotal	Pelvic
71	792/115	1368/110	3.79/101	14.3/107	.34/113	.28/80	47	202
CW +20 10%		Marb. +.38		RE +.38 15%		FAT +.020		
SW +29.09 15%		SF +45.34 2%		SG +25.27		SB +55.60 10%		
Scr. +1.30 4%		CED +6		CEM +7		SEN -11.77		
Dam's Production:			IMF Ratios 2-98			RE Ratios 2-102		
BWR 2-101			WWR 2-115			YWR 2-110		
Sons @ Auction: 1-\$4500			Daughters @ Auction: None			Daughters In Herd: None		
Grandam's Production:			Sons @ Auction: 1-\$2100			Daughters @ Auction: None		
BWR 5-97			WWR 5-97			YWR 3-101		

- ★ Retaining 1/3 revenue sharing semen interest.
- ★ G439 is the 7th heaviest weaning weight bull calf of the fall 2008 crop! This was no mistake—his maternal brother was the 4th heaviest bull of his crop and was purchased by repeat customer Rick Ellsworth for \$4500. Rick knows how to pick high quality bulls.
- ★ Dam D406 scanned a 5.08 IMF, ratio 120. D406 has a cute spiked topknot on her head—you can recognize her halfway across the pasture!
- ★ D406 is the 12th high \$W Hoover-owned female among 625 females and is in the top cows of the breed for this index.
- ★ Both dam and grandam are moderate framed cows that wean a huge portion of their body weight. Efficient? Absolutely.
- ★ Fourth generation dam T238 (off the pedigree) is the dam of lot 92.
- ★ G439 is quite possibly one of the best well-rounded bulls of the auction. He has the 4th high WW and YW EPDs of the fall bulls, ties as the 3rd biggest Scrotal EPD, and ties as the 2nd high Milk EPD fall bull.



Proof that America's #1 Docility Angus Bull can live up to his title, Tyler Simmons from Molino, Florida pets CC&7 at the 2009 SydGen sale!



FALL BULLS



95
Bull

H&K CC&7 G421

Reg. 16341022

Tattoo: L/R G421

8-19-2008

S A F Connection #
SYDGEN C C & 7
SydGen Forever Lady 4087

S A Neutron 377 #
BLKCP EMPRESS ELLSTON X275 #
Blkcp Empress Ellston T250 #

SVF Gdar 216 LTD #
S A F Royal Queen 5084
SydGen 1407 Corona 2016
S A F Forever Lady 8292
S A F Neutron #
S A Queen Susan 102 #
R F Partners Ambush 38C6
Blkcp Empress Ellston R235

BW	+2.0
WW	+54 10%
Milk	+22
YW	+96 15%

BW	Adj. 205/WR	Adj. 365/YR	% IMF/ Ratio	Adj. RE/ Ratio	Rib Fat/ Ratio	Rump Fat/ Ratio	Scrotal	Pelvic
71	707/103	1246/100	2.99/80	14.4/107	.39/130	.40/114	38.5	196
CW +16 25%		Marb. +.23		RE +.47 5%		FAT +.024		
SW +28.00 25%		SF +33.62 15%		SG +21.23		SB +46.13		
Scr. +.94 15%		CED +6		CEM +8 25%		SEN -2.71		
Dam's Production:			IMF Ratios 7-91			RE Ratios 7-98		
BWR 7-101			WWR 7-105			YWR 7-99		
Sons @ Auction: 1-\$2600			Daughters @ Auction: 3-\$1250			Daughters In Herd: 1-99		
Grandam's Production:			Sons @ Auction: 3-\$3200			Daughters @ Auction: 2-\$1450		
BWR 8-100			WWR 8-109			YWR 5-100		

- ★ Dam X275 has earned Pathfinder status for her regular calving interval of 355 days and top performing calves. Her first bull was the #1 weaning weight bull calf of his crop at 817 lbs., WR 121. He sold to repeat customer Trent Mayer.
- ★ G421 has a nice set of well-balanced EPDs and could be used on heifers or cows.
- ★ G421 has 7 Pathfinders in his pedigree (including dam and grandam), indicating the potential to make superior daughters.

96
Bull

H&K CC&7 G432

Reg. 16341036

Tattoo: L/R G432

8-23-2008

S A F Connection #
SYDGEN C C & 7
SydGen Forever Lady 4087

S A Neutron 44
BLKCP EMPRESS ELLSTON R235
Blackcap Empress Thymac

SVF Gdar 216 LTD #
S A F Royal Queen 5084
SydGen 1407 Corona 2016
S A F Forever Lady 8292
S A F Neutron #
S A Erica 205 #
Mid Iowa Skyliner 59S
Blackcap Empress Thymac A157

BW	+2.0
WW	+54 10%
Milk	+20
YW	+98 10%

BW	Adj. 205/WR	Adj. 365/YR	% IMF/ Ratio	Adj. RE/ Ratio	Rib Fat/ Ratio	Rump Fat/ Ratio	Scrotal	Pelvic
75	711/103	1365/109	3.51/94	13.6/101	.30/100	.35/100	39	217
CW +20 10%		Marb. +.28		RE +.35 15%		FAT +.016		
SW +26.90		SF +35.66 15%		SG +21.82		SB +49.98 20%		
Scr. +.84 20%		CED +4		CEM +6		SEN -1.52		
Dam's Production:			IMF Ratios 6-92			RE Ratios 6-107		
BWR 11-101			WWR 11-100			YWR 9-104		
Sons @ Auction: 6-\$2950			Daughters @ Auction: None			Daughters In Herd: 2-106		

- ★ All indicators point to profits on this bull.
- ★ A big scrotal bull with a calving ease head. Use him on heifers or cows.
- ★ Dam R235 maintains a 363 day calving interval on 11 calves! No fertility problems here! She is one we count on to have a good calf every year.
- ★ R235's first daughter has achieved Pathfinder status and is the grandam of lot 95 and great grandam of lot 97. Put these similar pedigreed bulls lots 95, 96 and 97 together and cover a large pasture of cows!
- ★ R235's sons have been purchased by Dennis Faust, Rich Elmer, Ed Smith, Tom Carson, Loren Parkhurst, and Rod Horn.



Barb brought home 28 ribbons from cookies she exhibited in the baking competitions at the 2009 Iowa State Fair including two 3rd Overall honors in the Jello-O desserts competition and the Grandma's Molasses Munchies contest.

97
Bull

H&K CC&7 G452

Reg. 16341040

Tattoo: L/R G452

8-30-2008

S A F Connection #
SYDGEN C C & 7
SydGen Forever Lady 4087

Roth Famous 1006 #
BLKCP EMPRESS ELLSTON B513
Blkcp Empress Ellston X275 #

SVF Gdar 216 LTD #
S A F Royal Queen 5084
SydGen 1407 Corona 2016
S A F Forever Lady 8292
Famous 7001 #
Roth Formera 9199
S A Neutron 377 #
Blkcp Empress Ellston T250 #

BW	+1.9
WW	+62 2%
Milk	+20
YW	+112 1%

BW	Adj. 205/WR	Adj. 365/YR	% IMF/ Ratio	Adj. RE/ Ratio	Rib Fat/ Ratio	Rump Fat/ Ratio	Scrotal	Pelvic
71	726/105	1352/108	3.56/95	16.0/119	.33/110	.32/91	44	188
CW +22		Marb. +.37		RE +.55 2%		FAT -.003 20%		
SW +28.15 20%		SF +47.06 1%		SG +28.99 20%		SB +61.03 4%		
Scr. +1.71 1%		CED +7 30%		CEM +9 15%		SEN -5.96		
Dam's Production:			IMF Ratios 3-112			RE Ratios 3-104		
BWR 4-94			WWR 4-99			YWR 3-101		
Sons @ Auction: None			Daughters @ Auction: 1-\$1000			Daughters In Herd: 1-106		
Grandam's Production:			Sons @ Auction: 1-\$2600			Daughters @ Auction: 3-\$1250		
BWR 7-101			WWR 7-105			YWR 7-99		

- ★ Retaining 1/3 revenue sharing semen interest.
- ★ One of my top picks of the CC&7 fall bulls, and he is a favorite of the visitors that have come to the farm in December. Typical of the CC&7 progeny, he packs on the meat and muscle and has a great disposition.
- ★ Here stands the #1 scanning ribeye bull of the fall crop with a 16.0" ribeye! Breed average for yearling bulls is 12.47." G452 has the second biggest Ribeye EPD of the older bulls selling.
- ★ G452 went from a 71 lb. birth weight to a 726 lb. weaning weight and is a nice looking bull with tremendous EPDs. This bull rises to the top in three categories among his fall contemporaries: #1 WW EPD, #1 YW EPD, and #1 Scrotal EPD!
- ★ Big scrotal bulls are stacked in the pedigree—CC&7, Connection, 1006 and 377 are all above a +1.0 Scrotal EPD! These four bulls are all in the top 1-10% of the breed for Scrotal EPD. This helped earn G452 the biggest Scrotal EPD of the auction!
- ★ Dam B513 is a moderate framed, great uddered cow with a 343 day calving interval. Pathfinder grandam X275 is the dam of lot 95. Read more about her in this footnote.
- ★ B513's daughter (and maternal sister to G452) is the #1 \$W Hoover-owned female at +45.92 which ranks her #4 among 306,159 current Angus dams! It's pretty impressive to receive the "Top 150" sorts from the AAA, and have a cow that was bred, born, raised, and in production on your operation be listed on the first page!
- ★ Go back 13 generations of cows in this pedigree, and you will find the original "Blackcap Empress Ellston" cow born on a December day in 1944—exactly 65 years to the day of when I am writing this footnote. Walt Hoover might not understand all the EPDs and performance measures in this catalog, but he would appreciate this bull's thickness and his quality cow family.

98
Bull

H&K GRIDIRON G488

Reg. 16341025

Tattoo: L/R G488

9-14-2008

G A R Grid Maker #
TC GRIDIRON 258
TC Blackbird 7049 #

S A Neutron 377 #
MISS BLACKCAP ELLSTON B4
Miss Blackcap Ellston R127 #

G D A R Traveler 044 #
G A R Precision 2536
T C Dividend 494 #
O C C Blackbird 902D
S A F Neutron #
S A Queen Susan 102 #
Bon View Paragon 2121 #
Thymac Miss Blackcap X193

BW	+3.3
WW	+56 10%
Milk	+14
YW	+100 10%

BW	Adj. 205/WR	Adj. 365/YR	% IMF/ Ratio	Adj. RE/ Ratio	Rib Fat/ Ratio	Rump Fat/ Ratio	Scrotal	Pelvic
74	668/97	1244/100	3.23/86	12.4/93	.26/87	.27/77	33.5	202
CW +13		Marb. +.11		RE +.39 10%		FAT -.001 25%		
SW +24.06		SF +36.91 10%		SG +18.24		SB +41.75		
Scr. +.24		CED +4		CEM +8 25%		SEN +4.07		
Dam's Production:			IMF Ratios 2-102			RE Ratios 2-96		
BWR 4-98			WWR 4-97			YWR 3-103		
Sons @ Auction: None			Daughters @ Auction: None			Daughters In Herd: 1-104		

- ★ One of 5 Gridiron fall bulls to sell.
- ★ Nine Pathfinders in G488's pedigree indicate superior cow power. Of the top 25 AI sires in the breed for the 2009 year, only three of these bulls have more than 9 Pathfinders in their pedigrees.
- ★ Dam B4 was the 6th heaviest adjusted weaning weight heifer of her crop, and enjoys being petted.
- ★ Pathfinder grandam R127 produced two feature daughters in past production sales.



FALL BULLS





H&K CC&7 G435 – Lot 99

99 Bull

H&K CC&7 G435

Reg. 16341028 Tattoo: L/R G435 8-24-2008

S A F Connection #
SYDGEN C C & 7
SydGen Forever Lady 4087

Roth Famous 1006 #
BLKCP EMPRESS ELLSTON C464
Blkcp Empress Ellston A547

SVF Gdar 216 LTD #
S A F Royal Queen 5084
SydGen 1407 Corona 2016
S A F Forever Lady 8292
Famous 7001 #
Roth Formera 9199
S A Neutron 377 #
Blkcp Empress Ellston V301

BW	+2.6
WW	+62 2%
Milk	+20
YW	+111 1%

BW	Adj. 205/WR	Adj. 365/YR	% IMF/ Ratio	Adj. RE/ Ratio	Rib Fat/ Ratio	Rump Fat/ Ratio	Scrotal	Pelvic
73	740/107	1326/106	3.55/94	12.2/91	.27/90	.34/97	39	215
CW	+21 10%	Marb. +.40	RE	+24	FAT	+0 25%		
\$W	+27.02 30%	\$F +45.99 2%	\$G	+26.15 30%	\$B	+57.47 10%		
Scr.	+1.22 5%	CED +6	CEM	+8 25%	SEN	-5.64		
Dam's Production:			IMF Ratios 2-110			RE Ratios 2-95		
BWR 3-103			WWR 3-104			YWR 2-103		
Sons @ Auction: None			Daughters @ Auction: None			Daughters In Herd: None		

- ★ Retaining 1/3 revenue sharing semen interest.
- ★ G435 ties as the #1 WW EPD fall bull and is the 3rd high YW EPD fall bull.
- ★ A gentle bull, typical of most all CC&7 sons. He is a stout rascal and easily surfaces to the top of the pen. If you want to put muscle back in cattle, a CC&7 son out of a Famous dam can't be beat.
- ★ This bull will be one to keep your eye on. He offers great EPDs, as he is backed by three powerful growth bulls: CC&7, Famous, and 377.
- ★ Dam C464 has a superb udder—small teats placed squarely on her udder. She has a 362 day calving interval on her 3 calves.

100 Bull

H&K CC&7 G440

Reg. 16341024 Tattoo: L/R G440 8-26-2008

S A F Connection #
SYDGEN C C & 7
SydGen Forever Lady 4087

TC Gridiron 258
ELLSTON PRIDE C410
Ellston Pride Z340 #

SVF Gdar 216 LTD #
S A F Royal Queen 5084
SydGen 1407 Corona 2016
S A F Forever Lady 8292
G A R Grid Maker #
TC Blackbird 7049 #
S A Neutron 377 #
Ellston Pride P199 #

BW	+2.5
WW	+60 3%
Milk	+19
YW	+112 1%

BW	Adj. 205/WR	Adj. 365/YR	% IMF/ Ratio	Adj. RE/ Ratio	Rib Fat/ Ratio	Rump Fat/ Ratio	Scrotal	Pelvic
73	725/105	1328/107	3.88/104	13.2/99	.37/123	.40/114	40	223
CW	+18 15%	Marb. +.37	RE	+48 5%	FAT	+0.22		
\$W	+25.29	\$F +47.89 1%	\$G	+26.33 30%	\$B	+56.22 10%		
Scr.	+1.02 10%	CED +5	CEM	+8 25%	SEN	-5.06		
Dam's Production:			IMF Ratios 2-106			RE Ratios 2-92		
BWR 3-102			WWR 3-97			YWR 2-107		
Sons @ Auction: 1-\$3100			Daughters @ Auction: None			Daughters In Herd: None		
Grandam's Production:			Sons @ Auction: 2-\$3350			Daughters @ Auction: 1-\$1400		
BWR 5-102			WWR 5-102			YWR 4-104		

- ★ G440 is a 7/8 brother to the \$47,500 Hoover Dam bull!
- ★ This is another high performing CC&7 son, look at his growth EPDs. He ties as the #1 YW EPD fall bull! Recommended for larger heifers or cows.
- ★ A maternal brother to G440 was purchased by repeat customer Marc Feller for \$3100.
- ★ Grandam Z340 achieved Pathfinder status for her regular calving interval and solid progeny performance.

101 Bull

H&K CC&7 G446

Reg. 16341023 Tattoo: L/R G446 8-29-2008

S A F Connection #
SYDGEN C C & 7
SydGen Forever Lady 4087

S A Neutron 377 #
BLKCP EMPRESS ELLSTON Z345 #
Blkcp Empress Ellston P196 #

SVF Gdar 216 LTD #
S A F Royal Queen 5084
SydGen 1407 Corona 2016
S A F Forever Lady 8292
S A F Neutron #
S A Queen Susan 102 #
S A F Fix 8178 #
Blackcap Empress Ellston G21

BW	+1.9
WW	+56 10%
Milk	+23
YW	+108 2%

BW	Adj. 205/WR	Adj. 365/YR	% IMF/ Ratio	Adj. RE/ Ratio	Rib Fat/ Ratio	Rump Fat/ Ratio	Scrotal	Pelvic
72	772/112	1348/108	3.55/95	12.6/94	.45/150	.42/120	40.5	188
CW	+28 1%	Marb. +.34	RE	+37 15%	FAT	+0.34		
\$W	+26.02	\$F +45.28 2%	\$G	+20.35	\$B	+54.90 10%		
Scr.	+81 20%	CED +6	CEM	+8 25%	SEN	-7.40		
Dam's Production:			IMF Ratios 5-97			RE Ratios 5-104		
BWR 6-99			WWR 6-108			YWR 5-111		
Sons @ Auction: 4-\$3750			Daughters @ Auction: None			Daughters In Herd: None		
Grandam's Production:			Sons @ Auction: 2-\$1800			Daughters @ Auction: 4-\$1800		
BWR 11-101			WWR 11-104			YWR 9-107		

- ★ G446 is the 8th heaviest weaning weight bull of his crop! This bull has loads of growth potential. He is a darn good bull loaded with muscle and sired by the bull with the 14th highest YW EPD in the breed, CC&7.
- ★ It doesn't get much better than this—Pathfinder dam AND grandam. Eight total Pathfinders in this bull's pedigree. Dam Z345 has a 362 day calving interval and grandam P196 has a 359 day calving interval on her progeny!
- ★ Repeat customers Roger Tibben, Roy & Rick Reno, Roger Cerven, and Bruce Crumpacker have purchased Z345's sons. Z345 has yet to give us a replacement daughter.

102 Bull

H&K CC&7 G445

Reg. 16341021 Tattoo: L/R G445 8-29-2008

S A F Connection #
SYDGEN C C & 7
SydGen Forever Lady 4087

TC Stockman 365 #
G G LORA 9231
G G Lora 430

SVF Gdar 216 LTD #
S A F Royal Queen 5084
SydGen 1407 Corona 2016
S A F Forever Lady 8292
TC Stockman #
TC Pride 0014
N Bar Emulation EXT #
G G Lora 220

BW	+2.2
WW	+47
Milk	+24 30%
YW	+87

BW	Adj. 205/WR	Adj. 365/YR	% IMF/ Ratio	Adj. RE/ Ratio	Rib Fat/ Ratio	Rump Fat/ Ratio	Scrotal	Pelvic
75	700/102	1226/99	5.52/148	12.5/93	.21/70	.24/69	41	202
CW	+15 30%	Marb. +.64 10%	RE	+32 20%	FAT	-.010 15%		
\$W	+25.87	\$F +27.34	\$G	+36.17 3%	\$B	+59.10 5%		
Scr.	+86 20%	CED +7 30%	CEM	+9 15%	SEN	-1.75		
Dam's Production:			IMF Ratios 4-120			RE Ratios 4-102		
BWR 5-100			WWR 5-108			YWR 4-102		
Sons @ Auction: 2-\$4500			Daughters @ Auction: None			Daughters In Herd: 1-94		

- ★ G445 is the #1 IMF scanning bull of his fall contemporaries! He ties with lot 68 as the #1 Marbling EPD bull of the auction!
- ★ A new pedigree for many of our repeat customers.
- ★ A maternal brother was the #1 weaning weight fall bull of the 2004 crop and was purchased by repeat customer Ed Claycomb. For our 80th birthday bash in 2008, Ed's wife Sharon submitted a recipe for our cookbook named, "Missouri Cornbread Salad". It was very unique and won the "Most Creative" award. Congratulations Sharon!

The American Angus Association now runs National Cattle Evaluation Carcass EPDs every week, thus allowing new records to be included in the database and published every Friday. New Carcass EPDs will come online every Friday morning at the AAA website. Non-parent animals with no data being submitted will see very little EPD change on a weekly basis. Sires that have progeny data being submitted or young animals with data submitted will see larger changes. This catalog has the Spring 2010 NCE EPDs and does not reflect weekly updates. Thus, slight variations will occur in the printed values and what you see when you visit the AAA's EPD/Pedigree lookup page.



FALL BULLS



103
Bull**H&K CC&7 G463**

Reg. 16341032

Tattoo: L/R G463

9-03-2008

S A F Connection #
SYDGEN C C & 7
SydGen Forever Lady 4087S A Bando 598-1309
BLACKBIRD OF ELLSTON A674
Blackbird of Thymac V31SVF Gdar 216 LTD #
S A F Royal Queen 5084
SydGen 1407 Corona 2016
S A F Forever Lady 8292
Bon View Bando 598 #
S A Wetonkas Erica 1317
Leos C J Brutus 4092
Blackbird of Thymac B52

BW	+2.1
WW	+49 30%
Milk	+19
YW	+93 20%

BW	Adj. 205/WR	Adj. 365/YR	% IMF/ Ratio	Adj. RE/ Ratio	Rib Fat/ Ratio	Rump Fat/ Ratio	Scrotal	Pelvic
76	696/101	1267/102	3.82/102	13.1/98	.20/67	.28/80	39.5	216
CW	+16 25%	Marb.	+35	RE	+18	FAT	-.021	4%
SW	+24.49	\$F	+32.55 20%	\$G	+26.89 30%	\$B	+51.50	20%
Scr.	+50	CED	+4	CEM	+7	\$EN	+93	
Dam's Production:		IMF Ratios 5-95			RE Ratios 5-94			
BWR 5-99		WWR 5-103			YWR 5-103			
Sons @ Auction: 2-\$2975		Daughters @ Auction: None			Daughters In Herd: 1-108			

- ★ Another son of the #1 Docility bull in the breed! Docility EPDs are derived from yearling temperament scores submitted by Angus producers.
- ★ Dam A674 maintains a 364 day calving interval. Reproduction is one of the most important economic impact areas in a cow-calf operation. Combine A674's fertility along with CC&7's fertility, and this bull should be as good as they come. Talking about fertility and docility, CC&7 is one of only 12 Angus sires to have both a Docility EPD and a Heifer Pregnancy EPD in the top 10% of the breed!
- ★ Roger and Marvin Kester and Randall Jeffries selected A674's first two sons to come to auction.

104
Bull**H&K STATESMAN G496**

Reg. 16341029

Tattoo: L/R G496

10-01-2008

Sitz Greatplains 9520
WOODHILL STATESMAN 54K-90N
Woodhill Lucy 666-54KH&K Neutron 377 V225
KEYMURA OF ELLSTON A660 #
Keymura of Ellston T288O C C Great Plains 943G #
Sitz Pride 3038
Connealy Frontline #
V D A R Lucy 666
S A Neutron 377 #
Elbamere Queen F4
H&K Ferragamo J313
Thymac Keymura Z27

BW	+3 15%
WW	+56 10%
Milk	+20
YW	+85

BW	Adj. 205/WR	Adj. 365/YR	% IMF/ Ratio	Adj. RE/ Ratio	Rib Fat/ Ratio	Rump Fat/ Ratio	Scrotal	Pelvic
72	760/110	1272/102	4.41/118	12.0/90	.34/113	.52/149	35.5	210
CW	+8	Marb.	+42 30%	RE	+07	FAT	+062	
SW	+35.05 1%	\$F	+22.00	\$G	+18.77	\$B	+34.78	
Scr.	+27	CED	+5	CEM	+6	\$EN	+3.01	
Dam's Production:		IMF Ratios 4-126			RE Ratios 4-97			
BWR 5-102		WWR 5-104			YWR 4-105			
Sons @ Auction: 2-\$3425		Daughters @ Auction: 1-\$1800			Daughters In Herd: None			

- ★ G496 was the 10th heaviest weaning weight bull of his crop as well as the 4th highest IMF scanning bull! Use him on heifers or cows. Statesman sons have been the calving ease choices for many customers in past auctions. Statesman progeny are easy keeping.
- ★ Pathfinder dam A660 is the 6th top IMF ratio cow of the Hoover herd with 4-126 IMF ratio!
- ★ Sons have sold to Loren Parkhurst and Mike Mercer for \$4100 and \$2750, respectively.
- ★ G496 has a \$W index above the top 1% of the breed. For more information on \$W, visit the Education Center at www.hooverangus.com.



John & Barb
celebrate their
60th wedding anniversary
in 2009!

105
Bull**H&K FRICTION G501**

Reg. 16341043

Tattoo: L/R G501

10-06-2008

TC Friction 3275
TC FRICTION 5130
TC Barbara 3022LaGrand Future Direction3368
BLACKBIRD OF ELLSTON E408
Blackbird of Ellston T257 #Connealy Forefront #
TC Pride 8067 #
Bon View New Design 878 #
TC Barbara 1017
C A Future Direction 5321 #
Roth Miss Countess 1508
R F Partners Ambush 38C6
Blackbird of Ellston R247 #

BW	+1.9
WW	+50 25%
Milk	+26 15%
YW	+80

BW	Adj. 205/WR	Adj. 365/YR	% IMF/ Ratio	Adj. RE/ Ratio	Rib Fat/ Ratio	Rump Fat/ Ratio	Scrotal	Pelvic
70	689/100	1206/97	3.94/105	12.7/95	.31/103	.30/86	38	165
CW	+10	Marb.	+33	RE	+06	FAT	+023	
SW	+31.09 5%	\$F	+19.44	\$G	+20.75	\$B	+38.11	
Scr.	+49	CED	+6	CEM	+8 25%	\$EN	-1.48	
Dam's Production:		IMF Ratios 1-105			RE Ratios 1-95			
BWR 1-103		WWR 1-100			YWR 1-97			
Sons @ Auction: None		Daughters @ Auction: None			Daughters In Herd: None			
Grandam's Production:		Sons @ Auction: 3-\$2850			Daughters @ Auction: None			
BWR 8-104		WWR 8-108			YWR 7-103			

- ★ G501 can be used on heifers. Friction sons are popular calving ease bulls—in last year's auction, the Friction fall bulls averaged \$4722, topping out at \$6250 and \$5750.
- ★ Dam E408 was a first calf heifer with G501 stemming from a highly productive cow family. Both grandam and great grandam are Pathfinder cows. T257's sons have been selected by Gordon Houser, Cort Jaeschke, and Mark Lents.
- ★ E408, T257, and R247 all have nice udders, and I would expect G501's daughters to be the same. He can add milking ability.

106
Bull**H&K FRICTION G518**

Reg. 16341030

Tattoo: L/R G518

11-03-2008

TC Friction 3275
TC FRICTION 5130
TC Barbara 3022LaGrand Future Direction3368
BLUEBLOOD LADY ELLSTON E508
Blueblood Lady Ellston R159 #Connealy Forefront #
TC Pride 8067 #
Bon View New Design 878 #
TC Barbara 1017
C A Future Direction 5321 #
Roth Miss Countess 1508
S A Neutron 44
Blueblood Lady Ellston L727 #

BW	+2.2
WW	+51 20%
Milk	+24 30%
YW	+85

BW	Adj. 205/WR	Adj. 365/YR	% IMF/ Ratio	Adj. RE/ Ratio	Rib Fat/ Ratio	Rump Fat/ Ratio	Scrotal	Pelvic
67	691/100	1221/98	3.71/99	13.0/97	.21/70	.26/74	37.5	200
CW	+16 25%	Marb.	+33	RE	+13	FAT	+012	
SW	+29.31 15%	\$F	+23.87	\$G	+21.86	\$B	+44.80	
Scr.	+67 30%	CED	+5	CEM	+8 25%	\$EN	-1.14	
Dam's Production:		IMF Ratios 1-99			RE Ratios 1-97			
BWR 1-101		WWR 1-100			YWR 1-98			
Sons @ Auction: None		Daughters @ Auction: None			Daughters In Herd: None			

- ★ Pair up these two youngest fall bulls, lots 105 & 106 that are ¾ brothers to run with a pasture of cows or heifers. They will produce a similar set of calves and replacement daughters. These younger bulls don't show the power and performance of their older contemporaries, and this will make them bargains sale day.
- ★ Dam E508 was a first calf heifer with G518. E508 weaned at 649 lbs., WR 105, YW 955 lbs., YR 107. She scanned a 5.29 IMF to ratio 136 to be one of the top IMF heifers of her crop.
- ★ Pathfinder grandam R159 has been retired from the herd, but recorded 9-114 WR and 8-110 YR. She was an easy fleshing cow. One Pathfinder daughter works in the herd.



David & Joy
celebrate their
30th wedding anniversary
in 2009!

**FALL BULLS**