

Any open heifer purchased in this sale that is named Champion Angus Heifer at a county fair or larger show will receive \$100 buying credit in our 2009 sale. Buyer must supply a photo of the animal, only one credit per animal.

182 **BLACKCAP EMPRESS ELLSTON G81**
Open Heifer Reg. 16122463 Tattoo: L/R G81 2-08-2008

G A R Grid Maker #	G D A R Traveler 044 #	BW +2.2
TC GRIDIRON 258	G A R Precision 2536	
TC Blackbird 7049 #	T C Dividend 494 #	WW +60 2%
K L B Hi Flyer 76RE #	O C C Blackbird 902D	Milk +17
BLKCP EMPRESS ELLSTON X281	Steele Hi Flyer C12	YW +93 15%
Blkcp Empress Ellston R235	Miss Blackcap Ellston M79 #	
	S A Neutron 44	
	Blackcap Empress Thymac	

BW 65		Adj. 205 656		WR 111	
Adj. 365/YR	%IMF/Ratio	Adj. RE/Ratio	Rib Fat/Ratio	Rump Fat/Ratio	
CW +8	Marb. -.02	RE +.27 25%	FAT +.005		
\$W +33.10 1%	\$F +28.29 30%	\$G +11.22	\$B +28.63		
Scr. +.55	CEM +5	CEM +8 25%	\$EN +4.45		
Dam's Production:		IMF Ratios 3-87		RE Ratios 3-103	
BWR 6-101		WWR 6-103		YWR 3-104	
Sons @ Auction: 3-\$4100		Daughters @ Auction: None		Daughters In Herd: None	
Grandam's Production:		Sons @ Auction: 5-\$2875		Daughters @ Auction: None	
BWR 10-101		WWR 10-100		YWR 8-103	

- ★ A high performance Gridiron daughter here! She offers a little more frame (she gets it from her mom) than some Gridiron daughters.
- ★ Dam X281 has produced a \$5000 son, a \$4000 son, and a \$3300 son. Need I say more? Michael Murphy, Loren Parkhurst, and Carl Stephens were the top bidders on those bulls. Carl's bull was the 4th top weaning calf of his crop, Michael's the 9th.
- ★ Grandam R235 records a 364 day calving interval on her 10 progeny. Her 5-108 ribeye ratio indicate true muscle. R235's first daughter achieved Pathfinder status.
- ★ Last January, Dennis Faust came to look at our sale bulls. He wanted to see the dams of his top picks, so we drove through several pastures to see the momma cows. Dennis approved of R235 and paid \$4500 for her son!
- ★ We applaud all customers who come view the sale offering prior to the sale. We can help you on a one-on-one basis when you visit the farm prior to the sale.
- ★ G81 has some white on her udder. Her \$Weaned Calf Value (\$W) is above the top 1% of the breed!

Disgusted with Angus cattle that are all EPDs and no phenotypy? We will give you both!



We welcome Dustin Carter as a second auctioneer for our 2009 auction! Dustin was a member of the Senior Champion Team Sales Team at the 2004 National Junior Angus Show. This Iowa team sold a bull to the judges named H&K Neutron 377 B2. Bet you can't guess who another member of Dustin's team was???

Good News

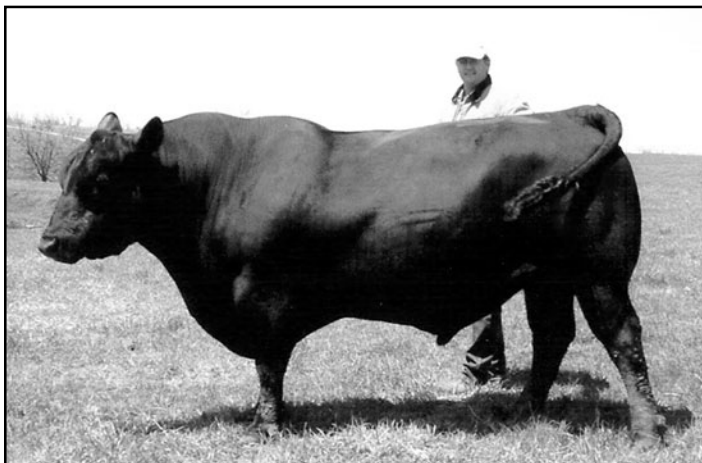
- From 1978 through 2007, CAB® packers paid producers nearly \$250 million in direct grid premiums related to CAB® acceptance, 95% of it in the last eight years!
- In a time of a declining national cow herd (1996-2007), Angus registrations increased by 127,169—a testament to Angus demand. —2008 American Angus Association Annual Report
- The following is an excerpt from “Marbling: Good for You” in the October 2008 *Angus Journal*. “There’s a health benefit to eating well-marbled beef, compared to the lower-grading kind,” Smith says. More marbling means more oleic acid, which means less of the potentially harmful saturated and trans-fatty acids that have given beef a black eye. Research conducted by Smith calls into question the most popular nutritional advice. Dietitians say to choose USDA Select over higher-marbling beef to cut back on fat. However, Smith showed Select ground beef had the worst ratio of healthy monounsaturated-to-saturated fatty acids at 0.75. Thanks to marbling, Prime beef had a ratio of 1.33.

181 **BLUEBLOOD LADY ELLSTON G62**
Open Heifer Reg. 16122457 Tattoo: L/R G62 2-07-2008

S A F Neutron #	V D A R New Trend 315 #	BW +5.7
S A NEUTRON 377 #	S A F Duchess 9029	
S A Queen Susan 102 #	S A F Power Fix #	WW +48 30%
Bon View Paragon 2121 #	S A Queen Susan 910	Milk +13
BLUEBLOOD LADY ELLSTON V97	Bon View Paragon 2108	YW +87 30%
Blueblood Lady Ellston L727 #	Bon View Erica 69	
	Eileenmere Lad 205	
	Blueblood Lady Ellston F33	

BW 83		Adj. 205 595		WR 101	
Adj. 365/YR	%IMF/Ratio	Adj. RE/Ratio	Rib Fat/Ratio	Rump Fat/Ratio	
CW +23 4%	Marb. +.17	RE +.41 10%	FAT +.032		
\$W +16.04	\$F +26.96	\$G +15.49	\$B +43.68 30%		
Scr. +.84 20%	CEM -5	CEM +4	\$EN +8.27 25%		
Dam's Production:		IMF Ratios 5-104		RE Ratios 5-103	
BWR 7-109		WWR 7-101		YWR 5-105	
Sons @ Auction: 4-\$3700		Daughters @ Auction: 1-\$1550		Daughters In Herd: None	
Grandam's Production:		Sons @ Auction: 3-\$3500		Daughters @ Auction: 3-\$1700	
BWR 10-103		WWR 10-112		YWR 10-110	

- ★ 7 Pathfinders are represented in this pedigree!
- ★ A full brother to G62 was the top selling bull in our 2003 auction to Bill Hargrafen. All three of G62's full brothers weaned between 750-764 lbs. This has been a really good combination!
- ★ Dam V97 is a really good cow to work with when she calves. She also has a nice udder, which is extremely beneficial during calving season!
- ★ V97 records a 362 day calving interval, indicating good fertility. Her easy fleshing ability is likely part of the reason she settles quickly each season.
- ★ V97 weaned at 717 lbs., WR 114, YW 1007 lbs., YR 107, IMF 6.11, ratio 129, ribeye 13.4", ratio 123!
- ★ A full sister to V97 was a photo feature open heifer in our 1995 auction and as a first calf heifer became the Champion Cow-Calf Pair at the Madison Co. Fair for the Dale Weeks family.
- ★ Grandam L727 has one Pathfinder daughter and one Pathfinder granddaughter working in the herd.
- ★ As reflected in her production ratios, L727 was a performance cow. Her calves were thick, stout, and carried a big ribeye—two daughters averaged a 14.6" ribeye, three sons a 15.7" ribeye. Four of her progeny were photo features in past auctions.
- ★ L727's top selling son for \$4300 went to Missouri with Thomas & Catherine Craig. Three years later, the Craig family came back to Hoover Angus and purchased the top selling bull to ever leave the farm at \$13,000.



Australian visitor Stephen Handbury pets Gridiron in the summer of 2008.



OPEN HEIFERS



183 **ELBAMERE QUEEN ELLSTON G126**
Open Heifer Reg. 16124913 Tattoo: L/R G126 2-15-2008

Sitz Greatplains 9520
WOODHILL STATESMAN 54K-90N
 Woodhill Lucy 666-54K

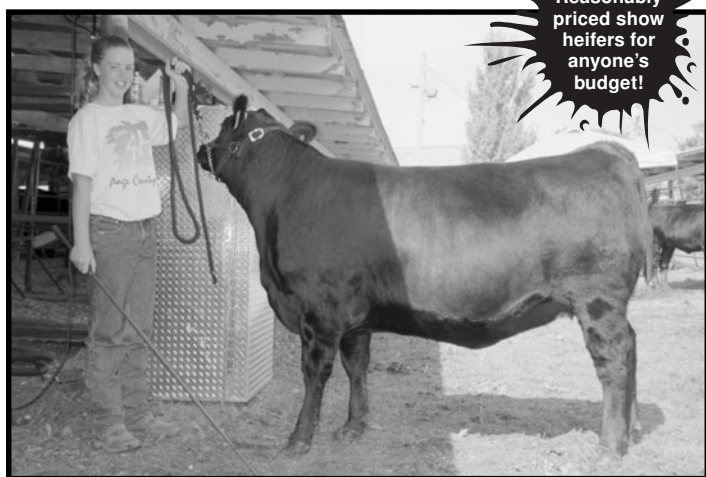
Roth Famous 1006
ELBAMERE QUEEN ELLSTON C203
 Elbamere Queen Z203 #

O C C Great Plains 943G #
 Sitz Pride 3038
 Connealy Frontline #
 V D A R Lucy 666
 Famous 7001 #
 Roth Formera 9199
 K L B Hi Flyer 76RE #
 Elbamere Queen P22

BW	+3.8
WW	+53 10%
Milk	+26 15%
YW	+87 30%

BW 75		Adj. 205 587		WR 100	
Adj. 365/YR	%IMF/Ratio	Adj. RE/Ratio	Rib Fat/Ratio	Rump Fat/Ratio	
CW +7	Marb. +.28	RE +.10	FAT +.034		
\$W +27.44 20%	\$F +25.06	\$G +18.79	\$B +34.59		
Scr. +.94 15%	CED +2	CEM +6	\$EN -3.20		
Dam's Production:		IMF Ratios 1-124		RE Ratios 1-102	
BWR 3-110		WWR 3-110		YWR 2-103	
Sons @ Auction: 2-\$2450		Daughters @ Auction: None		Daughters In Herd: None	
Grandam's Production:		Sons @ Auction: 2-\$1975		Daughters @ Auction: 1-\$2600	
BWR 5-106		WWR 5-105		YWR 4-107	

- ★ A full brother to G126 was a heck of a bull selected by repeat customer Myron Nothwehr. Because of his dam, he offered a little more frame than the typical Statesman. This bull scanned a 5.72 IMF, ratio 124, 12.4" ribeye, ratio 102.
- ★ C203's first calf was the 3rd heaviest calf of his crop at 835 lbs., WR 118! Miller Bros. Ranch of Missouri picked him from our 2008 auction.
- ★ C203 weaned at 700 lbs., WR 106, YW 1060 lbs., YR 111. Her WW EPD is above the top 1%, YW top 3%, Scrotal top 3%, and Milk top 15%!
- ★ Pathfinder grandam Z203 produced the top selling bred heifer in our 2005 auction selling to Bill Cody of Wisconsin. Bill really likes this female.
- ★ A set of bull/heifer twins ratiating 104 and 105 are not included in Z203's wean ratios listed in the boxes above. Z203 has a 363 day calving interval.
- ★ This cow family has the potential to pass on white behind the navel and on the udder. This certainly doesn't stop their growth—the #1 criteria of our customers.
- ★ Fourth generation dam L913 has produced a marvelous of a set of females! Seventeen daughter descendants work in the Hoover herd, four of which are Pathfinder. Pathfinder cows aren't good because we say they are good, they are identified by the American Angus Association with a strict set of criteria. In the 2008 report, a little over 1/2 of 1% of eligible dams across the nation achieved this elite status. C203 might achieve Pathfinder status in the 2009 report. L913's 17 daughter descendants have weaned a total of 79 calves averaging a 105 WR!
- ★ Kelsey Means' Reserve Champion Angus female at the 2008 Page County Fair was a Statesman heifer out of a Famous dam!



Reasonably priced show heifers for anyone's budget!

Congratulations to Kelsey Means for exhibiting the Reserve Champion Angus Heifer at the 2008 Page County Fair! This heifer was purchased in our 2008 sale and is a 3/4 sister to lot 183.

Of the top 14 YW EPD females owned by Hoover Angus Farm (approximately 700 cows and heifers), three come to this auction—lot 190, 112 and 177!

185 **ERICA OF ELLSTON G221**
Open Heifer Reg. 16124937 Tattoo: L/R G221 2-24-2008

Sitz Greatplains 9520
WOODHILL STATESMAN 54K-90N
 Woodhill Lucy 666-54K

S A Neutron 44
ERICA OF ELLSTON Z192
 Erica of Ellston R155 #

O C C Great Plains 943G #
 Sitz Pride 3038
 Connealy Frontline #
 V D A R Lucy 666
 S A F Neutron #
 S A Erica 205 #
 H&K Dark Star M163 #
 Shottish V047

BW	+1.5 30%
WW	+57 4%
Milk	+25 20%
YW	+85

BW 67		Adj. 205 635		WR 108	
Adj. 365/YR	%IMF/Ratio	Adj. RE/Ratio	Rib Fat/Ratio	Rump Fat/Ratio	
CW +5	Marb. +.31	RE +.06	FAT +.038		
\$W +35.44 1%	\$F +21.62	\$G +19.09	\$B +32.37		
Scr. +.66 30%	CED +7 30%	CEM +9 15%	\$EN -1.71		
Dam's Production:		IMF Ratios 3-103		RE Ratios 3-98	
BWR 4-98		WWR 4-108		YWR 3-106	
Sons @ Auction: 2-\$2200		Daughters @ Auction: None		Daughters In Herd: None	
Grandam's Production:		Sons @ Auction: 5-\$2500		Daughters @ Auction: 2-\$1600	
BWR 11-101		WWR 11-112		YWR 10-107	

- ★ G221's pedigree indicates easy keeping on both the top and bottom sides. If you don't want a cow to look like she went through the washing machine and then was tumbled dry after raising a calf, pick a heifer like this one.
- ★ G221 offers the highest \$Weaned Calf Value (\$W) of any female selling today, way above the top 1% of the breed!
- ★ G221 has marbling potential behind her—Z192 records 3-103 IMF ratio, R155 records 8-106 IMF ratio, and V047 records 3-121 IMF. Sire Statesman records over 100 progeny at 105 IMF ratio!
- ★ Dam Z192 raised the 4th heaviest heifer calf of the spring 2007 crop at 729 lbs., WR 117. This heifer will go into production this spring at Hoover Angus. Z192's first two sons were selected by Ed Claycomb and Paul Smith, both repeat customers.
- ★ Z192 weaned at 734 lbs., WR 119, YW 1052 lbs., YR 116.
- ★ Grandam R155 has come from a cow family of all-time greats.
- ★ At 12 years of age, R155 raised the 3rd heaviest WW bull calf of the 2008 crop! He sells as a feature, lot 2. R155 maintains a 363 day calving interval on 11 calves.
- ★ R155's daughter E9 (3/4 sister to Z192 and pictured on page 7) was the top selling bred heifer in our 2008 auction finding a new home in the herd of Dr. Martin Nold of Gettysburg, South Dakota. She had a gorgeous little CC&7 heifer calf. A full brother to E9 was the first calf born in 2007.
- ★ Third generation dam V047 produced four sons averaging \$5075. Her 2001 bull calf topped our 2002 auction at \$11,000 to Angus breeder Wayne James. This bull posted a 825 lb. weaning weight, WR 124, YW 1569 lbs., YR 123. He scanned off the charts with a 5.23 IMF, ratio 129, and a 16.0" ribeye, ratio 108. This bull has gone on to be the 12th high WW EPD and 18th high YW EPD current sire in the nation!

186 **ELBAMERE QUEEN ELLSTON G110**
Open Heifer Reg. 16124910 Tattoo: L/R G110 2-13-2008

C A Future Direction 5321 #
LAGRAND FUTURE DIRECTION3368
 Roth Miss Countess 1508

S A Neutron 377 #
ELBAMERE QUEEN ELLSTON C94
 Elbamere Queen V93 #

G A R Precision 1680 #
 C A Miss Power Fix 308
 Bon View Bando 598 #
 Grubbs Miss Countess 252 #
 S A F Neutron #
 S A Queen Susan 102 #
 H&K Dark Star M163 #
 Elbamere Queen N210

BW	+2.6
WW	+46
Milk	+21
YW	+81

BW 68		Adj. 205 577		WR 98	
Adj. 365/YR	%IMF/Ratio	Adj. RE/Ratio	Rib Fat/Ratio	Rump Fat/Ratio	
CW +15 25%	Marb. +.31	RE +.10	FAT +.005		
\$W +26.57 30%	\$F +21.88	\$G +21.74	\$B +43.59		
Scr. NA	CED +4	CEM +8 25%	\$EN +3.87		
Dam's Production:		IMF Ratios 1-90		RE Ratios 1-118	
BWR 3-93		WWR 3-97		YWR 1-103	
Sons @ Auction: None		Daughters @ Auction: None		Daughters In Herd: None	
Grandam's Production:		Sons @ Auction: 4-\$2775		Daughters @ Auction: 1-\$1350	
BWR 8-101		WWR 8-98		YWR 7-102	

- ★ G110 is the standout Future Direction heifer of the crop, and should make a very nice cow.
- ★ A rare find with 9 Pathfinders represented in her pedigree!
- ★ Dam C94 records a 359 day calving interval and an average birth weight of 64 pounds on her three calves.
- ★ Grandam has produced herd sires for the following customers: Dan & Mike Bruning, Darrell Wagoner, Ken Crouch, and David Cheers, all repeat customers. Her top selling son at \$4000 was a photo feature in our 2004 auction. Mark Groth purchased V93's only daughter at auction.
- ★ V93 has a 363 day calving interval and 7-103 ribeye ratio.



OPEN HEIFERS





Miss Erica Ellston G298 – Lot 187



RBM Neutron X3 192
\$10,000 herd sire
and maternal grandsire
of lot 187

187 **MISS ERICA ELLSTON G298**
Open Heifer Reg. 16124967 Tattoo: L/R G298 3-08-2008

Sitz Greatplains 9520
WOODHILL STATESMAN 54K-90N
Woodhill Lucy 666-54K

R B M Neutron X3 192
MISS ERICA ELLSTON E298
Miss Erica Ellston C375

O C C Great Plains 943G #
Sitz Pride 3038
Connealy Frontline #
V D A R Lucy 666
H&K Neutron 377 X3
Fairdale Design of I A R 736 #
Roth Famous 1006
Miss Erica Ellston V19

BW	+2.0
WW	+61 1%
Milk	+22
YW	+101 5%

BW 61		Adj. 205 641		WR 109	
Adj. 365/YR	%IMF/Ratio	Adj. RE/Ratio	Rib Fat/Ratio	Rump Fat/Ratio	
CW +11	Marb. +.32	RE +.24	30%	FAT +.036	
\$W +31.24 3%	\$F +35.95 10%	\$G +21.09		\$B +43.01	
Scr. NA	CED +6	CEM +7		\$EN -4.27	
Dam's Production:		IMF Ratios None		RE Ratios None	
BWR 1-101		WWR 1-109		YWR None	
Sons @ Auction: None		Daughters @ Auction: None		Daughters In Herd: None	
Grandam's Production:		Sons @ Auction: None		Daughters @ Auction: None	
BWR 3-104		WWR 3-96		YWR 1-119	

- ★ G298 is a moderate birth weight, high growth heifer with cow potential. Statesman daughters will remain easy fleshing when other cows get thin.
- ★ Statesman has the 49th high \$Weaned Calf Value (\$W) in the breed! This is extremely important for producers who sell their progeny after weaning time and retain replacements in the herd.
- ★ Dam E298 was the #1 WW heifer of the 2006 crop out of a first calf heifer! She had the 2nd heaviest adjusted yearling weight too! Her WW and YW EPDs shatter the top 1% of current dams, and her YW EPD is the third highest of all cows in production at Hoover Angus.
- ★ Maternal grandsire X3 192 was used naturally to breed heifers for several years. A 192 son tied as the top selling bull in the 2006 RBM Livestock production sale at \$5000. A 192 daughter raised photo feature bred heifer lot 126.
- ★ It is hard to believe that H&K Neutron 377 X3 can be in the last line of a three generation pedigree already. . . but he has certainly played an integral part in providing high growth genetics to the 8 herds he has been a part of. He is the 18th high YW EPD sire of the breed at +126!
- ★ Grandam C375 is a nice uddered cow, this coming from sire Famous whose daughters have the most uniform, excellent udders in the herd. She has a 350 day calving interval. Her Scrotal EPD of +1.23 ranks in the top 1% of the breed.
- ★ Fourth generation dam is a Pathfinder that records 12-105 WR.

188 **BLUEBLOOD LADY ELLSTON G252**
Open Heifer Reg. 16124952 Tattoo: L/R G252 2-28-2008

ALC Nobleman N01N
S A NOBLEMAN 495
S A Pleasant Mary 62 #

Bon View Paragon 714 #
BLUEBLOOD LADY ELLSTON X99
Blueblood Lady Ellston N99

B/R New Frontier 095 #
ALC LYN T03L
Bon View New Design 878 #
Pleasant Mary S A 569
Bon View Paragon 1190 #
Bon View Gammer 2070 #
S A F Fix 8178 #
Blueblood Lady Ellston B41

BW	+3.8
WW	+44
Milk	+20
YW	+78

BW 67		Adj. 205 617		WR 105	
Adj. 365/YR	%IMF/Ratio	Adj. RE/Ratio	Rib Fat/Ratio	Rump Fat/Ratio	
CW +12	Marb. +.31	RE +.08	FAT +.009		
\$W +22.17	\$F +19.75	\$G +21.60	\$B +40.71		
Scr. +.30	CED +0	CEM +8	25%	\$EN +4.63	
Dam's Production:		IMF Ratios 5-116		RE Ratios 5-96	
BWR 7-100		WWR 7-104		YWR 5-101	
Sons @ Auction: 1-\$2000		Daughters @ Auction: 3-\$1600		Daughters In Herd: None	
Grandam's Production:		Sons @ Auction: 3-\$2100		Daughters @ Auction: 3-\$1950	
BWR 11-97		WWR 11-102		YWR 7-104	

- ★ Sire Nobleman can certainly insert high growth genetics.
- ★ X99 has been a solid producing cow. She has a 352 day calving interval on her 7 progeny. With feed costs the way they are, if a cow doesn't have a calf every 365 days, she probably isn't deserving of a spot in the herd.
- ★ Art McGuire purchased X99's last son, a very complete Gridiron son.
- ★ Grandam N99 is the 12th top IMF ratio cow in the herd with 5-120 IMF ratio!
- ★ For as long as I can remember, N99 has been missing an eye (poked out before my time). Even with just one eye, she is as calm as they come. When you come up on her blind side, just talk to her and push her in the direction you want her to go. She obeys in a laid back manner. Missing an eye certainly hasn't let her miss on anything else. She has a 360 day calving interval and raises a big calf every year.
- ★ N99's first son was the top weaning weight bull calf of his crop and was purchased by Dale Haight. A daughter was a showy photo feature open heifer in our 2004 auction purchased by Galaxy Beef. See her picture on page 12 by lot 18.

189 **ELBAMERE QUEEN ELLSTON G286**
Open Heifer Reg. 16124962 Tattoo: L/R G286 3-04-2008

S A F Connection #
SYDGEN C C & 7
SydGen Forever Lady 4087

SVF Gdar 216 LTD #
S A F Royal Queen 5084
SydGen 1407 Corona 2016
S A F Forever Lady 8292
Hyline Right Time 338 #
Andora Gammer 9023
S A Neutron 377 #
Elbamere Queen Z156

BW	+3.0
WW	+59 2%
Milk	+25 20%
YW	+99 5%

BW 75		Adj. 205 639		WR 108	
Adj. 365/YR	%IMF/Ratio	Adj. RE/Ratio	Rib Fat/Ratio	Rump Fat/Ratio	
CW +15 25%	Marb. +.39	RE +.21	FAT +.010		
\$W +29.01 10%	\$F +34.70 10%	\$G +25.50 30%	\$B +50.14 15%		
Scr. NA	CED +4	CEM +6	\$EN -6.41		
Dam's Production:		IMF Ratios 1-129		RE Ratios 1-126	
BWR 2-99		WWR 2-106		YWR 1-103	
Sons @ Auction: None		Daughters @ Auction: None		Daughters In Herd: None	
Grandam's Production:		Sons @ Auction: 1-\$3600		Daughters @ Auction: 1-\$3000	
BWR 5-92		WWR 5-104		YWR 3-101	

- ★ The calving book notes beside G286 and dam D260 read, "Quiet cow, easy to get along with." D260 was the perfect combination for CC&7. She is a moderate framed female that is super deep and thick.
- ★ A maternal sister to G286 is just entering the replacement herd. She had the 3rd biggest adjusted ribeye of the spring 2007 heifer crop.
- ★ Dam D260 comes from one of the lowest birth weight cow families in the herd. D260 and A23 have two of the lowest BW EPDs in the herd, and Z156 has the #1 lowest!
- ★ Grandam A23 produced an excellent CC&7 calf this year, he sells as lot 13. Her two previous Gridiron calves were both photo features, selling to Art McGuire and Sydenstricker Genetics. See the heifer on page 10.
- ★ A23 weaned at 694 lbs., WR 111, YW 1068 lbs., YR 103, IMF 5.40, ratio 116, ribeye 14.4", ratio 103. A23 has a 357 day calving interval along with 3-109 IMF ratio and 3-100 ribeye ratio. She has a superb udder.
- ★ Great grandam Z156 is David's favorite cow. She is now the oldest cow in the herd at 18 years (her first progeny not recorded in Doc Shinkle's herd). She still is sound, functional, and fine uddered. She is a small cow that always weans a huge percentage of her body weight. She has 13-96 BWR, 13-108 WR, 10-101 YR, 8-102 IMF ratio, and 8-104 ribeye ratio. Perfection at every level!
- ★ Z156 has 6 direct daughters working in the herd, one is a Pathfinder. These 6 daughters have a total of 33 progeny averaging 103 at wean.
- ★ G286 is in the +50.00 club for \$Beef Value.



OPEN HEIFERS





Pride of Ellston G167 – Lot 190



Pride of Ellston A70
Owned by Dallas & Karol VanHorn
\$5250 top selling female
in 2004 sale and maternal sister
to the dam of lot 190



Pride of Ellston E118
Champion Angus Heifer at the 2007
Montgomery County Fair for
Jonathan Cerven. \$2200 maternal
sister to the dam of lot 190

190
Open Heifer
Twin w/Cow

PRIDE OF ELLSTON G167

Reg. 16124921 Tattoo: L/R G167 2-19-2008

S A F Connection #
SYDGEN C C & 7
SydGen Forever Lady 4087

TC Gridiron 258
PRIDE OF ELLSTON D58
G G Pride 9232 #

SVF Gdar 216 LTD #
S A F Royal Queen 5084
SydGen 1407 Corona 2016
S A F Forever Lady 8292
G A R Grid Maker #
TC Blackbird 7049 #
TC Stockman 365 #
G G Pride 545

BW	+2.4
WW	+65 1%
Milk	+24 25%
YW	+110 1%

BW 48		Adj. 205 662		WR 112	
Adj. 365/YR	%IMF/Ratio	Adj. RE/Ratio	Rib Fat/Ratio	Rump Fat/Ratio	
CW +18 15%	Marb. +.35	RE +.46 5%	FAT -.005 20%		
\$W +30.67 5%	\$F +43.70 2%	\$G +28.22 20%	\$B +57.14 5%		
Scr. +1.02 10%	CED +8 20%	CEM +9 15%	\$EN -8.96		
Dam's Production:		IMF Ratios 1-140		RE Ratios 1-102	
BWR 1-105		WWR 1-107		YWR 1-108	
Sons @ Auction: 1-\$3750		Daughters @ Auction: None		Daughters In Herd: None	
Grandam's Production:		Sons @ Auction: 1-\$3600		Daughters @ Auction: 2-\$3750	
BWR 8-105		WWR 8-105		YWR 7-109	

- ★ D58 had a 61 lb. birth weight, WW 703 lbs., WR 109, YW 1018 lbs., YR 101, and scanned a 13.1" ribeye, ratio 107.
- ★ D58's EPDs: BW +1.9, WW +53 (3%), Milk +21, YW +95 (3%), Marb. +.24, Ribeye +.44 (2%), Fat -.017 (15%), \$W +28.88 (5%), \$F +33.00 (4%), \$G +25.67 (15%), \$B 48.34 (5%).
- ★ Grandam 9232 has brought 3 progeny to auction, and all have been photo features. Dallas and Karol Van Horn selected 9232's first daughter at auction (pictured above) that was the top selling female in our 2004 auction. 9232's son was the 11th top WW bull of the crop selling to Chris Cadle.
- ★ 9232's last feature daughter, the 6th heaviest heifer calf of her crop, was successfully shown by Jonathan Cerven at the 2007 Montgomery County Fair where she was named Champion Angus Heifer! Jonathan played on the famous Stanton football team that set all sorts of 8 man football records! In 2007, Stanton was the State Champion in 8 man football and nearly made it two-in-a-row in 2008. Andrew Cerven, Lucas Oster, and Zachary McCarthy also play on this team. Congratulations to an outstanding group of young men!

In Loving Memory



Miss Erica Ellston G128 had the 10th high WW EPD in the breed and was featured on our flyer and in sale ads. The day before our catalog was to be printed, this CC&7 heifer died on the operating table at Iowa State University with a telescoping gut. We promise there will be more like her. . . over 80 females will calve to CC&7 this spring at Hoover Angus.

- ★ A nice flat-topped CC&7 heifer with performance. A must-see in person, she has developed beautifully since her picture was taken in early November. Since she is a twin with a cow, her EPDs are an average of her sire and dam, and do not take into account her excellent performance. I would expect her to have performance above and beyond what her EPDs indicate.
- ★ **G167 has the highest WW EPD of any female in this offering and the second highest YW EPD!** Her WW and YW EPDs go above and beyond the top 1% of the breed! Her YW EPD is the 8th high of any Hoover-owned female (among 700 females)! G167 has the biggest Ribeye EPD of the open heifers selling today!
- ★ CC&7 has progeny recorded in 17 herds his first year of use. Thirteen of these herds used him on heifers, with an average calving ease of 1.0. Shortly after the CC&7 calves were born, we could tell they would lead the pack.
- ★ Our Christmas present this year was the jump CC&7's EPDs took after his first progeny in multiple herds were recorded. His WW EPD jumped 20 pounds to earn him the title of 10th high WW EPD among current sires! He is the 19th high YW EPD among current sires!
- ★ Seven photo feature paternal brothers sell from this first crop of CC&7 calves.
- ★ Dam D58 raised a 739 lb. bull calf her first year to ratio 107. This bull was a long-sided, powerful bull with the 3rd high IMF scan of the yearling bulls. He was selected by Dennis Faust for \$3750. Remember me talking about Dennis in the footnote of lot 182? Same story here, Dennis approved of D58 before selecting this bull.
- ★ D58 is a perfect sized Gridiron daughter with a lot to offer. Not only has she given us 3 live calves (each on February 19th), they are all very good calves!



OPEN HEIFERS

