



H&K All Around F32
Owned by Chateau Enterprises & Husz Brothers
 \$5250 fourth top selling bull in 2008 sale and relative to lots 1 & 2



H&K Neutron 377 Z7
Owned by Wayne James
 \$11,000 top selling bull in 2002 sale and full brother to the grandam of lot 1 and maternal brother to the dam of lot 2

H&K CC&7 G18 – Lot 1

1 Bull **H&K CC&7 G18**
 Reg. 16124994 Tattoo: L/R G18 1-25-2008

S A F Connection #
SYDGEN C C & 7
 SydGen Forever Lady 4087

TC Gridiron 258
ERICA OF ELLSTON C124
 Erica of Ellston V65

SVF Gdar 216 LTD #
 S A F Royal Queen 5084
 SydGen 1407 Corona 2016
 S A F Forever Lady 8292
 G A R Grid Maker #
 TC Blackbird 7049 #
 S A Neutron 377 #
 Shottish V047

BW	+2.6
WW	+75 1%
Milk	+26 15%
YW	+122 1%

BW 72	Adj. 205 818	WR 126	Adj. Scr.	Adj. Pelvic
Adj. 365/YR	%IMF/Ratio	Adj. RE/Ratio	Rib Fat/Ratio	Rump Fat/Ratio
CW +18 15%	Marb. +.29	RE +.47 4%	FAT +.012	
\$W +33.32 1%	\$F +52.43 1%	\$G +24.48	\$B +55.49 10%	
Scr. +1.27 5%	CED +7 30%	CEM +9 15%	SEN -14.69	
Dam's Production:		IMF Ratios 2-95		RE Ratios 2-96
BWR 3-95		WWR 3-113		YWR 2-101
Sons @ Auction: None		Daughters @ Auction: None		Daughters In Herd: 1-110
Grandam's Production:		Sons @ Auction: 2-\$4125		Daughters @ Auction: None
BWR 7-98		WWR 7-103		YWR 7-102

- ★ Retaining 1/3 revenue sharing semen interest.
- ★ **G18: 7th HIGH WW EPD AMONG 132,958 NON-PARENT ANGUS BULLS!** His WW EPD is 12 pounds above the top 1% of the breed and his YW EPD is 11 pounds above the top 1%!
- ★ G18 is the investment of a lifetime. Evaluate him in person, and you will find he has so much to offer in one package. He is the 3rd heaviest weaning weight calf of over 150 spring-born bull calves! You would have to put a lot of miles on your vehicle and travel the country to find a stouter calf with comparable EPDs and a disposition like his. G18 is a much-needed outcross pedigree for many of today's Angus herds.
- ★ G18 is the top WW and YW EPD animal in this offering.
- ★ Look at the growth EPDs of the sire, maternal grandsire, and maternal great grandsire of G18. CC&7 ranks above the top 1% of the Angus breed for WW EPD, YW EPD, \$W, \$F AND \$B! Gridiron has a top 2% WW and Ribeye EPD, and top 3% YW EPD. 377 has a YW EPD four pounds above the top 1% of current sires and a \$F way above the top 1%. Ribeye EPD top 3%, Scrotal top 4%.
- ★ This fall brought a lot of mud. . .when we were cleaning up cattle for picture taking, each of the photo bulls would be run through the chute for removal of mud balls, compacted mud on the front knees, etc. However, one of the bulls didn't make it to the chute. The guys started combing on him in the barn while he was awaiting his trip to the chute. He enjoyed the attention so much that

- he even let them comb the front knees clean. Of course, the bull with this awesome personality is G18.
- ★ Dam C124 ties as the #14 top indexing cow of the herd with 3-113 WR! Her top 1% WW and top 2% YW EPD prove her genetic excellence for growth. Her Scrotal EPD in the top 3% helps give G18 an excellent scrotal size. C124's Ribeye EPD ranks in the best 2% of current dams.
- ★ C124 has a 356 day calving interval. Might she be looking at Pathfinder status this year? Her \$W value of +35.89 is way above the top 1% of the breed (+32.99)! She ranks #16 of all Hoover-owned females for \$W in a herd where 79 females rank in the top 1% for \$W!
- ★ Her only daughter works in the herd with 1-110 WR. She had a beautiful Friction heifer calf her first year.
- ★ C124 has two maternal sisters: one with 4-105 WR and one with 1-112 WR. Sister B235 has been the #1 IMF ratio cow in the herd for two years running with 3-135 IMF ratio! B235's daughter ties as the #1 indexing cow of the herd with 2-121 WR!
- ★ Grandam V65 has been a low birth, high growth, good carcass cow. She has 7-103 IMF ratio and 7-105 ribeye ratio with below herd average fat ratios. Her 347 day calving interval is one of the shortest in the herd.
- ★ V65 weaned at 648 lbs., WR 103, YW 1062 lbs., YR 113, IMF 6.12, ratio 129, ribeye 11.4", ratio 105. This earned her a Marbling EPD +.28, top 30%, and Ribeye EPD +.36, top 4%.
- ★ V65's 2008 feature bull calf was the fourth top selling bull at \$5250 to Husz Brothers and Chateau Enterprises. See his picture above. His name, H&K All Around F32, was a very fitting name for how he put everything together. A full brother sold to Dustin McCoy in our 2006 auction—at \$3000, this was the cheapest bull in the auction for the quality of bull he was! Dustin comes to the farm prior to the sale and looks over the bulls, ensuring he gets one of the top bulls each time.
- ★ Now on to "the rest of the story". Great grandam V047 produced four sons averaging \$5075. Her 2001 bull calf topped our 2002 auction at \$11,000 to Angus breeder Wayne James. This bull posted a 825 lb. weaning weight, WR 124, YW 1569 lbs., YR 123. He scanned off the charts and now records 130 progeny at 102 IMF ratio and 100 ribeye ratio. His +74 WW EPD is the 12th high WW EPD in the nation, +126 YW EPD is the 18th high!
- ★ Note that V047 is the grandam of lot 2.
- ★ Only two cows have brought both a feature yearling and feature two-year-old to this year's auction. One is Z9, dam of lots 58 and 59, and the other is C124, dam of lot 1 and older brother lot 60.
- ★ G18 is a stout guy that will certainly put the "beef" back in cows that are lacking. Dr. Hensley said, "Real good semen" when G18 was tested in December.
- ★ G18 may join past Hoover Angus sale graduates such as S104, X3, Z7, B2, C16, E160 and Acceleration that have seen artificial use back in the Hoover program. When you can't buy 'em any better, use your own!



YEARLING BULLS





H&K CC&7 G56 – Lot 2



Erica of Ellston E9
Owned by
Dr. Martin Nold
\$4250 top selling female
in 2008 sale and
maternal sister to lot 2
and relative to lot 1

2 Bull H&K CC&7 G56

Reg. 16119673 Tattoo: L/R G56 2-06-2008

S A F Connection #
SYDGEN C C & 7
 SydGen Forever Lady 4087

H&K Dark Star M163 #
ERICA OF ELLSTON R155 #
 Shottish V047

SVF Gdar 216 LTD #
 S A F Royal Queen 5084
 SydGen 1407 Corona 2016
 S A F Forever Lady 8292
 S A V Dark Star 1076
 Blueblood Lady Thymac U222
 Scotch Cap #
 Dal Bairn Erica 37

BW	+3.3
WW	+70 1%
Milk	+28 5%
YW	+106 3%

BW 82	Adj. 205 818	WR 126	Adj. Scr.	Adj. Pelvic
Adj. 365/YR	%IMF/Ratio	Adj. RE/Ratio	Rib Fat/Ratio	Rump Fat/Ratio
CW +16 20%	Marb. +.30	RE +.32 15%	FAT -.002 25%	
\$W +33.99 1%	\$F +37.50 10%	\$G +24.82 30%	\$B +50.84 15%	
Scr. +.74 25%	CED +4	CEM +7	\$EN -11.44	
Dam's Production:		IMF Ratios 8-106	RE Ratios 8-96	
BWR 11-101		WWR 11-112	YWR 10-107	
Sons @ Auction: 5-\$2500		Daughters @ Auction: 2-\$1600	Daughters In Herd: 2-105	
Grandam's Production:		Sons @ Auction: 4-\$5075	Daughters @ Auction: None	
BWR 9-101		WWR 9-112	YWR 9-111	

- ★ Retaining 1/3 revenue sharing semen interest.
- ★ **G56: 12th HIGH WW EPD AMONG 132,958 NON-PARENT ANGUS BULLS!**
- ★ Undoubtedly one of the best calves of the crop. Not a big surprise though, out of a cow that does a superb job every year.
- ★ G56 tied as the #3 heaviest weaning weight calf of the spring 2008 crop! This pushed his WW EPD 7 pounds above the top 1% of the breed! His \$Weaned Calf Value (\$W) is also above the top 1% of the breed.
- ★ R155 still made the Pathfinder report at 12 years of age in 2008, and I would expect her to make it in 2009 at 13 years of age with a 363 day calving interval.
- ★ R155 produced the top selling bred heifer in our 2008 auction to Dr. Nold of South Dakota. She was the 8th heaviest heifer calf of her crop. This heifer had a very even udder and raised a beautiful CC&7 heifer calf.
- ★ R155's other calf in our 2008 auction was a big, rugged 377 son that was purchased by repeat customer Randy Pendleton. Her 2003 calf was the 10th heaviest calf of his crop and was purchased by repeat customer Roger Vest.
- ★ Two maternal sisters to R155 work in the herd with 7-108 WR and 7-103 WR.
- ★ Grandam V047 was the herd bull making kind. She produced H&K Neutron 377 Z7, the 2002 sale-topping bull at \$11,000 to Wayne James. Wayne and wife Dixie sold two \$9000 females—one sired by Z7 and one out of a Z7 dam. These two females alone more than paid the \$11,000 purchase price of Z7! Read more about Z7 in the footnote of lot 1.
- ★ Another feature son of V047 was purchased for \$4200 by Landmark Angus.
- ★ In our 2008 auction, lots 3-7 traced back to V047 and these 5 bulls averaged \$3230. V047 is the great grandam of lot 1 this year.
- ★ We recommend G56 for use on cows. He ties as the second highest WW EPD bull in the auction! He has a gentle disposition like daddy CC&7.

3 Bull H&K CC&7 G8
 Reg. 16119660 Tattoo: L/R G8 1-18-2008

S A F Connection #
SYDGEN C C & 7
 SydGen Forever Lady 4087
 Bon View Paragon 2121 #
MISS BLACKCAP ELLSTON N84 #
 Blueblood Lady Ellston K534

SVF Gdar 216 LTD #
 S A F Royal Queen 5084
 SydGen 1407 Corona 2016
 S A F Forever Lady 8292
 Bon View Paragon 2108
 Bon View Erica 69
 Oneills Gold Nugget
 Blueblood Lady Ellston 430

BW	+2.1
WW	+59 3%
Milk	+22
YW	+93 15%

BW 73	Adj. 205 690	WR 106	Adj. Scr.	Adj. Pelvic
Adj. 365/YR	%IMF/Ratio	Adj. RE/Ratio	Rib Fat/Ratio	Rump Fat/Ratio
CW +18 15%	Marb. +.13	RE +.32 15%	FAT -.014 10%	
\$W +32.17 2%	\$F +28.67 30%	\$G +18.69	\$B +43.96 30%	
Scr. +.72 25%	CED +6	CEM +6	\$EN -1.77	
Dam's Production:		IMF Ratios 9-87	RE Ratios 9-108	
BWR 13-104		WWR 13-112	YWR 12-108	
Sons @ Auction: 4-\$3450		Daughters @ Auction: 3-\$2975	Daughters In Herd: 2-101	

- ★ A super long CC&7 son out of one of the top producing cows of the herd. The calving book says "quick easy birth".
- ★ If you are looking for a bull to keep daughters out of, and need a bloodline change from Neutron and Gridiron, mark this bull at the top of your list.
- ★ Dam N84 has gone far above and beyond the strict requirements for the Pathfinder program. She has long been one of the top indexing cows of the herd.
- ★ In 2008, N84 was the oldest Hoover owned cow still in production that made the elite Pathfinder report. At 14 years of age N84 is still very sound, good uddered, and fertile. She has a 360 day calving interval on 13 progeny!
- ★ N84's feature heifer calf topped our 2005 auction at \$5000 to Jim Fastert. She was the #2 WW heifer calf of the crop at 792 lbs., WR 119.
- ★ N84's first 377 son was the \$5250 top selling bull in our 2000 auction selling to Jack Lint. Other sons and daughters work in the herds of Bryan Hawley, Chris Cadle, Ralph McQuerry, Charles McCracken, and Ralph Findley.
- ★ N84 had a 60 lb. birth weight and weaned at 628 lbs., WR 119.
- ★ N84's granddaughter was a full page photo feature in our 2008 auction selling to repeat customer Thomas Doud. She was a gorgeous female! Tom knows how to pick the best!

4 Bull H&K CC&7 G73
 Reg. 16119677 Tattoo: L/R G73 2-08-2008

S A F Connection #
SYDGEN C C & 7
 SydGen Forever Lady 4087

SVF Gdar 216 LTD #
 S A F Royal Queen 5084
 SydGen 1407 Corona 2016
 S A F Forever Lady 8292
 S A F Neutron #
 S A Erica 742
 Bon View Paragon 2121 #
 Ellstons Keymura 188

BW	+8 20%
WW	+60 2%
Milk	+18
YW	+95 15%

BW 74	Adj. 205 692	WR 107	Adj. Scr.	Adj. Pelvic
Adj. 365/YR	%IMF/Ratio	Adj. RE/Ratio	Rib Fat/Ratio	Rump Fat/Ratio
CW +12	Marb. +.28	RE +.14	FAT +.015	
\$W +33.17 1%	\$F +30.28 25%	\$G +20.70	\$B +41.97	
Scr. +1.15 10%	CED +9 15%	CEM +9 15%	\$EN +1.19	
Dam's Production:		IMF Ratios 6-113	RE Ratios 6-95	
BWR 8-96		WWR 8-98	YWR 5-98	
Sons @ Auction: 2-\$2950		Daughters @ Auction: 1-\$1600	Daughters In Herd: 1-82	

- ★ Retaining 1/3 revenue sharing semen interest.
- ★ A CC&7 son to use on heifers! He is a heck of a calving ease bull with a lot of body depth and capacity. You will like his profile. He has a big scrotal and is easy fleshing.
- ★ Dam V150 has the 4th lowest BW EPD of any cow in production at Hoover Angus at -1.1. Eight calves have had an average 69 pound birth weight.
- ★ V150 has a 359 day calving interval. Her Scrotal EPD in the top 10% of current dams indicates good fertility.
- ★ V150's daughter in the herd is D80. D80 was the #2 scanning IMF female of her crop with an 8.51 IMF, ratio 167! D80 has raised one calf—it ratioed low as she was battling a nasty cut injury on her hoof while raising the calf.
- ★ V150's sons and daughter have been purchased by Butch Miller, Jim Crago, and Melvin Gray. Melvin's bull was a feature in our 2006 auction selling for \$4200.
- ★ V150's individual performance: BW 60 lbs., WW 704 lbs., WR 112, YW 994 lbs., YR 105, IMF 5.06, ratio 107, RE 11.2", ratio 103.
- ★ This bull comes highly recommended to use on heifers and still produce calves that wean as heavy as the calves out of mature cows!



YEARLING BULLS



5
Bull

H&K STATESMAN G1

Reg. 16119656 Tattoo: L/R G1 1-07-2008

Sitz Greatplains 9520
WOODHILL STATESMAN 54K-90N
Woodhill Lucy 666-54K

Bensons Mack 955
BLACKBIRD OF ELLSTON M254
Blackbird Thymac V230

O C C Great Plains 943G #
Sitz Pride 3038
Connealy Frontline #
V D A R Lucy 666
Grubbs Mac Kenzie #
Epic Eileen B9F 173
Mid Iowa Shotgun 17S
Blackbird Thymac B14

BW	+8	20%
WW	+43	
Milk	+29	3%
YW	+58	

BW 65	Adj. 205 748	WR 115	Adj. Scr.	Adj. Pelvic
Adj. 365/YR	%IMF/Ratio	Adj. RE/Ratio	Rib Fat/Ratio	Rump Fat/Ratio
CW +1	Marb. +.27	RE +.21	FAT +.023	
\$W +33.72 1%	\$F +1.95	\$G +22.37	\$B +28.14	
Scr. +.53	CED +6	CEM +7	SEN +1.32	
Dam's Production:		IMF Ratios 9-105	RE Ratios 9-108	
BWR 12-102		WWR 12-118	YWR 11-107	
Sons @ Auction: 6-\$3050		Daughters @ Auction: 2-\$1775	Daughters In Herd: 3-105	

- ★ A Statesman son with more frame that went from a 65 lb. birth weight to a 748 lb. weaning weight when his dam was 14 years old! G1 has a big scrotal.
- ★ Dam M254 has long reigned as the #1 indexing cow of the herd. She now ranks #4 with 12-118 WR, only behind three younger cows that have far fewer progeny on record than M254 does. Year after year M254 turns out one of the heaviest calves of the crop. Her lowest rationing calf in her history has been a 711 lb. heifer to ratio 109 at weaning. Production doesn't get any finer than this. Even with being such a heavy milker, M254 finds time to get bred "on time" and has a calving interval of 358 days on her 12 progeny.
- ★ Three of M254's sons have been photo features. Progeny have been selected by: Mark Groth, Randy Welton, Dr. Palmer, Tim Adkins, Mike Carlson, Duane Devore, Henry Langstraat, and Harold Wachter.
- ★ M254's first daughter has achieved Pathfinder status. It took 6 years to get another daughter out of M254, but that next daughter was worth waiting for—she was the #1 WW female of her crop at 811 lbs., WR 122. This cow now records 3-109 WR and is a lovable cow.
- ★ If your cow herd needs added milk, this is the #1 bull in the offering to accomplish that goal. He ties as the top Milk EPD bull of the sale. G1 offers a \$Weaned Calf Value (\$W) above the top 1% of the breed.
- ★ This bull's lower YW EPD because his dam is 14 years old will make him a bargain sale day. Look him up in person, and I think you will realize he obviously has more growth than predicted by this EPD! He is the second oldest yearling bull in the offering, and as of our last weigh date, he had the third heaviest actual weight.

6
Bull

H&K GRIDIRON G10

Reg. 16126676 Tattoo: L/R: G10 1-21-2008

G A R Grid Maker #
TC GRIDIRON 258
TC Blackbird 7049 #

S A F Fix 8178 #
BLACKBIRD ELLSTON P37 #
Blackbird Ellston D68

G D A R Traveler 044 #
G A R Precision 2536
T C Dividend 494 #
O C C Blackbird 902D
S A F Power Fix #
S A F Bardolier Lady 6153
Summitcrest Revolution L011
Blackbird Ellston 517

BW	+2.4
WW	+36
Milk	+18
YW	+70

BW 71	Adj. 205 636	WR 98	Adj. Scr.	Adj. Pelvic
Adj. 365/YR	%IMF/Ratio	Adj. RE/Ratio	Rib Fat/Ratio	Rump Fat/Ratio
CW +5	Marb. +.08	RE +.20	FAT +.010	
\$W +21.97	\$F +15.15	\$G +14.97	\$B +26.93	
Scr. +.56	CED +5	CEM +10 10%	SEN +9.55 15%	
Dam's Production:		IMF Ratios 9-98	RE Ratios 9-98	
BWR 12-96		WWR 12-105	YWR 11-105	
Sons @ Auction: 6-\$3400		Daughters @ Auction: 3-\$1225	Daughters In Herd: None	

- ★ A big framed Gridiron son. His full brother was selected by Melvin Gray for \$4750. This bull was good enough that we knew we couldn't produce any better mating for P37 than with Gridiron, so we bred her back to Gridiron for 2008 and 2009.
- ★ David was on night calving duty, but Doc said he was supposed to be "taking it easy" after surgery. . . His explicit instructions from Joy: If anyone starts to calve, come get me so I can help dry off the calf, give first shots, etc. When P37 started to calve, David goes to get Joy. P37 gave birth before they got back. All was well, and they got G10 dried off on that cold night and put to bed with momma. He was an active little guy, bouncing all around the pen.
- ★ How many cows would you have to sift through to find one that is a Pathfinder, records 12-96 BWR, 12-105 WR, and has a 360 day calving interval? Look no further, she is the dam of G10.
- ★ P37 still made the elite Pathfinder report at 13 years of age. She was the third oldest Hoover cow in the 2008 report. I'd say she is set to make it again in 2009.
- ★ G10 has a kink in his tail from when it was broken as a youngster. This can be your mark of identification if he ever loses his tag!



H&K CC&7 G4 – Lot 7



H&K Gridiron F8
Owned by Homer Tanner
\$3000 maternal brother
to lot 7

7
Bull

H&K CC&7 G4

Reg. 16119658 Tattoo: L/R G4 1-12-2008

S A F Connection #
SYDGEN C C & 7
SydGen Forever Lady 4087

H&K Dark Star M163 #
BLKCP EMPRESS ELLSTON X216
Blackcap Empress Ellston C20

SVF Gdar 216 LTD #
S A F Royal Queen 5084
SydGen 1407 Corona 2016
S A F Forever Lady 8292
S A V Dark Star 1076
Blueblood Lady Thymac U222
Crackerjack Baros 61
Blackcap Empress Ellston 63

BW	+2.8
WW	+57 5%
Milk	+25 20%
YW	+87 30%

BW 83	Adj. 205 796	WR 123	Adj. Scr.	Adj. Pelvic
Adj. 365/YR	%IMF/Ratio	Adj. RE/Ratio	Rib Fat/Ratio	Rump Fat/Ratio
CW +10	Marb. +.24	RE +.40 10%	FAT -.021 5%	
\$W +31.79 3%	\$F +23.55	\$G +26.12 25%	\$B +44.24 30%	
Scr. +.76 25%	CED +2	CEM +5	SEN -2.68	
Dam's Production:		IMF Ratios 4-106	RE Ratios 4-109	
BWR 6-103		WWR 6-110	YWR 4-105	
Sons @ Auction: 3-\$3000		Daughters @ Auction: None	Daughters In Herd: None	

- ★ Retaining 1/3 revenue sharing semen interest. An outcross pedigree for today's Angus breeders!
- ★ This is the calf you will pick out phenotypically and come back to every time. He is darn near a twin to daddy CC&7. He enjoys being scratched.
- ★ G4 was the 8th top weaning weight bull calf of the crop, and has the biggest rear end of 'em all. He is super long spined.
- ★ Don't cross G4 off because he isn't a +100 YW EPD. Our Friction bull was a +87 on YW EPD when we purchased him (the same as G4). Now, after three calf crops have had weights through AHIR, Friction's YW EPD has risen to +112 because of his exceptional progeny performance. Let G4 do the same in your herd!
- ★ A maternal brother to G4 sold as a photo feature in our 2008 auction to Homer Tanner for \$3000. I'd say this was the buy of the day considering F8 was the deepest, thickest bull of the offering.
- ★ Another photo feature maternal brother to G4 sold to Kenneth Crouch for \$3100. Kenneth also selected X216's first Gridiron son that tied as the top scanning ribeye yearling bull in the 2005 auction.
- ★ X216 has weaned a bull calf averaging 765 lbs. each year. She has yet to give us a replacement daughter. Her first four bull calves have averaged a 15.2" ribeye. X216 offers a lot of high-yielding red meat potential, making her 48th high \$Yield Grade (\$YG) Index in the Angus breed out of 263,224 dams!
- ★ X216 gave birth to G4 at 11:30 pm. David and Landi were going to give it one hour before they gave it first shots. They set the timer for one hour (which they both slept through) and woke up in an hour and a half. X216's calf had sucked and was up bucking and running circles around his mom when they got back to it.
- ★ G4 is recommended for cows because of his super muscle shape. Tired of bulls with huge EPDs but look like they should have been a steer? G4 will fulfill your desires.



YEARLING BULLS



8 Bull

H&K STATESMAN G12

Reg. 16119661 Tattoo: L/R G12 1-05-2008

Sitz Greatplains 9520
WOODHILL STATESMAN 54K-90N
Woodhill Lucy 666-54K

S A V Dark Star 1076
MISS BLACKCAP ELLSTON P12 #
Miss Blackcap Ellston F135

O C C Great Plains 943G #
Sitz Pride 3038
Connealy Frontline #
V D A R Lucy 666
Fairfield Dark Star P57 #
Northcote Jaclyn
Crackerjack Brutus 674
Miss Blackcap Ellston C71

BW	+2.9
WW	+43
Milk	+20
YW	+64

BW	80	Adj. 205	680	WR	105	Adj. Scr.		Adj. Pelvic	
	Adj. 365/YR		%IMF/Ratio		Adj. RE/Ratio		Rib Fat/Ratio		Rump Fat/Ratio
CW	-2	Marb.	+ .16	RE	+ .19		FAT	+ .015	
\$W	+26.38	30%	\$F	+7.22	\$G	+19.05	\$B	+22.35	
Scr.	+ .10	CED	+2	CEM	+6		\$EN	+7.61	25%
Dam's Production:			IMF Ratios	8-94		RE Ratios	8-103		
	BWR	12-108		WWR	12-104		YWR	11-102	
Sons @ Auction:	5-\$2250		Daughters @ Auction:	3-\$1500		Daughters In Herd:	1-103		

- * G12 offers extra length and a big scrotal. He has more frame and size than most Statesmans.
- * I know what you are thinking—G12 is the first calf born, before G1, G2, etc.? Yes, it has been a tradition for P12's calves always to be numbered 12. P12 was always one of the first to calve, and after the first few years of S12, T12, V12, it just became tradition to give her calf the 12 number. P12 has a 362 day calving interval.
- * P12's lone daughter in the herd has achieved Pathfinder status.
- * P12 has produced three photo features in past auctions. Three of her daughters were show heifers for young cattle enthusiasts.
- * P12 was Landi's third Champion Angus Heifer at the Ringgold County Fair. As a first calf heifer, she went back to the fair with bull calf at side and claimed Reserve Champion Cow-Calf honors. P12 was successful in the show ring because of her Dark Star look. Landi's first three Champion heifers were all sired by Dark Star 1076.

9 Bull

H&K STATESMAN G58

Reg. 16119674 Tattoo: L/R G58 2-07-2008

Sitz Greatplains 9520
WOODHILL STATESMAN 54K-90N
Woodhill Lucy 666-54K

Roth Famous 1006
MISS BLACKBIRD ELLSTON C224
Miss Blackbird Ellston A329

O C C Great Plains 943G #
Sitz Pride 3038
Connealy Frontline #
V D A R Lucy 666
Famous 7001 #
Roth Formera 9199
S A Neutron 377 #
Miss Blackbird Ellston S100

BW	+1.5	30%
WW	+55	10%
Milk	+20	
YW	+89	25%

BW	70	Adj. 205	628	WR	97	Adj. Scr.		Adj. Pelvic	
	Adj. 365/YR		%IMF/Ratio		Adj. RE/Ratio		Rib Fat/Ratio		Rump Fat/Ratio
CW	+7	Marb.	+ .33	RE	+ .15		FAT	+ .045	
\$W	+33.49	1%	\$F	+26.26	\$G	+19.74	\$B	+35.85	
Scr.		CED	+7	30%	CEM	+10	10%	\$EN	+3.35
Dam's Production:			IMF Ratios	1-100		RE Ratios	1-99		
	BWR	3-94		WWR	3-97		YWR	1-105	
Sons @ Auction:	None		Daughters @ Auction:	None		Daughters In Herd:	None		
Grandam's Production:		Sons @ Auction:	1-\$2500		Daughters @ Auction:	None			
	BWR	4-99		WWR	4-101		YWR	3-102	

- * A lower birth weight bull here that still offers a WW EPD in the top 10% of the breed. He has the genetic potential to scan one of the better IMF scores here today. His \$Weaned Calf Value (\$W) is above the top 1% of the breed. Read about the significance of \$W on page 23.
- * A maternal sister sells as a feature bred heifer, lot 119. This is the best heifer by "Extra" to date and will make a heck of a cow for her new owner.
- * Dam C224 had a 66 lb. birth weight, 720 lb. weaning weight, ratio 109, YW 1000 lbs., YR 104. Her WW EPD is in the top 1% of the breed. She scanned a 5.15 IMF, ratio 115.
- * C224 has a 358 day calving interval. C224 and her dam A329 calved the same day in 2007, and their daughters from this year sell as lots 119 and 120. In 2006, A329 and her twin sister A328 were AI bred one day apart, and in 2007 they calved one day apart.
- * Great grandam S100 records 8-97 BWR, 8-101 WR, and 6-102 YR, excluding twins A328 and A329 she raised by herself. While raising A328 and A329, she got bred back to calve 17 days earlier the next year! A328 and A329 weaned a combined total of 1258 lbs. S100 has a 360 day calving interval.
- * S100's daughter that sold in our 2005 auction has achieved Pathfinder status in Eric Fell's Angus herd.
- * This bull can easily be used on heifers.

10 Bull

H&K GRIDIRON G66

Reg. 16119675 Tattoo: L/R G66 2-07-2008

G A R Grid Maker #
TC GRIDIRON 258
TC Blackbird 7049 #

S A Neutron 44
KEYMURA OF ELLSTON R99
Keymura of Ellston M182

G D A R Traveler 044 #
G A R Precision 2536
T C Dividend 494 #
O C C Blackbird 902D
S A F Neutron #
S A Erica 205 #
S A V Dark Star 1076
Thymac Keymura Z27

BW	+2.1	
WW	+58	4%
Milk	+17	
YW	+91	20%

BW	70	Adj. 205	688	WR	106	Adj. Scr.		Adj. Pelvic	
	Adj. 365/YR		%IMF/Ratio		Adj. RE/Ratio		Rib Fat/Ratio		Rump Fat/Ratio
CW	+7	Marb.	+ .12	RE	+ .20		FAT	+ .002	30%
\$W	+31.60	3%	\$F	+27.08	\$G	+17.29	\$B	+33.60	
Scr.	+ .67	30%	CED	+6	CEM	+10	10%	\$EN	+4.12
Dam's Production:			IMF Ratios	5-101		RE Ratios	5-96		
	BWR	8-101		WWR	8-108		YWR	5-106	
Sons @ Auction:	3-\$3000		Daughters @ Auction:	2-\$2575		Daughters In Herd:	None		

- * Set yourself up for success with a powerful bull like this. He has Gridiron's muscle with a little lower birth weight. The cowboys will find this bull sale day. Coming 7 days early (based on a 283 day gestation) helped give him a lower birth weight.
- * Dam R99 is known as "one of the good ones" because she gives us a nice calf every year. She has a 358 day calving interval.
- * Her last son was selected by Nate Pierschbacher. Her top selling son at \$4800 was purchased by Ron McCord - North Grove Angus. Bill Hargrafen selected her feature daughter in our 2003 sale that was the top selling female that year at \$4000. Other progeny work in the herds of Eric Fell and Dale Owens.
- * R99 weaned a 709 lbs., WR 118 and YW 967 lbs., YR 115.
- * Grandam and great grandam no longer work in the herd, but recorded 9-103 WR and 10-104 WR, respectively.
- * You don't have to worry about this guy losing his tag and not knowing which one he is—his left ear is a little short from mamma licking it after he was dried off after he was born.

11 Bull

H&K GRIDIRON G53

Reg. 16119672 Tattoo: L/R G53 2-06-2008

G A R Grid Maker #
TC GRIDIRON 258
TC Blackbird 7049 #

Bon View Paragon 714 #
QUEENMERE OF ELLSTON Z64 #
Queenmere of Ellston L944

G D A R Traveler 044 #
G A R Precision 2536
T C Dividend 494 #
O C C Blackbird 902D
Bon View Paragon 1190 #
Bon View Gammer 2070 #
H&K Crackerjack G153
Queenmere Thymac 0118

BW	+1.9
WW	+44
Milk	+18
YW	+73

BW	71	Adj. 205	641	WR	99	Adj. Scr.		Adj. Pelvic	
	Adj. 365/YR		%IMF/Ratio		Adj. RE/Ratio		Rib Fat/Ratio		Rump Fat/Ratio
CW	+2	Marb.	+ .01	RE	+ .17		FAT	- .027	3%
\$W	+28.56	15%	\$F	+15.05	\$G	+15.31	\$B	+24.34	
Scr.	+ .52	CED	+5	CEM	+8	25%	\$EN	+9.30	20%
Dam's Production:			IMF Ratios	5-93		RE Ratios	5-92		
	BWR	6-102		WWR	6-101		YWR	5-99	
Sons @ Auction:	2-\$2625		Daughters @ Auction:	2-\$1700		Daughters In Herd:	None		
Grandam's Production:		Sons @ Auction:	6-\$2575		Daughters @ Auction:	None			
	BWR	11-101		WWR	11-104		YWR	9-106	

- * Eight Pathfinders in G53's pedigree, and it might be nine when Gridiron reaches this status.
- * Gridiron himself is a 10 Pathfinder sire. Gridiron has certainly gone above and beyond expectations at Hoover Angus and across the country. He adds the muscle and thickness that has been lost in much of the breed's "hot" pedigrees today.
- * Genex called a few days ago and asked for a mature scrotal measurement on Gridiron. We didn't knowingly have one, so we went to the "Allen" pasture where Gridiron was running with fall cows. The high that day was three degrees, so the scrotal tape was a little cold. Joy said, "Grit your teeth Bud". Gridiron didn't move a muscle and gave us a measurement of 46 cm.
- * Dam Z64 has a 358 day calving interval. A cow becomes expensive if she doesn't give birth to and raise a healthy calf every 365 days.
- * Z64 produced the #11 heaviest WW bull calf of the 2004 crop that sold to Kenneth Crouch for \$3500. Steve Norris, John O'Riley, and Mike Carlson selected the other progeny of Z64.
- * Grandam L944 had 6 sons come to auction, 3 of which were photo features. Enough said.
- * Use G53 to add lean muscle growth.



YEARLING BULLS





H&K Statesman G27 – Lot 12



**Elbamere Queen
Ellston E39
Owned by
Sydenstricker Genetics
\$3000 maternal sister to
lot 13 and relative to lot 15**

**12
Bull**

H&K STATESMAN G27

Reg. 16119664 Tattoo: L/R G27 1-29-2008

Sitz Greatplains 9520
WOODHILL STATESMAN 54K-90N
Woodhill Lucy 666-54K

TC Gridiron 258
BLACKCAP EMPRESS ELLSTON D15
Blkcp Empress Ellston P64 #

O C C Great Plains 943G #
Sitz Pride 3038
Connealy Frontline #
V D A R Lucy 666
G A R Grid Maker #
TC Blackbird 7049 #
S A V Dark Star 1076
Blackcap Empress Ellston F47

BW	+8	20%
WW	+50	20%
Milk	+24	25%
YW	+78	

BW	65	Adj. 205	667	WR	103	Adj. Scr.		Adj. Pelvic		
Adj. 365/YR		%IMF/Ratio		Adj. RE/Ratio		Rib Fat/Ratio		Rump Fat/Ratio		
CW	+0	Marb.	+16	RE	+30	20%	FAT	+014		
\$W	+32.90	2%	\$F	+17.55	\$G	+20.05	\$B	+27.48		
Scr.	+1.00	10%	CED	8	25%	CEM	+10	10%	\$EN	+99
Dam's Production:		IMF Ratios		None		RE Ratios		None		
BWR		1-89		WWR		1-103		YWR		None
Sons @ Auction:		None		Daughters @ Auction:		None		Daughters In Herd:		None
Grandam's Production:		Sons @ Auction:		7-\$3375		Daughters @ Auction:		None		
BWR		11-104		WWR		11-109		YWR		8-107

- ★ Retaining 1/3 revenue sharing semen interest.
- ★ A cute little Statesman bull ready to work on heifers. He will produce good weaning growth without overly big carcass weights or mature size.
- ★ Statesman has the 49th high \$Weaned Calf Value (\$W) among current Angus sires! Read on page 23 the meanings and difference between \$W and \$B.
- ★ Dam is a beautiful Gridiron that is pettable. I don't know why she is so tame, but I pet her almost every day during the summer. During the winter, she is one of the first cows to see if I happen to have an ear of corn in my hand. She is feminine, yet really thick and deep ribbed. Her dam, P64, has the showy Dark Star look with a very even udder.
- ★ P64 records a 358 day calving interval. She is a ribeye specialist with 7-107 ribeye ratio. You can't argue with success—seven sons have averaged \$3375!
- ★ P64 gets a stamp of approval every year. Her first son was the top WW EPD bull calf of the 1997 crop. Her 2002 bull calf scanned a 19.1" ribeye, the largest ever recorded at Hoover Angus. Roy & Rick Reno paid \$5000 for this bull, the 2nd top selling bull in the auction. Her next son was also selected by the Renos. He was a photo feature bull selling for \$6000 as the top selling two year-old. Then Mike Archer made the wise selection of her next son.
- ★ A Pathfinder maternal sister to D15 works in the Hoover herd.



Hoover Angus Crew, photos from left: Dale & Jessi lead Gridiron and CC&7 home after our 80th birthday bash. "Hats off to Tingley" in the 2008 Tingley Halloween parade: Barb, Landi, John, Joy, Charlie, Andy & Jessi. Josh prepared his specialty relish for our birthday bash.

**13
Bull**

H&K CC&7 G16

Reg. 16124995 Tattoo: L/R G16 1-24-2008

S A F Connection #
SYDGEN C C & 7
SydGen Forever Lady 4087

S A Neutron 377 #
ELBAMERE QUEEN ELLSTON A23
Elbamere Queen Z156

SVF Gdar 216 LTD #
S A F Royal Queen 5084
SydGen 1407 Corona 2016
S A F Forever Lady 8292
S A F Neutron #
S A Queen Susan 102 #
Thymac Skyliner U144
Elbamere Queen U111

BW	+6	15%
WW	+63	1%
Milk	+23	30%
YW	+100	5%

BW	67	Adj. 205	734	WR	113	Adj. Scr.		Adj. Pelvic		
Adj. 365/YR		%IMF/Ratio		Adj. RE/Ratio		Rib Fat/Ratio		Rump Fat/Ratio		
CW	+19	10%	Marb.	+33	RE	+42	5%	FAT	+019	
\$W	+35.07	1%	\$F	+34.14	15%	\$G	+24.39	\$B	+51.65	15%
Scr.	+1.00	10%	CED	+8	25%	CEM	+9	15%	\$EN	-4.87
Dam's Production:		IMF Ratios		3-109		RE Ratios		3-100		
BWR		5-92		WWR		5-104		YWR		3-101
Sons @ Auction:		1-\$3600		Daughters @ Auction:		1-\$3000		Daughters In Herd:		1-106
Grandam's Production:		Sons @ Auction:		3-\$3025		Daughters @ Auction:		1-\$1600		
BWR		13-96		WWR		13-108		YWR		10-101

- ★ Retaining 1/3 revenue sharing semen interest.
- ★ G16 is the #1 heifer bull of the auction with frame size! He still has good depth to go along with his frame. G16 ties as the lowest BW EPD bull in this offering.
- ★ From 67 pounds at birth to 734 pounds at weaning, this bull is following in the footsteps of his older siblings—very light birth weight and plenty of weaning growth.
- ★ The only bull in the auction with less than +1.0 BW EPD to +100 YW EPD!
- ★ Dam A23 was born at 70 lbs., weaned at 694 lbs., WR 111, YW 1068 lbs., YR 103, IMF 5.40, ratio 116, ribeye 14.4", ratio 103. A23 has a superb udder.
- ★ A23's feature son in our 2008 auction was selected by repeat customer Art McGuire for \$3600. A stout daughter was selected by Sydenstricker Genetics as a feature in our 2007 auction.
- ★ A granddaughter of A23 sells as lot 189 open heifer.
- ★ Grandam Z156 is the #1 lowest BW EPD cow in the herd! Six of her daughters work in the herd with an average 103 WR on their progeny. One is a Pathfinder.
- ★ Grandam Z156 is David's favorite cow in the herd. She is a small cow that weighs a huge percentage of her body weight. She has a 362 day calving interval and is now the oldest cow in the herd at 18 years. Her first progeny were not recorded through AHIR in Doc Shinkle's herd. Z156 has 8-102 IMF ratio and 8-104 ribeye ratio. Even at 18, she is still sound and functional with good fleshing ability.
- ★ G16 offers not only a top 1% WW EPD, but also a \$Weaned Calf Value above the top 1% and the third highest of the bulls in this offering!



YEARLING BULLS



14
Bull

H&K GRIDIRON G74

Reg. 16119678 Tattoo: L/R G74 2-08-2008

G A R Grid Maker #
TC GRIDIRON 258
TC Blackbird 7049 #

Bon View Paragon 2121 #
MISS ERICA ELLSTON X42
Miss Erica Ellston T14

G D A R Traveler 044 #
G A R Precision 2536
T C Dividend 494 #
O C C Blackbird 902D
Bon View Paragon 2108
Bon View Erica 69
S A Neutron 44
Miss Erica Ellston J327

BW	+3.7
WW	+53 10%
Milk	+21
YW	+91 20%

BW	82	Adj. 205	651	WR	100	Adj. Scr.		Adj. Pelvic	
Adj. 365/YR		%IMF/Ratio		Adj. RE/Ratio		Rib Fat/Ratio		Rump Fat/Ratio	
CW	+12	Marb.	+0.04	RE	+0.36	10%	FAT	+0.039	
\$W	+27.05	25%	\$F	+29.00	30%	\$G	+10.59	\$B	+31.52
Scr.	+0.50	CED	+2	CEM	+7		\$EN	+1.77	
Dam's Production:		IMF Ratios	5-95	RE Ratios	5-109				
BWR	7-106	WWR	7-107	YWR	5-110				
Sons @ Auction:	1-\$2300	Daughters @ Auction:	2-\$1925	Daughters In Herd:	3-105				

- ★ G74 is a Gridiron son that offers more fleshing ability than most. The vet noted an extra good swirl of semen when testing him in December.
- ★ X42 hasn't missed a beat. She has a 349 day calving interval on her 7 calves. Three daughters work in the herd, daughters have sold to Chris Cadle and Stephen Eiberger, and a son sold to Fred Rychnovsky.
- ★ The heifer purchased by Chris was the 10th heaviest weaning weight heifer and #1 adjusted yearling weight heifer of her crop! She has a WW EPD, YW EPD, and Ribeye EPD all above the top 1% of the breed! Chris knows how to pick the top ones!
- ★ X42 is an easy keeping cow that passes this on to her progeny. X42's three daughters in the herd all have excellent wean ratios on their calves.
- ★ Great grandam J327 has 11-109 WR and 2 Pathfinder daughters.
- ★ G74 is recommended for use on cows.

15
Bull

H&K GRIDIRON G155

Reg. 16119696 Tattoo: L/R: G155 2-18-2008

G A R Grid Maker #
TC GRIDIRON 258
TC Blackbird 7049 #

S A Neutron 377 #
ELBAMERE QUEEN Z28
Elbamere Queen Z156

G D A R Traveler 044 #
G A R Precision 2536
T C Dividend 494 #
O C C Blackbird 902D
S A F Neutron #
S A Queen Neutron 102 #
Thymac Skyliner U144
Elbamere Queen U111

BW	+4.4
WW	+50 20%
Milk	+17
YW	+85

BW	88	Adj. 205	652	WR	101	Adj. Scr.		Adj. Pelvic	
Adj. 365/YR		%IMF/Ratio		Adj. RE/Ratio		Rib Fat/Ratio		Rump Fat/Ratio	
CW	+11	Marb.	+0.14	RE	+0.45	5%	FAT	+0.028	
\$W	+24.00		\$F	+24.24		\$G	+17.57	\$B	+36.58
Scr.		CED	-1	CEM	+6		\$EN	+7.02	25%
Dam's Production:		IMF Ratios	4-111	RE Ratios	4-92				
BWR	6-96	WWR	6-100	YWR	4-99				
Sons @ Auction:	None	Daughters @ Auction:	2-\$1950	Daughters In Herd:	1-97				
Grandam's Production:		Sons @ Auction:	3-\$3025	Daughters @ Auction:	1-\$1600				
BWR	13-96	WWR	13-108	YWR	10-101				

- ★ A Gridiron son with more frame.
- ★ Dam Z28 has a 343 day calving interval. Every single year she has "moved up" in calving time.
- ★ Z28 had impeccable individual performance: BW 72 lbs., WW 676 lbs., WR 110, YW 972 lbs., YR 108, IMF 4.82, ratio 124, ribeye 14.5", ratio 124. She has a Ribeye EPD above the top 1% of the breed.
- ★ Z28's first daughters have been purchased by Maas Angus Farm of Illinois and Mark Groth, both repeat customers.
- ★ Grandam Z156 is a special cow—she is now 18 years old, and looks about half her age. She is still very sound and coming with a late January or early February calf. She has a 362 day calving interval. Her first progeny were not recorded in Doc Shinkle's herd. Her claim to fame is holding the title of #1 lowest BW EPD female in the herd at -2.2 for many years!
- ★ Z156 also is the cow with the most daughters retained in the herd. Six daughters working in the Hoover herd have a total of 33 progeny with an average 103 WR! And they do this with very low birth weights! One Z156 daughter has achieved Pathfinder status.
- ★ Read more about another daughter of Z156 in lot 13's footnote. This cow has done a superb job too!



H&K Neutron 377 B2
Owned by
Nold Family Angus
\$11,100 top selling bull in 2004 sale and maternal grandsire of lot 16

16
Bull

H&K STATESMAN G194

Reg. 16122444 Tattoo: L/R: G194 2-21-2008

Sitz Greatplains 9520
WOODHILL STATESMAN 54K-90N
Woodhill Lucy 666-54K

H&K Neutron 377 B2
MISS ERICA ELLSTON E138
Miss Erica Ellston B320

O C C Great Plains 943G #
Sitz Pride 3038
Connealy Frontline #
V D A R Lucy 666
S A Neutron 377 #
C J Gammer 173 #
Roth Famous 1006
Miss Erica Ellston X42

BW	+7 20%
WW	+55 10%
Milk	+23 30%
YW	+89 25%

BW	63	Adj. 205	631	WR	97	Adj. Scr.		Adj. Pelvic	
Adj. 365/YR		%IMF/Ratio		Adj. RE/Ratio		Rib Fat/Ratio		Rump Fat/Ratio	
CW	+10	Marb.	+0.36	RE	+0.23	30%	FAT	+0.053	
\$W	+32.92	2%	\$F	+26.26		\$G	+20.21	\$B	+39.03
Scr.		CED	+8	CEM	+9	15%	\$EN	-1.45	
Dam's Production:		IMF Ratios	None	RE Ratios	None				
BWR	1-92	WWR	1-97	YWR	None				
Sons @ Auction:	None	Daughters @ Auction:	None	Daughters In Herd:	None				
Grandam's Production:		Sons @ Auction:	None	Daughters @ Auction:	1-\$3000				
BWR	4-99	WWR	4-101	YWR	2-101				

- ★ A shoe-in heifer bull here! G194 ties as the third lowest BW EPD bull of the auction! He will add fleshing ability to replacement daughters.
- ★ Dam was a first calf heifer B2 daughter. B2's progeny record a light 98 BWR, yet stand at 102 WR, 104 YR, 110 IMF ratio, and 101 Ribeye ratio!
- ★ E138 has earned a WW EPD in the top 1% of the breed, YW EPD top 3%.
- ★ The bottom side of G194's pedigree is stacked with good disposition—both B2 and Famous proved they could sire very tame temperaments.
- ★ Grandam B320 produced the top selling spring bred heifer in our 2005 auction to Chris Jones. B320 weaned at 717 lbs., WR 113, YW 1026 lbs., YR 109.
- ★ Please read about great grandam X42 in the footnote of her 2008 son, lot 14. X42 can also be found in the pedigree of the standout heifer on the inside back cover.

17
Bull

H&K GRIDIRON G96

Reg. 16119685 Tattoo: L/R G96 2-11-2008

G A R Grid Maker #
TC GRIDIRON 258
TC Blackbird 7049 #

H&K Dark Star M163 #
ROSELLA OF ELLSTON Z196 #
C J Rosella 134

G D A R Traveler 044 #
G A R Precision 2536
T C Dividend 494 #
O C C Blackbird 902D
S A V Dark Star 1076
Blood Lady Thymac U222
C J Fix 31
C J Rosella 168

BW	+2.0
WW	+46
Milk	+21
YW	+76

BW	74	Adj. 205	650	WR	100	Adj. Scr.		Adj. Pelvic	
Adj. 365/YR		%IMF/Ratio		Adj. RE/Ratio		Rib Fat/Ratio		Rump Fat/Ratio	
CW	+5	Marb.	-0.02	RE	+0.35	15%	FAT	-0.011	15%
\$W	+29.23	10%	\$F	+17.13		\$G	+14.02	\$B	+26.41
Scr.	+0.23	CED	+5	CEM	+10	10%	\$EN	+5.28	
Dam's Production:		IMF Ratios	4-84	RE Ratios	4-105				
BWR	6-98	WWR	6-105	YWR	4-105				
Sons @ Auction:	1-\$3500	Daughters @ Auction:	1-\$1900	Daughters In Herd:	None				
Grandam's Production:		Sons @ Auction:	2-\$2150	Daughters @ Auction:	2-\$1925				
BWR	12-99	WWR	12-103	YWR	9-104				

- ★ Gridiron adds the superior phenotype that some of the Angus breed seems to have lost. We talk to registered breeders that have used Gridiron and they say the Gridiron calves are the ones that stand out in the calf crop.
- ★ Pathfinder dam Z196 is a hard-working cow that has calves with below average birth weights and above average weaning weights. She produced a \$3500 bull calf selling to repeat customer Lawrence Moffat. He was a full brother to G96. Her 9th heaviest heifer calf of the 2003 crop was purchased by Robert Pietan.
- ★ Z196 has a BW EPD of +.4 to rank her in the best 10% of current dams. Her 360 day calving interval proves her good fertility.
- ★ Grandam is still producing at 14 years of age. One set of twins is not included in her ratios above. 134 is the #2 lowest BW EPD Hoover-owned female at -1.4.
- ★ A Gridiron son to use on either heifers or cows. G96 can add lean muscle growth.



YEARLING BULLS





**Blueblood Lady
Ellston B153**
Owned by
Galaxy Beef, LLC
\$3200 full sister to lot 18



H&K Statesman G35 – Lot 20

18 Bull **H&K NEUTRON 377 G83**
Reg. 16119680 Tattoo: L/R: G83 2-09-2008

S A F Neutron # S A F Duchess 9029
S A NEUTRON 377 # S A F Power Fix #
S A Queen Susan 102 # S A Queen Susan 910
S A F Fix 8178 # S A F Power Fix #
BLUEBLOOD LADY ELLSTON N99 S A F Bardolier Lady 6153
Blueblood Lady Ellston B41 Summitcrest Revolution L011
Blueblood Lady Ellston 498

BW +1.4 30%
WW +38
Milk +15
YW +74

BW 68	Adj. 205 638	WR 98	Adj. Scr.	Adj. Pelvic
Adj. 365/YR	%IMF/Ratio	Adj. RE/Ratio	Rib Fat/Ratio	Rump Fat/Ratio
CW +20 10%	Marb. +.27	RE +.30 20%	FAT +.030	
\$W +22.76	\$F +18.16	\$G +18.97	\$B +43.66 30%	
Scr. +.73 25%	CED +4	CEM +10 10%	\$EN +10.45 15%	
Dam's Production:		IMF Ratios 5-120	RE Ratios 6-102	
BWR 11-97		WWR 11-102	YWR 7-104	
Sons @ Auction: 3-\$2100		Daughters @ Auction: 3-\$1950	Daughters In Herd: 2-104	

- ★ A full sister to G83 was a photo feature open heifer in our 2004 auction selling to Galaxy Beef. Another full sister to G83 works in the herd with 2-105 WR.
- ★ I would expect this bull to be calving ease. 377 made his calves long and slender at birth, and they came easily. Since G83 had a light birth weight, and he is out of a dam with a BW EPD in the top 15% of the breed, G83 could be used on heifers.
- ★ Repeat customer Nathaniel Jackson selected N99's last son at auction.
- ★ Dam N99 is the 12th top IMF ratio cow of the Hoover herd with 5-120 IMF ratio! She lost an eye long ago to an injury, but is still as quiet as they come. Is all you have to do is tell her which way you want her to move, gently push her in that direction, and she will obey. She doesn't get in a hurry. Actually, I think she is being a nice senior citizen because she doesn't want to go to the nursing home.

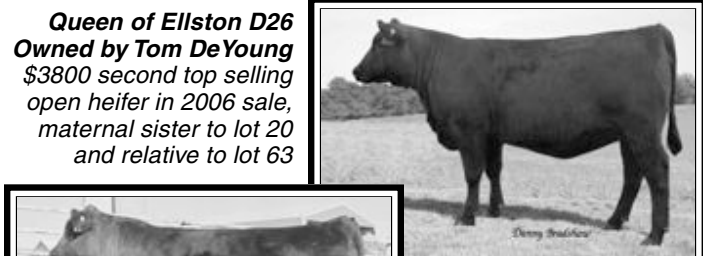
19 Bull **H&K GRIDIRON G86**
Reg. 16119682 Tattoo: L/R G86 2-10-2008

G A R Grid Maker # G D A R Traveler 044 #
TC GRIDIRON 258 G A R Precision 2536
TC Blackbird 7049 # T C Dividend 494 #
O C C Blackbird 902D
S A F Neutron #
ELBAMERE QUEEN V164 # S A Erica 205 #
Elbamere Queen N47 # S A F Fix 8178 #
Elbamere Queen F4

BW +2.3
WW +51 20%
Milk +17
YW +90 25%

BW 72	Adj. 205 670	WR 103	Adj. Scr.	Adj. Pelvic
Adj. 365/YR	%IMF/Ratio	Adj. RE/Ratio	Rib Fat/Ratio	Rump Fat/Ratio
CW +11	Marb. +.15	RE +.31 15%	FAT +.050	
\$W +27.41 25%	\$F +28.77 30%	\$G +13.42	\$B +33.60	
Scr. +.69 25%	CED +6	CEM +10 10%	\$EN +5.19	
Dam's Production:		IMF Ratios 6-106	RE Ratios 6-105	
BWR 8-95		WWR 8-103	YWR 6-106	
Sons @ Auction: 5-\$3350		Daughters @ Auction: 1-\$1600	Daughters In Herd: None	
Grandam's Production:		Sons @ Auction: 3-\$2975	Daughters @ Auction: 2-\$2900	
BWR 11-102		WWR 11-103	YWR 10-106	

- ★ A nine Pathfinder bull here! In the 2008 Pathfinder report, a little over one half of 1% of the dams evaluated were included in the prestigious report.
- ★ If you are looking for a bull to increase fleshing ability in your cow herd, this is probably the #1 bull of the auction to accomplish that goal. V164 and N47 aren't lacking in condition. . . I doubt they get cold in the winter.
- ★ Dam is a light birth weight cow that always weans a big calf. V164 has a 358 day calving interval on her 8 calves.
- ★ V164's first son was a photo feature selling to Tom Meinecke. Her top selling son was the third top selling bull in our 2007 auction to Mark Kurimski at \$6500. Other sons have sold to Stephen Eiberger, Matt Erickson, and Leroy Schumacher.
- ★ Pathfinder grandam N47 produced the 2006 photo feature Gridiron daughter selling to Hank Smith for \$4250. See her picture on page 40. N47 produced herd sires for Glen Hawley, Doyle Marquardt and Carl Parkhurst.
- ★ Suitable for use on heifers.



Queen of Ellston D26
Owned by Tom DeYoung
\$3800 second top selling
open heifer in 2006 sale,
maternal sister to lot 20
and relative to lot 63



H&K Midland E26
Owned by Brian Deling
\$3500 maternal brother to
lot 20 and relative to lot 63

20 Bull **H&K STATESMAN G35**
Reg. 16119666 Tattoo: L/R G35 1-31-2008

Sitz Greatplains 9520 O C C Great Plains 943G #
WOODHILL STATESMAN 54K-90N Sitz Pride 3038
Woodhill Lucy 666-54K Connealy Frontline #
V D A R Lucy 666
Great Western of Verola 478 Hoff Great Western S C 456 #
HAWLEY WEST GIRL 227 Verolas Blackbird Lass D005
Lickings Eldorado 371 806 Jauer Eldorado 371 821
Licking Rito 8211 R60

BW +2.5
WW +50 20%
Milk +24 25%
YW +78

BW 77	Adj. 205 688	WR 106	Adj. Scr.	Adj. Pelvic
Adj. 365/YR	%IMF/Ratio	Adj. RE/Ratio	Rib Fat/Ratio	Rump Fat/Ratio
CW +7	Marb. +.14	RE +.14	FAT +.034	
\$W +29.20 10%	\$F +17.55	\$G +13.48	\$B +27.84	
Scr. +.58	CED +3	CEM +4	\$EN +.08	
Dam's Production:		IMF Ratios 6-97	RE Ratios 6-103	
BWR 10-104		WWR 10-112	YWR 8-107	
Sons @ Auction: 3-\$2875		Daughters @ Auction: 2-\$2900	Daughters In Herd: 1-106	

- ★ Retaining 1/3 revenue sharing semen interest.
- ★ A bigger framed Statesman son out of a power cow. Use this bull to sire easy keeping females.
- ★ Dam 227 has produced three photo features in past auctions: bulls to Rich Meinders and Brian Deling, and a feature daughter to Tom & Carol's Angus of Wisconsin.
- ★ 227 is a very easy keeping cow with a 360 day calving interval. Her 2007 heifer calf was the #1 WW heifer of the crop at 767 lbs., WR 123!
- ★ 227's only daughter in the herd records 3-106 WR and is the dam of feature two year-old bull lot 63. This cow has been very tame since she was a baby. One of my favorites of her crop, she was also the 6th heaviest WW heifer at 765 lbs., WR 111. See pictures on page 27.
- ★ Have you ever noticed that if a cow has one good calf, she is likely to have another good calf? That is true with 227.
- ★ Don't judge a footnote by its length—judge it by its content. Sometimes I get long winded telling stories.



YEARLING BULLS



21 Bull **H&K CC&7 G88**
 Twin w/Cow Reg. 16126642 Tattoo: L/R G88 2-11-2008

S A F Connection #
SYDGEN C C & 7
 SydGen Forever Lady 4087
 R B M Neutron X3 192
QUEEN OF ELLSTON C355
 Queen of Ellston A345 #

SVF Gdar 216 LTD #
 S A F Royal Queen 5084
 SydGen 1407 Corona 2016
 S A F Forever Lady 8292
 H&K Neutron 377 X3
 Fairdale Design of I A R 736 #
 Summitcrest Expo F292
 Queen of Ellston R28

BW	+3.6
WW	+62 1%
Milk	+24 25%
YW	+105 3%

BW 68	Adj. 205 655	WR 101	Adj. Scr.	Adj. Pelvic
Adj. 365/YR	%IMF/Ratio	Adj. RE/Ratio	Rib Fat/Ratio	Rump Fat/Ratio
CW +21 10%	Marb. +.23	RE +.59 1%	FAT -.006 20%	
\$W +27.68 20%	\$F +39.68 5%	\$G +24.68 30%	\$B +54.44 10%	
Scr. .49	CED +3	CEM +5	\$EN -7.37	
Dam's Production:		IMF Ratios 2-63	RE Ratios 2-103	
BWR 2-108		WWR 2-100	YWR 2-101	
Sons @ Auction: None		Daughters @ Auction: None	Daughters In Herd: 1-116	
Grandam's Production:		Sons @ Auction: None	Daughters @ Auction: None	
BWR 5-108		WWR 5-106	YWR 4-108	

- ★ G88 and twin were born 10 days early. I get asked about bull/heifer twins—a bull twin with a heifer IS fertile; a heifer twin with a bull is generally NOT fertile.
- ★ C355 has maintained a 360 day calving interval. A daughter produced lot 22 bull.
- ★ C355 is known as the ribeye queen (note her pedigree name too). She scanned the biggest ribeye in her contemporary group at 13.8", ratio 133. Her Ribeye EPD of +.70 not only crushes the top 1% of current dams (+.50), but it ranks her #4 of all Hoover-owned females and 29th high Ribeye EPD of current dams in the breed!
- ★ C355 weaned at 705 lbs., WR 119, YW 1038 lbs., YR 118.
- ★ Grandam A345, a Pathfinder, scanned a 15.5" ribeye, ratio 128 to earn her a Ribeye EPD of +.76; 2nd largest of any female owned by Hoover Angus. A345 is the 23rd high Ribeye EPD female in the breed among 222,443 current dams! A345 has been the #1 ribeye ratio cow in the herd for two consecutive years with 4-119 ribeye ratio!
- ★ Great grandam R28 is the #2 cow in the nation for \$Yield Grade Value and A345 is close behind at #5! This has carried on to G88 as his \$YG Value is in the best 3% of the breed. In other words, he can help produce progeny that earn yield grade premiums when sold on the grid. Lots of red meat with little waste fat.
- ★ Read more about A345 in her daughter's footnote, lot 124.
- ★ Pre-scan, this bull ties as the #2 Ribeye EPD bull of the offering!

22 Bull **H&K STATESMAN G123**
 Reg. 16119691 Tattoo: L/R G123 2-14-2008

Sitz Greatplains 9520
WOODHILL STATESMAN 54K-90N
 Woodhill Lucy 666-54K
 S A V New Design 3105
QUEEN OF ELLSTON E152
 Queen of Ellston C355

O C C Great Plains 943G #
 Sitz Pride 3038
 Connealy Frontline #
 V D A R Lucy 666
 Bon View New Design 1407 #
 S A V Pride 1329
 R B M Neutron X3 192
 Queen of Ellston A345 #

BW	+1.4 30%
WW	+57 5%
Milk	+29 3%
YW	+94 15%

BW 72	Adj. 205 750	WR 116	Adj. Scr.	Adj. Pelvic
Adj. 365/YR	%IMF/Ratio	Adj. RE/Ratio	Rib Fat/Ratio	Rump Fat/Ratio
CW +5	Marb. +.32	RE +.30 20%	FAT +.018	
\$W +33.01 1%	\$F +30.44 25%	\$G +25.13 30%	\$B +40.50	
Scr. .59	CED +7 30%	CEM +8 25%	\$EN -8.63	
Dam's Production:		IMF Ratios None	RE Ratios None	
BWR 1-104		WWR 1-116	YWR None	
Sons @ Auction: None		Daughters @ Auction: None	Daughters In Herd: None	
Grandam's Production:		Sons @ Auction: None	Daughters @ Auction: None	
BWR 2-108		WWR 2-100	YWR 2-101	

- ★ G123 was the 15th heaviest bull calf of the spring 2008 Hoover crop!
- ★ G123 offers 10 EPDs and indexes in the top 1-30% of the breed! He has a very nice EPD profile that shows calving ease, growth, and favorable carcass traits.
- ★ About as complete of a package as you can find with a pedigree a little different for our customers that have been using 377 and Gridiron. G123 ties as the top Milk EPD bull of the auction.
- ★ Dam E152 is one of the most exciting young cows in the herd. To raise a 750 pound bull calf her first year, I'd say she is doing a mighty fine job. Her Milk EPD ranks in the top 3% of current dams, Ribeye EPD top 2%.
- ★ I won't repeat everything about C355 and A345, I'll make you look in the footnote of lot G88. Truly a very unique cow family that is doing a superb job for us.
- ★ C355 is sired by X3 192. See his picture on page 64. X3 192 is the maternal grandsire of lot 187 feature open heifer and lot 126 feature bred heifer.
- ★ If you need a bull to use on heifers, mark this bull as one to take a look at.



H&K New Intrigue E257
 Owned by Paul Smith
 \$3000 maternal brother
 to lot 23

23 Bull **H&K MIDLAND G85**
 Reg. 16119681 Tattoo: L/R G85 2-10-2008

BR Midland #
SVA MIDLAND 4089
 Thomas Erica 8603 #
 S A Neutron 377 #
PRIDE OF ELLSTON B61
 Pride of Ellston V61

Twin Valley Precision E161 #
 BR Royal Lass 7036-19
 Sitz Traveler 8180 #
 Thomas Erica 5053
 S A F Neutron #
 S A Queen Susan 102 #
 Bon View Paragon 2121 #
 Thymac Pride U91

BW	+1.9
WW	+49 25%
Milk	+16
YW	+84

BW 75	Adj. 205 715	WR 110	Adj. Scr.	Adj. Pelvic
Adj. 365/YR	%IMF/Ratio	Adj. RE/Ratio	Rib Fat/Ratio	Rump Fat/Ratio
CW +5	Marb. +.09	RE -.03	FAT +.020	
\$W +26.78 30%	\$F +23.65	\$G +11.11	\$B +24.88	
Scr. +.49	CED +5	CEM +7	\$EN +6.34 30%	
Dam's Production:		IMF Ratios 3-97	RE Ratios 3-92	
BWR 4-108		WWR 4-105	YWR 3-99	
Sons @ Auction: 3-\$2275		Daughters @ Auction: None	Daughters In Herd: None	

- ★ A little different pedigree here—a high performing Midland son. Midland 4089's first daughters came into production this past year and have nice udders. Dean Lenz purchased a Midland daughter in our 2008 auction and reports she raised a very nice calf by Extra.
- ★ BR Midland was the \$202,000 top selling bull in the history of the Midland bull test.
- ★ Dam B61 has a 361 day calving interval and has the potential to be on the 2009 Pathfinder list. She is one of the more moderate framed 377 daughters.
- ★ B61's second son was the 11th heaviest calf of his crop and a photo feature in our 2007 sale. He was the best 3105 of the crop. Repeat customer Paul Smith selected this bull for \$3000. Steve McKay and Dennis Stormer selected her other sons.
- ★ Calving book notes indicate B61 was a real quiet cow during calving.

24 Bull **H&K GRIDIRON G156**
 Reg. 16119697 Tattoo: L/R: G156 2-18-2008

G A R Grid Maker #
TC GRIDIRON 258
 TC Blackbird 7049 #
 S A Bando 598-1309
BLACKBIRD OF ELLSTON B360
 Blackbird of Ellston X160

G D A R Traveler 044 #
 G A R Precision 2536
 T C Dividend 494 #
 O C C Blackbird 902D
 Bon View Bando 598 #
 S A Wetokas Erica 1317
 Bon View Paragon 714 #
 Blackbird of Thymac Z143

BW	+3.7
WW	+47
Milk	+17
YW	+87 30%

BW 77	Adj. 205 636	WR 98	Adj. Scr.	Adj. Pelvic
Adj. 365/YR	%IMF/Ratio	Adj. RE/Ratio	Rib Fat/Ratio	Rump Fat/Ratio
CW +9	Marb. +.21	RE +.14	FAT -.018 5%	
\$W +22.82	\$F +27.34	\$G +21.90	\$B +40.03	
Scr. +.59	CED +3	CEM +8 25%	\$EN +6.40 30%	
Dam's Production:		IMF Ratios 2-116	RE Ratios 2-93	
BWR 4-104		WWR 4-101	YWR 2-105	
Sons @ Auction: 1-\$1800		Daughters @ Auction: None	Daughters In Herd: 1-105	

- ★ A full brother weighed in at 808 lbs. to be the 7th heaviest bull calf of the 2006 crop. He was the 4th heaviest yearling weight bull to come to auction that year.
- ★ Gridiron has built a reputation for heavy muscled calves that can put the "beef" back in cattle.
- ★ Dam is a high marbling cow that scanned a 7.17 IMF, ratio 148! She has a 364 day calving interval.
- ★ B360's first daughter works in the herd with 2-105 WR. This heifer was the one of the top scanning IMF females with 8.06 IMF, ratio 158. She is now the #1 Marbling EPD female owned by Hoover Angus!
- ★ Grandam X160 was purchased as a photo feature cow in our 2004 auction by Calvin Hyland. At that time, she recorded 2-106 WR.
- ★ Great grandam Z143 has been quite a cow maker with two Pathfinder daughters!
- ★ A good Gridiron son is like John's old cowboy hat. . . Nothing can take its place!



YEARLING BULLS





H&K CC&7 G45 – Lot 25

25 Bull **H&K CC&7 G45** Reg. 16119670 Tattoo: L/R G45 2-03-2008

S A F Connection #
SYDGEN C C & 7
 SydGen Forever Lady 4087

H&K Dark Star M163 #
BLACKCAP EMPRESS ELLSTON S35 #
 Blkcp Empress Ellston M214

SVF Gdar 216 LTD #
 S A F Royal Queen 5084
 SydGen 1407 Corona 2016
 S A F Forever Lady 8292
 S A V Dark Star 1076
 Blueblood Lady Thymac U222
 Doctor Baros 110
 Blackcap Empress Euston E195

BW	+1.2	25%
WW	+61	2%
Milk	+22	
YW	+93	15%

BW	71	Adj. 205	742	WR	115	Adj. Scr.		Adj. Pelvic			
	Adj. 365/YR		%IMF/Ratio		Adj. RE/Ratio		Rib Fat/Ratio		Rump Fat/Ratio		
CW	+13		Marb.	+23		RE	+32	15%	FAT	-.011	15%
\$W	+35.09	1%	\$F	+27.91	30%	\$G	+23.46		\$B	+45.01	30%
Scr.	+65	30%	CED	+6		CEM	+10	10%	\$EN	-1.77	
Dam's Production:		IMF Ratios 7-93			RE Ratios 7-103						
BWR 9-91		WWR 9-105			YWR 7-103						
Sons @ Auction: 5-\$3650		Daughters @ Auction: None			Daughters In Herd: 2-96						

- ★ Retaining 1/3 revenue sharing semen interest.
- ★ Heifer bull candidate with superb performance! Dam S35 is one of the lowest birth weight ratio cows in the herd. She consistently gives us light birth weight calves that get right up and grow. Her BW EPD of +.3 ranks in the best 10% of current dams.
- ★ S35 is the grandam of feature bred heifer lot 93. Read about her dam, Z4, and see pictures on page 37.
- ★ S35's sons have been picked by good cattlemen—Dave Hansen, Roy & Rick Reno, Mark & Chris Cadle, Ed Smith, and Mark Grossman. Her "cheapest" son has been \$3000 if that tells you anything about the quality of her calves. Two of these were photo features.
- ★ S35 is coming with another CC&7 calf—he/she will probably be here by the time catalogs are mailed out. It was such a superb combination the first time, we are doing it again!
- ★ At 11 years of age, S35 is still doing quite well and holding good condition.
- ★ Use this guy on heifers and have superb calves with excellent growth! Better yet, his \$Weaned Calf Value (\$W) above the top 1% of the breed and 2nd highest of any bull in this auction will ensure the most profitable type of calves and replacement daughters!

In the Dam's and Grandam's Production boxes provided on each animal:

- BWR: Dam's average Birth Weight Ratios on her calves
- WWR: Dam's average Wean Weight Ratios on her calves
- YWR: Dam's average Yearling Weight Ratios on her calves
- Sons & Daughters @ Auction: The number of sons or daughters sold at auction, and their average selling price.
- Daughters in herd: Dam's numbers of daughters working in the Hoover herd and the average wean ratio on their calves. Ex: 2-102 means two daughters have an average 102 wean ratio on their progeny. The first number indicates the number of daughters, *not* the number of progeny produced by the daughters.

26 Bull

H&K GRIDIRON G95

Reg. 16119684 Tattoo: L/R G95 2-11-2008

G A R Grid Maker #
TC GRIDIRON 258
 TC Blackbird 7049 #

S A Neutron 377 #
BLKCP EMPRESS ELLSTON B286
 Blackcap Empress R130

G D A R Traveler 044 #
 G A R Precision 2536
 T C Dividend 494 #
 O C C Blackbird 902D
 S A F Neutron #
 S A Queen Susan 102 #
 S A F Fix 8178 #
 Blackcap Empress J350 #

BW	+2.9	
WW	+49	25%
Milk	+16	
YW	+87	30%

BW	78	Adj. 205	638	WR	98	Adj. Scr.		Adj. Pelvic			
	Adj. 365/YR		%IMF/Ratio		Adj. RE/Ratio		Rib Fat/Ratio		Rump Fat/Ratio		
CW	+9		Marb.	+20		RE	+41	10%	FAT	+0.06	
\$W	+25.20		\$F	+26.58		\$G	+22.22		\$B	+40.15	
Scr.			CED	+5		CEM	+10	10%	\$EN	+6.83	30%
Dam's Production:		IMF Ratios 2-107			RE Ratios 2-104						
BWR 4-93		WWR 4-97			YWR 2-101						
Sons @ Auction: None		Daughters @ Auction: 2-\$2075			Daughters In Herd: None						
Grandam's Production:		Sons @ Auction: 2-\$2050			Daughters @ Auction: 2-\$1200						
BWR 9-101		WWR 9-98			YWR 5-98						

- ★ A Gridiron son with the potential to add more frame to his progeny.
- ★ A full sister to G95 was purchased by Thomas Doud in our 2007 auction. He knows how to pick the best ones!
- ★ Dam is a bigger framed cow with a rib or two extra length. She scanned a 6.19 IMF, ratio 128 to earn her a Marbling EPD in the top 30% of the breed.
- ★ B286 has a 359 day calving interval, R130 has a 361 day calving interval.
- ★ Grandam R130 has an exceptional disposition, she will let strangers pet her. She is a high marbling cow with 5-119 IMF ratio to make her the 14th highest IMF ratio cow in the Hoover herd!
- ★ R130's sire, Fix, was known to be one of the best cow makers in the herd's history. The great L759 cow that produced H&K Neutron 377 X3 was sired by Fix.
- ★ G95 is a nine Pathfinder bull, and will likely be ten in a year or two when Gridiron earns the Pathfinder title.

27 Bull

H&K STATESMAN G140

Reg. 16119694 Tattoo: L/R G140 2-16-2008

Sitz Greatplains 9520
WOODHILL STATESMAN 54K-90N
 Woodhill Lucy 666-54K

Summitcrest Sleep Easy F157
ELBAMERE QUEEN X148 #
 Elbamere Queen S44

O C C Great Plains 943G #
 Sitz Pride 3038
 Connealy Frontline #
 V D A R Lucy 666
 G A R Sleep Easy 1009 #
 Summitcrest Blackcap D010 #
 Bon View Emulation Ext 473 #
 Elbamere Queen N230

BW	+4.3
WW	+46
Milk	+21
YW	+76

BW	91	Adj. 205	622	WR	96	Adj. Scr.		Adj. Pelvic		
	Adj. 365/YR		%IMF/Ratio		Adj. RE/Ratio		Rib Fat/Ratio		Rump Fat/Ratio	
CW	+1		Marb.	+33		RE	+17		FAT	+0.16
\$W	+22.48		\$F	+17.13		\$G	+24.89	30%	\$B	+33.31
Scr.	+39		CED	+0		CEM	+5		\$EN	+3.47
Dam's Production:		IMF Ratios 4-113			RE Ratios 4-105					
BWR 6-110		WWR 6-108			YWR 5-107					
Sons @ Auction: 1-\$2400		Daughters @ Auction: 2-\$1900			Daughters In Herd: 1-96					
Grandam's Production:		Sons @ Auction: 2-\$1825			Daughters @ Auction: 1-\$2000					
BWR 9-97		WWR 9-100			YWR 7-104					

- ★ G140's short ears might make him bring a cheaper price, but certainly won't make him a lower quality bull. We even guarantee he will sire full size ears!
- ★ Statesman now has 22 daughters in production with an average 106 WR on their progeny! They are high milking cows.
- ★ X148 is a bigger framed cow that was a logical mating to Statesman. She is a high marbling cow, and G140 has the potential to be a top scanning IMF bull.
- ★ X148's only daughter in the herd was the 9th heaviest heifer calf of her crop at 754 lbs., WR 114. She was a curious little gal as a heifer calf. In our 2008 auction, a feature son of hers was purchased by Brad Rietveld for \$4000.
- ★ X148 had twins in 2007, and the bull twin was the best Midland of the crop. He injured his testicles post-weaning though. We kept X148 in the barn until we found a cow to transplant her heifer twin onto. X148 was enjoyable to work with. She never got uptight with all of the traffic through her area, even when David went through her pen multiple times a night while on night calving duty.
- ★ X148 has a 355 day calving interval. After having twins, she moved her calving up one week's time in 2008.
- ★ A maternal sister to G140 sold in last year's auction to Mike Grimm. At the time of our auction, she was the 8th high IMF EPD of any Hoover-owned female as well as the #6 \$Beef female.



YEARLING BULLS



28

Bull

H&K STATESMAN G108

Reg. 16119689

Tattoo: L/R G108

2-13-2008

Sitz Greatplains 9520
WOODHILL STATESMAN 54K-90N
 Woodhill Lucy 666-54K

S A Neutron 2164 #
MISS BLACKCAP ELLSTON X218 #
 Miss Blackcap Ellston S50 #

O C C Great Plains 943G #
 Sitz Pride 3038
 Connealy Frontline #
 V D A R Lucy 666
 S A F Neutron #
 S A Erica 742
 Bon View Emulation Ext 473 #
 Miss Blackcap Ellston N208

BW	+1.5	30%
WW	+45	
Milk	+24	25%
YW	+76	

BW	75	Adj. 205	644	WR	99	Adj. Scr.		Adj. Pelvic	
	Adj. 365/YR		%IMF/Ratio		Adj. RE/Ratio		Rib Fat/Ratio		Rump Fat/Ratio
CW	+4	Marb.	+ .23	RE	-.01		FAT	+ .020	
\$W	+28.73	15%	\$F	+17.49	\$G	+17.63	\$B	+29.07	
Scr.	+.52	CED	+7	30%	CEM	+8	25%	\$EN	+1.10
Dam's Production:		IMF Ratios 5-98			RE Ratios 5-100				
BWR		7-104			WWR			7-105	
YWR					5-105				
Sons @ Auction:		4-\$2850			Daughters @ Auction:			None	
					Daughters In Herd:			1-100	

- ★ A bull capable for use on heifers with a Calving Ease Direct (CED) top 30% and Calving Ease Maternal (CEM) top 25%. CED indicates how easily his calves will be born to first calf heifers when compared to other bulls while CEM indicates how easily his first calf heifer *daughters* will calve when compared to daughters of other bulls. Higher values are more favorable.
- ★ Sire Statesman has done an excellent job of lowering birth weights and still having pounds of weaning growth. He has a top 10% BW EPD and top 10% WW EPD. Statesman is a proven profitable bull for cattlemen that sell their calves by the pound at weaning with his \$W being the #49 top index of all current sires!
- ★ Dam X218 is good at giving us bull calves—only one daughter in her lifetime, and that daughter works in the herd. X218 has a 362 day calving interval.
- ★ X218 is a big, quiet cow. Sons work in the herds of Merrill Rinner, Kevin Partlow, Lowell Sunderman, and Rick Ellsworth. Kevin's bull was the third top scanning ribeye bull of our 2007 sale with a 15.9" ribeye, ratio 120.
- ★ X218's individual performance: WW 675 lbs., WR 105, YW 984 lbs., YR 114.
- ★ Pathfinder grandam has produced two Pathfinder daughters—X218 and Z215. Her only other daughter was a photo feature in our 2001 auction.
- ★ Read more about S50 in the footnote of lot 29.

29

Bull

H&K FUTURE DIRECTION G175

Reg. 16119700

Tattoo: L/R: G175

2-20-2008

C A Future Direction 5321 #
LAGRAND FUTURE DIRECTION3368
 Roth Miss Countess 1508

S A Gold Label 457
MISS BLACKCAP ELLSTON C279
 Miss Blackcap Ellston X218 #

G A R Precision 1680 #
 C A Miss Power Fix 308
 Bon View Bando 598 #
 Grubbs Miss Countess 252 #
 R A Gold Label 441
 S A Queen Idelette 1405 #
 S A Neutron 2164 #
 Miss Blackcap Ellston S50 #

BW	+2.1	
WW	+47	
Milk	+23	30%
YW	+84	

BW	69	Adj. 205	644	WR	99	Adj. Scr.		Adj. Pelvic	
	Adj. 365/YR		%IMF/Ratio		Adj. RE/Ratio		Rib Fat/Ratio		Rump Fat/Ratio
CW	+14	30%	Marb.	+ .29	RE	-.02	FAT	-.002	25%
\$W	+25.77		\$F	+24.40	\$G	+20.41	\$B	+41.98	
Scr.		CED	+6	CEM	+9	15%	\$EN	-.95	
Dam's Production:		IMF Ratios 1-92			RE Ratios 1-103				
BWR		3-99			WWR			3-100	
YWR					1-104				
Sons @ Auction:		None			Daughters @ Auction:			None	
Grandam's Production:		Sons @ Auction: 4-\$2850			Daughters @ Auction: None				
BWR		7-104			WWR			7-105	
YWR					5-105				

- ★ A Future Direction son capable of being used on heifers. He has balanced EPDs without any extremes one way or another. He offers an outcross pedigree for our repeat customers.
- ★ Future Direction has made strides at improving IMF in the herd with an average 107 IMF ratio on his progeny. His first daughters in production have an average 105 WR on their progeny!
- ★ A maternal sister to G175 sells as lot 155.
- ★ Dam C279 has a 342 day calving interval indicating good fertility.
- ★ Please read about Pathfinder grandam and great grandam in the footnote of lot 28.
- ★ Great grandam S50 produced Landi's 11th place carcass steer at the 2004 National Junior Angus Show. He made Certified Angus Beef® at 1155 lbs., Yield Grade 1. The beef industry would have a lot less sleepless nights if cattle like these were the norm rather than the exception (let alone more money in our pockets)! Her only two daughters in the Hoover herd both achieved Pathfinder status. A third daughter was a \$3000 photo feature bred heifer in our 2001 auction selling to Smith Farms.

**Blackbird of Ellston E199**

Owned by

Dr. Martin Nold

\$4100 second top selling female in 2008 auction and full sister to lot 30

30

Bull

H&K GRIDIRON G287

Reg. 16123319

Tattoo: L/R: G287

3-05-2008

G A R Grid Maker #
TC GRIDIRON 258
 TC Blackbird 7049 #

S A V Fame 9312
BLACKBIRD OF ELLSTON B78
 Blackbird of Ellston Z164

G D A R Traveler 044 #
 G A R Precision 2536
 T C Dividend 494 #
 O C C Blackbird 902D
 S A F Fame #
 S A V Juana 6232
 H&K Dark Star M163 #
 Blackbird of Ellston S179 #

BW	+2.3	
WW	+53	10%
Milk	+21	
YW	+86	

BW	76	Adj. 205	681	WR	105	Adj. Scr.		Adj. Pelvic	
	Adj. 365/YR		%IMF/Ratio		Adj. RE/Ratio		Rib Fat/Ratio		Rump Fat/Ratio
CW	+4	Marb.	+ .04	RE	+ .41	10%	FAT	+ .021	
\$W	+32.03	3%	\$F	+24.09	\$G	+14.75	\$B	+27.61	
Scr.	+.40	CED	+6	CEM	+10	10%	\$EN	+3.76	
Dam's Production:		IMF Ratios 3-99			RE Ratios 3-110				
BWR		4-95			WWR			4-104	
YWR					3-100				
Sons @ Auction:		None			Daughters @ Auction:			None	
Grandam's Production:		Sons @ Auction: 1-\$2000			Daughters @ Auction: 1-\$1550				
BWR		5-93			WWR			5-100	
YWR					3-98				

- ★ A full brother to the lead-off bred heifer in our 2008 auction, and second top selling female at \$4100 to Dr. Nold of South Dakota. She was a really gentle heifer that raised a nice heifer calf by Extra. She had a picture perfect udder—four small teats squarely placed. Her mother B78 also has a superb udder.
- ★ A maternal sister to G287 reigns as the #1 indexing female at Hoover Angus with 2-121 WR! Her first calf was the #2 adjusted weaning weight bull calf of the 2007 crop at 857 lbs., WR 124. He was sold private treaty to Held Farms for \$5000. Her next daughter was the 8th heaviest heifer calf of the spring 2008 crop.
- ★ Dam B78 is a +0 BW EPD, ranking her in the best 5% of current dams.
- ★ Look at the birth weight ratio to WW ratio spread on both B78 and Z164!
- ★ B78's \$Weaned Calf Value (\$W) of +36.51 crushes the top 1% of current dams at +32.99. B78 is the 8th high cow in production for \$W at Hoover Angus where 79 females rank in or above the top 1% of the breed for this important index!
- ★ Fourth generation dam Z143 has produced two Pathfinder daughters and one Pathfinder granddaughter! Few cows in the herd lay claim to this!

31

Bull

H&K GRIDIRON G99

Reg. 16119686

Tattoo: L/R G99

2-11-2008

G A R Grid Maker #
TC GRIDIRON 258
 TC Blackbird 7049 #

S A Neutron 377 #
BONNY OF ELLSTON C14
 G G Bonny 9270

G D A R Traveler 044 #
 G A R Precision 2536
 T C Dividend 494 #
 O C C Blackbird 902D
 S A F Neutron #
 S A Queen Susan 102 #
 TC Stockman 365 #
 G G Bonny 5167

BW	+4.7	
WW	+59	3%
Milk	+15	
YW	+104	4%

BW	85	Adj. 205	689	WR	106	Adj. Scr.		Adj. Pelvic	
	Adj. 365/YR		%IMF/Ratio		Adj. RE/Ratio		Rib Fat/Ratio		Rump Fat/Ratio
CW	+14	30%	Marb.	+ .16	RE	+ .34	15%	FAT	+ .017
\$W	+23.10		\$F	+39.85	5%	\$G	+17.79	\$B	+42.76
Scr.		CED	+2	CEM	+8	25%	\$EN	+2.93	
Dam's Production:		IMF Ratios 1-138			RE Ratios 1-96				
BWR		3-102			WWR			3-99	
YWR					1-98				
Sons @ Auction:		None			Daughters @ Auction:			1-\$1800	
					Daughters In Herd:			None	

- ★ A bigger framed Gridiron son that has high potential. If you sell calves by the pound, make an investment in a high growth Gridiron son. They will be the calves that bring the high dollar at the sale barn! He joins the +100 club for YW EPD.
- ★ The Gridiron—377 combinations have been extremely popular with both registered breeders and commercial cattlemen.
- ★ Dam C14 is a bigger gal that has 377's length. Her Scrotal EPD in the top 5% of the breed indicates high fertility.
- ★ Use this bull on cows, and you shouldn't have a tad of trouble calving. True growth cattle generally require a little more birth weight.
- ★ Mark this bull down, look him up. I think you will like him.

**YEARLING BULLS**



H&K Neutron 377 C30
Owned by John Rouse

\$4750 full brother to the dam of lot 32 and relative of lots 34 & 35

H&K Neutron 377 E30
Owned by Dr. Wayne Haisiak

\$3000 full brother to the dam of lot 32 and relative of lots 34 & 35

32 H&K GRIDIRON G115

Bull Reg. 16119690 Tattoo: L/R: G115 2-13-2008

G A R Grid Maker #
TC GRIDIRON B28
TC Blackbird 7049 #

S A Neutron 377 #
BLACKCAP EMPRESS ELLSTON B30
Blackcap Empress Ellston R30 #

G D A R Traveler 044 #
G A R Precision 2536
T C Dividend 494 #
O C C Blackbird 902D
S A F Neutron #
S A Queen Susan 102 #
H&K Dark Star M163 #
Blackcap Empress Ellston C57

BW	+2.2
WW	+53 10%
Milk	+14
YW	+90 25%

BW	72	Adj. 205	616	WR	95	Adj. Scr.		Adj. Pelvic	
Adj. 365/YR		%IMF/Ratio		Adj. RE/Ratio		Rib Fat/Ratio		Rump Fat/Ratio	
CW	+10	Marb.	+17	RE	+47 4%	FAT	+0.01 30%		
\$W	+27.60 20%	\$F	+28.00 30%	\$G	+21.90	\$B	+40.94		
Scr.	+46	CE	+6	CEM	+9 15%	\$EN	+7.36 25%		
Dam's Production:		IMF Ratios	2-101	RE Ratios	2-92				
BWR	4-104	WWR	4-93	YWR	2-100				
Sons @ Auction:	1-\$1800	Daughters @ Auction:	1-\$2000	Daughters In Herd:	None				
Grandam's Production:		Sons @ Auction:	4-\$3775	Daughters @ Auction:	1-\$1400				
BWR	9-98	WWR	9-106	YWR	9-105				

- ★ A very nice full brother to G115 sold in our 2008 auction to repeat customer Cort Jaeschke. At \$1800, this bull was one of the best bargains of the entire sale!
- ★ Dam B30 had a superb ultrasound scan: 6.49 IMF, ratio 133, ribeye 14.6", ratio 111. Her Ribeye EPD of +.42 ranks in the top 2% of current dams.
- ★ A full sister to B30 produced C16, the top selling bull of our 2005 sale at \$10,000. See his picture on page 17 and read about him in lot 36's footnote.
- ★ Pathfinder grandam R30 has produced four feature sons. R30 and her 8 daughter descendants working in the herd have weaned a total of 40 progeny with an average 104 WR! One Pathfinder daughter has produced seven sons averaging \$5400!
- ★ Read the last paragraph of lot 35's footnote about third generation dam C57.
- ★ Nine Pathfinders are represented here, indicating superior cow power.

33 H&K EXTRA G90

Bull Reg. 16119683 Tattoo: L/R: G90 2-11-2008

Nichols Extra H6 #
STEPLADDER EXTRA 5117
Star Rita Robin 150

TC Gridiron 258
ELLSTONS MISS BLACKBIRD E119
Ellstons Miss Blackbird Z235

N Bar Emulation EXT #
Nichols Eileen May F261
Rito 616 of 4B20 6807 #
Star Robin 952 #
G A R Grid Maker #
TC Blackbird 7049 #
H&K Dark Star M163 #
Ellstons Miss Blackbird S130 #

BW	+2.2
WW	+52 15%
Milk	+22
YW	+90 25%

BW	71	Adj. 205	678	WR	105	Adj. Scr.		Adj. Pelvic	
Adj. 365/YR		%IMF/Ratio		Adj. RE/Ratio		Rib Fat/Ratio		Rump Fat/Ratio	
CW	+9	Marb.	+19	RE	+17	FAT	+0.14		
\$W	+28.06 20%	\$F	+28.39 30%	\$G	+18.11	\$B	+36.51		
Scr.		CE	+6	CEM	+7	\$EN	-.84		
Dam's Production:		IMF Ratios	None	RE Ratios	None				
BWR	1-102	WWR	1-105	YWR	None				
Sons @ Auction:	None	Daughters @ Auction:	None	Daughters In Herd:	None				
Grandam's Production:		Sons @ Auction:	1-\$2500	Daughters @ Auction:	1-\$1900				
BWR	5-99	WWR	5-100	YWR	4-99				

- ★ Use G90 on heifers—a little different pedigree here. Most of the Extra calves were younger, and not old enough for this year's sale. Extra is the service sire to many of the spring bred heifers in this sale. Extra adds length and frame to his progeny.
- ★ E119 has a Ribeye EPD in the top 10% of current dams.
- ★ Grandam Z235 has a 360 day calving interval and is a low birth weight cow. Progeny have sold to Max Boles and Garry Durham.
- ★ Great grandam S130 is a Pathfinder with a Pathfinder maternal sister.
- ★ Eight Pathfinders are represented in G90's pedigree.

34 H&K CC&7 G26

Bull Reg. 16119663 Tattoo: L/R: G26 1-28-2008

S A F Connection #
SYDGEN C C & 7
SydGen Forever Lady 4087

S A V Fame 9312
BLACKCAP EMPRESS ELLSTON Z16
Blackcap Empress Ellston V6

SVF Gdar 216 LTD #
S A F Royal Queen 5084
SydGen 1407 Corona 2016
S A F Forever Lady 8292
S A F Fame #
S A V Juana 6232
S A Neutron 377 #
Blackcap Empress Ellston R30 #

BW	+4.4
WW	+63 1%
Milk	+24 25%
YW	+102 5%

BW	84	Adj. 205	745	WR	115	Adj. Scr.		Adj. Pelvic	
Adj. 365/YR		%IMF/Ratio		Adj. RE/Ratio		Rib Fat/Ratio		Rump Fat/Ratio	
CW	+15 25%	Marb.	+25	RE	+38 10%	FAT	+0.14		
\$W	+27.53 25%	\$F	+36.18 10%	\$G	+22.10	\$B	+46.87 25%		
Scr.	+1.01 10%	CE	+2	CEM	+7	\$EN	-6.42		
Dam's Production:		IMF Ratios	3-83	RE Ratios	3-103				
BWR	5-103	WWR	5-111	YWR	3-103				
Sons @ Auction:	2-\$3750	Daughters @ Auction:	None	Daughters In Herd:	2-97				
Grandam's Production:		Sons @ Auction:	4-\$3775	Daughters @ Auction:	1-\$1400				
BWR	6-100	WWR	6-103	YWR	6-100				

- ★ Retaining 1/3 revenue sharing semen interest.
- ★ A nice CC&7 son out of a cow family with 4 generations of good udders.
- ★ Maternal brothers sold to Trent Mayer for \$4100 and Brian Deling for \$3400.
- ★ Dam Z16 has a 355 day calving interval and grandam V6 has a 365 day interval.
- ★ Z16's 2005 calf was the #1 WW heifer calf of the crop at 805 lbs., WR 125!
- ★ V6 produced to back-to-back features. One was the \$10,000 H&K Gridiron C16 bull purchased by Nold Family Angus and CJ Angus. He was the #1 IMF bull of the 2005 sale and had a YW of 1402 lbs. C16 has been used in the Hoover herd and his progeny have an average 105 WR and 104 YR!
- ★ Pathfinder great grandam R30 has a 361 day calving interval and 9-98 BWR, 9-106 WR, and 9-105 YR. R30 and her 6 closest daughter descendants have grossed nearly \$90,000 in registered progeny sales from 2001-2008.
- ★ G26 has a beauty mark—a split ear. You will never forget who he is!

35 H&K CC&7 G202

Bull Reg. 16122445 Tattoo: L/R: G202 2-22-2008

S A F Connection #
SYDGEN C C & 7
SydGen Forever Lady 4087

S A Neutron 377 #
BLKCP EMPRESS ELLSTON V127 #
Blkcp Empress Ellston M127

SVF Gdar 216 LTD #
S A F Royal Queen 5084
SydGen 1407 Corona 2016
S A F Forever Lady 8292
S A F Neutron #
S A Queen Susan 102 #
S A V Dark Star 1076
Blackcap Empress Ellston C57

BW	+3.6
WW	+64 1%
Milk	+24 25%
YW	+106 3%

BW	85	Adj. 205	770	WR	119	Adj. Scr.		Adj. Pelvic	
Adj. 365/YR		%IMF/Ratio		Adj. RE/Ratio		Rib Fat/Ratio		Rump Fat/Ratio	
CW	+21 10%	Marb.	+32	RE	+35 15%	FAT	+0.51		
\$W	+28.71 15%	\$F	+39.91 5%	\$G	+18.48	\$B	+48.32 20%		
Scr.	+93 15%	CE	+3	CEM	+7	\$EN	-7.69		
Dam's Production:		IMF Ratios	5-93	RE Ratios	5-110				
BWR	8-104	WWR	8-108	YWR	5-110				
Sons @ Auction:	1-\$3750	Daughters @ Auction:	None	Daughters In Herd:	3-104				
Grandam's Production:		Sons @ Auction:	3-\$3000	Daughters @ Auction:	1-\$2100				
BWR	10-100	WWR	10-105	YWR	9-103				

- ★ Retaining 1/3 revenue sharing semen interest.
- ★ A very nice CC&7 son that will add growth and easy fleshing ability. This will be the bull everyone finds sale day. G202 was the 10th heaviest weaning weight calf of the 2008 crop. WW EPD above the top 1% of the breed! This is the third time V127 has produced a calf weaning in the top 15 calves of their respective crops.
- ★ Pathfinder dam V127 has a broad enough back you could just about sit your entire picnic blanket on her back and not have to worry about things falling off. . .
- ★ V127's only son was a very powerful bull selected by Mike McConahay. V127's daughter just raised her first calf, and it was the top rationing calf of its contemporary group. V127's first daughter might make Pathfinder in 2009.
- ★ A full sister to V127 produced Glen Hanson's co-top selling bull in our 2008 auction for \$10,000. Photo feature lot 139 dates back to V127. Another full sister produced Dr. Palmer's feature Friction son for \$4000. See his picture on page 29. Another maternal sister to V127 produced three feature daughters in past sales.
- ★ All these gals come from Landi's first Champion heifer, M127 (better known as Blimp). Blimp produced three feature sons, including the #1 WW EPD bull calf of the 1996 crop, and front cover bull. Roger Cerven selected her last son at \$4600.
- ★ The last cow in the pedigree, C57, was one of Joy and John's favorites. C57's daughter descendants have produced over \$138,000 in registered progeny sales from 1997-2008. Put this in perspective—in 1997, the year Blimp's first son sold, the yearling bulls in our sale averaged \$1,474. Undeniably a phenomenal cow family, dating back 11 generations of "Blackcap Empress" cows on file.



YEARLING BULLS





H&K Gridiron C16
Owned by Nold Family Angus & CJ Angus
\$10,000 sire of lot 36 and produced by the same cow family as lots 32, 34, and 35

H&K Right Time E214
Owned by James Baur
\$3200 maternal brother to lot 36

36 Bull **H&K GRIDIRON G285**
Reg. 16127426 Tattoo: L/R: G285 3-04-2008

TC Gridiron 258
H&K GRIDIRON C16
Blackcap Empress Ellston V6
Mogck New Design 878 C1181
GAMMER OF ELLSTON C67
C J Gammer 183 #

G A R Grid Maker #
TC Blackbird 7049 #
S A Neutron 377 #
Blackcap Empress Ellston R30 #
Bon View New Design 878 #
Mogck Black Lass C 935
Bon View Paragon 2121 #
C J Gammer 151

BW	+3.8
WW	+49 25%
Milk	+16
YW	+86

BW	83	Adj. 205	634	WR	98	Adj. Scr.		Adj. Pelvic	
	Adj. 365/YR		%IMF/Ratio		Adj. RE/Ratio		Rib Fat/Ratio		Rump Fat/Ratio
CW	+8	Marb.	+30	RE	+17		FAT	+0.29	
\$W	+22.14	\$F	+25.60	\$G	+20.92		\$B	+37.83	
Scr.	+66	CED	+2	CEM	+7		\$EN	+5.73	
Dam's Production:			IMF Ratios 2-122			RE Ratios 2-95			
BWR 3-108			WWR 3-101			YWR 2-104			
Sons @ Auction: 2-\$2950			Daughters @ Auction: None			Daughters In Herd: None			
Grandam's Production:			Sons @ Auction: 2-\$2525			Daughters @ Auction: 1-\$1900			
BWR 13-97			WWR 13-98			YWR 9-100			

- ★ Sire C16 is a past Hoover Angus sale graduate that topped our 2005 auction at \$10,000 to Nold Family Angus and CJ Angus. He was not only the top scanning IMF bull of the sale with a 5.26 IMF, ratio 134, but was one of the thickest, meatiest bulls we have ever sold. C16 weaned at 760 lbs., WR 106, YW 1402 lbs., YR 108.
- ★ C16's grandam, R30, has given rise to a superior line of daughters. R30 and her daughter descendants have produced just shy of \$90,000 in registered progeny sales since 2001. One Pathfinder daughter has produced seven sons averaging \$5400!
- ★ Dam C67 is the 9th high IMF ratio cow in the Hoover herd with 2-122 IMF ratio! She scanned a 5.17 IMF, ratio 115, ribeye 12.1", ratio 103.
- ★ C67's first son was a photo feature in our 2007 auction selling to James Baur. Her next son had the 2nd highest adjusted scrotal and the 3rd heaviest adjusted yearling weight of the yearling bulls in our 2008 offering. He was selected by Bill Ogden.

37 Bull **H&K NEW INTRIGUE G139**
Reg. 16119693 Tattoo: L/R G139 2-16-2008

Bon View New Design 1407 #
S A V NEW DESIGN 3105
S A V Pride 1329
S A Neutron 2164 #
FANTASIA OF ELLSTON A127 #
C J Fantasia 101

B/R New Design 036 #
Bon View Pride 664
Twin Valley Precision E161 #
S A V Pride 9266
S A F Neutron #
S A Erica 742
Oneills Gold Nugget
C J Fantasia 269

BW	+2.6
WW	+39
Milk	+23 30%
YW	+72

BW	82	Adj. 205	617	WR	95	Adj. Scr.		Adj. Pelvic	
	Adj. 365/YR		%IMF/Ratio		Adj. RE/Ratio		Rib Fat/Ratio		Rump Fat/Ratio
CW	+6	Marb.	+40 30%	RE	+01		FAT	+0.19	
\$W	+23.97	\$F	+15.92	\$G	+23.77		\$B	+36.76	
Scr.	+09	CED	+5	CEM	+8 25%		\$EN	+4.04	
Dam's Production:			IMF Ratios 3-89			RE Ratios 3-99			
BWR 5-98			WWR 5-102			YWR 3-105			
Sons @ Auction: None			Daughters @ Auction: 2-\$2625			Daughters In Herd: 1-95			

- ★ G139 was a thick guy at weaning and one of the top calves of his pasture.
- ★ Dam A127 helped make her sire a Pathfinder bull. Her first daughter was a photo feature in our 2006 auction selling to repeat customer Hank Smith.
- ★ Sire "Chunky" is so named because of his natural fleshing ability. For two years, he has run in our toughest fescue pasture, we were hoping he will lose some weight... but no luck. His "diet" in the winter is one small square bale of grass hay.
- ★ 3105 has been the biggest marbling improver used in our herd. A full brother to G139 was Candace Weeda's 2nd high marbling steer with a 7.87 IMF and the 2nd high gaining steer out of all 24 pen steers at the 2008 Union County Fair!

38 Bull **H&K GRIDIRON G102**
Reg. 16119687 Tattoo: L/R G102 2-12-2008

G A R Grid Maker #
TC GRIDIRON 258
TC Blackbird 7049 #
S A Neutron 377 #
GAMMER OF ELLSTON B249
C J Gammer 183 #

G D A R Traveler 044 #
G A R Precision 2536
T C Dividend 494 #
O C C Blackbird 902D
S A F Neutron #
S A Queen Susan 102 #
Bon View Paragon 2121 #
C J Gammer 151

BW	+3.4
WW	+54 10%
Milk	+15
YW	+96 10%

BW	77	Adj. 205	664	WR	102	Adj. Scr.		Adj. Pelvic	
	Adj. 365/YR		%IMF/Ratio		Adj. RE/Ratio		Rib Fat/Ratio		Rump Fat/Ratio
CW	+12	Marb.	+10	RE	+39 30%		FAT	+0.02 30%	
\$W	+24.73	\$F	+33.62 15%	\$G	+17.73		\$B	+39.66	
Scr.	+71 25%	CED	+4	CEM	+9 15%		\$EN	+5.13	
Dam's Production:			IMF Ratios 3-109			RE Ratios 3-100			
BWR 4-105			WWR 4-100			YWR 3-98			
Sons @ Auction: 3-\$1925			Daughters @ Auction: None			Daughters In Herd: None			
Grandam's Production:			Sons @ Auction: 3-\$2700			Daughters @ Auction: 1-\$1900			
BWR 13-97			WWR 13-98			YWR 9-100			

- ★ The Gridiron - 377 combination has been one of the best. Just look at the 9th high non-parent bull in the breed for WW EPD and 13th high bull in the breed for YW EPD, H&K Intensity F250. This bull was a Gridiron son out of a 377 dam that was the co-top selling bull of our 2008 auction. See his picture on page 50. The other co-top selling bull of the auction, H&K Acceleration F24, was also a Gridiron - 377 combination. Acceleration is a reference sire on page 3 and is the service sire to several of the spring bred heifers selling today.
- ★ Dam has yet to give us a replacement daughter—darn her!
- ★ B249's first sons have sold to Gary Green, Barker Farms, and Allen Norman. She has a 361 day calving interval. This combined with her Scrotal EPD in the top 10% of the breed indicate good fertility.
- ★ A maternal sister to B249 works in the Hoover herd with 3-101 WR. Her first son was a photo feature bull calf.
- ★ Nine Pathfinders are represented in G102's pedigree. Recommended for use on cows.

39 Bull **H&K GRIDIRON G147**
Reg. 16129259 Tattoo: L/R G147 2-17-2008

G A R Grid Maker #
TC GRIDIRON 258
TC Blackbird 7049 #
S A V Fame 9312
MISS KEYMURA 2176
Miss Keymura V72

G D A R Traveler 044 #
G A R Precision 2536
T C Dividend 494 #
O C C Blackbird 902D
S A F Fame #
S A V Juana 6232
H&K Dark Star M163 #
Miss Keymura P183

BW	+3.9
WW	+58 4%
Milk	+18
YW	+95 15%

BW	83	Adj. 205	733	WR	113	Adj. Scr.		Adj. Pelvic	
	Adj. 365/YR		%IMF/Ratio		Adj. RE/Ratio		Rib Fat/Ratio		Rump Fat/Ratio
CW	+7	Marb.	+09	RE	+48 4%		FAT	-.003 25%	
\$W	+28.30 15%	\$F	+31.05 20%	\$G	+19.41		\$B	+36.58	
Scr.	+37	CED	+2	CEM	+9 15%		\$EN	+3.48	
Dam's Production:			IMF Ratios 3-101			RE Ratios 3-104			
BWR 5-102			WWR 5-104			YWR 3-105			
Sons @ Auction: 1-\$3000			Daughters @ Auction: 1-\$1600			Daughters In Herd: 1-97			

- ★ One of the best Gridiron calves of the crop! He will be one of the heaviest bull calves sale day and has plenty of frame.
- ★ Don't wipe G147 off your list because he is "too big of birth weight". Compare him to lot 33 on the previous page, a "heifer" bull. If you mate these two bulls randomly to a comparable set of cows, and expose them to the same environments, it would be expected that G147's calves would be born, on average, with 1.7 pounds more birth weight than lot 33's calves. Is that really enough to squabble about? When used on cows, this bull shouldn't have an ounce of calving difficulty.
- ★ Proof that Gridiron progeny have been well accepted by our customers is the top selling bull AND female to ever leave Hoover Angus Farm were both Gridirons.
- ★ A maternal brother by 377 was a heavy muscled bull in our 2008 auction purchased by repeat customer Steve McKay. G147 has good muscle too.
- ★ Dam Z176 has one of the shortest calving intervals in the herd at 341 days.
- ★ Z176 scanned a 13.8" ribeye, ratio 117 to earn her a Ribeye EPD in the best 2% of current dams.
- ★ Maternal grandsire Fame is known for putting super udders on his daughters. He was our calving ease specialist for years.
- ★ Grandam V72 was a featured cow in our 2005 auction selling to repeat customer Randall Jeffries. At the time she sold, V72 ranked #28 in the Angus breed for % Retail Product (similar to the new \$Yield Grade). She scanned a 5.49 IMF, ratio 116, ribeye 12.5", ratio 115.
- ★ G147 has an extra big scrotal. This will certainly boost his Scrotal EPD!

40
Bull

H&K CC&7 G161

Reg. 16119698 Tattoo: L/R: G161 2-19-2008

S A F Connection #
SYDGEN C C & 7
SydGen Forever Lady 4087

H&K Neutron 377 V225
BLUEBLOOD LADY ELLSTON C228
Blueblood Lady Ellston J303 #

SVF Gdar 216 LTD #
S A F Royal Queen 5084
SydGen 1407 Corona 2016
S A F Forever Lady 8292
S A Neutron 377 #
Elbamere Queen F4
Claveracks Ferragamo 8013
Blueblood Lady Ellston 430

BW	+2.8
WW	+59 3%
Milk	+18
YW	+102 5%

BW 75	Adj. 205 670	WR 103	Adj. Scr.	Adj. Pelvic
Adj. 365/YR	%IMF/Ratio	Adj. RE/Ratio	Rib Fat/Ratio	Rump Fat/Ratio
CW +22 5%	Marb. +.30	RE +.39 10%	FAT +.021	
\$W +26.88 30%	\$F +37.78 10%	\$G +22.10	\$B +51.70 15%	
Scr. +1.03 10%	CED +2	CEM +4	\$EN -1.00	
Dam's Production:		IMF Ratios 1-105	RE Ratios 1-108	
BWR 3-106		WWR 3-102	YWR 1-105	
Sons @ Auction: 1-\$2000		Daughters @ Auction: None	Daughters In Herd: None	

- ★ A CC&7 calf that improves each time I see him. Be in on the ground floor with a CC&7 son! He will make a nice growth bull.
- ★ We have been pen breeding cows this fall with CC&7. He is running with heifers, and when we call him, he slowly meanders to the gate, walks in with the cow and breeds her. We say, "Thanks CC" and he walks back to his heifers. He is the easiest bull to get along with we have ever had.
- ★ CC&7's sire, Connection, has a Docility EPD of +34 to make him the second highest bull in the breed for docility! Maternal grandsire Corona is a +30 Docility EPD, which is also above the top 1% of the breed. As soon as CC&7 progeny have had docility scores through the AAA database, we would expect something very similar for CC&7. A full listing of the sires Docility EPDs can be found on the AAA website under the Sire Evaluation Report.
- ★ CC&7 scanned a 17.3" ribeye, ratio 130. G161 has the genetic potential that he might just follow in daddy's footsteps.
- ★ Dam C228 was the best V225 female produced at Hoover Angus. She has exceptional body length. She weaned at 718 lbs., WR 108, YW 1059 lbs., YR 110. She scanned a 13.7" ribeye, ratio 116 to earn her a Ribeye EPD in the top 10% of the breed.
- ★ Pathfinder grandam J303 is now retired from the herd, C228 was her last daughter. J303 recorded 13-100 BWR, 13-107 WR, 4-117 IMF ratio and 4-106 ribeye ratio. She was an easy fleshing cow that passed this on to her daughter.



H&K Gridiron G46 – Lot 42



Udder of Keymura Katy V47, dam of lot 42 and 125, grandam of lot 43. Photo taken at 9 years of age

42
Bull

H&K GRIDIRON G46

Reg. 16119671 Tattoo: L/R G46 2-04-2008

G A R Grid Maker #
TC GRIDIRON 258
TC Blackbird 7049 #

H&K Dark Star M163 #
KEYMURA KATY V47 #
Keymura Katy J213

G D A R Traveler 044 #
G A R Precision 2536
T C Dividend 494 #
O C C Blackbird 902D
S A V Dark Star 1076
Blueblood Lady Thymac U222
Eileenmere Lad 205
Keymura Katy 602

BW	+2.1
WW	+54 10%
Milk	+22
YW	+79

BW 76	Adj. 205 829	WR 128	Adj. Scr.	Adj. Pelvic
Adj. 365/YR	%IMF/Ratio	Adj. RE/Ratio	Rib Fat/Ratio	Rump Fat/Ratio
CW +4	Marb. +.05	RE +.56 1%	FAT -.012 10%	
\$W +34.36 1%	\$F +17.04	\$G +19.76	\$B +31.09	
Scr. +.28	CED +3	CEM +8 25%	\$EN +3.86	
Dam's Production:		IMF Ratios 6-90	RE Ratios 6-111	
BWR 8-104		WWR 8-112	YWR 6-107	
Sons @ Auction: 3-\$2300		Daughters @ Auction: None	Daughters In Herd: 2-111	

- ★ Retaining 1/3 revenue sharing semen interest.
- ★ The #2 adjusted weaning weight bull calf of the entire spring 2008 Hoover crop!
- ★ If you goal is to select a Gridiron bull that will add pounds of weaning growth to his calves and be able to save back superior daughters, this is the guy to buy. His \$Weaned Calf Value (\$W) above the top 1% of the breed ensures he will make profitable daughters.
- ★ Dam V47 has given G46 his length and frame while Gridiron has given him his muscle and pounds. V47 played a big part in his weaning weight too: her sons at auction plus G46 have weaned at an average 811 lbs.!
- ★ Sire Gridiron's Ribeye EPD is in the best 2% of the breed, dam V47's Ribeye EPD is above the top 1%! Pre-scan, G46 has the 3rd biggest Ribeye EPD of the yearling bulls selling.
- ★ A maternal sister to G46 was the #2 weaning weight heifer calf of spring 2007 crop at 753 lbs., WR 121. She sells as lot 125.
- ★ In 2004, V47 raised the 2nd heaviest bull calf of the crop that was purchased by repeat customer Ed Claycomb.
- ★ V47 is the 9th high ribeye ratio cow of the herd with 6-111 ribeye ratio. Daughter Z99 falls next in line with 5-111 ribeye ratio. Please read about Z99 in the footnote of lot 43 feature bull. Lot 43 was the #1 adjusted weaning weight bull calf of the spring 2008 Hoover crop. This is the 5th time (out of 6 years) Z99 has given us the #1-4 heaviest adjusted WW bull or heifer calf of the crop!
- ★ V47 is the #4 top \$Yield Grade (\$YG) female owned by Hoover Angus and the 26th high \$YG dam in the breed at +14.23! This crushes the top 1% of the breed at +11.10. High \$YG Values translate into high cutability and potentially more YG 1 and 2 cattle to earn grid premiums. Angus cattle have come a long way since the 1950s version of Angus cattle!
- ★ V47 is a Pathfinder cow (as indicated by the # symbol) and has a 360 day calving interval on her 8 calves.

41
Bull

H&K MIDLAND G171

Reg. 16119699 Tattoo: L/R: G171 2-20-2008

BR Midland #
SVA MIDLAND 4089
Thomas Erica 8603 #

H&K Neutron 377 Z7
PROUD LASSIE OF ELLSTON B166 #
Proud Lassie of Ellston Z165 #

Twin Valley Precision E161 #
BR Royal Lass 7036-19
Sitz Traveler 8180 #
Thomas Erica 5053
S A Neutron 377 #
Shottish V047
H&K Dark Star M163 #
S A Proud Lassie 1887

BW	+4.3
WW	+49 25%
Milk	+15
YW	+86

BW 82	Adj. 205 630	WR 97	Adj. Scr.	Adj. Pelvic
Adj. 365/YR	%IMF/Ratio	Adj. RE/Ratio	Rib Fat/Ratio	Rump Fat/Ratio
CW +9	Marb. +.15	RE +.02	FAT +.010	
\$W +20.70	\$F +25.60 30%	\$G +14.89	\$B +32.57	
Scr. +.36	CED +1	CEM +5	\$EN +6.59 30%	
Dam's Production:		IMF Ratios 3-102	RE Ratios 3-102	
BWR 4-110		WWR 4-109	YWR 3-105	
Sons @ Auction: 3-\$2350		Daughters @ Auction: None	Daughters In Herd: None	

- ★ We had a heck of a time with frozen ears last year, and G171 was one that didn't fare well on that aspect of things. This certainly won't affect his breeding though, and it may make him a bargain on sale day.
- ★ Dam B166 has a little more birth weight, but offers excellent growth. Her WW EPD of +63 (6 pounds above the top 1% of current dams) gives her the #14 high WW EPD among 331,786 Angus current dams!
- ★ Maternal grandsire Z7 is pictured on page 6 with the lot 1 bull.
- ★ B166 weaned at 790 lbs., WR 117, YW 1120 lbs., YR 113.
- ★ B166 has a 351 day calving interval. She followed in the footsteps of her mother in achieving Pathfinder status. B166's first three sons have sold to David Cheers, Tom Watkins, and Mitch Jones.
- ★ Grandam Z165 was purchased to start Shiloh Gennaro's Angus herd, and was Shiloh's first Pathfinder cow.
- ★ Our catalog is not written by a sale manager that has never seen the cattle. Rather, it is written by the ones who calve the cows, weigh the bulls, and wade the muck. If you have a question about our offering, please contact us. We can't answer the question if you don't ask it!




YEARLING BULLS





Danny Bradshaw ©

H&K Gridiron G20 – Lot 43



Keymura Katy of Ellston D45
Owned by
Mark & Trisha Haines
\$12,000 top selling female
in Hoover Angus history;
full sister to lot 43
and relative of lot 42

43 Bull **H&K GRIDIRON G20**
 Twin w/Cow Reg. 16124993 Tattoo: L/R G20 1-25-2008

TC GRIDIRON 258
 TC Blackbird 7049 #
 S A Neutron 377 #
KEYMURA KATY Z99 #
 Keymura Katy V47 #

G D A R Traveler 044 #
 G A R Precision 2536
 T C Dividend 494 #
 O C C Blackbird 902D
 S A F Neutron #
 S A Queen Susan 102 #
 H&K Dark Star M163 #
 Keymura Katy J213

BW	+3.6
WW	+57 5%
Milk	+20
YW	+94 15%

BW 70	Adj. 205 837	WR 129	Adj. Scr.	Adj. Pelvic
Adj. 365/YR	%IMF/Ratio	Adj. RE/Ratio	Rib Fat/Ratio	Rump Fat/Ratio
CW +15 25%	Marb. +.06	RE +.59 1%	FAT +.006	
\$W +30.00 10%	\$F +30.44 25%	\$G +17.25	\$B +40.72	
Scr. +.61 30%	CED +2	CEM +7	SEN +2.89	
Dam's Production:		IMF Ratios 5-93	RE Ratios 5-111	
BWR 4-112		WWR 4-115	YWR 3-109	
Sons @ Auction: 1-\$9500		Daughters @ Auction: 1-\$12,000	Daughters In Herd: 2-98	
Grandam's Production:		Sons @ Auction: 3-\$2300	Daughters @ Auction: None	
BWR 8-104		WWR 8-112	YWR 6-107	

- ★ Retaining 1/3 revenue sharing semen interest.
- ★ **THE #1 ADJUSTED WW BULL OF THE 2008 CALF CROP!**
- ★ G20's EPDs are a strict average of his sire and dam since he was a twin. If he would have been a single, his WW EPD would be significantly higher due to his tremendous performance.
- ★ **A full brother to G20, H&K Gridiron E160, has a +70 WW EPD – 16th high among 23,732 current sires and a +.66 Ribeye EPD – 27th high among 16,858 current sires!**
- ★ G20 offers extra frame, growth, and length. Pre-scan, he ties as the #2 Ribeye EPD bull of the offering!
- ★ Dam Z99 is quite possibly the best cow in the herd. I can't think of any cow that can say she has done this: In the past 5 years, she has raised two #1 WW bull calves of the crop ('08 and '06), the #3 WW heifer of the crop ('07), and two #4 WW heifer calves of the crop ('04 and '05)! Better yet, she has given birth to 8 live calves in 6 years. She is the 10th high indexing cow of the Hoover herd. If you would include her twins' ratios in her wean ratios, she would have 8-114 WR.
- ★ Despite the twins, Z99 has maintained a 352 day calving interval. Doc Hensley says she will be the first cow to calve in 2009. I would say her fertility is quite good.
- ★ I doubt that G20 will give you any more twins than any other bull in the offering, but I would guess his daughters will be good fertility. The #1 most used bull in the Angus breed for four years (878) was a twin.
- ★ Look at Z99 and you will find a cow with an extra rib or two in length and a picture-

- perfect udder. Four excellent sized teats placed evenly on a well-attached udder. She has a long slender head which aids in calving ease.
- ★ On to Z99's performance data: BW 70 lbs., WW 754 lbs., WR 118, YW 1082 lbs., YR 115, IMF 3.96, ratio 96, ribeye 14.0", ratio 119.
- ★ At +.65, Z99's Ribeye EPD stretches far above the top 1% of the breed (+.50). Her 5-111 ribeye ratio to make her the 10th top ribeye ratio cow of the herd proves she can pass these ribeye genetics on. Z99 has the 7th highest Ribeye EPD of any dam in production at Hoover Angus.
- ★ Z99's daughter was the \$12,000 top selling female in our 2006 auction purchased by repeat customers Mark & Trisha Haines. Her top selling bull in our 2007 auction, H&K Gridiron E160, was purchased by repeat customer Hawleys Gen X Angus who has now built a herd bull battery of 5 Gridiron sons. E160 was used in the Hoover herd. His progeny average 98 BWR and 104 WR.
- ★ Grandam V47 maintains a 360 day calving interval along with a superb udder—see her udder above lot 42. For a 9 year-old, I'd say that is as good as it gets. V47 records 6-111 ribeye ratio to slide her into the #9 position in the herd for high ribeye ratios. V47's individual scan was a 5.84 IMF, ratio 123, 13.5" ribeye, ratio 124 with a rib fat ratio 97 and rump fat ratio 76.
- ★ V47 and Z99 are quite a dynamic duo—in 2008 Z99 raised the #1 WW bull of the crop and V47 raised the #2 WW bull, he sells as lot 42. In 2007, V47 raised the #2 WW heifer calf (selling as lot 125) and Z99 raised the #3 WW heifer calf!
- ★ Last year was a busy day when repeat customer Glen Hanson came to look over the bulls in our 2008 auction. In 10 minutes time, the presumed lead off sale bull (lot 1) and the #1 WW bull of the crop would be born. Landi helps Glen sort off his top bull calf picks so he can look at them all side-by-side. Joy informs Landi that Z99 had just calved in the south barn—the pre-calving barn... not the barn they are supposed to calve in. She was 10 days away from her due date, so we hadn't moved her to the calving area yet. All the guys were busy at the time, so we were going to have to wait a while to move Z99 and her newborn. In a few minutes, Landi checks on Z99 while Glen is evaluating the bulls. Instead of licking off her calf, she was laying down between the hay ring and her newborn calf. Knowing this cow's history of having twins, Landi groans and yells to Joy, "She is going to have twins". Sure enough, in 10 minutes, calf #2 was on the ground and she is cleaning them both off.
- ★ Several days after her twins were born, we had a new mom for her heifer twin. Z99 cried when we took her little girl away, but I told her it was for the best. G20's tail got stepped on and he is missing the bottom half of his tail.
- ★ G20 has 10 Pathfinders in his pedigree. When Gridiron earns Pathfinder status, that will make 11. If you look at the top 25 bulls in the nation for number of progeny registered in 2008, NONE of these bulls have more than 10 Pathfinders in their pedigree. Significant? Absolutely.

2008 Pathfinder Report – SA Neutron 377 ranks #19 for number of Pathfinder daughters in the nation! 377 has a higher percentage of qualified daughters than all but two of the 18 sires that rank above him!

44

Bull

H&K GRIDIRON G203

Reg. 16123324

Tattoo: L/R: G203

2-23-2008

G A R Grid Maker #
TC GRIDIRON 258
 TC Blackbird 7049 #
 Bon View Paragon 714 #
ELBAMERE QUEEN T233 #
 Elbamere Queen R18

G D A R Traveler 044 #
 G A R Precision 2536
 T C Dividend 494 #
 O C C Blackbird 902D
 Bon View Paragon 1190 #
 Bon View Gammer 2070 #
 S A Neutron 2164 #
 Elbamere Queen C19

BW	+2.5
WW	+54 10%
Milk	+19
YW	+85

BW	74	Adj. 205	709	WR	109	Adj. Scr.		Adj. Pelvic	
	Adj. 365/YR		%IMF/Ratio		Adj. RE/Ratio		Rib Fat/Ratio		Rump Fat/Ratio
CW	+1	Marb.	+0.02	RE	+0.16	FAT	-0.11	15%	
\$W	+32.45	2%	\$F	+22.74	\$G	+14.52	\$B	+24.15	
Scr.	+0.60	CED	+5	CEM	+9 15%	\$EN	+6.20	30%	
Dam's Production:		IMF Ratios 6-88		RE Ratios 6-98					
BWR 8-96		WWR 8-106		YWR 6-102					
Sons @ Auction: 3-\$3100		Daughters @ Auction: 2-\$1000		Daughters In Herd: None					

- ★ Look at the Pathfinders in this bull's pedigree! Of the top 25 most-used Angus bulls in the breed in 2008, the most Pathfinders found in any one of these bulls' pedigrees is 10.
- ★ Gridiron and his dam have been featured on the back of the *Angus Journal* in the Whitestone ads where TC Blackbird 7047 is a featured donor.
- ★ G203 offers high performance like his dam did. T233 weaned at 661 lbs., WR 126, YW 893 lbs., YR 115.
- ★ A full brother was a photo feature in our 2007 auction selling for \$5000 to Jason Stoll. Other sons have been purchased by Richard Tiedje and Kenneth Kester.
- ★ Use this bull on heifers or cows.
- ★ Pathfinder T233 has a 360 day calving interval.
- ★ Todd Reynolds purchased a Gridiron yearling bull sight-unseen last year (he couldn't attend the sale because of the snowstorm). Todd used the bull on 22 cows last season and settled them all in 60 days. Todd reports the bull is in great condition this winter with no extra grain. He wants to get another bull like him!

45

Bull

H&K CC&7 G240

Reg. 16123330

Tattoo: L/R: G240

2-26-2008

S A F Connection #
SYDGEN C C & 7
 SydGen Forever Lady 4087
 TC Gridiron 258
EDELLA OF ELLSTON D270
 Edella of Ellston A98

SVF Gdar 216 LTD #
 S A F Royal Queen 5084
 SydGen 1407 Corona 2016
 S A F Forever Lady 8292
 G A R Grid Maker #
 TC Blackbird 7049 #
 S A Neutron 377 #
 Hawley Rain Girl 458 #

BW	+1.4 30%
WW	+66 1%
Milk	+22
YW	+116 1%

BW	65	Adj. 205	690	WR	106	Adj. Scr.		Adj. Pelvic	
	Adj. 365/YR		%IMF/Ratio		Adj. RE/Ratio		Rib Fat/Ratio		Rump Fat/Ratio
CW	+21 10%	Marb.	+0.28	RE	+0.51 3%	FAT	+0.13		
\$W	+30.98 5%	\$F	+49.70 1%	\$G	+24.00	\$B	+56.13 5%		
Scr.		CED	+9 15%	CEM	+10 10%	\$EN	-9.05		
Dam's Production:		IMF Ratios None		RE Ratios None					
BWR 2-95		WWR 2-104		YWR None					
Sons @ Auction: None		Daughters @ Auction: None		Daughters In Herd: None					
Grandam's Production:		Sons @ Auction: None		Daughters @ Auction: None					
BWR 5-104		WWR 5-100		YWR 3-109					

- ★ This bull has a lot of potential with a big spread birth weight to weaning weight. His WW EPD is 3 pounds *above* the top 1% of the breed, YW EPD 5 pounds *above* the top 1%! \$F is also above the top 1%. Better yet, he comes from a cow family that is second-to-none.
- ★ Dam D270 scanned a 13.8" ribeye, ratio 113 to earn her a Ribeye EPD above the top 1% of current dams.
- ★ Grandam A98 produced standout bred heifer lot 112. This heifer has a WW and YW EPD above the top 1% of the breed.
- ★ A98 weaned at 751 lbs., WR 121 to be the 4th heaviest heifer of her crop. It was no surprise though, as her dam 458 is the 13th highest indexing cow of the Hoover herd with 9-113 WR!
- ★ 458's last three calves have all been pettable since birth, and all have great dispositions. Repeat customer Rod Hart selected her last bull calf at auction for \$4500. Five of 458's calves have been in the top 10 adjusted weaning weight calves of their respective crops!
- ★ G240 ties as the second high YW EPD animal of the offering! His \$Beef Value is the second highest of the bulls selling—a superb choice if you feed out your calves and sell them on the grid or retain ownership!

H&K CC&7 G125
Lot 46 as a baby

H&K Neutron 377 C4
 Owned by David Hansen
 \$3500 maternal brother
 to lot 46

46

Bull

H&K CC&7 G125

Reg. 16119692

Tattoo: L/R G125

2-15-2008

S A F Connection #
SYDGEN C C & 7
 SydGen Forever Lady 4087

SVF Gdar 216 LTD #
 S A F Royal Queen 5084
 SydGen 1407 Corona 2016
 S A F Forever Lady 8292
 S A V Dark Star 1076
 Blueblood Lady Thymac U222
 H&K Crackerjack G153
 Blackbird of Ellston H6

BW	+1.4 30%
WW	+59 3%
Milk	+24 25%
YW	+87 30%

H&K Dark Star M163 #
BLACKBIRD OF ELLSTON S78 #
 Blackbird of Ellston M78 #

BW	74	Adj. 205	726	WR	112	Adj. Scr.		Adj. Pelvic	
	Adj. 365/YR		%IMF/Ratio		Adj. RE/Ratio		Rib Fat/Ratio		Rump Fat/Ratio
CW	+9 15%	Marb.	+0.19	RE	+0.40 10%	FAT	+0.02 30%		
\$W	+35.80 1%	\$F	+22.80	\$G	+22.16	\$B	+39.36		
Scr.	+0.71 25%	CED	+5	CEM	+9 15%	\$EN	-1.75		
Dam's Production:		IMF Ratios 8-95		RE Ratios 8-104					
BWR 10-94		WWR 10-104		YWR 8-102					
Sons @ Auction: 3-\$3700		Daughters @ Auction: 1-\$3750		Daughters In Herd: 2-108					

- ★ Retaining 1/3 revenue sharing semen interest.
- ★ This bull comes to auction as one of the highest recommended CC&7 sons to use on heifers! He will certainly add growth as proven by his 726 pound weaning weight, ratio 112, yet have lighter birth weights due to his dam's authentic low birth weight ratios.
- ★ Even though momma was 11 years old when she raised G125, she did a whale of a job. G125 is thick and has an attractive profile.
- ★ Pathfinder S78 is one of the lowest BW ratio cows in the herd, and has one of the lowest BW EPDs at -.1, top 5% of current dams.
- ★ S78's first three sons to come to auction have averaged a 15.8" ribeye, and this has earned S78 a Ribeye EPD in the top 5% of the breed. These sons were purchased by Verle Norris, David Hansen, and Steve Archer. The Archer family does their homework by highlighting a catalog and coming to the farm prior to the sale to look at bulls. David's bull was a photo feature in our 2005 auction, and an "awesome bull" as written in my cow production records. Verle's bull was the 6th heaviest calf of his crop, and S78's top selling son at \$4500.
- ★ S78 has two daughters in the Hoover herd, X78 and E105. X78 is the Pathfinder dam of H&K Acceleration F24, the service sire to many of the bred heifers selling today. Read about Acceleration on page 3. Acceleration was so named because he "accelerates" from a very low birth weight to high weaning weight, which is very true of this cow family. X78 has produced three back-to-back feature Gridiron sons that have averaged \$6100. We'll hold tight to her heifer daughter from the 2008 crop that was the 10th heaviest heifer calf of the crop.
- ★ G125 is the #1 bull of the offering for \$W, way above the top 1% of the breed! This means he would be an excellent choice if you sell your calves by the pound after weaning.

Hoover Angus Farm offers free boarding of bulls purchased in our sale until May 1, 2009. On or before May 1st, we ask that bulls be picked up so lots can be cleared to make room to A.I. 300 spring-calving females.

**YEARLING BULLS**

47

Bull

H&K FUTURE DIRECTION G220

Reg. 16123329

Tattoo: L/R: G220

2-24-2008

C A Future Direction 5321 #
LAGRAND FUTURE DIRECTION3368
 Roth Miss Countess 1508

G A R Precision 1680 #
 C A Miss Power Fix 308
 Bon View Bando 598 #
 Grubbs Miss Countess 252 #
 Steele Hi Flyer C12
 Miss Blackcap Ellston M79 #
 Bon View Paragon 2121 #
 Elbamere Queen L913

K L B Hi Flyer 76RE #
ELBAMERE QUEEN Z203 #
 Elbamere Queen P22

BW	+9	20%
WW	+49	25%
Milk	+28	5%
YW	+79	

BW	70	Adj. 205	676	WR	104	Adj. Scr.		Adj. Pelvic	
Adj. 365/YR		%IMF/Ratio		Adj. RE/Ratio		Rib Fat/Ratio		Rump Fat/Ratio	
CW	+10	Marb.	+20	RE	-.01	FAT	+006		
\$W	+32.93	1%	\$F	+18.86	\$G	+16.81	\$B	+34.04	
Scr.	+10	CED	+7	30%	CEM	+8	25%	\$EN	-2.56
Dam's Production:		IMF Ratios 6-91			RE Ratios 6-101				
BWR 5-106		WWR 5-105			YWR 4-107				
Sons @ Auction: 2-\$1975		Daughters @ Auction: 1-\$2600			Daughters In Herd: 2-112				
Grandam's Production:		Sons @ Auction: 3-\$2700			Daughters @ Auction: 1-\$1600				
BWR 9-102		WWR 9-105			YWR 8-105				

- ★ A full sister to G220 works in the herd with 2-116 WR! She raised the 7th heaviest heifer calf of the spring 2008 crop at Hoover Angus! She is a pretty, yet hard working female.
- ★ A full brother sold to Cort Jaeschke this past year.
- ★ Eight Pathfinders are represented in G220's pedigree.
- ★ Pathfinder dam Z203 has a 363 day calving interval, and a set of twins ratioing 104 and 105 are not included in her ratios above.
- ★ Grandam P22 is one of the few cows that has produced two Pathfinder daughters. Another daughter was a photo feature in our 2004 auction.
- ★ Great grandam L913 has given rise to one of the most profitable and productive cow families in the history of Hoover Angus. L913 and her 17 daughter descendants working in the herd have weaned a total of 79 progeny with an average 105 WR! Four of these females are Pathfinder, and another one may be added to the list in 2009.
- ★ G220 ties as the third highest Milk EPD bull of the auction.

48

Bull

H&K EXTRA G266

Reg. 16123337

Tattoo: L/R: G266

3-01-2008

Nichols Extra H6 #
STEPLADDER EXTRA 5117
 Star Rita Robin 150

N Bar Emulation EXT #
 Nichols Eileen May F261
 Rito 616 of 4B20 6807 #
 Star Robin 952 #
 S A F Neutron #
 S A Queen Susan 102 #
 H&K Dark Star M163 #
 Blackbird of Ellston M78 #

S A Neutron 377 #
BLACKBIRD OF ELLSTON E105
 Blackbird of Ellston S78 #

BW	+1.0	25%
WW	+52	15%
Milk	+20	
YW	+92	20%

BW	66	Adj. 205	664	WR	102	Adj. Scr.		Adj. Pelvic	
Adj. 365/YR		%IMF/Ratio		Adj. RE/Ratio		Rib Fat/Ratio		Rump Fat/Ratio	
CW	+16	20%	Marb.	+21	RE	+26	25%	FAT	+016
\$W	+28.93	15%	\$F	+30.38	25%	\$G	+18.61	\$B	+42.93
Scr.		CED	+7	30%	CEM	+9	15%	\$EN	+35
Dam's Production:		IMF Ratios None			RE Ratios None				
BWR 1-96		WWR 1-102			YWR None				
Sons @ Auction: None		Daughters @ Auction: None			Daughters In Herd: None				
Grandam's Production:		Sons @ Auction: 1-\$3700			Daughters @ Auction: 1-\$3750				
BWR 10-94		WWR 10-104			YWR 8-102				

- ★ One of only 3 Extra bulls to come to auction. Most of the Extra calves were younger, and thus not old enough for the sale. Extra is the service sire to many of the spring bred heifers selling today.
- ★ Only one animal in the bottom half of G266's pedigree is not a Pathfinder, E105, and she isn't old enough for the opportunity. 10 Pathfinders in this pedigree! This proves tremendous cow power—validated by a third party—the AAA.
- ★ Dam E105 was a first calf heifer with G266. Her Ribeye EPD of +.47 ranks her in the top 1% of the breed.
- ★ Dam is a full sister to Acceleration's dam, X78. Please read about X78 and S78 in the footnote of lot 46. A lot of neat info is in this bull's footnote!
- ★ Recommended for heifers. He stems from a line of very low birth weight females.

*Congratulations to Candace Weeda on her **Grand Champion Pen of 3 Steers** at the 2008 Union County Fair! Candace's steers purchased from Hoover Angus Farm had an ADG of 3.40 lbs/day, 14.4" ribeye, 7.43% IMF (two high choice steers, one choice), and an average yield grade of 2.6. The carcass value added per day on feed was \$3.516, over \$.50 more than the next highest pen of steers. Her pen was the highest average gaining pen and the highest average marbling pen out of 8 exhibitors. Candace used visual appraisal and carcass EPDs to select her steers last fall. Steers sired by: SAV New Design 3105, Woodhill Statesman 54K-90N, and LaGrand Future Direction 3368. Candace was also named the 2008 Union County Fair Queen!*

**H&K CC&7 G212 – Lot 49**

49

Bull

H&K CC&7 G212

Reg. 16123327

Tattoo: L/R: G212

2-24-2008

S A F Connection #
SYDGEN C C & 7
 SydGen Forever Lady 4087

SVF Gdar 216 LTD #
 S A F Royal Queen 5084
 SydGen 1407 Corona 2016
 S A F Forever Lady 8292
 G A R Grid Maker #
 TC Blackbird 7049 #
 TC Stockman 365 #
 G G Ida 436

TC Gridiron 258
LADY IDA OF ELLSTON C164
 G G Ida 9183

BW	+2.9	
WW	+67	1%
Milk	+24	25%
YW	+109	2%

BW	77	Adj. 205	749	WR	116	Adj. Scr.		Adj. Pelvic			
Adj. 365/YR		%IMF/Ratio		Adj. RE/Ratio		Rib Fat/Ratio		Rump Fat/Ratio			
CW	+12	Marb.	+32	RE	+47	4%	FAT	-.007	15%		
\$W	+31.27	4%	\$F	+41.83	3%	\$G	+28.30	20%	\$B	+52.36	10%
Scr.		CED	+6	CEM	+8	25%	\$EN	-8.64			
Dam's Production:		IMF Ratios 1-84			RE Ratios 1-104						
BWR 3-106		WWR 3-105			YWR 1-103						
Sons @ Auction: None		Daughters @ Auction: None			Daughters In Herd: None						
Grandam's Production:		Sons @ Auction: 1-\$1700			Daughters @ Auction: None						
BWR 8-95		WWR 8-106			YWR 7-104						

- ★ Retaining 1/3 revenue sharing semen interest.
- ★ This bull covers all the bases. His tremendous EPDs make him one of the top prospects in the offering and one of the highest potential growth bulls to be offered for sale anywhere in the nation. *His WW EPD is four pounds above the top 1% of all non-parent bulls in the nation!* A high performance maternal sister sells as lot 118.
- ★ Dam C164 might be one of Gridiron's first Pathfinder daughters with 3-105 WR and a 363 day calving interval. C164 scanned a 4.52 IMF, ratio 101, ribeye 13.7", ratio 116. Her Ribeye EPD ranks her in the best 2% of the breed.
- ★ C164 ranks #14 of the Hoover-owned females for highest \$Yield Grade Value in a herd where 33 females rank in or above the top 1% of the breed for this value! This proves lean muscle growth.
- ★ A full sister to C164 in the Hoover herd records 2-110 WR.
- ★ Grandam 9183 has achieved her own success in the herd. Her last 7 progeny have been heifers. Her 2008 calf was a very nice Statesman heifer that earned the 9th heaviest WW title.
- ★ G212 has the fourth highest WW EPD and fourth highest YW EPD of the yearling bulls in this offering!

**YEARLING BULLS**

50
Bull

H&K CC&7 G211

Reg. 16123326 Tattoo: L/R: G211 2-23-2008

S A F Connection #
SYDGEN C C & 7
SydGen Forever Lady 4087

SVF Gdar 216 LTD #
S A F Royal Queen 5084
SydGen 1407 Corona 2016
S A F Forever Lady 8292
G A R Grid Maker #
TC Blackbird 7049 #
S A Neutron 377 #
Blackbird of Ellston G100

BW	+2.2
WW	+64 1%
Milk	+20
YW	+108 2%

TC Gridiron 258
BLACKBIRD OF ELLSTON C43
Blackbird of Ellston V66

BW 71	Adj. 205 684	WR 106	Adj. Scr.	Adj. Pelvic
Adj. 365/YR	%IMF/Ratio	Adj. RE/Ratio	Rib Fat/Ratio	Rump Fat/Ratio
CW +17 20%	Marb. +.30	RE +.48 4%	FAT +.016	
\$W +30.16 10%	\$F +42.00 3%	\$G +24.69 30%	\$B +52.25 10%	
Scr.	CED +7 30%	CEM +9 15%	\$EN -4.68	
Dam's Production:		IMF Ratios 2-93	RE Ratios 2-95	
BWR 3-88		WWR 3-101	YWR 2-98	
Sons @ Auction: None		Daughters @ Auction: 1-\$1950	Daughters In Herd: None	

- ★ A proven powerful pedigree here. This bull would be capable of being used on heifers and has a WW EPD above the top 1% of the breed. Dam C43 is one of the lowest birth weight ratio cows in the herd.
- ★ C43 is a full sister to Hawley's \$6000 H&K Gridiron D35 bull, a bull that records progeny at 102 WR, 102 YR, 102 scrotal ratio, 109 IMF ratio, 100 ribeye ratio, 94 rib fat ratio, and 96 rump fat ratio! D35 was the fourth top selling bull in our 2006 auction. Bryan Hawley says, "Why AI my cows when my best calves are out of my Gridiron sons purchased at Hoovers?"
- ★ C43 scanned a 13.9" ribeye to earn her a Ribeye EPD in the top 1% of the breed.
- ★ C43's first daughter was purchased by Mike Carlson for \$1950. Her second daughter has been retained as a replacement.
- ★ Grandam was purchased by Shiloh Gennaro. She records 6-109 IMF ratio and 6-101 ribeye ratio.
- ★ Great grandam G100 raised her last heifer calf at 17 years of age. This heifer was the 5th heaviest heifer calf of the crop at 749 lbs.! G100's calves averaged 110 wean ratio.

51
Bull

H&K NEUTRON 377 G247

Reg. 16123332 Tattoo: L/R: G247 2-27-2008

S A F Neutron #
S A NEUTRON 377 #
S A Queen Susan 102 #

V D A R New Trend 315 #
S A F Duchess 9029
S A F Power Fix #
S A Queen Susan 910
Crackerjack Baros 61
Longs Queenmere 38
H&K Revolution 142
Blackbird Ellston 43

BW	+3.1
WW	+44
Milk	+14
YW	+78

H&K Crackerjack G153
BLACKBIRD OF ELLSTON R43
Blackbird of Ellston G100

BW 76	Adj. 205 671	WR 104	Adj. Scr.	Adj. Pelvic
Adj. 365/YR	%IMF/Ratio	Adj. RE/Ratio	Rib Fat/Ratio	Rump Fat/Ratio
CW +19 10%	Marb. +.16	RE +.28 20%	FAT +.012	
\$W +22.25	\$F +19.75	\$G +16.62	\$B +40.83	
Scr. +.94 15%	CED -1	CEM +6	\$EN +10.27 15%	
Dam's Production:		IMF Ratios 6-103	RE Ratios 6-101	
BWR 11-103		WWR 11-102	YWR 7-103	
Sons @ Auction: 3-\$2400		Daughters @ Auction: 1-\$1250	Daughters In Herd: 1-108	
Grandam's Production:		Sons @ Auction: 6-\$2550	Daughters @ Auction: 3-\$1375	
BWR 14-108		WWR 14-110	YWR 11-107	

- ★ G247 is out of a good ole' cow bred to stand-by Neutron 377. 377 was fundamental in bringing high growth and huge ribeye size to the Hoover herd. Seven of the top ten Ribeye EPD cows in production trace to 377.
- ★ A full sister to G247 has achieved Pathfinder status in the herd with 5-108 WR. A full brother was a photo feature in our 2002 auction selling to long-time repeat customer Randall Jeffries.
- ★ Dam R43 is getting to be an older cow now, and her EPDs certainly don't express her true worth. This reflects in G247's EPDs, and it will make him a bargain sale day. With 377 behind him though, he certainly won't disappoint you with the growth he puts in his calves.
- ★ At 17 years of age, grandam G100 raised the 5th heaviest heifer calf of the crop at 749 lbs., WR 116. Read more about another superb G100 daughter in the footnote of lot 50 bull.
- ★ Trace G247's cow family back for 8 generations of "Blackbird Ellston" cows at Hoover Angus Farm. The last Blackbird Ellston cow is by Revolutions Bell Boy when he was 12 years of age.



H&K CC&7 G262 – Lot 52



H&K Right Time E103
Owned by Rod Hart
\$4250 maternal brother
to lot 52

52
Bull

H&K CC&7 G262

Reg. 16123336 Tattoo: L/R: G262 2-23-2008

S A F Connection #
SYDGEN C C & 7
SydGen Forever Lady 4087

SVF Gdar 216 LTD #
S A F Royal Queen 5084
SydGen 1407 Corona 2016
S A F Forever Lady 8292
G A R Grid Maker #
TC Blackbird 7049 #
TC Stockman 365 #
G G Miss Erica 627

BW	+2.6
WW	+70 1%
Milk	+25 20%
YW	+116 1%

TC Gridiron 258
ERICA OF ELLSTON C265
G G Erica 9104 #

BW 73	Adj. 205 770	WR 119	Adj. Scr.	Adj. Pelvic
Adj. 365/YR	%IMF/Ratio	Adj. RE/Ratio	Rib Fat/Ratio	Rump Fat/Ratio
CW +15 25%	Marb. +.34	RE +.42 5%	FAT -.003 25%	
\$W +31.83 3%	\$F +48.03 1%	\$G +27.62 20%	\$B +55.69 5%	
Scr. +1.21 5%	CED +7 30%	CEM +9 15%	\$EN -11.81	
Dam's Production:		IMF Ratios 2-108	RE Ratios 2-94	
BWR 3-91		WWR 3-107	YWR 2-101	
Sons @ Auction: 1-\$4250		Daughters @ Auction: None	Daughters In Herd: None	
Grandam's Production:		Sons @ Auction: 3-\$3450	Daughters @ Auction: 1-\$1750	
BWR 7-103		WWR 7-105	YWR 5-106	

- ★ Retaining 1/3 revenue sharing semen interest.
- ★ **G262: 12th HIGH WW EPD AMONG 132,958 NON-PARENT ANGUS BULLS!** WW EPD 7 pounds above the top 1% of the breed, YW EPD 5 pounds above the top 1%! \$Feedlot also above the top 1%. G262 ties as the 2nd top WW EPD and 2nd top YW EPD bull in the auction! He is one of the top \$Beef bulls of the sale.
- ★ 10th heaviest bull calf of the spring 2008 crop!
- ★ An attractively made bull, with calving ease potential. He has a curious disposition and enjoys a good rub on the neck.
- ★ G262 was one of Joy's favorite bulls semen test day. He has a big scrotal—after all, C265's Scrotal EPD is in the top 5% of the breed, CC&7's top 2%.
- ★ Dam C265 has a good shot at making the 2009 Pathfinder report that will come out about a week after our sale. She has some of the lowest BW ratios in the herd.
- ★ C265's first son was a photo feature two year-old in our 2008 auction selling to repeat customer Rod Hart for \$4250. Her first daughter sells as lot 108.
- ★ Grandam 9104, a Pathfinder, has brought three sons to auction, all three photo features. They sold to Lonnie Hedinger, Allan Dolecheck, and Roger Vest. Lonnie's bull was packed with muscle and was one of the top selling two year-olds at \$5000.
- ★ Todd Reynolds purchased a very pretty full sister to C265.
- ★ This is just one of the many excellent CC&7 bulls of the auction. CC&7's price tag was \$39,000, but we can tell he was well worth every penny of it. You get what you pay for! Come to the farm prior to the sale and see CC&7. He will be going back to stud to freeze more semen for ABS, but hopefully not prior to our sale.
- ★ Where else can you go to a sale of any type and find 19 bulls to choose from that rank in or above the top 1% of the breed for WW EPD?



YEARLING BULLS





H&K Gridiron F67
Owned by Dwayne Scar
\$4250 full brother to lot 53

53 Bull **H&K GRIDIRON G269**
 Reg. 16123339 Tattoo: L/R: G269 3-02-2008

G A R Grid Maker # G D A R Traveler 044 #
TC GRIDIRON 258 G A R Precision 2536
 TC Blackbird 7049 # T C Dividend 494 #
 O C C Blackbird 902D
 S A Neutron 377 # S A F Neutron #
ROSELLA OF ELLSTON A52 # S A Queen Susan 102 #
 C J Rosella 394 # B A F Uncle Sam 3292
 C J Rosella 209

BW	+2.8
WW	+58 4%
Milk	+19
YW	+99 10%

BW 76	Adj. 205 689	WR 106	Adj. Scr.	Adj. Pelvic
Adj. 365/YR	%IMF/Ratio	Adj. RE/Ratio	Rib Fat/Ratio	Rump Fat/Ratio
CW +13	Marb. +.16	RE +.39 10%	FAT +.020	
\$W +29.47 10%	\$F +35.10 10%	\$G +18.26	\$B +41.52	
Scr. +.82 20%	CED +4	CEM +8 25%	\$EN +1.10	
Dam's Production:		IMF Ratios 3-106		RE Ratios 3-99
BWR 5-102		WWR 5-106		YWR 3-105
Sons @ Auction: 2-\$3025		Daughters @ Auction: None		Daughters In Herd: 1-115

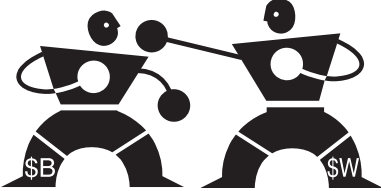
- ★ A full brother was a photo feature in our 2008 auction selling to Dwayne Scar for \$4250. He was the third bull in the ring out of 105 bulls. He claimed the #3 largest adjusted scrotal bull position and was the 4th heaviest yearling weight bull. A heck of a thick bull!
- ★ Dam A52 is a really quiet cow. After she calved in 2008, I would go in her pen and sit on her to get her up to go out and eat and drink. She is as gentle as they come! For the past three years, our calving book has a record telling that she is a docile cow when she calves. This is extremely important when you are calving indoors during the winter!
- ★ A52's first daughter produced the highest marbling bull in the history of Hoover Angus Farm, scanning a 7.40 IMF, ratio 172. He was purchased by Wayne & Jory Hunerdosse for \$3800. This bull was also the 11th top weaning weight bull calf of the 2007 crop.
- ★ A52 had a BW 71 lbs., WW 696 lbs., WR 112, YW 1115 lbs., YR 108, IMF 4.80, ratio 103, ribeye 15.0", ratio 107. She is an easy keeping cow.
- ★ Pathfinder grandam is no longer in the herd, but recorded 5-105 WR.
- ★ If you don't have a Gridiron son in your pasture yet, now would be the time to add one! This would be a darn good pick. Nine Pathfinders are represented in G269's pedigree.

It seems like the media enjoys blasting us with bad news.
How 'bout some good news?

- October 2008 marked the record-setting October for Certified Angus Beef® sales in the 30 year history of the brand! Despite the economy, consumers still demand high quality beef!
- The economy is affecting many aspects of consumers' lives, but the fresh meat and seafood category has a loyalty rate of more than 98%! This means customers won't stop purchasing fresh meat, even in tough times. Reducing expenditures for meat is at the bottom of consumers' lists. -December 2008 *Beef* magazine



Landi's truck says it all!



\$B v. \$W

Which is more important?

(In terms you can understand – by Landi)

All the rage is about \$B these days. . . but is \$B what your herd *really* needs? IT DEPENDS! Are you feeding out your calves or retaining ownership? Are you selling your calves at weaning? Are you retaining replacement daughters? These questions are *critical* to knowing if \$B or \$W is most important in your next herd sire purchase.

Both \$Beef Value (\$B) and \$Weaned Calf Value (\$W) are multi-trait indexes. In other words, they combine many economically important traits into one value designed to simplify the selection process for commercial cattle producers. Does this mean you can look only at \$B or \$W? NO! Knowing the strengths and weakness of your herd and selecting bulls with traits that compliment your cows is still very important.

If you sell your calves after weaning or backgrounding, the most important index to consider is \$W. The higher the \$W, the more potential you have for higher economic returns when selling calves at this time. *\$W is important for retaining replacement females—low birth, high growth, optimum milk, and an economical mature size are generally considered favorable.* Here is a peek at some (not all) of the interactions \$W takes into account.

- Birth weight—for example, bigger birth weights can be associated with more dystocia and death loss, therefore lower birth weights are treated more favorably.
- Weaning weight—higher weaning weights mean more pounds to sell, which is favorable. However, the higher energy requirements for heavier weaning weights are taken into account.
- Maternal milk—varying cow milk levels mean differences in weaning weights and costs related to lactation energy requirements.
- Mature cow size—to put it simply, big cows eat more feed. OK, it really is more complicated than that, but generally speaking, a smaller cow will require less inputs for maintenance, and therefore is favorable to the calculation of \$W.

If you feed out your calves or retain ownership and see them through the finishing phase, \$B is important because \$B considers postweaning performance and carcass value. \$B is a terminal index.

The growth factor in \$B is \$Feedlot Value (\$F). Note that \$F follows closely with growth EPDs—cattle with higher a YW EPD will also have a higher \$F value. Growth is critical to the feedlot operator's profitability.

The carcass component in \$B is the \$Grid Value (\$G). \$G considers *quality* components (Prime, Choice, Select, etc.) and *yield* components (Yield Grade 1, 2, etc.) and their associated premiums and discounts. As an example, an animal capable of producing progeny that are Prime, Yield Grade 1 should have superior \$G Values compared to an animal whose progeny are Select and Yield Grade 4. This is a drastic example used to show a point. I realize that Prime YG 1s are a rare commodity and hopefully the industry is making progress away from Select YG 4s.

54

Bull

H&K CC&7 G241

Reg. 16123331

Tattoo: L/R: G241

2-26-2008

S A F Connection #
SYDGEN C C & 7
 SydGen Forever Lady 4087

LaGrand Future Direction3368
ELBAMERE QUEEN ELLSTON D121
 Elbamere Queen Z163 #

SVF Gdar 216 LTD #
 S A F Royal Queen 5084
 SydGen 1407 Corona 2016
 S A F Forever Lady 8292
 C A Future Direction 5321 #
 Roth Miss Countess 1508
 K L B Hi Flyer 76RE #
 Elbamere Queen S160

BW	+7	20%
WW	+59	3%
Milk	+25	20%
YW	+97	10%

BW	Adj. 205	WR	Adj. Scr.	Adj. Pelvic
Adj. 365/YR	%IMF/Ratio	Adj. RE/Ratio	Rib Fat/Ratio	Rump Fat/Ratio
CW +17 20%	Marb. +.43 25%	RE +.15	FAT +.019	
\$W +33.57 1%	\$F +32.67 15%	\$G +24.54	\$B +50.04 15%	
Scr.	CED +10 10%	CEM +9 15%	SEN -5.78	
Dam's Production:		IMF Ratios None		RE Ratios None
BWR 2-101		WWR 2-100		YWR None
Sons @ Auction: None		Daughters @ Auction: None		Daughters In Herd: None
Grandam's Production:		Sons @ Auction: None		Daughters @ Auction: 1-\$1900
BWR 3-90		WWR 3-105		YWR 2-105

- ★ A new pedigree for many of our repeat customers. He is a superb candidate for heifers. His Calving Ease Direct (CED) EPD comes to the top of the auction and his BW EPD ties as the third lowest in the auction! There are three generations of very low birth weight cows on the bottom side of his pedigree.
- ★ Dam D121 was a high growth, high marbling heifer that scanned a 7.14 IMF, ratio 140 to be one of the highest of her contemporary group.
- ★ Pathfinder Grandam Z163 was lost before her time.
- ★ Third generation dam S160 records 9-93 BWR and 9-103 WR.
- ★ With a \$W above the top 1% of the breed, and low birth weight bred in for many generations, I'd put this guy on your list. He combines low birth, high growth, high maternal qualities and positive carcass values. Pre-scan, he offers one of the highest Marbling EPDs in the auction.

55

Bull

H&K GRIDIRON G258

Reg. 16123335

Tattoo: L/R: G258

2-28-2008

G A R Grid Maker #
TC GRIDIRON 258
 TC Blackbird 7049 #

Bon View Emulation Ext 473 #
MAID OF ELLSTON S34 #
 Maid of Ellston N167

G D A R Traveler 044 #
 G A R Precision 2536
 T C Dividend 494 #
 O C C Blackbird 902D
 N Bar Emulation EXT #
 Bon View Ruth 808
 H&K Black Fix K491
 Thymac Bummer Maid A40

BW	+4.5	
WW	+60	2%
Milk	+18	
YW	+93	15%

BW	Adj. 205	WR	Adj. Scr.	Adj. Pelvic
Adj. 365/YR	%IMF/Ratio	Adj. RE/Ratio	Rib Fat/Ratio	Rump Fat/Ratio
CW +9	Marb. +.16	RE +.41 10%	FAT +.007	
\$W +29.26 10%	\$F +28.29 30%	\$G +20.47	\$B +38.85	
Scr. +.38	CED -1	CEM +5	SEN +4.40	
Dam's Production:		IMF Ratios 9-111		RE Ratios 9-106
BWR 10-105		WWR 10-110		YWR 8-104
Sons @ Auction: 6-\$2575		Daughters @ Auction: None		Daughters In Herd: 1-99

- ★ Retaining 1/3 revenue sharing semen interest.
- ★ A standout since birth, literally. He was a bigger calf when he was born and grew like the dickens to be the 7th heaviest calf of the crop!
- ★ He is a perfect bull for someone wanting a little more birth weight to ensure exceptional weaning weight growth. Use G258 on cows.
- ★ A full brother sells as a photo feature, lot 62. Please read more about superior carcass cow S34 in this footnote.
- ★ S34, a Pathfinder, has given us a lot more bulls than females. She has a 360 day calving interval. Her sons have been purchased by Kenneth Crouch, Verle Norris, Gary Wedemeyer, Kevin Roberts, Ronald Nulph, and Terry Hostetler.
- ★ In last year's auction, repeat customer Todd Reynolds couldn't attend the sale due to the snowstorm we had that day. He called and left bids with us on 3-4 Gridiron sons. After the sale, Landi called Todd to inform him which bull he got. He asked how good the bull was, and she said he was a very nice bull. Todd was excited, but a little worried. Would the bull really be as good as Landi said??? After the weather got squared around, Todd along with Dave Taylor (the cattle data wizard for Todd that does more research on bull purchases than 99% of purebred breeders) came to look at the bull. They stood looking at the bull for a couple minutes without a word. Now they had me worried! Finally, one of them spoke up and said they couldn't believe how good he was for such a reasonable price! They were elated with the bull! With that being said, I can confidently give G258 a high recommendation for a sight-unseen buyer.

56

Bull

H&K FUTURE DIRECTION G294

Reg. 16123317

Tattoo: L/R: G294

3-07-2008

C A Future Direction 5321 #
LAGRAND FUTURE DIRECTION3368
 Roth Miss Countess 1508

Woodhill Fusion 177-70L
BLKCP EMPRESS ELLSTON C334
 Blackcap Empress Ellston A28

G A R Precision 1680 #
 C A Miss Power Fix 308
 Bon View Bando 598 #
 Grubbs Miss Countess 252 #
 Bon View New Design 878 #
 Woodhill Barbara 674-177
 S A Neutron 377 #
 Blackcap Empress J353

BW	+3.2	
WW	+49	25%
Milk	+25	20%
YW	+88	30%

BW	Adj. 205	WR	Adj. Scr.	Adj. Pelvic
Adj. 365/YR	%IMF/Ratio	Adj. RE/Ratio	Rib Fat/Ratio	Rump Fat/Ratio
CW +17 20%	Marb. +.32	RE +.18	FAT -.002 25%	
\$W +26.50 30%	\$F +27.56	\$G +23.57	\$B +48.00 20%	
Scr.	CED +3	CEM +7	SEN -1.55	
Dam's Production:		IMF Ratios 2-94		RE Ratios 2-98
BWR 3-102		WWR 3-103		YWR 2-102
Sons @ Auction: None		Daughters @ Auction: 1-\$2400		Daughters In Herd: None
Grandam's Production:		Sons @ Auction: None		Daughters @ Auction: None
BWR 4-100		WWR 4-99		YWR 3-105

- ★ The youngest bull in the auction, and this might make him a bargain sale day. He weighed in at 700 pounds at weaning time and offers a \$Beef value in the top 20% of the breed. I'd say mark this bull down.
- ★ Future Direction moderates frame and injects high marbling. His progeny average 107 IMF ratio! His daughters in production average 105 WR on their progeny!
- ★ Dam C334 produced a photo feature bred heifer in our 2008 auction as her first calf. This very tame bred heifer sold to Clint Means.
- ★ A full sister to C334 raised lot 57. Read more about the cow family in his footnote.
- ★ A full sister to grandam A28 raised feature bull calves lots 58 and 59. It's worth your time to read these footnotes and learn a little history on these gals.

57

Bull

H&K CC&7 G215

Reg. 16123328

Tattoo: L/R: G215

2-24-2008

S A F Connection #
SYDGEN C C & 7
 SydGen Forever Lady 4087

Woodhill Fusion 177-70L
BLKCP EMPRESS ELLSTON D241
 Blackcap Empress Ellston A28

SVF Gdar 216 LTD #
 S A F Royal Queen 5084
 SydGen 1407 Corona 2016
 S A F Forever Lady 8292
 Bon View New Design 878 #
 Woodhill Barbara 674-177
 S A Neutron 377 #
 Blackcap Empress J353

BW	+4.8	
WW	+62	1%
Milk	+23	30%
YW	+109	2%

BW	Adj. 205	WR	Adj. Scr.	Adj. Pelvic
Adj. 365/YR	%IMF/Ratio	Adj. RE/Ratio	Rib Fat/Ratio	Rump Fat/Ratio
CW +25 2%	Marb. +.34	RE +.39 10%	FAT +.003	
\$W +23.53	\$F +43.87 2%	\$G +24.98 30%	\$B +57.86 5%	
Scr.	CED +0	CEM +4	SEN -7.72	
Dam's Production:		IMF Ratios None		RE Ratios None
BWR 2-114		WWR 2-105		YWR None
Sons @ Auction: None		Daughters @ Auction: None		Daughters In Herd: None
Grandam's Production:		Sons @ Auction: None		Daughters @ Auction: None
BWR 4-100		WWR 4-99		YWR 3-105

- ★ This bull would be a great selection for our repeat customers who have been using Gridiron or Neutron and are looking for a high growth bull to use on cows. If you feed out your calves or retain ownership, take a look at this bull. He has the top \$Beef Value of any bull in the offering!
- ★ Dam's first calf was one of the nicest Extra calves of the crop, but got injured before yearling weight and ultrasound time.
- ★ D241 has impeccable performance data: BW 62 lbs., WW 681 lbs., WR 106, YW 1129 lbs., YR 113, IMF 6.07, ratio 119, ribeye 13.8", ratio 113. Her YW EPD is in the top 4% of the breed, WW and Ribeye EPDs top 10%.
- ★ Grandam A28 is a full sister to "Niner", Z9, the dam of photo feature lots 58 and 59. Please read about her in these bulls' footnotes.
- ★ A28 scanned a 15.3" ribeye to earn her a ribeye EPD in the top 2% of the breed.

Git-R-Bred with a Hoover bull

A strip of cement was being run in our bull lot and Joy leaves for about 5 minutes. . . When she returns, she sees written in big letters in the fresh cement "Git-R-Bred" compliments of Andy Myers. Andy also devised the "Got Semen?" slogan on the back of Landi's truck.



YEARLING BULLS





H&K CC&7 G28 – Lot 58



H&K Gridiron F125 – Lot 59

**Blackcap Empress
Ellston Z9**
Champion Angus Heifer at
the 2002 Ringgold County
Fair and dam of lot 58 and 59



Carl Stephens pets
lot 58 at our 2008 birthday
bash—just three weeks
after these bulls were
weaned!



H&K Statesman D319
Owned by Cort Jaeschke
\$4250 maternal brother
to lot 58 and 59



H&K Gridiron E109
Owned by Henry Langstraat
\$5000 full brother to lot 59 and
maternal brother to lot 58

58 Bull H&K CC&7 G28
Reg. 16119665

Tattoo: L/R G28 1-29-2008

S A F Connection #
SYDGEN C C & 7
SydGen Forever Lady 4087

S A Neutron 377 #
BLACKCAP EMPRESS Z9
Blackcap Empress J353

SVF Gdar 216 LTD #
S A F Royal Queen 5084
SydGen 1407 Corona 2016
S A F Forever Lady 8292
S A F Neutron #
S A Queen Susan 102 #
Summitcrest Revolution L011
Blackcap Empress F19

BW	+3.9
WW	+62 1%
Milk	+25 20%
YW	+104 4%

BW	84	Adj. 205	742	WR	115	Adj. Scr.		Adj. Pelvic	
		Adj. 365/YR	%IMF/Ratio			Adj. RE/Ratio	Rib Fat/Ratio		Rump Fat/Ratio
CW	+24	3%	Marb.	+26	RE	+39	10%	FAT	+010
\$W	+27.52	25%	\$F	+38.64	5%	\$G	+21.36	\$B	+52.35 10%
Scr.	+1.00	10%	CED	+0	CEM	+5	\$EN	-7.98	
Dam's Production:			IMF Ratios 6-105			RE Ratios 6-99			
BWR 5-103			WWR 5-111			YWR 4-106			
Sons @ Auction: 3-\$3925			Daughters @ Auction: None			Daughters In Herd: 1-104			
Grandam's Production:			Sons @ Auction: 5-\$2800			Daughters @ Auction: 3-\$1350			
BWR 11-105			WWR 11-111			YWR 11-110			

- ★ Retaining 1/3 revenue sharing semen interest.
- ★ A deep CC&7 son with extra bone and a super disposition.
- ★ Dam Z9's last four sons have all been photo features. Her 2007 son sells as lot 59. He was the 8th heaviest calf of his crop. Z9's first three sons have been purchased by Larry Peace, Cort Jaeschke, and Henry Langstraat, all repeat customers.
- ★ Z9 had twins her first year, and if they were included in her ratios, she would have 7-109 WR. She has a 352 day calving interval.
- ★ Z9 is quite an impressive cow to look at. I think she is the deepest bodied 377 daughter we have, and possibly the deepest cow in the herd. She was Landi's last Champion Angus Heifer at the Ringgold County Fair, and earned the nickname of "Niner".
- ★ Grandam J353 raised 3 of the top 10 weaning weight heifer calves of their respective crops, including a full sister to Niner weaning at 825 lbs. to be the #1 weaning weight heifer in 2003 (when J353 was 13 years old)! J353's first 377 son was a photo feature purchased by Charles Rodgers and Sons for \$3750.
- ★ J353 has a Pathfinder granddaughter working in the herd that is the 6th high ribeye ratio cow of the herd with 9-112 ribeye ratio!
- ★ Read more about Z9 and her cow family in the footnote of lot 59. Note the pictures also.

59 Bull H&K GRIDIRON F125
Reg. 15799643 Tattoo: L/R F125 2-17-2007

G A R Grid Maker #
TC GRIDIRON 258
TC Blackbird 7049 #

S A Neutron 377 #
BLACKCAP EMPRESS Z9
Blackcap Empress J353

G D A R Traveler 044 #
G A R Precision 2536
T C Dividend 494 #
O C C Blackbird 902D
S A F Neutron #
S A Queen Susan 102 #
Summitcrest Revolution L011
Blackcap Empress F19

BW	+2.9
WW	+57 5%
Milk	+20
YW	+94 15%

BW	78	Adj. 205/WR	801/116	Adj. 365/YR	1270/105	% IMF/Ratio	4.72/102	Adj. RE/Ratio	11.2/93	Rib Fat/Ratio	.39/105	Rump Fat/Ratio	.35/81	Scrotal	36.75	Pelvic	241
CW	+14	30%	Marb.	+12	RE	+33	15%	FAT	+008								
\$W	+29.86	10%	\$F	+30.44	25%	\$G	+16.92	\$B	+39.78								
Scr.	+39	CEM	+3	CEM	+8	25%	\$EN	+1.24									

Dam's Production:			IMF Ratios 6-105			RE Ratios 6-99		
BWR 5-103			WWR 5-111			YWR 4-106		
Sons @ Auction: 3-\$3925			Daughters @ Auction: None			Daughters In Herd: 1-104		
Grandam's Production:			Sons @ Auction: 5-\$2800			Daughters @ Auction: 3-\$1350		
BWR 11-105			WWR 11-111			YWR 11-110		

- ★ Retaining 1/3 revenue sharing semen interest.
- ★ F125 was born 6 days early, but his mom forgot to turn him before he was born, so he came into the world backwards. I guess it didn't hurt his performance though, as he was the 8th heaviest weaning weight calf of the crop!
- ★ F125 is the third-in-a-row feature for dam Z9, and her fourth-in-a-row sells as lot 58! Z9's first feature son was selected by Cort Jaeschke for \$4250, her next son selected by Henry Langstraat for \$5000. Henry's bull was a full brother to F125. Each year Henry comes to the farm prior to the sale to evaluate the bulls in their own surroundings where he can really compare bulls and then select the best bull for his money. Each year Henry selects one or more of the very best bulls in our offering!
- ★ Z9 ("Niner" as we call her) is one of our favorites. She was Landi's last Champion Angus Heifer at the Ringgold County Fair. Her ease of fleshing ability leaves her "well rounded" year around. She is as deep and thick as her yearling photo shows. Her udder is very even and has good teat size and length.
- ★ Niner has a 352 day calving interval on her 6 pregnancies (one set of twins is not listed in her BWR, WWR, and YWRs in the above boxes). Her twins were the first calves she had, and they had a combined total of 1443 pounds of adjusted weaning weight! We didn't have a cow for the heifer twin, so she had to raise them both herself. We were skeptical about this decision at the time because she was only a heifer, but she had had a calf every year since and has now moved up to a January calving time.
- ★ Niner's only daughter in the herd, and full sister to F125, records 3-104 WR.
- ★ Grandam J353 raised 3 of the top 10 weaning weight heifer calves of their respective crops, including a full sister to Niner weaning at 825 lbs. to be the #1 weaning weight heifer in 2003 (when J353 was 13 years old)!
- ★ The cow family F125 comes from spans 10 generations at Hoover Angus Farm. Can you name 10 generations of your family?



YEARLING BULLS / 2 YEAR OLD BULLS

