

Welcome to our 81st Anniversary Sale!

We would love to see you February 3, 12:00 noon as we certainly need your continued support. We think you will see some of the best cattle we have ever produced. I hate to say that each year's offering is better than the last, but if we are not improving year after year, we are letting you, our customers down. Note the introduction of our new herd sire at the bottom of the page, SydGen Determination BDE. He will add the growth, thickness, and mass our customers demand.

I could write a paragraph about all of our herd bulls as they all have a definite place in our program, but I will just brag about one. The first calves by CC&7 will be in the sale as they are an outstanding group. CC&7 just doesn't produce a poor one. Lot 1 is superior. Look him over from head to tail and he is hard to fault. Look at his numbers—he has the #7 highest WW EPD of 132,958 young bulls. He is also in the top 1% of the breed for YW EPD. You just don't do much better than this.

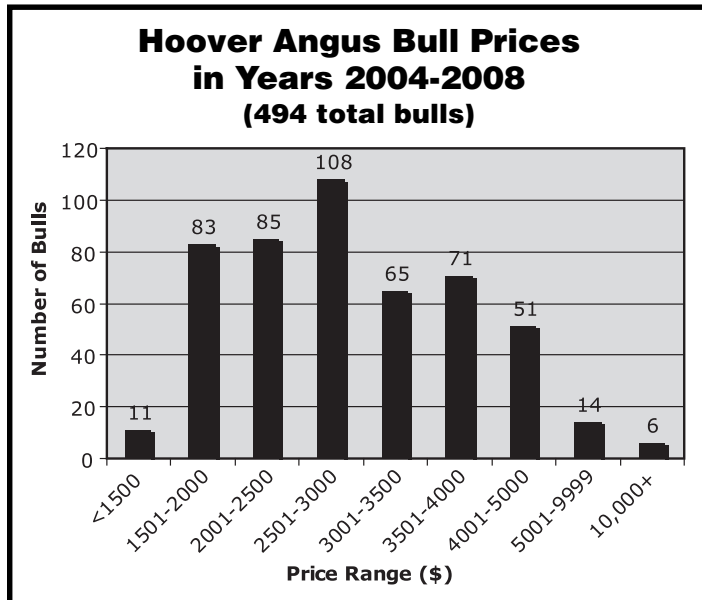
Joy and Landi have done an outstanding job in planning our breeding program. Their planned matings have produced an average WW EPD of +54 on the 92 bulls in the offering—top 10% of the Angus breed! 20% of the bulls in this offering have a WW EPD in or above the top 1% of the breed! When you sell calves by the pound, weaning growth is critical to profitability.

Please pick up information sale day about AngusSource® and how we will help get you started with this program. Find more information about the program at www.angussource.com.

For more information on \$ Values and our retained 1/3 interest on top sale bulls, visit the "sales" tab at www.hooverangus.com.

Thank you for your past and present business. The repeat customer is our hope for the future.

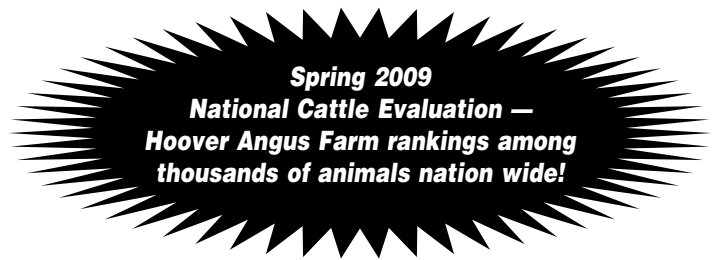
Sincerely,

Introducing our \$12,250 Investment in the Future, SydGen Determination BDE



The 4th top selling bull of the 2008 SydGen sale. This bull is a complete outcross pedigree for our herd and a high growth bull with a WW EPD in the top 1% of the breed.



Selling February 3, 2009:

- ★ **H&K CC&7 G18, Lot 1**
 - +75 WW EPD – 7th high among 132,958 non-parent bulls
- ★ **H&K CC&7 G56, Lot 2**
 - +70 WW EPD – 12th high among 132,958 non-parent bulls
- ★ **H&K CC&7 G262, Lot 52**
 - +70 WW EPD – 12th high among 132,958 non-parent bulls
- ★ **H&K Gridiron F521, Lot 81**
 - +.73 Ribeye EPD – 17th high among 70,131 non-parent bulls
- ★ **Queen of Ellston F258, Lot 124**
 - +13.95 \$YG – 43rd high among 95,032 non-parent females

Hoover Angus Farm Herdsires:

- ★ **SydGen CC&7**
 - +76 WW EPD – 10th high among 23,732 current sires
 - +125 YW EPD – 19th high among 23,732 current sires
 - +65.23 \$B – 91st high among 19,744 current sires
 - +55.30 \$F – 101st high among 23,732 current sires
- ★ **Woodhill Statesman 54K-90N**
 - \$W +38.27 – 49th high among 23,732 current sires
- ★ **SA Neutron 377**
 - +121 YW EPD – 23rd high among 23,732 current sires
 - +56.02 \$F – 88th high among 23,732 current sires

Past Graduates of Hoover Angus Sales:

- ★ **H&K Neutron 377 Z7**
 - +74 WW EPD – 12th high among current 23,732 sires
 - +126 YW EPD – 18th high among 23,732 current sires
 - +57.26 \$F – 75th high among 23,732 current sires
 - Owned by Wayne James of Missouri
- ★ **H&K Famous C100**
 - +70 WW EPD – 16th high among 23,732 current sires
 - Owned by Double K Ranch of Iowa
- ★ **H&K Intensity F250**
 - +73 WW EPD – 9th high among 132,958 non-parent bulls
 - +125 YW EPD – 13th high among 132,958 non-parent bulls
 - Owned by Glen Hanson of Iowa
- ★ **H&K Gridiron E160**
 - +70 WW EPD – 16th high among 23,732 current sires
 - +.66 Ribeye EPD – 27th high among 16,858 current sires
 - Owned by Hawleys Gen X Angus of Nebraska
 - A full brother sells as lot 43, relatives sell as lot 42 and 125
- ★ **H&K Neutron 377 X3**
 - +126 YW EPD – 18th high among 23,732 current sires
 - +60.30 \$F – 51st high among 23,732 current sires
 - Owned by RBM Livestock, Miller Angus, and Fox Angus of South Dakota
- ★ **H&K Focus Z14**
 - +12.67 \$YG – 71st high among 23,732 current sires
 - Owned by Valley View Angus of Iowa
- ★ **H&K Statesman E483**
 - +37.92 \$W – 69th high among 145,096 non-parent bulls
 - Owned by Bill Archer of Missouri
 - A full brother sells as lot 77

SYDGEN CC&7



TESTED AM FREE!



CC&7 as a yearling



SydGen Forever Lady 4087
a donor at SydGen,
and dam of CC&7

Reg. 15330743

Calved 1-13-06

SVF Gdar 216 LTD #
S A F CONNECTION #
S A F Royal Queen 5084

SydGen 1407 Corona 2016
SYDGEN FOREVER LADY 4087
S A F Forever Lady 8292

Traveler 124 G D A R #
G D A R Forever Lady 718
Bon View Bando 598 #
S A F Royal Queen 9022
Bon View New Design 1407 #
V N A R Perfection 142F 180K
S A F Neutron #
S A F Forever Lady 5138

\$W	+35.02	1%
\$F	+55.30	1%
\$G	+29.81	15%
\$B	+65.23	1%

BW	WW	Milk	YW	SCR.	CED	CEM	HP	(EPD)
+2.9	+76	+27	+125	+1.49	+7	+7		(ACC)
.77	.66	.19	.26	.36	+51	.18		(%)
	1%	10%	1%	2%				

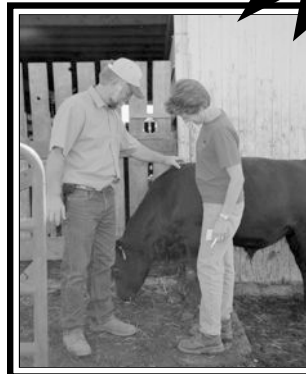
Carcass CW +24 .19 5% MB +46 .23 15% RE +48 .26 15% Fat +.008 .20

BW 80 lbs., WW 840 lbs., WR 119, YW 1467 lbs., YR 121,
IMF 4.20, ratio 94, Ribeye 17.3", ratio 130. 6 stars for feed efficiency!

- ★ WW EPD, YW EPD, \$Weaned Calf Value, \$Feedlot Value and \$Beef Value *all above the top 1% of the breed!*
- ★ After CC&7's first calf crop, his WW EPD jumped 20 pounds in one National Cattle Evaluation Update! Progeny are recorded in 17 herds; 13 of these herds used him successfully on heifers with an average calving ease score of 1.0.
- ★ In the spring 2008 Hoover crop, seven CC&7 bulls and five CC&7 heifers were among the top 15 weaning weight bull and heifer calves of the crop!
- ★ CC&7's first calf crop is approaching one year of age, and we couldn't be more pleased! Shortly after they were born, we knew they would lead the pack. Calves have excellent growth, muscle, and docile dispositions. Visitors to the farm from many states have picked the CC&7 calves as "the best of the crop". His progeny in seventeen herds have an average 100 Birth Weight Ratio and 103 Wean Ratio!
- ★ Nine CC&7 bull calves in the 2008 SydGen sale were the top-selling sire group, averaging \$580 per head over the average.
- ★ CC&7's name: Connection, Corona, and all 7 females in his pedigree have either served as a SydGen donor or been the dam of a SydGen donor. Four more cows off the pedigree have also served as donors for Sydenstrickers.
- ★ Connection is known for producing progeny with quiet dispositions, and CC&7 is no exception. Connection is a +34 for Docility with .74 accuracy. This makes him the #2 highest sire of all sires in the docility report. Corona is a +30, above the top 1% of the breed. Once CC&7 progeny have docility scores through AHIR, we would expect something very similar for CC&7. At our August 2008 birthday bash, farm visitors were found petting CC&7 calves in the lot—calves that had been weaned for just three weeks!
- ★ CC&7 was the top adjusted weaning weight bull in the fall 2006 SydGen offering. CC&7 went on to post the top ADG at 3.92 lbs./day, ratio 124, the top yearling weight at 1,467 lbs., ratio 121, and the top Ribeye measurement at 17.3", ratio 130. He is a 7 frame bull with exceptional length and muscle. His dam's first five brothers averaged \$5431 as calves.
- ★ Continuing the tradition of fertility established by his popular sire, CC&7 posted an adjusted scrotal measurement of 40.1 cm, and froze 127 units of high-quality

Among 20,000+ Angus Sires:

- 10th High WW EPD
- 19th High YW EPD
- 91st High \$Beef Value
- 101st High \$Feedlot Value



Jim & Lisa Buchholz scratch a CC&7 calf in August, just three weeks after calves were weaned!

- semen at ORIGen on his first collection day, just 5 days past his first birthday. This came after being halter broke just two weeks before being on display nearly a week in Denver!
- ★ CC&7 was the first Hoover-owned bull to make a trip to the National Western Stock Show in the display pen area in January 2007. CC&7 was also on display in Denver in 2008. We chose not to go to Denver in 2009, rather to run him with fall heifers, many of which sell today.
- ★ The long wait is over—our first CC&7 progeny sell—the largest selection of progeny and matings sells at Hoover Angus Farm, February 3, 2009! Featured progeny sell as lots 1, 2, 7, 25, 49, 52, 58, and 190. Featured females carrying his service include lots 110, 139, and 160.
- ★ Semen \$25, Certificates \$40. Semen available through Hoovers, SydGen, ABS, or ORIGen.
- ★ Use CC&7 to add growth, carcass quality, and superb disposition.

Got Semen?
We do. Order semen on any herd sire pages 2-5 (including CC&7 and Gridiron), and pick up your order sale day.



REFERENCE SIRE



TC Gridiron 258

"Gridiron"

Reg. 14237017
Calved 2-06-02



G D A R Traveler 044 #
G A R GRID MAKER #
G A R Precision 2536

T C Dividend 494 #
TC BLACKBIRD 7049 #
O C C Blackbird 902D

D H D Traveler 6807 #
G D A R Blackcap Lady 840 #
G A R Precision 1680 #
G A R Ext 2104
TC Dividend 963 #
Landmark Quality 9248
G D A R Traveler 7111 #
O C C Blackbird 709X #

\$W	+30.15	10%
\$F	+43.87	3%
\$G	+19.67	
\$B	+41.14	

BW	WW	Milk	YW	SCR.	CED	CEM	HP	
+4.1	+62	+17	+109	+61	+5	+9	+10	(EPD)
.93	.89	.57	.83	.83	.60	.47	.68	(ACC)
	2%		3%	30%		15%	25%	(%)
Carcass	CW +8 .22	MB +10 .32	RE +52 .41 2%	Fat +.003 .25				

BW 90 lbs., WW 764 lbs., WR 113, YW 1391 lbs., YR 110
IMF 4.09, Ratio 110, Ribeye 14.8", Ratio 109

- ★ Gridiron progeny stand out for their superior conformation and structural soundness. Cattlemen appreciate the natural thickness and muscle Gridiron puts in his progeny. His daughters are feminine and have become top producing cows at Hoover Angus. Gridiron daughters produced featured lots 1, 12, 49, 52, 60, 84, and 190 in this year's offering.
- ★ Gridiron now records over 1800 progeny in nearly 250 herds. He is a dominant force for WW, YW, and Ribeye EPDs. Combine this with his high \$Weaned Calf Value, and he is a logical choice for ranchers who sell their calves by the pound and retain replacement females. His WW EPD, YW EPD, Ribeye EPD, and \$W Index all rank in the top 1-10% of current Angus sires. In addition to being a big ribeye bull, Gridiron is four stars for tenderness.
- ★ In the spring 2008 calf crop, the top two adjusted weaning weight bull calves were sired by Gridiron; they sell as lots 42 and 43. The top adjusted weaning weight heifer was also sired by Gridiron. Six of the top 15 weaning weight bull calves of the 2008 crop were direct Gridiron progeny, 5 were raised by Gridiron daughters. For three consecutive years, a Gridiron son has been the #1 weaning weight bull calf of the spring Hoover crop.
- ★ The top selling bull at \$13,000 and top selling female at \$12,000 ever to leave Hoover Angus were sired by Gridiron.
- ★ Gridiron's dam is a \$30,000 Whitestone Foundation donor and Gridiron's sire is the \$23,000 GAR Grid Maker leased to Select Sires. GAR Precision 2536 is the highest income-producing cow in the history of the Angus breed with more than \$7.5 million in progeny sales to date.
- ★ Semen is available through Hoovers and Genex, \$18/straw, \$40/certificate.
- ★ Use Gridiron for growth, muscle, and phenotypic appeal.

TESTED AM FREE!

"Extra"

Reg. 15308905

Stepladder Extra 5117

Calved 2-14-05

N Bar Emulation EXT #
NICHOLS EXTRA H6 #
Nichols Eileen May F261

Rito 616 of 4B20 6807 #
STAR RITA ROBIN 150
Star Robin 952 #

Emulation N Bar 5522 #
N Bar Primrose 2424
Nichols Black Ink D220
Nichols Eileen May B241
D H D Traveler 6807 #
Rita 4B20 of OFB1 Bando
Schurrtop Supreme #
Star Robin 6148

\$W	+27.76	20%
\$F	+43.81	4%
\$G	+19.91	
\$B	+49.33	15%

BW	WW	Milk	YW	SCR.	CED	CEM	HP	
+1.4	+57	+22	+107	+45	+9	+6	+9	(EPD)
.60	.47	.21	.33	.32	.45	.18	.47	(ACC)
	30%	5%	4%	15%				(%)
Carcass	CW +19 .19 15%	MB +39 .24 25%	RE +04 .28	Fat +.027 .21				

BW 78 lbs., WW 742 lbs., WR 110, YW 1444 lbs., YR 111
IMF 4.45, Ratio 115, Ribeye 15.1", Ratio 109

- ★ Extra was a \$10,000 investment made in the spring of 2006. Extra may be the bull with the most length of body in the Hoover herd bull line-up. He truly is a mile long!
- ★ Extra has a good disposition and is the service sire to many of the females selling. He has a bit bigger frame, which should nicely compliment our Gridiron, Statesman, 3105, and Right Time daughters.
- ★ An Extra son was the top marbling bull of our 2008 auction, and the top marbling bull ever produced at Hoover Angus Farm. The top scanning IMF bull of the fall crop is an Extra son, lot 80. Extra progeny are high marbling and easy fleshing.
- ★ Extra progeny are shorter gestation length. In our spring 2008 calf crop, heifers calved an average of 4.61 days early when carrying an Extra calf.
- ★ Use Extra for added length, frame, and balanced EPDs.

H&K Acceleration F24

"Acceleration"

Reg. 15799637
Calved 1-29-07



G A R Grid Maker #
TC GRIDIRON 258
TC Blackbird 7049 #

S A Neutron 377 #
BLACKBIRD OF ELLSTON X78 #
Blackbird of Ellston S78 #

G D A R Traveler 044 #
G A R Precision 2536
T C Dividend 494 #
O C C Blackbird 902D
S A F Neutron #
S A Queen Susan 102 #
H&K Dark Star M163 #
Blackbird of Ellston M78 #

\$W	+33.38	1%
\$F	+37.38	10%
\$G	+7.23	
\$B	+30.87	

BW	WW	Milk	YW	SCR.	CED	CEM	HP	
+.5	+60	+19	+102	+1.04	+8	+11	+10	(EPD)
.37	.27	.19	.27	.35	.26	.16	.16	(ACC)
	2%		5%	10%	25%	2%		(%)
Carcass	CW +13 .11	MB -.03 .17	RE +.45 .20 5%	Fat +.047 .13				

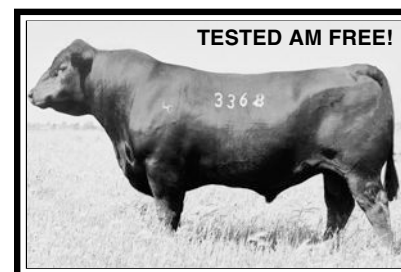
BW 70 lbs., WW 772 lbs., WR 112, YW 1399 lbs., YR 108

- ★ "Acceleration" is so named because of his low birth weight to high weaning weight spread. He has a hard-to-find EPD package with tremendous EPDs in 3 economically important (but distinctly different) areas: Growth (WW EPD), Maternal (\$Weaned Calf Value), and Calving Ease (CEM and BW). He was the lead-off and co-top selling bull in our 2008 production sale. Acceleration is co-owned with Hawleys Gen X Angus of Arcadia, NE, and Palmer Angus of Wellman, Iowa. Heifers sell bred to Acceleration.
- ★ Acceleration is backed by three generations of Pathfinder dams; every animal in the bottom half of his three generation pedigree is a Pathfinder! Dam X78 records 7-96 birth weight ratio, 7-109 wean ratio, and 6-104 yearling ratio. She maintains a 361 day calving interval. She is an easy fleshing, more moderate framed 377 daughter with a superb udder. Her 2008 heifer calf, and full sister to Acceleration, was the 10th heaviest weaning weight heifer calf of the crop. X78's three-in-a-row feature Gridiron sons have averaged \$6100.
- ★ Grandam S78 records 10-94 birth weight ratio, 10-104 wean ratio, 8-102 yearling ratio, and has a 366 day calving interval.
- ★ Use Acceleration for low birth weight to high weaning growth and added thickness.

LaGrand Future Direction 3368

**"Future
Direction"**

Reg. 14393636
Calved 1-10-03



G A R Precision 1680 #
C A FUTURE DIRECTION 5321 #
C A Miss Power Fix 308

Bon View Bando 598 #
ROTH MISS COUNTESS 1508
Grubbs Miss Countess 252 #

Tehama Bando 155 #
9J9 G A R 856
S A F Power Fix #
C A Lady Eight 1015
Tehama Bando 155 #
Bon View Dora 56 #
TC Dividend 963 #
D G Miss Countess 535

\$W	+29.54	10%
\$F	+19.75	
\$G	+29.94	10%
\$B	+49.73	15%

BW	WW	Milk	YW	SCR.	CED	CEM	HP	
+1.6	+44	+30	+78	-.06	+8	+8	+9	(EPD)
.74	.63	.30	.54	.53	.48	.26	.47	(ACC)
		4%			25%	30%		(%)
Carcass	CW +13 .23	MB +52 .29 10%	RE +08 .36	Fat -.005 .26 25%				

BW 93 lbs., WW 710 lbs., WR 103, YW 1275 lbs., YR 102
IMF 5.28, Ratio 122, RE 12.6", Ratio 99

- ★ Tested AM Free.
- ★ Future Direction is helping moderate birth weight and brings positive carcass traits to the Hoover herd. His calves are born light, but are thick and meaty. He doesn't sacrifice bone even though he is a low birth weight bull.
- ★ Future Direction progeny have the potential to do well in the feedlot as well as make good functional cows. Future Direction daughters have an average 105 wean ratio on their progeny.
- ★ Mike Christensen purchased a Future Direction son that came in as the 2nd top adjusted weaning weight bull of the 2005 crop at 853 lbs., WR 120 for \$6000.
- ★ Sire CA Future Direction 5321 is a proven Genex bull that ranked #16 in the breed for registrations in 2008. He is one of the top proven bulls of the breed for marbling and ribeye.
- ★ Use Future Direction for low birth weight, carcass quality, and more moderate mature size with top maternal qualities.



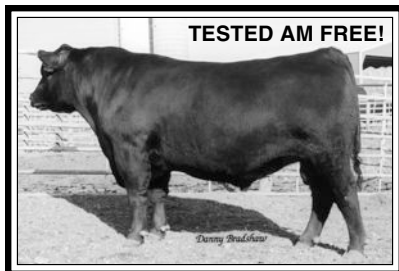
REFERENCE SIRES



S A V New Design 3105

"3105"

Reg. 14455320
Calved 2-17-03



B/R New Design 036 #
BON VIEW NEW DESIGN 1407 #
Bon View Pride 664

Twin Valley Precision E161 #
S A V PRIDE 1329
S A V Pride 9266

V D A R New Trend 315 #
B/R Blackcap Empress 76
G A R Sleep Easy 1009 #
Bon View Pride 1551 #
G A R Precision 1680 #
W C C Blackcap C9
Leachman Right Time #
S A R Ritros Pride 7805 #

\$W	+24.63
\$F	+29.87 25%
\$G	+36.60 2%
\$B	+52.65 10%

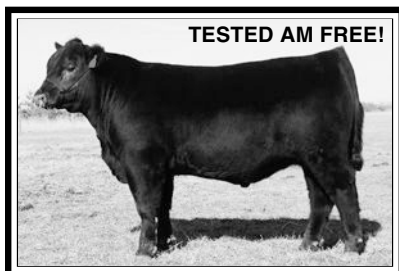
BW	WW	Milk	YW	SCR.	CED	CEM	HP	
+1.9	+43	+31	+88	-.56	+9	+10	+13	(EPD)
.82	.73	.39	.66	.65	.59	.34	.58	(ACC)
		3%	25%		15%	10%	5%	(%)
Carcass CW +6 .23		MB +.71 .30 3%		RE +.21 .39 30%		Fat +.005 .26		

- BW 74 lbs., WW 896 lbs., WR 106, YW 1438 lbs., YR 103**
IMF 6.41, Ratio 155—the top IMF bull of the Schaff calf crop (out of approximately 300 bulls)! RE 15.2", Ratio 103, Rib Fat Ratio 85, Rump Fat Ratio 90
- ★ 3105 was our \$15,000 selection to enhance marbling and maternal qualities in the herd. Over 130 progeny in 6 herds have an average 111 IMF ratio and 101 Ribeye ratio. In our most recent fall crop, the top two IMF scanning females were sired by 3105. 3105 has an awesome disposition. Visitors to the farm enjoy petting the bull.
 - ★ 3105's dam has generated \$91,250 in progeny receipts on twelve progeny who have sold in past SAV sales for an average of \$7605 to cattlemen in nine states. Several replacement daughters have been retained in the SAV herd. She scanned a 5.91 IMF, ratio 132, and a 10.7" Ribeye, ratio 105.
 - ★ The third and fourth top-selling bulls in our 2008 auction were sired by 3105 and sold for \$6000 and \$5250. Son H&K All Around F32 is pictured on page 6.
 - ★ 3105's young daughters are proving to be exceptional females that have plenty of depth, rib, and milking ability. 3105 has lots of volume and capacity, and we see this in his daughters also.
 - ★ We name 3105 sons "New Intrigue" instead of "New Design" because we feel this new name characterizes them well.
 - ★ Use 3105 for superior marbling and carcass traits and high maternal qualities.

S V A Midland 4089

"Midland"

Reg. 14767732
Calved 1-24-04



Twin Valley Precision E161 #
BR MIDLAND #
BR Royal Lass 7036-19

Sitz Traveler 8180 #
THOMAS ERICA 8603 #
Thomas Erica 5053

G A R Precision 1680 #
W C C Blackcap C9
S A F Neutron #
S A F Royal Lass 7036 #
G D A R Traveler 71 #
Sitz Everelda Entense 1137
Emulation N Bar 5522 #
Thomas Erica 3353

\$W	+21.24
\$F	+25.10
\$G	+14.62
\$B	+23.75

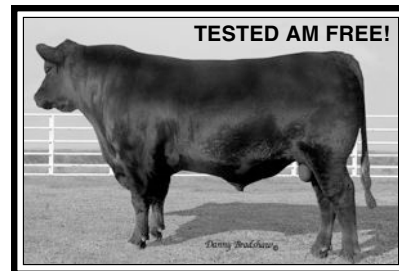
BW	WW	Milk	YW	SCR.	CED	CEM	HP	
+1.4	+40	+13	+82	+.49	+9	+9	+11	(EPD)
.68	.56	.25	.48	.42	.48	.23	.44	(ACC)
		30%			15%	15%	10%	(%)
Carcass CW +0 .21		MB +.16 .26		RE -.03 .34		Fat +.025 .24		

- BW 68 lbs., WW 713 lbs., WR 114, YW 1379 lbs., YR 111, IMF 3.49, RE 15.3"**
- ★ Midland 4089 was the lead off bull in a pen of 3 bulls exhibited in Denver by Sank Valley Angus. The pen stood third in its class of six. The Midland calves will surprise you with their exceptional length of body and good scrotal size.
 - ★ Midland daughters are more moderate framed, and would make excellent choices for raising club calves.
 - ★ Sire BR Midland has been one of the top selling semen bulls the last few years in the Angus breed. Over 5000 calves have an average IMF ratio of 108 and ribeye ratio of 101. BR Midland is the \$202,000 top selling bull in the history of the Montana Performance testing program.
 - ★ Use Midland for length, more moderate mature size, and calving ease.

TC Friction 5130

"Friction"

Reg. 15169496
Calved 2-19-05



Connealy Forefront #
TC FRICTION 3275
TC Pride 8067 #

Bon View New Design 878 #
TC BARBARA 3022
TC Barbara 1017

Connealy Frontline #
Eileen Heartland Cononga6443
TC Dividend 963 #
TC Pride 6093
B/R New Design 036 #
Bon View Gammer 85
Sitz Alliance 6595 #
TC Barbara 9160

\$W	+34.42	1%
\$F	+45.00	3%
\$G	+11.74	
\$B	+41.53	

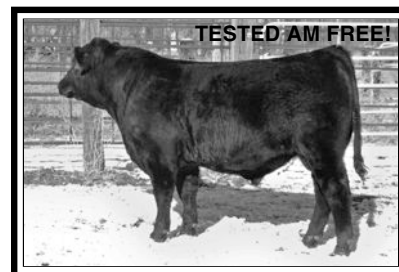
BW	WW	Milk	YW	SCR.	CED	CEM	HP	
+.4	+67	+25	+112	+.84	+10	+11		(EPD)
.68	.55	.14	.43	.51	.45	.13		(ACC)
	15%	1%	20%	2%	15%	10%	3%	(%)
Carcass CW +19 .14 15%		MB +.20 .21		RE +.15 .27		Fat +.046 .17		

- BW 72 lbs., WW 770 lbs., WR 112, YW 1415 lbs., YR 107**
IMF 4.37, Ratio 102, Ribeye 14.3", Ratio 105
- ★ *At catalog press time, Accelerated Genetics has offered to lease TC Friction 5130.*
 - ★ Friction is now the biggest Hoover "spread" bull. With a far below breed average BW EPD to a WW EPD top 1% of the breed, Friction is an ideal choice for those who want a bull to use on heifers without sacrificing pounds at weaning.
 - ★ In the recent fall calf crop, four of the top five weaning weight bull calves were sired by Friction, including the #1 WW bull ever at Hoover Angus at 921 pounds! The top two adjusted yearling weight bulls (among the older bulls) of this auction are sired by Friction. Featured Friction progeny sell as lots 60, 63, 74, 79, 84, and 110. A \$4000 feature son was purchased in our 2008 auction by Dr. Palmer.
 - ★ We used Friction heavily on heifers; many of which sell today. Friction calves have added length, frame, and easy fleshing ability. Friction was purchased as a calving ease bull for \$10,500 in 2006 from TC Ranch.
 - ★ TC Friction 3275 (the sire of Friction 5130) is a full brother to TC Foreman 016, and a maternal brother to TC Grid Topper 355.
 - ★ Use Friction for calving ease, weaning growth, and added frame.

ALC Titanic V13T

"Titanic"

Reg. 15897537
Calved 1-30-07



Connealy Timeline #
CONNEALY DANNY BOY
Ennery of Cononga 4851

Rito 112 of 2536 Rito 616
ALC RACHEL I12R
ALC Rachel N22N

Connealy Dateline #
Enchants Fortune Cononga6127 #
Hoff Heartland S C 456 #
Dividends Envy of Cononga #
Rito 616 of 4B20 6807 #
G A R Precision 2536
B/R New Frontier 095 #
Alc Rachel R08H

\$W	+33.18	1%
\$F	+45.89	1%
\$G	+20.28	
\$B	+51.96	10%

BW	WW	Milk	YW	SCR.	CED	CEM	HP	
+.9	+70	+15	+114	+.17	+7	+8		(EPD)
.36	.26	.20	.26	.31	.29	.17		(ACC)
	20%	1%	1%		30%	25%		(%)
Carcass CW +22 .13 5%		MB +.26 .19		RE +.29 .22 20%		Fat +.012 .16		

- BW 80 lbs., WW 900 lbs., WR 123, YW 1450 lbs., YR 111**
IMF 3.63, Ratio 84, Ribeye 15.8", Ratio 106
- ★ *Titanic's +70 WW EPD is the 12th highest WW EPD of all non-parent Angus bulls!*
 - ★ Titanic was the second top-selling and lead-off yearling bull at \$10,250 in the February 2008 Assman Land & Cattle sale. He was the #1 WW bull in the offering, weaning at 900 pounds to ratio 123! We are excited about his excellent genetic package and outcross pedigree he brings to our operation.
 - ★ Titanic froze semen his first day at Hawkeye Breeders.
 - ★ Titanic's dam was a first calf heifer stemming from a line of high milking cows. 112 is becoming known for his high quality females—good udders, feminine, and good dispositions.
 - ★ Sire Connealy Danny Boy was the \$23,000 high selling bull in the 2003 Connealy Angus Sale in Nebraska featured at Vermilion Ranch, MT. He is one of the top spread bulls in the breed whose progeny have tremendous shape, muscle, and eye appeal.
 - ★ Females sell bred to Titanic.
 - ★ Use Titanic for superior growth and moderate birth weight.



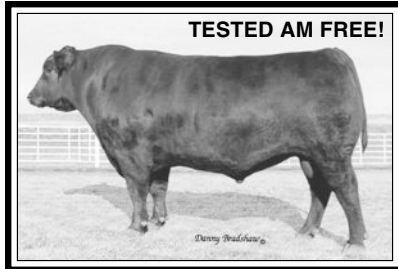
REFERENCE SIRES



**Woodhill
Statesman
54K-90N**

"Statesman"

Reg. 14502282
Calved 3-10-03



O C C Great Plains 943G #
SITZ GREATPLAINS 9520
Sitz Pride 3038

Connealy Frontline #
WOODHILL LUCY 666-54K
V D A R Lucy 666

N Bar Emulation EXT #	\$W	+38.27	1%
Dixie Erica of C H 1019	\$F	+22.96	
Sitz Traveler 9929 #	\$G	+23.19	
Sitz Pride 368	\$B	+29.76	
Connealy Dateline #			
Pleasant Pill of Conanga #			
V D A R New Trend 315 #			
V D A R Lucy 917			

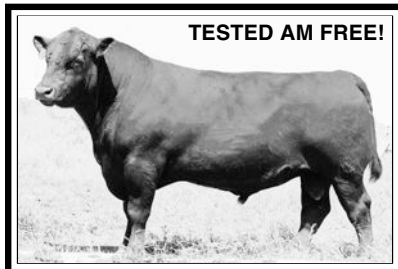
BW	WW	Milk	YW	SCR.	CED	CEM	HP	
-1	+56	+27	+86	+82	+10	+9	+11	(EPD)
.81	.73	.36	.64	.63	.59	.29	.57	(ACC)
10%	10%	10%	30%	20%	10%	15%	10%	(%)
Carcass	CW -2 .18	MB +.40 .27 25%	RE +.19 .36 30%	Fat +.056 .22				

- BW 84 lbs., WW 725 lbs., WR 106, YW 1242 lbs., YR 99, IMF 4.67, ratio 104, Ribeye 16.3", ratio 107**
- ★ Statesman exemplifies the traits combined in the \$Weaned Calf Value Index (\$W) placing him well above the top 1% of the Angus breed. **Statesman has the 49th high \$W index in the entire Angus breed for this economically important index!**
 - ★ Statesman sons were the most sought-after bulls during our private treaty sales this past summer. He combines low birth weight, high weaning weight growth, and marbling all in one package. Statesman calves are shorter gestation cattle, aiding in lower birth weights and calving ease. When bred to mature cows, Statesman progeny came an average 5.07 days early.
 - ★ A Statesman son has the 69th high \$W index of all non-parent Angus bulls. This bull sold as a feature in our 2008 auction for \$4250 to Bill Archer. A Statesman daughter, dam of lot 61, has the 12th highest WW EPD of any Angus cow in the breed!
 - ★ Over 200 progeny in 7 herds have an average 97 BWR, 101 WR, 101 YR, 105 IMF ratio and 99 Ribeye ratio (against some very high ribeye genetics in the Hoover herd). Even more encouraging is the strengths of his daughters with an average 106 WR on their progeny!
 - ★ Statesman and his progeny are very easy fleshing. He is moderate framed, but adds meat and muscle. He is a structurally sound bull with a large scrotal.
 - ★ In the fall 2005 calf crop, Statesman sired the top 4 weaning weight heifer calves all breaking the 700 pound mark; one was over 800 lbs!
 - ★ Use Statesman for low birth weight, thickness, and high marbling.

**LaGrand 338
Right Time
3404**

"Right Time"

Reg. 14396668
Calved 1-15-03



Leachman Right Time #
HYLINE RIGHT TIME 338 #
Hyline Pride 265

Connealy Kincaid #
ANDORA GAMMER 9023
Andora Gammer 7043

N Bar Emulation EXT #	\$W	+30.83	5%
Leachman Erica 0025	\$F	+28.77	25%
Hyline S V F Traveler 0115	\$G	+18.56	
Hyline Pride 870	\$B	+33.49	
Tehama Bando 155 #			
Connealy 6807 647 #			
O S U 6807 Traveler 4145			
Andora Gammer 511			

BW	WW	Milk	YW	SCR.	CED	CEM	HP	
+2.1	+51	+27	+90	+49	+6	+5	+7	(EPD)
.73	.62	.32	.56	.54	.54	.29	.51	(ACC)
	15%	10%	25%					(%)
Carcass	CW +5 .16	MB +.31 .24	RE -.37 .33	Fat -.007 .20 25%				

- BW 86 lbs., WW 812 lbs., WR 110, YW 1342 lbs., YR 106, IMF 5.14, Ratio 122, RE 12.9", Ratio 102**
- ★ Right Time is the \$15,000 curve bender who has been used on a significant number of heifers at Hoover Angus. Right Time progeny have good growth and have been a good cross on Neutron and Gridiron daughters. They bring higher marbling with an average 103 IMF ratio. Right Time's daughters in production average 105 WR on their progeny.
 - ★ In our 2008 auction, six Right Time sons averaged \$3767, nearly \$1000 above sale average.
 - ★ Hyline Right Time has been a breed influence and his \$Weaned Calf Value ranks 38th highest in the breed.
 - ★ Use Right Time for moderate birth weight, good growth, and an economical mature size.

**SA Nobleman
495**

"495"

Reg. 15147629
Calved 1-23-05



B/R New Frontier 095 #
ALC NOBLEMAN N01N
ALC LYN T03L

Bon View New Design 878 #
S A PLEASANT MARY 62 #
Pleasant Mary S A 569

B/R New Design 036 #	\$W	+14.92	
White Fence Pride H1	\$F	+50.54	1%
Connealy Leadtime #	\$G	+19.89	
Alc Janice F17J	\$B	+55.44	5%
B/R New Design 036 #			
Bon View Gammer 85			
Paramount of Wetonka 165 Se			
Pleasant Mary 1673			

BW	WW	Milk	YW	SCR.	CED	CEM	HP	
+7.5	+64	+18	+116	+45	-5	+7		(EPD)
.67	.54	.16	.47	.52	.42	.12		(ACC)
	2%		1%					(%)
Carcass	CW +27 .14 2%	MB +.29 .22	RE +.21 .29 30%	Fat +.007 .18				

- BW 84 lbs., WW 795 lbs., WR 116, YW 1501 lbs., YR 116, IMF 3.55, Ratio 82, Ribeye 15.9", Ratio 111**
- ★ SA Nobleman 495 was purchased to follow in the footsteps of 377. The \$20,000 495 has more frame, length, and thickness along with a good size scrotal. He moves well and is an aggressive breeder. He settles females in the early part of the breeding season. In all of the Hoover family's herd bull searching in 2006, this was the best bull to be found with our strict criteria.
 - ★ Nobleman calves come bigger at birth, but can't be beat for growth. His sons are an excellent choice for cattlemen looking to add growth to their calf crop when breeding mature cows. In the spring 2007 calf crop, 6 of the top 15 bull and heifer calves were sired by 495.
 - ★ The top adjusted yearling weight and top ribeye scanning spring bred heifer in this auction is sired by 495. She sells as lot 125.
 - ★ 495's dam works in the performance-oriented Slagle Angus herd with 5-92 BWR, 5-101 WR, 4-101 YR, and 4-102 ribeye ratio. All three of her daughters have been retained as replacements at Slagle Angus. Her only daughter old enough to have a record has 3-107 WR and 2-108 YR. Mark reports the cow still looks really good and is sound.
 - ★ Sire ALC Nobleman is featured at ORIgen.
 - ★ Use Nobleman for high growth, phenotypic appeal, and larger frame.

**S A Neutron 377
"377"**

Reg. 12760345
Calved 1-12-97



"377" at 9 1/2 years of age



V D A R New Trend 315 #
S A F NEUTRON #
S A F Duchess 9029

S A F Power Fix #
S A QUEEN SUSAN 102 #
S A Queen Susan 910

A A R New Trend #	\$W	+26.15	30%
V D A R Lucy 704 #	\$F	+56.02	1%
Traveler 1148 G D A R #	\$G	+13.45	
Fairdales Duchess 247 #	\$B	+53.40	10%
Brost Power Drive #			
Pride Queen T 4155			
ONEills Renovator #			
Queen Susan 90			

BW	WW	Milk	YW	SCR.	CED	CEM	HP	
+4.5	+64	+12	+121	+1.30	+0	+8	+5	(EPD)
.96	.94	.90	.93	.91	.81	.83	.75	(ACC)
	2%		1%	4%		30%		(%)
Carcass	CW +35 .62 1%	MB +.16 .67	RE +.50 .66 3%	Fat +.036 .61				

- ★ 377 has the 23rd high YW EPD of all current sires and the #88 high \$Feedlot Value! Numerous sons and grandsons produced at Hoover Angus rank above him for WW EPD, YW EPD, \$F and Ribeye EPD.
- ★ 377 has over 5000 progeny in 600 herds with an average 102 WR. Progeny average 103 YR, 102 scrotal ratio, 103 ribeye ratio, and over 1500 daughters average 100 WR on their progeny. Let the data speak for itself!
- ★ If you are looking for growth and pounds at weaning time, turn to 377. He will certainly add frame and growth. His daughters have frame and size, and for the past several years, 377 daughters have produced the lead-off bulls in our production sale. In 2008, 377 daughters produced the two co-top selling bulls at \$10,000.
- ★ 377 daughters and granddaughters are among the best of the breed. See page 33 to see where these females rank.
- ★ For four out of the past five years, a 377 daughter has raised the top weaning weight bull calf of the spring crop, among 150+ bulls each year!



REFERENCE SIRES

